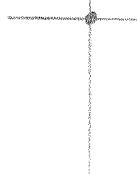


LATITUDE 39 32 30

LONGITUDE 80 12 30



2.81S
2.11W

7'5 OGIS topo location

| | |
|----------------|----------------------|
| 7.5' loc _____ | 15' loc <u>569S</u> |
| _____ | (calc.) <u>4.33W</u> |

Company _____ (5038)

Farm RUFUS DOWNS 1

Blacksville SW

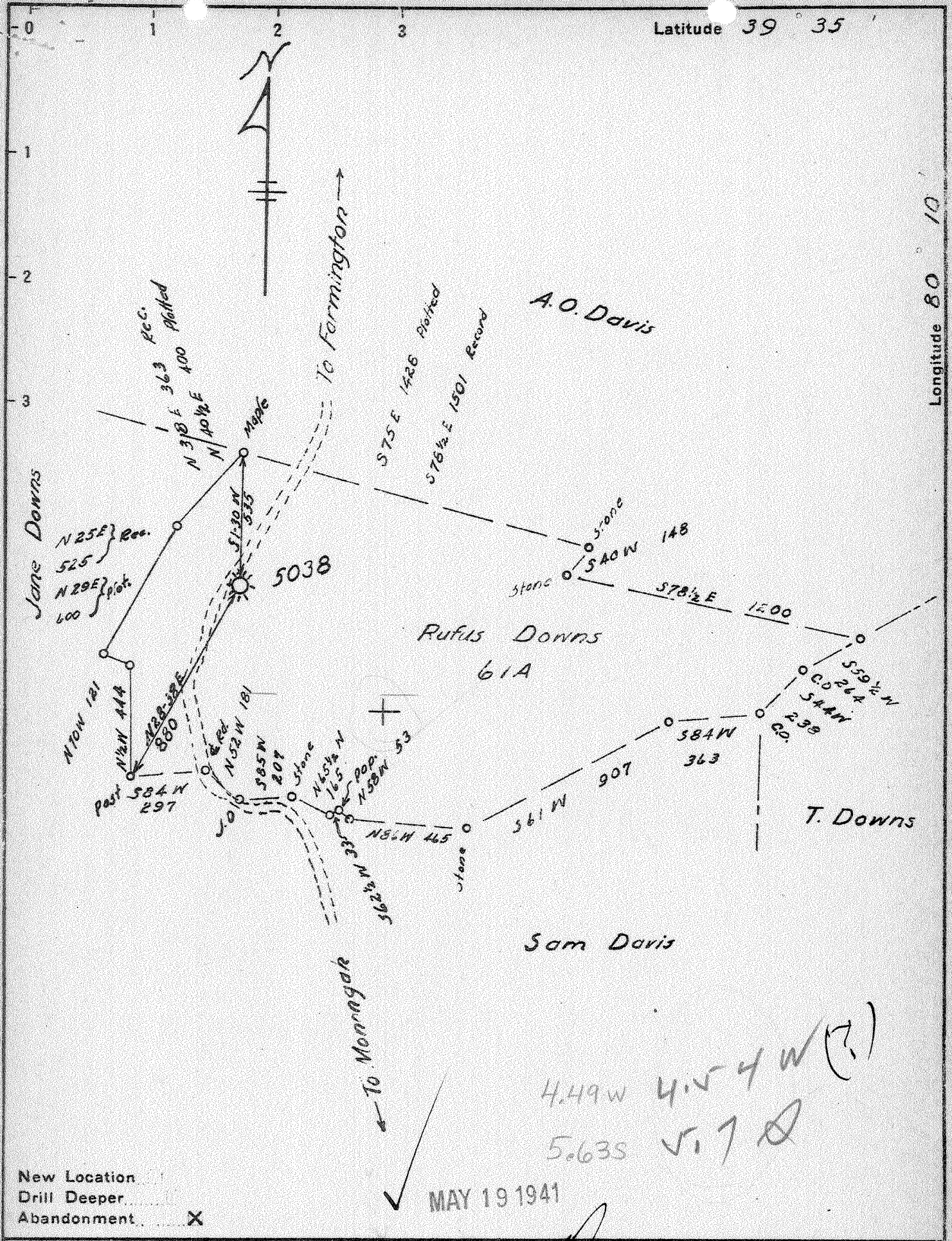
Quad GRANT TOWN

County MARION

District LINCOLN

WELL LOCATION MAP

File No. 30304



New Location
 Drill Deeper
 Abandonment

MAY 19 1941

Company Pittsburgh & West Virginia Gas Co.
 Address Clarksburg, W. VA.
 Farm Rufus Downs
 Tract _____ Acres 61 Lease No. 6508
 Well (Farm) No. 1 Serial No. 5038
 Elevation (Spirit Level) 1340' VA.
 Quadrangle Blacksville S.W. 32
 County Marion District Lincoln
 Engineer Paul W. Cunningham
 Engineer's Registration No. _____
 File No. V97 P47 Drawing No. _____
 Date May 12, 1941 Scale 1" = 500'

STATE OF WEST VIRGINIA
 DEPARTMENT OF MINES
 OIL AND GAS DIVISION
 CHARLESTON

WELL LOCATION MAP
 FILE NO. MAR-304A

+ Denotes location of well on United States Topographic Maps, scale 1 to 62,500, latitude and longitude lines being represented by border lines as shown.
 - Denotes one inch spaces on border line of original tracing.

STATE OF WEST VIRGINIA
DEPARTMENT OF MINES
OIL AND GAS DIVISION

386

WELL RECORD

Permit No. 304-A

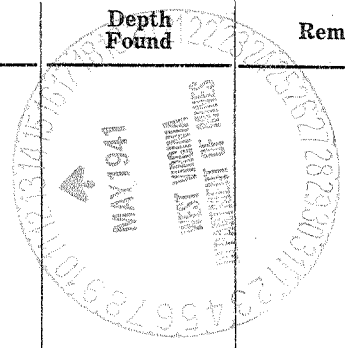
Oil or Gas Well Gas
(KIND)

Company Pittsburgh & West Va. Gas Company.
Address Clarksburg, West Va.,
Farm Rufus Downs Acres 62
Location (waters) Blk. 8 1/2. 3-3
Well No. 3038 Elev. 1340 1/2
District Lincoln County Marion
The surface of tract is owned in fee by Carlo Thomas
Address Farmington, W. Va.,
Mineral rights are owned by Walter G. & U. A. Fleming
Address Farmington, West Va.
Drilling commenced January 14, 1913
Drilling completed February 14, 1913
Date shot 8-11-1913 Depth of shot 5th. Sand
Open Flow /10ths Water in _____ Inch
/10ths Merc. in _____ Inch
Volume _____ Cu. Ft.
Rock Pressure _____ lbs. _____ hrs.
Oil _____ bbls., 1st 24 hrs.
Fresh water _____ feet _____ feet
Salt water _____ feet _____ feet

| Casing and Tubing | Used in Drilling | Left in Well | Packers |
|--------------------|------------------|--------------|----------------|
| Size | | | |
| 16 | | | Kind of Packer |
| 13 | | | |
| 10 <u>Cemented</u> | <u>695'</u> | <u>695'</u> | Size of |
| 8 1/4 | <u>1455'</u> | <u>1455'</u> | |
| 6 3/8 | <u>1951'</u> | <u>1951'</u> | Depth set |
| 5 3/16 | <u>2078'</u> | <u>144'</u> | |
| 3 | | <u>309'</u> | Perf. top |
| 2 | | | Perf. bottom |
| Liners Used | | | Perf. top |
| | | | Perf. bottom |

CASING CEMENTED _____ SIZE _____ No. Ft. _____ Date _____
COAL WAS ENCOUNTERED AT 90 FEET 24 INCHES
290 FEET 38 INCHES 335 FEET 80 INCHES
630 FEET 96 INCHES _____ FEET _____ INCHES

| Formation | Color | Hard or Soft | Top | Bottom | Oil, Gas or Water | Depth Found | Remarks |
|------------------|--------|--------------|------|--------|-------------------|-------------|---------|
| Earth | Yellow | Soft | 0 | 14 | | | |
| Slate/Shell | Dark | Hard/Soft | 14 | 64 | | | |
| Sand | " | " | 64 | 90 | | | |
| Coal | | | 90 | 92 | | | |
| Slate/Shell | Dark | Hard/Soft | 92 | 185 | | | |
| Sand | White | Hard | 185 | 250 | | | |
| Fairview Coal | Black | Soft | 250 | 253 | | | |
| Slate/Shell | Dark | Soft/Hard | 253 | 293 | | | |
| Lime | White | Hard | 293 | 335 | | | |
| M.T. Coal | Black | Soft | 335 | 340 | | | |
| Lime/Slate | Dark | Hard/Soft | 340 | 650 | | | |
| Fgh. Coal | Black | Soft | 650 | 658 | | | |
| Slate/Shell | " | Soft/Hard | 658 | 790 | | | |
| Red Rock | Red | Soft | 790 | 1000 | | | |
| Slate | White | " | 1000 | 1015 | | | |
| L. Dunkard | " | Hard | 1015 | 1020 | | | |
| Slate/Shell | Dark | Soft/Hard | 1020 | 1045 | | | |
| Red Rock/Shell | Red | " | 1045 | 1075 | | | |
| L. Dunkard | White | Hard | 1075 | 1105 | | | |
| Slate/Shell | Dark | Soft/Hard | 1105 | 1163 | | | |
| Big Dunkard | White | Hard | 1163 | 1238 | | | |
| Slate/Shell | Dark | Soft/Hard | 1238 | 1380 | | | |
| Gas Sand | White | Hard | 1380 | 1418 | Water | 1400' | |
| Slate | Black | Soft | 1418 | 1455 | | | |
| 1st. Salt Sand | White | " | 1455 | 1525 | | | |
| Slate/Shell | Dark | Soft/Hard | 1525 | 1560 | | | |
| 2nd. Salt Sand | " | Hard | 1560 | 1673 | | | |
| Slate | Black | Soft | 1673 | 1722 | | | |
| Lime | White | Hard | 1722 | 1770 | | | |
| Red Rock | Red | Soft | 1770 | 1850 | | | |
| Slate/Shell | Dark | Hard/Soft | 1850 | 1920 | | | |
| Little Lime | Light | Hard | 1920 | 1934 | | | |
| Slate | " | Soft | 1934 | 1940 | | | |
| Big Lime | " | Hard | 1940 | 1996 | | | |
| Big Injun | White | " | 1996 | 2145 | Gas | 2019' | |
| Slate/Shell | Light | " | 2145 | 2510 | | | |
| Fifty Foot Sand | " | " | 2510 | 2540 | | | |
| Slate | Dark | Soft | 2540 | 2563 | | | |
| Thirty Foot Sand | Light | Hard | 2563 | 2623 | | | |
| Slate/Shell | Light | Soft | 2623 | 2644 | | | |
| Red Rock | Red | Soft/Hard | 2644 | 2846 | | | |



| Formation | Color | Hard or Soft | Top | Bottom | Oil, Gas or Water | Depth Found | Remarks |
|--|-------|--------------|------|--------|-------------------|-------------|---------|
| Garden Stray | Light | Hard | 2886 | 2897 | | | |
| Slate | Dark | Soft | 2897 | 2863 | | | |
| Garden Sand | Light | Hard | 2863 | 2901 | | | |
| Slate | " | Soft | 2901 | 2950 | | | |
| 4th. Sand | " | Hard | 2950 | 2960 | | | |
| Slate | " | Soft | 2960 | 3011 | | | |
| 5th. Sand | Dark | Hard | 3011 | 3048 | Gas | 3012' | |
| Slate | Light | Soft | 3048 | 3073 | | | |
| Total Depth | | | | 3073' | | | |
| <p><u>Remarks</u></p> <p>Well cleaned out to 2738 feet. 144 feet 5-3/16" casing left in hole. 369 feet 3" tubing left in hole. Unable to fish the above material out of hole.</p> | | | | | | | |

May 9th, 1911.

Date....., 1911.

PITTSBURGH & WESTVA GAS COMPANY.

APPROVED....., Owner

By.....

(Title)

Record of Well No. 5038 Located on Refugio Downs Farm Oct 1 1913
Lucas District Marion County West Va State
 Division N District No. 11 Drilled under well Order 544
 " Keiper under " 189
 Rig built by John Craig Began Jan 2 1913 Completed Jan 5 1913
Drilling Company W. Harbun Began July 24 1915 Completed Aug 12 1915
 Well drilled by S.W. McCall Began Jan 14 1913 Completed Feb 14 1913
 Depth of Well 2029 feet Size of Hole 6 5/8 Producing Gas
3073 5 3/16 Gas Elev. 1340 G

| CASED WITH | | | REMARKS |
|------------|---------|--------|--|
| AMOUNT | SIZE | KIND | L.D. 405-16,031 Rig reclaimed Aug 13-1913. 10" casing to be cemented through the Cgl. Coal |
| 16' | 13" | wood | |
| 690' | 10" | new | |
| 1455' | 8 1/2" | " | |
| 1951' | 6 5/8" | " | |
| 2030' | 4" | Tubing | |
| 2878' | 5 3/16" | " | |
| 2618' | 3" | Tubing | |

COAL VEINS Maple tower ⁵³⁵ 540 ⁶⁵⁰ 657

| FORMATIONS | | | | | |
|--------------------------|-------|----------------------------|------|--------|--|
| FORMATION | COLOR | OPEN OR CLOSE HARD OR SOFT | TOP | BOTTOM | REMARKS GAS-OIL-WATER (THICKNESS OF PAY) |
| <u>Little Dunbar</u> | | | 1070 | 1090 | |
| <u>Big "</u> | | | 1163 | 1235 | |
| <u>Gas sand</u> | | | 1380 | 1418 | <u>Water 1390-1418</u> |
| <u>at last sand</u> | | | 1560 | 1673 | |
| <u>and "</u> | | | 1940 | 1996 | |
| <u>Big Limestone</u> | | | 2015 | | <u>Gas 2019</u> |
| <u>Big Limestone</u> | | | | | |
| <u>Atal Dept</u> | | | 2029 | | <u>Steel line measurement</u> |
| <u>Drilling Company</u> | | | | | |
| <u>Big Limestone</u> | | | | 2145 | |
| <u>Atal Dept sand</u> | | | 2570 | 2570 | |
| <u>Thirty Foot "</u> | | | 2563 | 2623 | |
| <u>London Stray</u> | | | 2846 | 2857 | |
| <u>Gas sand</u> | | | 2863 | 2901 | |
| <u>Worst "</u> | | | 2950 | 2960 | |
| <u>Refect "</u> | | | 3011 | 3048 | <u>Gas 3012 to 3016. 1.2 1/2" of gas about</u> |
| <u>Atal Dept (slate)</u> | | | | 3073 | <u>108960 cft</u> |
| | | | 3073 | | <u>Left in hole 9 ft. 1044 ft. 5 3/16</u> |
| | | | 2029 | | <u>and 18 ft. 369 ft. of 5" tubing and</u> |
| | | | 1044 | | <u>slips out of socket on top of pipe</u> |
| | | | | | <u>could not pick out</u> |

(164) Farmington

FORMATIONS
FORM: C 32-5170

Well # 5038 *Jeffers Quarry*

| NAME | TOP | BOTTOM | OIL | GAS | WATER | REMARKS |
|-------------------------|------|--------|-----|------|-------|----------------------|
| Clay | | 14 | | | | |
| Slate & Shells | 14 | 64 | | | | |
| Sand | 64 | 90 | | | | |
| Medium Coal | 90 | 92 | | | | |
| Slate & Shells | 92 | 185 | | | | |
| Sand | 185 | 250 | | | | |
| Warren Coal | 250 | 253 | | | | |
| Slate & Shell | 253 | 293 | | | | |
| Lime | 293 | 535 | | | | |
| Maplewood Coal | 535 | 540 | | | | |
| Lime & slate | 540 | 650 | | | | |
| Cl. Coal | 650 | 658 | | | | |
| Slate & Shell | 658 | 790 | | | | |
| Red Rock | 790 | 1000 | | | | |
| Slate | 1000 | 1015 | | | | |
| Sand | 1015 | 1020 | | | | |
| Slate & Shell | 1020 | 1045 | | | | |
| Red Rock & Shell | 1045 | 1075 | | | | |
| Soft Dumbard | 1075 | 1105 | | | | |
| Slate & Shell | 1105 | 1163 | | | | |
| Big Dumbard | 1163 | 1238 | | | | |
| Slate & Shell | 1238 | 1380 | | | | |
| Sand | 1380 | 1418 | | | 1400 | |
| Slate | 1418 | 1455 | | | | |
| Med. Red Sand | 1455 | 1525 | | | | |
| Slate & Shells | 1525 | 1560 | | | | |
| Med. Red Sand | 1560 | 1673 | | | | |
| Slate | 1673 | 1722 | | | | |
| Lime | 1722 | 1770 | | | | |
| Red Slate | 1770 | 1860 | | | | |
| Slate & Shell | 1860 | 1920 | | | | |
| Little Lime | 1920 | 1934 | | | | |
| Slate & Coal | 1934 | 1940 | | | | |
| Big Lime | 1940 | 1996 | | | | |
| Sand | 1996 | 2019 | | 2019 | | Top Big Dumbard 2015 |
| Total Depth | 2029 | | | | | |
| Open drilling suspected | | 2029 | | | | |
| Big Quarry | | 2145 | | | | End Big Quarry |
| Slate & Shell | 2145 | 2570 | | | | |
| Wedge Foot | 2570 | 2570 | | | | |
| Slate | 2570 | 2583 | | | | |
| Wedge Foot | 2583 | 2623 | | | | |
| Slate & Shells | 2623 | 2644 | | | | |
| Red Rock | 2644 | 2846 | | | | |
| Shale | 2846 | 2809 | | | | |
| Slate | 2809 | 2863 | | | | |
| Shale | 2863 | 2901 | | | | Red Rock at 2885 |
| Slate | 2901 | 2900 | | | | |
| Wound Sand | 2900 | 2960 | | | | |
| Slate | 2960 | 3011 | | | | |
| Red Sand | 3011 | 3049 | | 3012 | | |
| Slate | 3049 | 3070 | | | | |
| Total Depth | | 3073 | | | | |