

Latitude

.115  
209w

Longitude

Topo Location

7.5' Loc. \_\_\_\_\_ 15' Loc. \_\_\_\_\_  
\_\_\_\_\_ (calc.) \_\_\_\_\_

Company \_\_\_\_\_

Farm \_\_\_\_\_

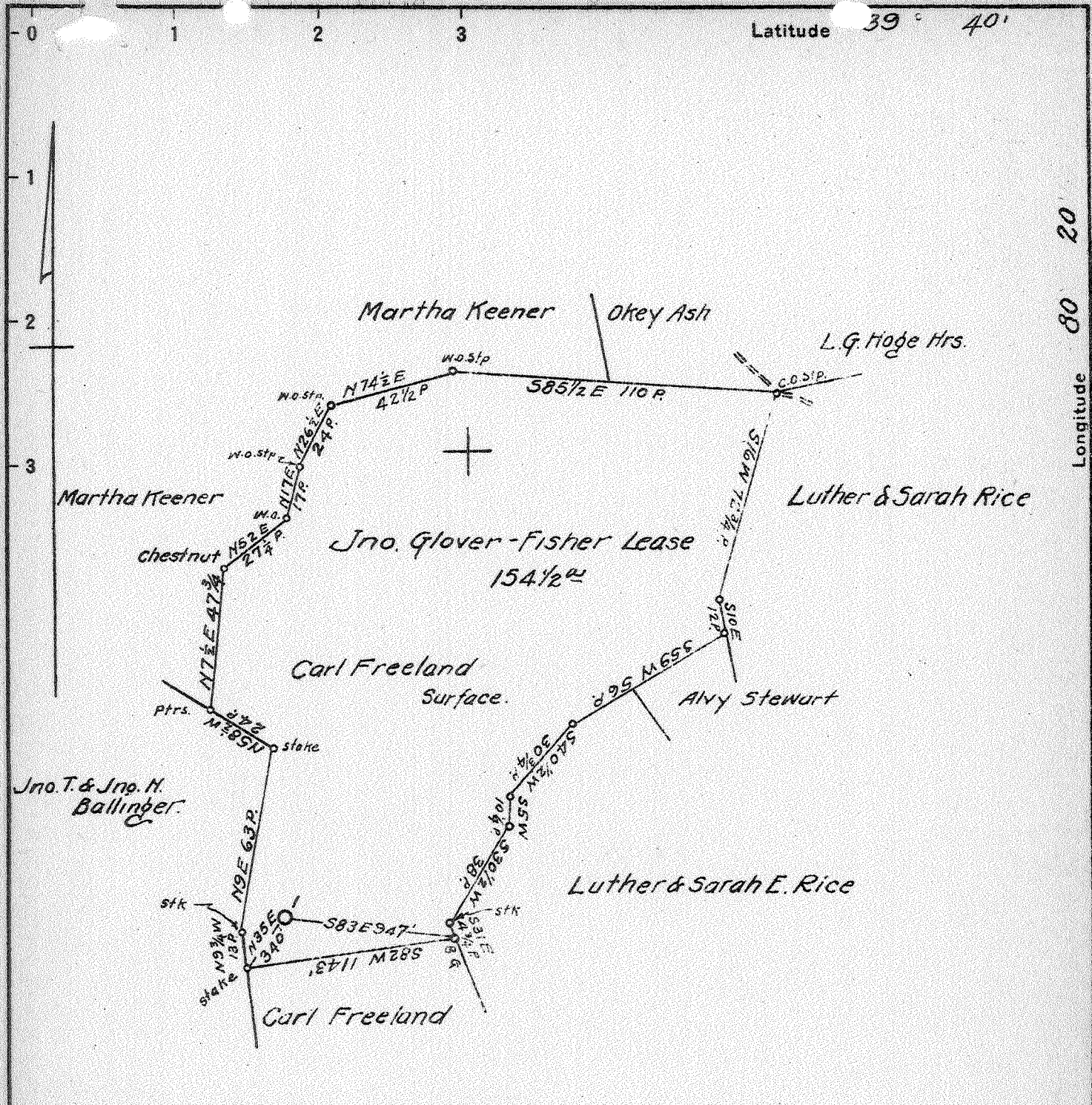
15' Quad \_\_\_\_\_  
(sec.)

7.5' Quad Glover Gap

District Mammonington

WELL LOCATION PLAT

County CHA Permit 30292



Coal: Union Trust Co of Pittsburgh, Trustee  
Pittsburgh, Pa.  
Surface: Carl Freeland  
Glovers Gap, W. Va.

4.37 W  
3.1 V Q  
4.31 W  
3.07 S

FEB 18 1941

New Location...   
Drill Deeper...   
Abandonment...

N 12 E 12 Map N 60 E

Company South Penn Natural Gas Co.  
 Address Parkersburg, W. Va.  
 Farm Jno. Glover - Fisher  
 Tract \_\_\_\_\_ Acres 150 Lease No. 72001  
 Well (Farm) No. 1 Serial No. \_\_\_\_\_  
 Elevation (Spirit Level) 1466.10  
 Quadrangle Mannington  
 County Marion District Mannington  
 Engineer E.C. Tabler  
 Engineer's Registration No. \_\_\_\_\_  
 File No. \_\_\_\_\_ Drawing No. \_\_\_\_\_  
 Date Jan 25, 1941 Scale 1" = 800'

STATE OF WEST VIRGINIA  
DEPARTMENT OF MINES  
OIL AND GAS DIVISION  
CHARLESTON

WELL LOCATION MAP  
FILE NO. MAR-292A

+ Denotes location of well on United States Topographic Maps, scale 1 to 62,500, latitude and longitude lines being represented by border lines as shown.  
 - Denotes one inch spaces on border line of original tracing.

Mannington District, Marion County, W. Va.

Fisher Oil Co.

Elevation, 1460' E.

1.1 mi. N. W. of Glover Gap.

Completed, Oct. 22, 1910.

Conductor, 16'; 10" casing, 416'; 8 $\frac{1}{2}$ ", 1767'; 6-5/8", 2695'.

Shot Dec. 29, 1910, with 20 qts. from 3312' to 3319'.

Well filled up half full of oil one hour after shot.

	Top.	Bottom.
Coal, Mapletown (Sewickley)	1185	- 1190
Coal, Pittsburgh	1280	- 1290
Big Lime	2510	- 2585
Big Injun Sand	2585	- 2755
50-Ft. Sand	3250	- 3275
30-Ft. Sand (oil), to bottom	3301	- 3320

STATE OF WEST VIRGINIA  
DEPARTMENT OF MINES  
OIL AND GAS DIVISION

378

WELL RECORD

Permit No. 292-A

Oil or Gas Well.....  
(KIND)

Company SOUTH PENN NATURAL GAS COMPANY  
Address Union Trust Bldg., Parkersburg, W. Va.  
Farm John Glover-Fisher Acres 150  
Location (waters) Big Run  
Well No. 1 Elev. 1466.10  
District Mannington County Marion  
The surface of tract is owned in fee by Carl Freeland  
Address Glovers Gap, W.Va.  
Mineral rights are owned by C. E. Freeland, et al.  
Address Glovers Gap, W.Va.  
Drilling commenced ?  
Drilling completed October 22, 1910  
Date shot 12-29-10 Depth of shot ?  
7-16-16  
Open Flow /10ths Water in -- Inch  
/10ths Merc. in -- Inch  
Volume -- Cu. Ft.  
Rock Pressure -- lbs. hrs.  
Oil -- bbls., 1st 24 hrs.  
Fresh water -- feet  
Salt water -- feet

Casing and Tubing	Used in Drilling	Left in Well	Packers
Size			
16			Kind of Packer.....
13			
10	408'		Size of.....
8 1/4	1765'		
6 3/4	2695'		Depth set <u>On Bottom</u>
5 3/16	2711'		<u>of 5 3/16" casing</u>
3			Perf. top.....
2			Perf. bottom.....
Liners Used			Perf. top.....
			Perf. bottom.....

CASING CEMENTED -- SIZE -- No. Ft. -- Date --  
COAL WAS ENCOUNTERED AT -1280 FEET 120 INCHES  
-- FEET -- INCHES -- FEET -- INCHES  
-- FEET -- INCHES -- FEET -- INCHES

Formation	Color	Hard or Soft	Top	Bottom	Oil, Gas or Water	Depth Found	Remarks
Pittsburgh Coal			1280	1290			
Big Dunkard			1755	1795			
Salt Sand			1885	2000			
Big Lime			2570	2585			
Big Injun			2585	2755			
Fifty Foot			3250	3275			
Thirty Foot			3301	3320			
TOTAL DEPTH				3320	Oil	3313	



