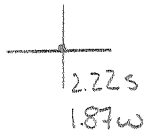


39°32'36"

Latitude

80°20'00"

Longitude



**Topo Location**

7.5' Loc. \_\_\_\_\_ 15' Loc. \_\_\_\_\_  
   (calc.) \_\_\_\_\_

Company \_\_\_\_\_

Farm \_\_\_\_\_

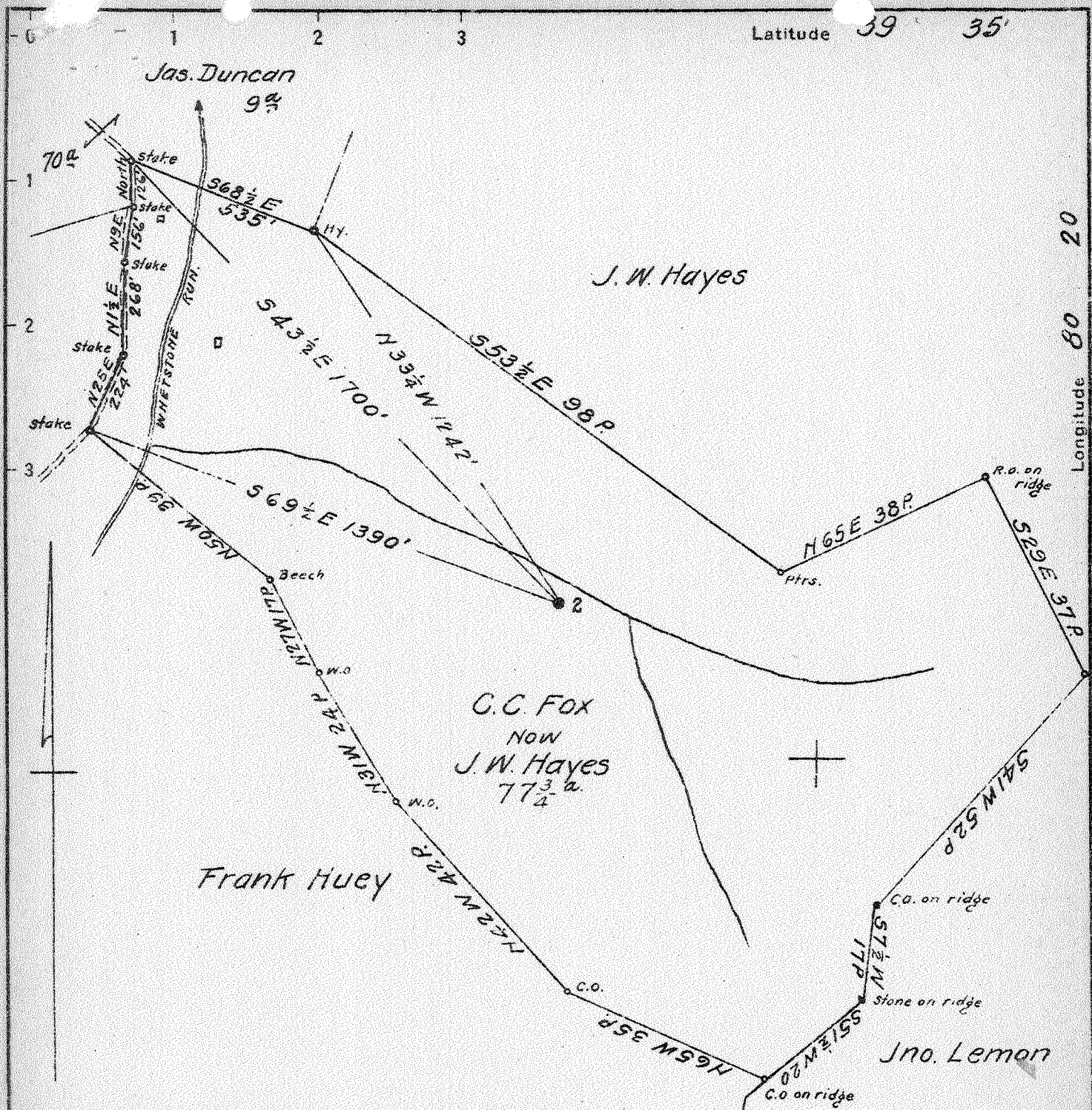
15' Quad \_\_\_\_\_  
(sec.)

7.5' Quad Mammington \_\_\_\_\_

District Mammington \_\_\_\_\_

**WELL LOCATION PLAT**

County 049 Permit 30290



Surface: J.W. Hayes  
R.F.D. #4

Mannington,  
W. Va.

Coal: Union Trust Co. of Pittsburgh, Trustee  
Pittsburgh, Pa.

1.91 W 1.90 W  
5.27 P 5.19 S

New Location  
Drill Deeper  
Abandonment

FEB 18 1941

N4 E 12 Map N50 E.

|                             |                              |
|-----------------------------|------------------------------|
| Company                     | South Penn Natural Gas Co.   |
| Address                     | Parkersburg, W. Va.          |
| Farm                        | C.C. Fox                     |
| Tract                       | Acres 77 3/4 Lease No. 11786 |
| Well (Farm) No.             | 2 Serial No.                 |
| Elevation (Spirit Level)    | 1098.52                      |
| Quadrangle                  | Mannington                   |
| County                      | Marion District Mannington   |
| Engineer                    | E.C. Tabler                  |
| Engineer's Registration No. |                              |
| File No.                    | Drawing No.                  |
| Date                        | Dec 27, 1940 Scale 1" = 400' |

STATE OF WEST VIRGINIA  
DEPARTMENT OF MINES  
OIL AND GAS DIVISION  
CHARLESTON

**WELL LOCATION MAP**  
FILE NO. **MAR-290A**

+ Denotes location of well on United States Topographic Maps, scale 1 to 62,500. latitude and longitude lines being represented by border lines as shown.

- Denotes one inch spaces on border line of original tracing

STATE OF WEST VIRGINIA  
DEPARTMENT OF MINES  
OIL AND GAS DIVISION

376

WELL RECORD

Permit No. 290-A

Oil or Gas Well OIL  
(KIND)

Company South Penn Natural Gas Company  
Address Union Trust Bldg. Parkersburg, W. Va.  
Farm C. C. Fox Acres 77 1/2  
Location (waters) Whetstone Run  
Well No. 2 Elev. 1098.52  
District Mannington County Marion  
The surface of tract is owned in fee by J. W. Hayes  
R.F.D. No. 4 Address Mannington, W. Va.  
Mineral rights are owned by South Penn Nat. Gas Co.  
Parkersburg, W. Va.  
Drilling commenced Oct. 24, 1893  
Drilling completed Jan. 4, 1894  
Date shot See Below Depth of shot --  
Open Flow /10ths Water in -- Inch  
/10ths Merc. in -- Inch  
Volume -- Cu. Ft.  
Rock Pressure -- lbs -- hrs.  
Oil 1318 bbls., 1st 24 hrs.  
Fresh water -- feet -- feet  
Salt water 1515 feet 1987 feet

| Casing and Tubing   | Used in Drilling | Left in Well | Packers        |
|---|------------------|--------------|----------------|
| Size  |                  |              |                |
| 16  |                  |              | Kind of Packer |
| 13  |                  |              |                |
| 10  | 322'             |              | Size of        |
| 8 1/4   | 1100' 8"         |              | Depth set      |
| 6 3/4   | 1860' 3"         |              |                |
| 5 3/16  | 2332' 6"         |              | Perf. top      |
| 3   |                  |              | Perf. bottom   |
| 2   |                  |              | Perf. top      |
| Liners Used   | 4" - 454'        |              | Perf. bottom   |
| CASING CEMENTED <u>--</u> SIZE <u>--</u> No. Ft. <u>--</u> Date <u>--</u> |                  |              |                |
| COAL WAS ENCOUNTERED AT <u>558</u> FEET <u>120</u> INCHES                 |                  |              |                |
| <u>--</u> FEET <u>--</u> INCHES <u>--</u> FEET <u>--</u> INCHES           |                  |              |                |
| <u>--</u> FEET <u>--</u> INCHES <u>--</u> FEET <u>--</u> INCHES           |                  |              |                |

| Formation       | Color | Hard or Soft | Top  | Bottom | Oil, Gas or Water | Depth Found | Remarks |
|-----------------|-------|--------------|------|--------|-------------------|-------------|---------|
| Pittsburgh Coal |       |              | 558  | 568    |                   |             |         |
| Dunkard Sand    |       |              | 1090 | 1130   |                   |             |         |
| Salt Sand       |       |              | 1350 | 1515   | Water             | 1515        |         |
| Pencil Cave     |       |              | 1815 | 1830   |                   |             |         |
| Big Lime        |       |              | 1830 | 1904   |                   |             |         |
| Big Injun Sand  |       |              | 1904 | 2050   | Oil & Water       | 1987        | (Show)  |
| Gantz Sand      |       |              | 2447 | 2458   | Gas               | 2447        |         |
| Slate           |       |              | 2458 | 2488   |                   |             |         |
| Fifty Foot Sand |       |              | 2488 | 2547   |                   |             |         |
| Gordon Sand     |       |              | 2757 |        | Oil               | 2532        |         |
|                 |       |              |      |        | 1st Pay           | 2764        |         |
|                 |       |              |      |        | 2nd Pay           | 2771        |         |
| Total Depth     |       |              |      | 2775   |                   |             |         |

SHOT RECORD.

June 4-1897 20 qt. Gordon  
Sept. 21-1898 45 qt. Gordon  
Oct. 26-1898 100 qt. Gordon  
Apr. 26-1900 100 qt. Gordon  
Mar. 6-1906 100 qt. Gordon  
Nov. 14-1918 10 qt. Big Injun

