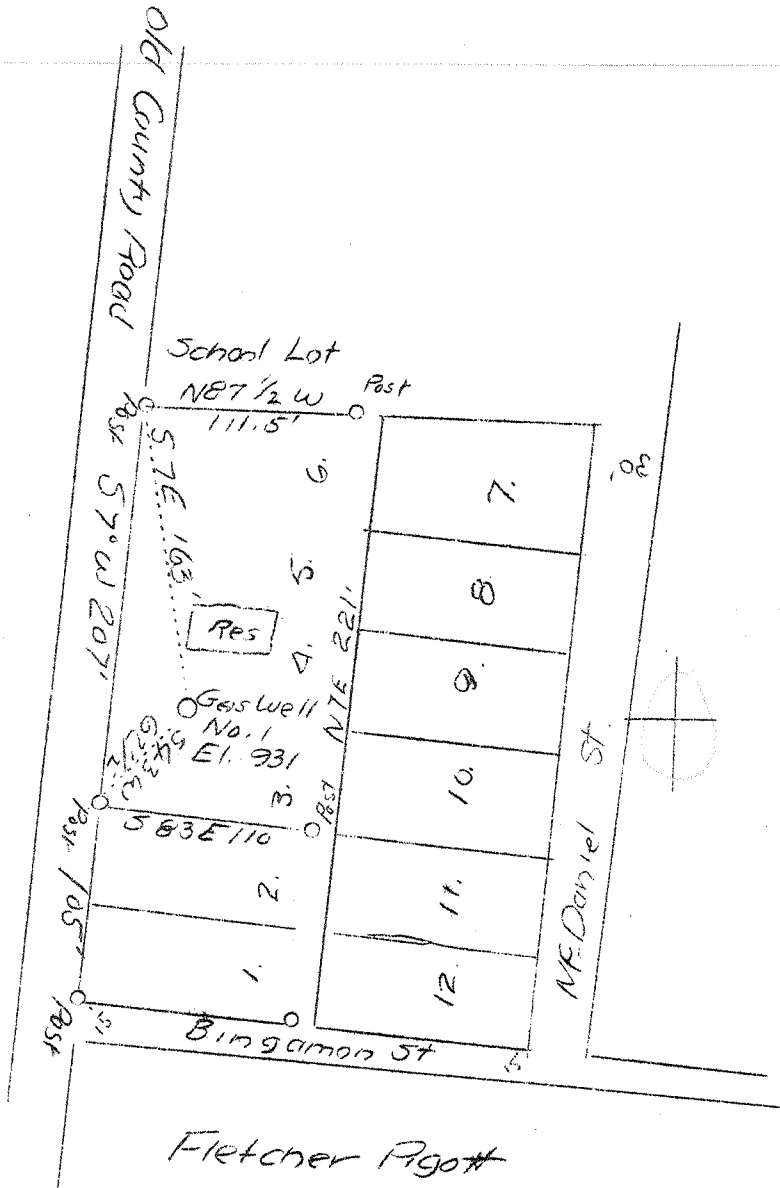


Latitude 39° 36'

Longitude 80° 15'



Fletcher Pigott

A section of Brisco
 D.B. 115, p. 337.
 Lots 3, 4, 5 and 6 owned
 by Minnie M Wyer

1.58W W - 1.6
 4.50S S. 4.53

Abu.

Company	F. G. Bish
Address	Clarksburg, W. Va.
Name	Minnie M. Wyer
Lots	3, 4, 5 & 6
Well (Farm) No.	1
Elevation (SL)	931
Quadrangle	Clarksburg NE
County	Marion
District	Lincoln
Engineer	C. C. Fittro, C. E.
Eng. Reg. No.	818
Map No.	XYZ
Date	Sept. 20, 1939
Scale	100' - 1"

STATE OF WEST VIRGINIA
 Department of Mines
 OIL & GAS DIVISION
 Charleston

WELL LOCATION MAP

File No. Map 233 A

x Denotes location of well on U. S. Topographic Maps, scale 1 to 62,500, latitude and longitude lines being represented by border lines as shown.

- Denotes one inch spaces on border line of original tracing.