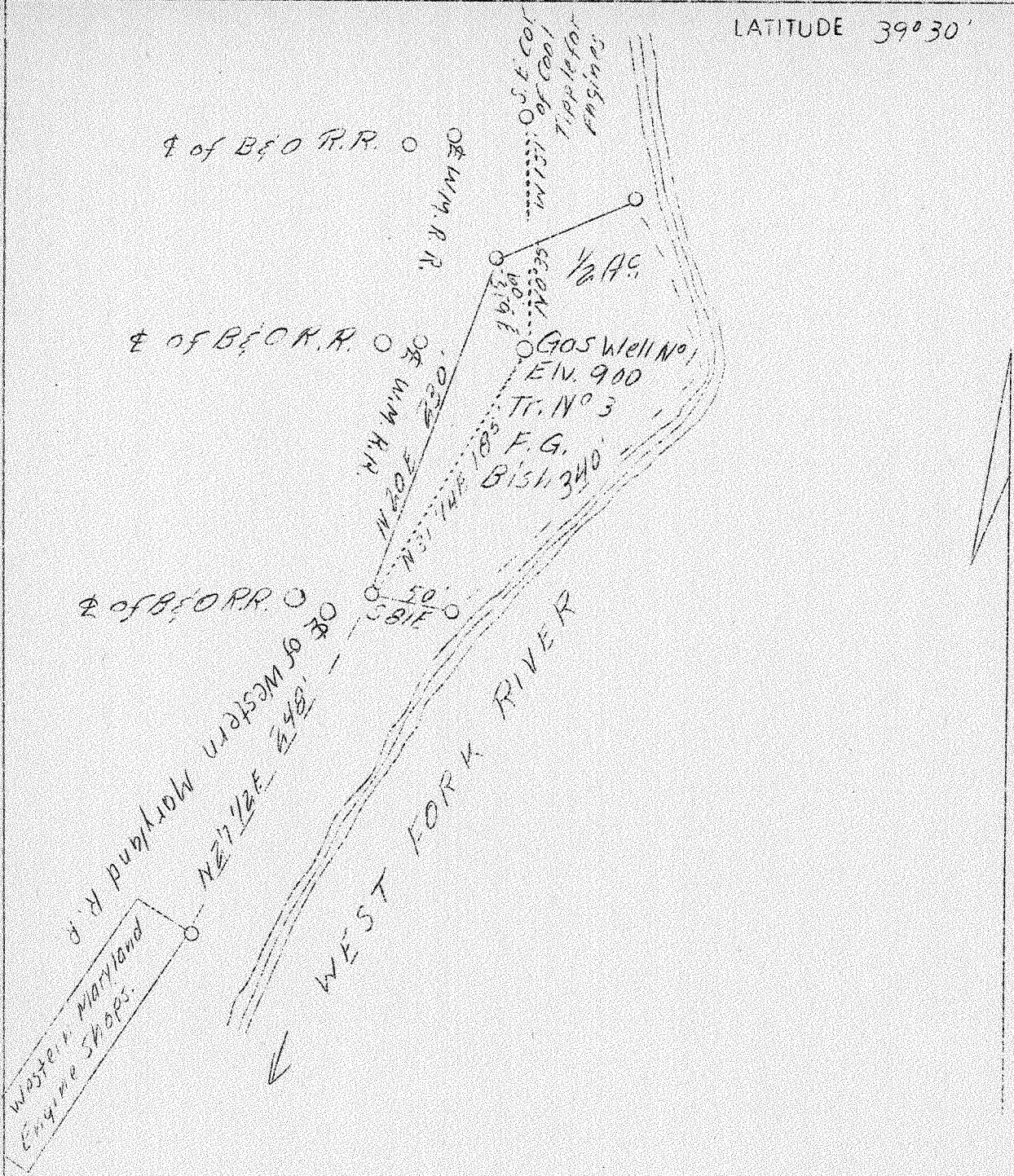


LATITUDE 39°30'

LONGITUDE 80°15'



Below level of Pittsburg Coal

0.43W 0.43W
 3.68S 3.72S

ABD

OCT - 3 1939

Company	F. G. Bish
Address	Clarksburg, W. Va.
Farm	F. G. Bish (Western Md. RR)
Tract	3
Acres	1/2
Well (Farm) No.	1
Elevation (SL)	900
Quadrangle	Clarksburg
County	Marion
District	Grant
Engineer	C. C. Fittro, C. E.
Eng. Reg. No.	818
File No.	XYZ
Drawing No.	122
Date	Aug. 11, 1939
Scale	100' - 1"

(NE)

STATE OF WEST VIRGINIA
 Department of Mines
 OIL & GAS DIVISION
 Charleston

WELL LOCATION MAP

File No. MAR 273-A

x Denotes location of well on U. S. Topographic Maps, scale 1 to 62,500, latitude and longitude lines being represented by border lines as shown.

- Denotes one inch spaces on border line of original tracing.