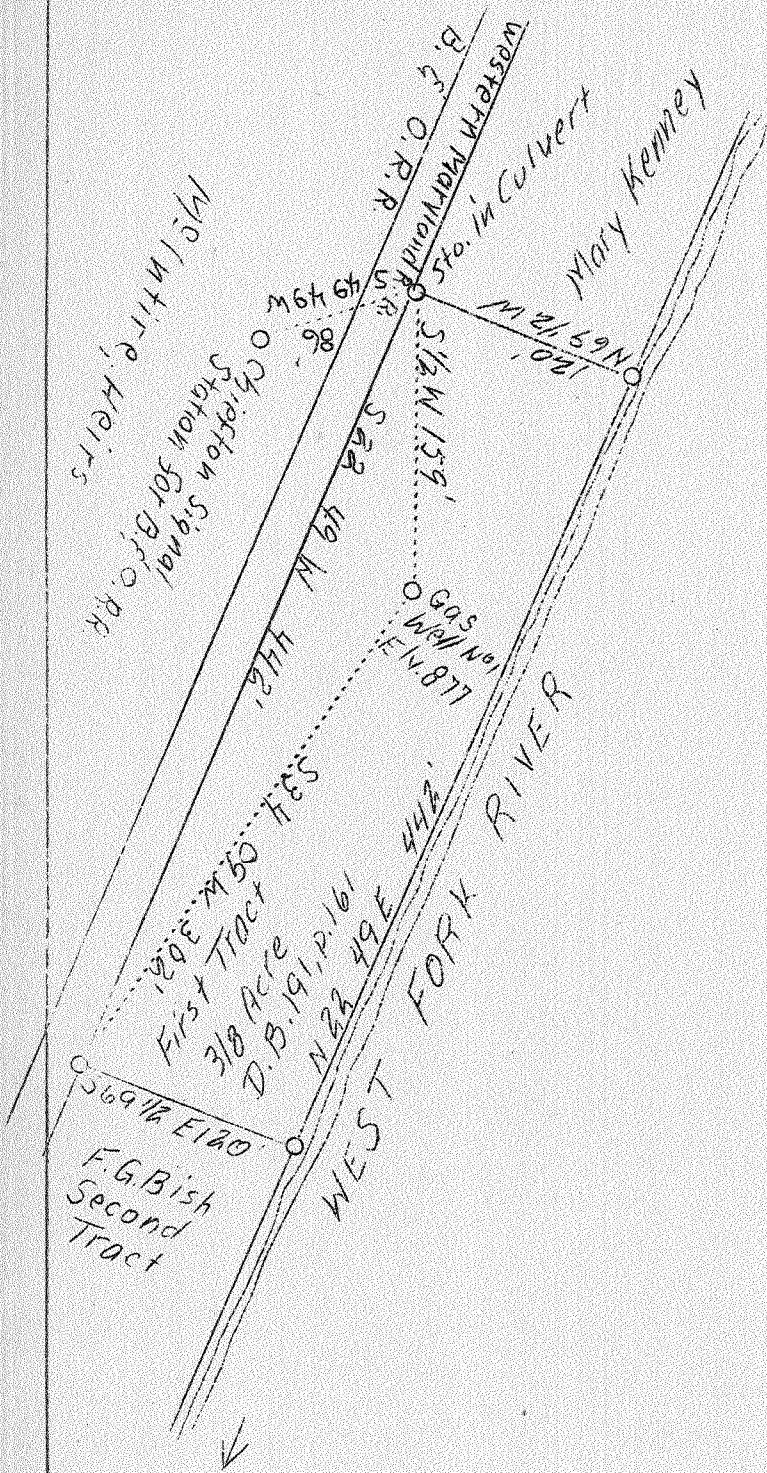


LATITUDE 39° 30'

LONGITUDE 80° 15'



0.53W 0.53W  
 3.87S 3.91S

ABD.

AUG 21 1939

Company F.G. Bish  
 Address Clarksburg, W.Va.  
 Farm F.G. Bish  
 Tract 1  
 Acres 3/8  
 Well (Farm) No. 1  
 El. (S.L.) 877  
 Quadrangle Clarksburg  
 County M Marion  
 District Grant  
 Eng. C.C. Fittro  
 Eng. Reg. No. 818  
 File No. XYZ  
 Drawing No. 118  
 Date 8/7/39  
 Scale 1" = 200'

*(Handwritten initials)*

STATE OF WEST VIRGINIA  
 Department of Mines  
 OIL AND GAS DIVISION  
 Charleston

WELL LOCATION MAP  
 File No. 1101-223-A

x Denotes location of well on U.S. Topographic Maps, scale 1 to 62,500, latitude and longitude lines being represented by border lines as shown.

- Denotes one inch spaces on border line of original tracings.

WEST VIRGINIA DEPARTMENT OF MINES  
OIL AND GAS DIVISION

315

WELL RECORD

Permit No. 223-A  
Clarksburg NE

Oil or Gas Well.....  
(Kind)

Company.....  
 Address.....  
 Farm..... Acres.....  
 Location (waters).....  
 Well No..... Elev.....  
 District..... County.....  
 The surface of tract is owned in fee by.....  
 Address.....  
 Mineral rights are owned by.....  
 Address.....  
 Drilling commenced Oct 1911  
 Drilling completed.....  
 Date shot..... Depth of shot.....  
 Open Flow /10ths Water in..... Inch  
 /10ths Merc. in..... Inch  
 Volume..... Cu. Ft.  
 Rock Pressure..... lbs..... hrs.  
 Oil..... bbls., 1st 24 hrs.  
 Fresh water..... feet..... feet  
 Salt water..... feet..... feet

| Casing and Tubing | Used in Drilling | Left in Well | Packers        |
|-------------------|------------------|--------------|----------------|
| Size              |                  |              |                |
| 16                |                  |              | Kind of Packer |
| 13                | 150              | 220          |                |
| 10                | 1073             |              | Size of        |
| 8 1/4             | 1558             | 1800         |                |
| 6 5/8             |                  |              | Depth set      |
| 5 3/16            |                  |              |                |
| 3                 | 2375             | 2375         | Perf. top      |
| 2                 |                  |              | Perf. bottom   |
| Liners Used       |                  |              | Perf. top      |
|                   |                  |              | Perf. bottom   |

CASING CEMENTED..... SIZE..... No. FT..... Date.....  
 Below lg. coal  
 COAL WAS ENCOUNTERED AT..... FEET..... INCHES  
 FEET..... INCHES..... FEET..... INCHES  
 FEET..... INCHES..... FEET..... INCHES

| Formation     | Color | Hard or Soft | Top  | Bottom | Oil Gas or Water | Depth Found | Remarks |
|---------------|-------|--------------|------|--------|------------------|-------------|---------|
| B. Darkred    |       |              | 440  | 505    | Water 505        |             |         |
| Salt Sand     |       |              | 505  | 1040   | Water 575        |             |         |
| B. Blue       |       |              | 1067 | 1351   |                  |             |         |
| B. Injan Sand |       |              | 1351 | 1450   |                  |             |         |
| SO 25 Sand    |       |              | 1600 | 1918   |                  |             |         |
| Gordon Sand   |       |              | 2155 | 2172   |                  |             |         |
| White Sand    |       |              | 2338 | 2344   | Gas 2341         |             |         |
|               |       |              |      | 2361   |                  |             |         |

