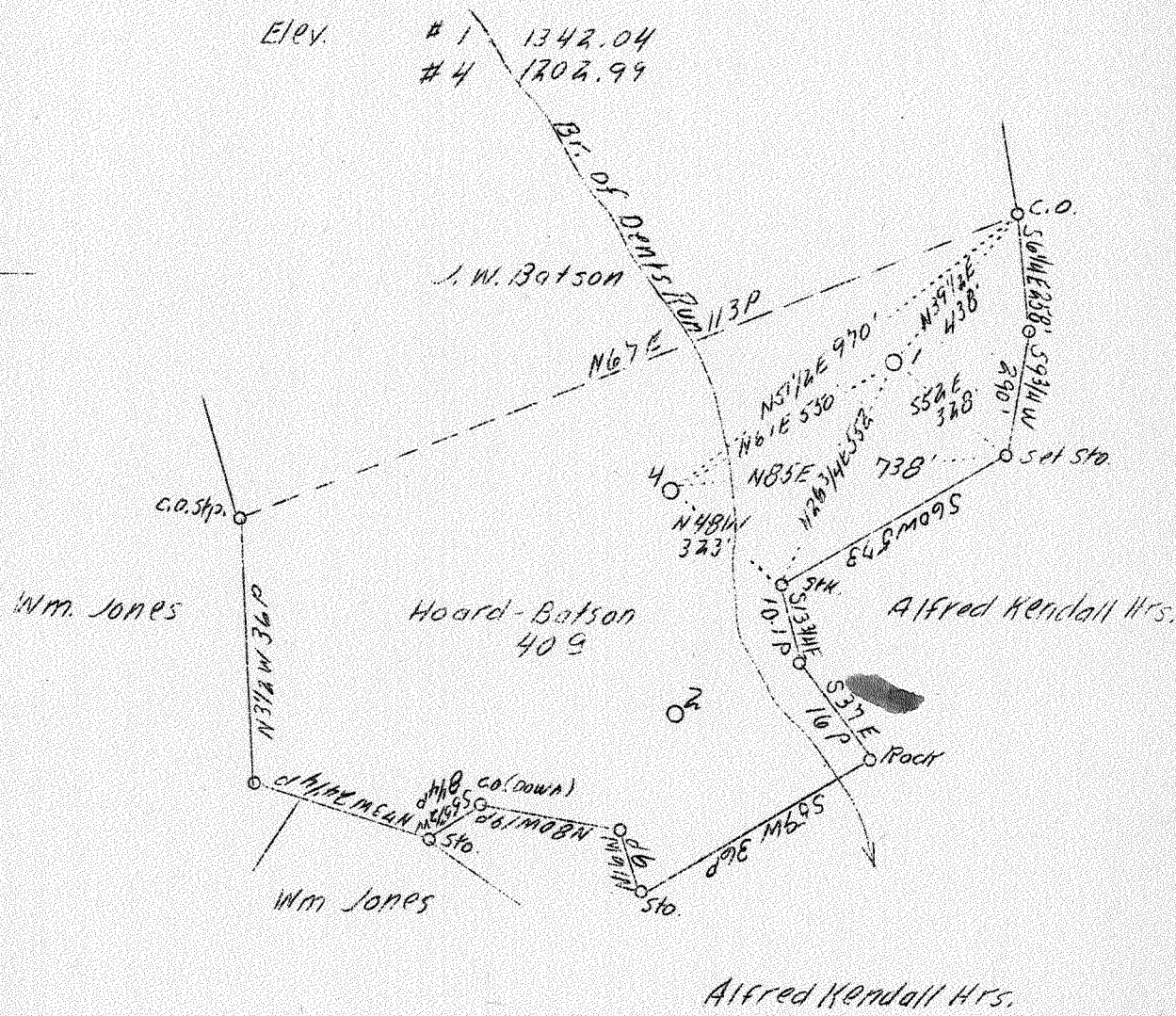


LATITUDE 39° 35'

LONGITUDE 80° 25'

Surface: Jas. P. Charlton
Mannington, W. Va.
Coal: The Union Trust Co. "Trustee"
Pittsburgh, Pa

Elev. # 1 1342.04
4 1202.99



.15W	# 1	0.16W
.45		0.42
# 4		0.29W
.27W		0.45
.43S		

ABD.

AUG 14 1939

Company South Penn Oil Co.
 Address 411-7th Ave., Pgh. Pa.
 Farm Hoard - Batson
 Acres 40
 Lease No. 69215 - 69216
 Well (Farm) No. 1 and 4
 Elevation (SL) 1-1342.04 - 4-1202.99
 Quadrangle Mannington
 County Marion
 District Mannington
 Engineer E. C. Tabler
 Eng. Reg. No. -
 Date June 26, 1939
 Scale 1" - 400'

(SW)

STATE OF WEST VIRGINIA
 Department of Mines
 OIL & GAS DIVISION
 Charleston

WELL LOCATION MAP

File No. MOI-221-222-A

X Denotes location of well on U. S. Topographic Maps, scale 1 to 62,500, latitude and longitude lines being represented by border lines as shown.

- Denotes one inch spaces on border line of original tracing.

WEST VIRGINIA DEPARTMENT OF MINES
OIL AND GAS DIVISION

320

WELL RECORD

Permit No. *222-A*
Mannington J.W.

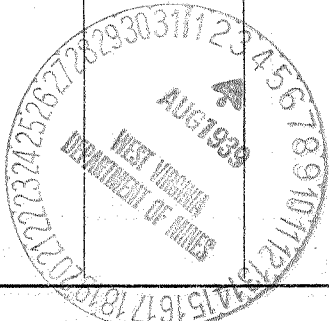
Oil or Gas Well OIL
(Kind)

Company South Penn Oil Company
Address 411 Seventh Ave., Pittsburgh, Pa.
Farm Hoard-Batson Acres 40
Location (waters) Dents Run
Well No. 4 Elev. 1202.99'
District Mannington County Marion
The surface of tract is owned in fee by Jas. D. Charlton
Mannington Address W. Va.
Mineral rights are owned by Zebedee Batson
R. D. No. 5 Address Mannington, W. Va.
Drilling commenced Nov. 8, 1916
Dec. 20, 1916
Drilling completed 6-16
Date shot 6-28-20 Depth of shot B. Injun
Open Flow /10ths Water in -- Inch
/10ths Merc. in -- Inch
Volume -- Cu. Ft.
Rock Pressure -- lbs. -- hrs.
Oil 40 bbls., 1st 24 hrs.
Fresh water -- feet -- feet
Salt water -- feet -- feet

Casing and Tubing	Used in Drilling	Left in Well	Packers
Size			Kind of Packer
16			
13			
10	348' 2"		Size of
8 1/4	1464' 9"		
6 5/8	2227' 9"		Depth set
5 3/16			
3			Perf. top
2			Perf. bottom
Liners Used			Perf. top
			Perf. bottom

CASING CEMENTED -- SIZE -- No. FT. -- Date --
COAL WAS ENCOUNTERED AT 867 FEET 48 INCHES
968 FEET 96 INCHES FEET INCHES
FEET INCHES FEET INCHES

Formation	Color	Hard or Soft	Top	Bottom	Oil Gas or Water	Depth Found	Remarks
Mapletown Coal			867	871			
Pittsburgh Coal			968	976			
Little Dunkard Sand			1350	1385			
Big Dunkard Sand			1420	1530			
Gas Sand			1710	1775			
Salt Sand			1785	1855			
2nd Salt Sand			1860	1900			
Little Lime			2190	2200			
Pencil Cave			2200	2205			
Big Lime			2205	2274			
Big Injun Sand			2274				
					Oil	2350	
Total Depth				2356			



AUG 24 1939

