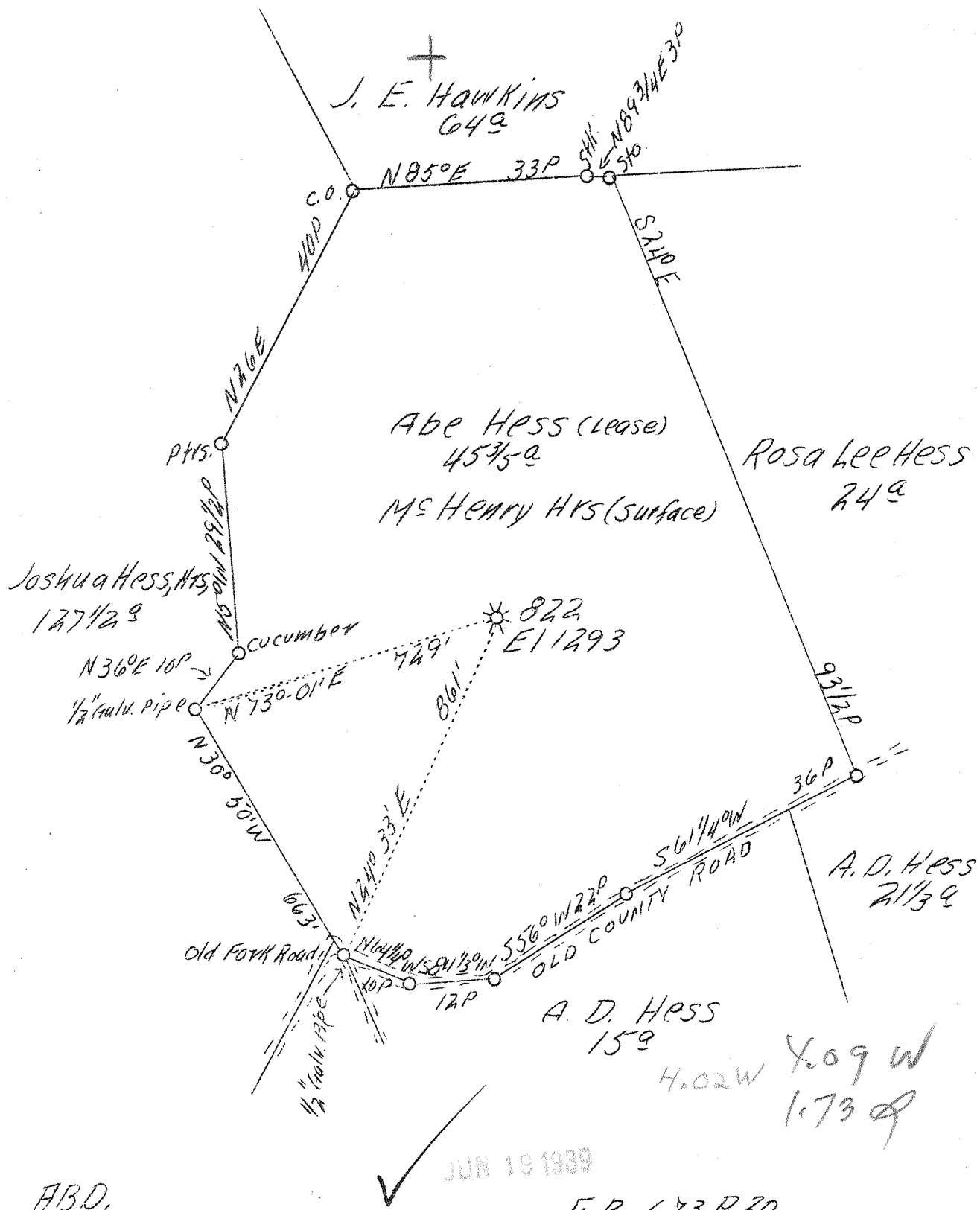


LATITUDE 39° 30'

LONGITUDE 80° 15'



ABD.

F.B. 673 P 20

Company	Hope Natural Gas Co.
Address	Clarksburg, W. Va.
Farm	Abe Hess
Acres	45-3/5
Lease No.	4966
Serial No.	822
Elevation (SL)	1293
Quadrangle	Clarksburg
County	Marion
District	Mannington
Engineer	W. M. Bowers
Eng. Reg. No.	900
Date	June 7, 1939
Scale	1" - 20 poles



STATE OF WEST VIRGINIA  
 Department of Mines  
 OIL & GAS DIVISION  
 Charleston

WELL LOCATION MAP

File No. Mar - 214 A

x Denotes location of well on U. S. Topographic Maps, scale 1 to 62,500, latitude and longitude lines being represented by border lines as shown.

- Denotes one inch spaces on border line of original tracing.

STATE OF WEST VIRGINIA  
DEPARTMENT OF MINES  
OIL AND GAS DIVISION

318

WELL RECORD

Handwritten: *Hand*  
Permit No. 214-A  
Clarksburg NE

Oil or Gas Well Gas  
(Kind)

Company Hope Natural Gas Company  
 Address Clarksburg, W. Va.  
 Farm Abraham Hess Acres 50  
 Location (waters) Tevebaugh Creek  
 Well No. 822 Elev. \_\_\_\_\_  
 District Lincoln County Marion  
 The surface of tract is owned in fee by \_\_\_\_\_  
 Address \_\_\_\_\_  
 Mineral rights are owned by \_\_\_\_\_  
 Address \_\_\_\_\_  
 Drilling commenced 3-5-1906  
 Drilling completed 4-24-1906  
 Date shot 6-12-1919 Depth of shot 5th  
 Open Flow /10ths Water in \_\_\_\_\_ Inch  
 /10ths Merc. in \_\_\_\_\_ Inch  
 Volume \_\_\_\_\_ Cu. Ft.  
 Rock Pressure \_\_\_\_\_ lbs. \_\_\_\_\_ hrs.  
 Oil \_\_\_\_\_ bbls., 1st 24 hrs.  
 Fresh water None recorded feet \_\_\_\_\_ feet  
 Salt water None recorded feet \_\_\_\_\_ feet

Casing and Tubing	Used in Drilling	Left in Well	Packers
Size			
16			Kind of Packer
13			
10	587	Pulled	Size of
8 1/4	1632	1632	
6 5/8	1906	1906	Depth set
5 3/16	2826	2826	
3			Perf. top
2	3002	Pulled	Perf. bottom
Liners Used			Perf. top
			Perf. bottom

CASING CEMENTED \_\_\_\_\_ SIZE \_\_\_\_\_ No. FT. \_\_\_\_\_ Date \_\_\_\_\_  
**Not cemented**  
 COAL WAS ENCOUNTERED AT 543 FEET 96 INCHES  
 \_\_\_\_\_ FEET \_\_\_\_\_ INCHES FEET \_\_\_\_\_ INCHES  
 \_\_\_\_\_ FEET \_\_\_\_\_ INCHES FEET \_\_\_\_\_ INCHES

Formation	Color	Hard or Soft	Top	Bottom	Oil Gas or Water	Depth Found	Remarks
Pittsburgh Coal			543	551			
Dunkard Sand			1025	1130			
Gas Sand			1210	1340			
First Salt Sand			1502	1590			
Little Lime			1850	1860			
Pencil Cave			1860	1865			
Big Lime			1865	1945			
Big Injun Sand			1945	2025			
Fifty Foot Sand			2470	2550	Gas	2472-2474	
Gordon Stray Sand			2767	2787			
Gordon Sand			2792	2814			
Fourth Sand			2850	2858			
Fifth Sand			2934	2952	Gas	2936-2942	
Total Depth			3002				

