

Latitude

Longitude

1.915  
90w

Topo Location

7.5' Loc. \_\_\_\_\_ 15' Loc. \_\_\_\_\_  
\_\_\_\_\_ (calc.) \_\_\_\_\_

Company \_\_\_\_\_

Farm \_\_\_\_\_

15' Quad \_\_\_\_\_  
(sec.)

7.5' Quad Grant Town

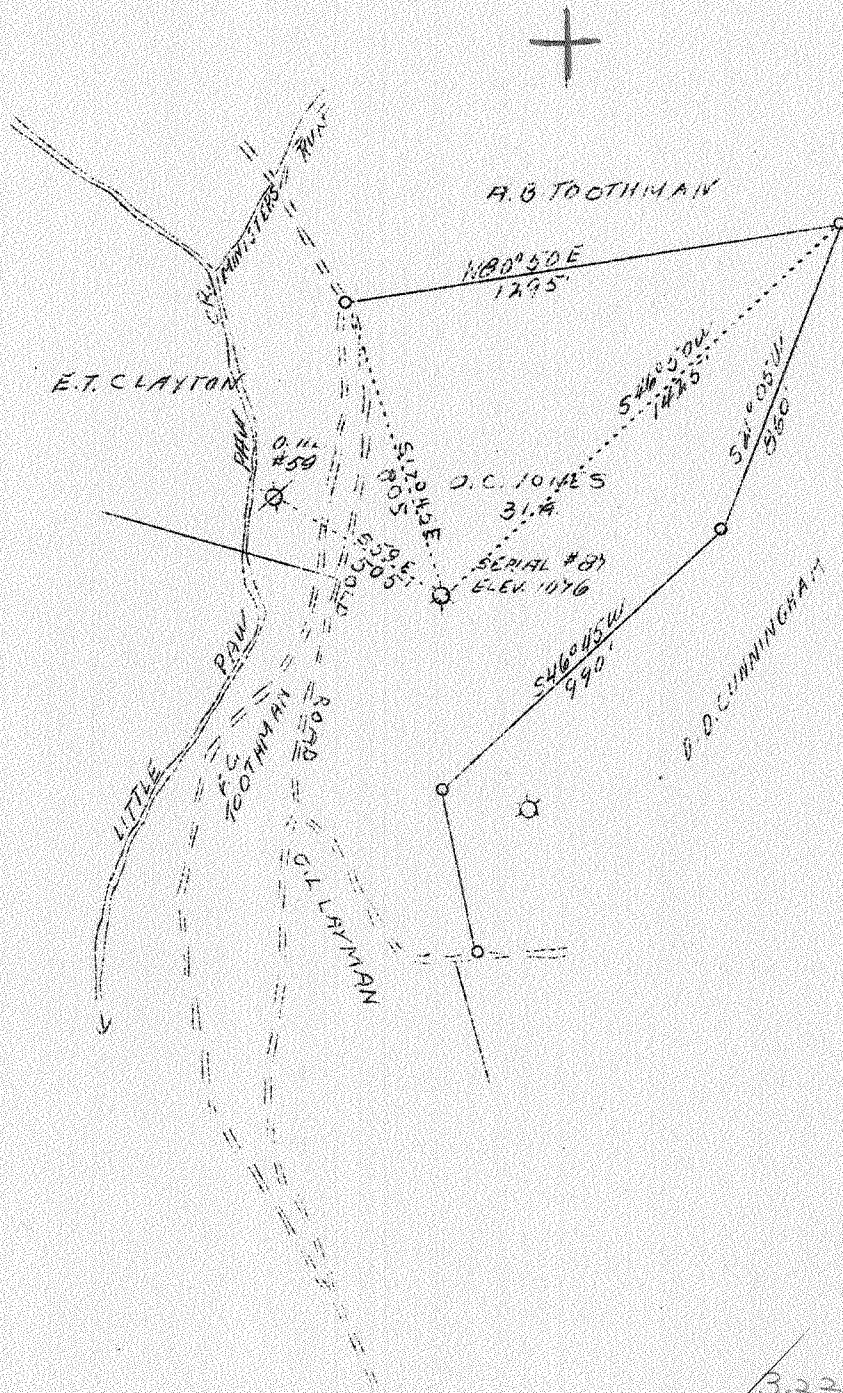
District Paw Paw

WELL LOCATION PLAT

County 049 Permit 30208

LATITUDE 39° 35'

LONGITUDE 80° 05'



✓ 3,22W 3,27W  
1,91 R

ABD.

23 1939

Company	Owens Illinois Glass Company - Gas Dept.,	STATE OF WEST VIRGINIA
Address	Box 1375, Charleston, W.Va.	Department of Mines
Farm	O. C. Jones	OIL & GAS DIVISION
Acres	31	Charleston
Well (Farm) No.	-	WELL LOCATION MAP
Serial No.	87	File No. <u>MAR-208-A</u>
Elevation (SL)	1076	
Quadrangle	Blacksville	
County	Marion	
District	Paw Paw	
Engineer	T. S. Flournoy	x Denotes location of well on U. S. Topographic Maps, scale 1 to 62,500, latitude and longitude lines being represented by border lines as shown.
Eng. Reg. No.	269	- Denotes one inch spaces on border line of original tracing.
Date	Jan. 11, 1939	
Scale	1" - 500'	

O.C. Jones

208A

Marion District, Marion County, W. Va.  
 By Owen-Williams Glass Co., Gas Dept., Box 1375, Charleston, W. Va.  
 On 31 acres, on Little Sugar Creek.  
 Elevation, 1076' ±.  
 Surface and minerals owned by O. C. Jones, Riverdale, W. Va.  
 Drilling commenced Jan. 15, 1926; completed, Feb. 20, 1926.  
 Shot Feb. 25, 1926, at 1943-1941'.  
 Oil, 22 bbls., lost 24 hrs.  
 Salt water at 1333'.  
 10" casing, 1951'; 8" casing, 1922'; 6" casing, 1663'; 2" tubing, 1911'.  
 Casing cemented: 10", 100'.  
 Core was encountered at 375-322 and 320-317'.  
Oil well. Amendment reported to Dept. of Mines Jan. 11, 1933.  
 Award to NE from Mrs. Griffith March 6, 1933.

	Top.	Bottom.
Surface gravel, etc.	0	6
Sand	6	60
Lime and slate	60	275
Keokuk (Sandstone) Coal	275	282
Lime	282	370
Slate	370	380
Sand	380	390
Slate and lime	390	397
Pittsburgh Coal	397	397
Slate and lime	397	470
Little Andrew Sand	470	500
Slate and lime	500	560
Big Andrew Sand	560	1015
Slate and lime	1015	1018
Gas sand	1018	1118
Slate and lime	1118	1215
Heavy salt sand	1215	1260
Slate	1260	1325
Normal salt sand (also fill with water, 1325')	1325	1570
Red rock	1570	1570
Lime	1570	1600
Slate	1600	1628
Little lime	1628	1675
Pinell Cove	1675	1680
Big lime	1680	1730
Big Injun Sand (gas, 1730-58', 105,000 cu. ft.; blow out) (gas and oil, 1686-64')	1730	1871
Break in Big Injun Sand (red rock)	1760	1763
Slate and lime shells	1871	1921
Lime	1921	1931
Total depth		1931



WEST VIRGINIA DEPARTMENT OF MINES  
OIL AND GAS DIVISION

310

WELL RECORD

AP 228-A

Permit No. ....

Oil or Gas Well Oil Well  
(Kind)

Company Owens-Illinois Glass Co., Gas Dept.  
 Address P. O. Box 1375, Charleston, W. Va.  
 Farm O. C. Jones Acres 31  
 Location (waters) Little Paw Paw Creek  
 Well No. 87 Elev. 1076'  
 District Paw Paw County Marion  
 The surface of tract is owned in fee by O. C. Jones  
 Address Rivesville, W. Va.  
 Mineral rights are owned by O. C. Jones,  
 Address Rivesville, W. Va.  
 Drilling commenced January 18th, 1926  
 Drilling completed February 20th, 1926  
 Date shot February 26, 1926 Depth of shot 1849-1861  
 Open Flow /10ths Water in ..... Inch  
 /10ths Merc. in ..... Inch  
 Volume ..... Cu. Ft.  
 Rock Pressure ..... lbs. .... hrs.  
 Oil ..... 20 bbls., 1st 24 hrs.  
 Fresh water ..... feet ..... feet  
 Salt water 1338 feet ..... feet

Casing and Tubing	Used in Drilling	Left in Well	Packers
Size			Kind of Packer.....
16.....			
13.....			
10.....	<u>451'</u>	<u>451'</u>	Size of.....
8 1/4.....	<u>1322'</u>	<u>1322'</u>	
6 5/8.....	<u>1663'</u>	<u>1663'</u>	Depth set.....
5 3/16.....			
3.....			Perf. top.....
2.....	<u>1911'</u>	<u>1911'</u>	Perf. bottom.....
Liners Used.....			Perf. top.....
			Perf. bottom.....

CASING CEMENTED 10" SIZE 100 No. FT. .... Date  
 COAL WAS ENCOUNTERED AT 275 FEET 84 INCHES  
389 FEET 96 INCHES FEET INCHES  
 FEET INCHES FEET INCHES

Formation	Color	Hard or Soft	Top	Bottom	Oil Gas or Water	Depth Found	Remarks
Surface Gravels etc.			0	6			
Sand			6	60			
Line & Slate			60	275			
Mapletown Coal			275	282			
Lime			282	330			
Slate			330	360			
Sand			360	380			
Slate & Lime			380	389			
Pittsburgh Coal			389	397			
Slate & Lime			397	770			
Little Dunkard Sand			770	800			
Slate & Lime			800	960			
Big Dunkard Sand			960	1015			
Slate & Lime			1015	1042			
Gas Sand			1042	1148			
Slate & Lime			1148	1215			
First Salt Sand			1215	1280			
Slate			1280	1315			
Second Salt Sand			1315	1530	Salt Water	1338'	Hole full
Red Rock			1530	1540			
Lime			1540	1600			
Slate			1600	1648			
Little Lime			1648	1655			
Pencil Gave			1655	1660			
Big Lime			1660	1730			
Injun Sand			1730	1871	Gas	1754-58'	105,000 cu. ft. blew out
Break in					Gas & Oil	1848'-64'	
Injun Sand (Red Rock)			1760	1763			
Slate & Lime Shells			1871	1921			
Lime			1921	1931			
Total depth				1931			

