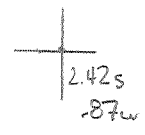


39°30'00"

Latitude

80°15'00"

Longitude



Topo Location

7.5' Loc. _____ 15' Loc. _____
(calc.) _____

Company Potts + WV Gas

Farm Geo W Mullen #1

15' Quad _____
(sec.) _____

7.5' Quad Shannon

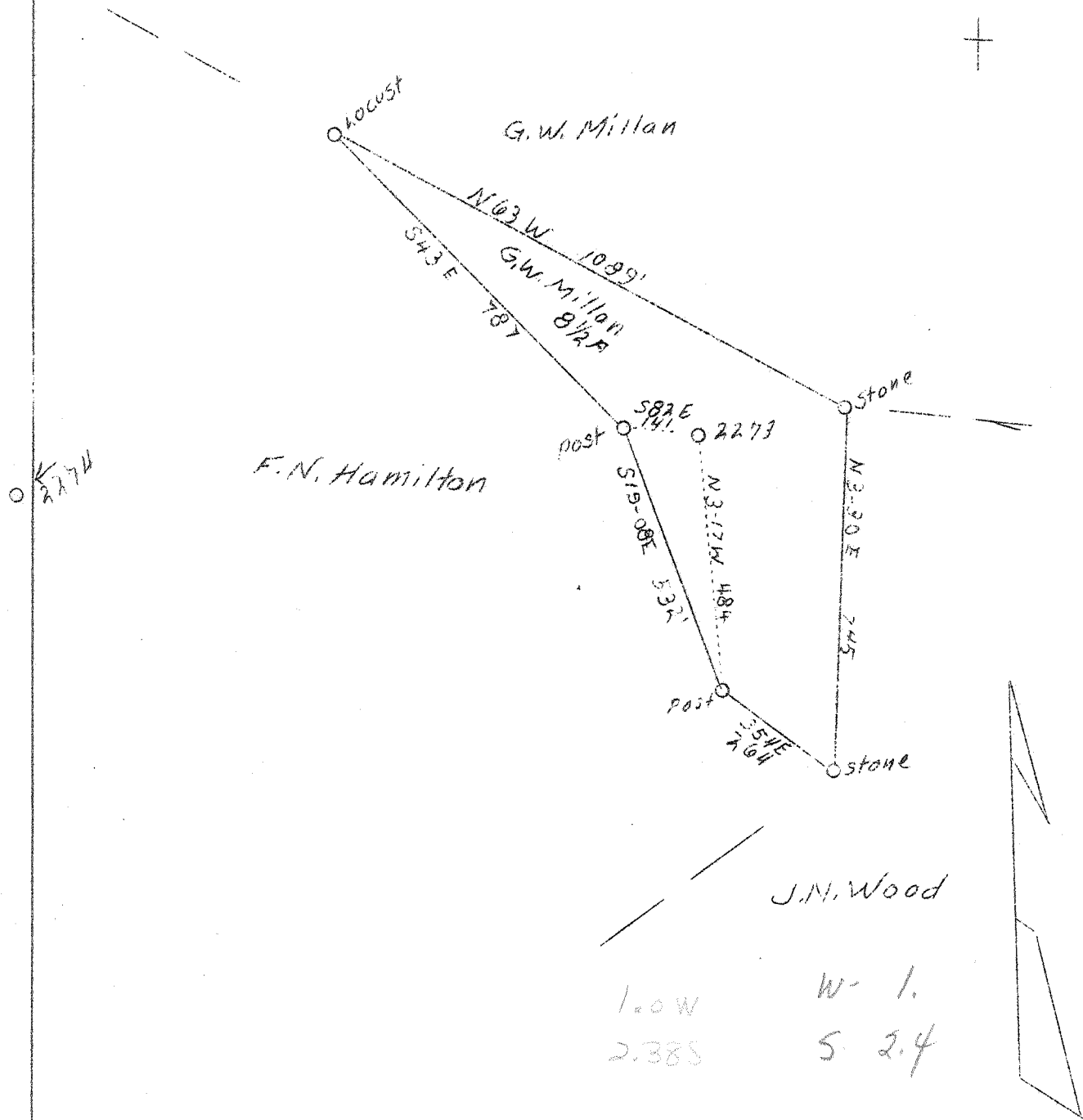
District Lincoln

WELL LOCATION PLAT

County 049 Permit 30205

LATITUDE 39° 30'

LONGITUDE 80° 15'



ABD.

Company Pittsburgh & W.Va. Gas Co.
 Address Clarksburg, W. Va.
 Fam Geo. W. Millan
 Acres 8-1/2
 Lease No. 10939
 Well (Fam) No. One
 Serial No. 2273
 Quadrangle Clarksburg N.E. 2-4
 Elevation (SL) 1339 V.A.
 County Marion
 District Lincoln
 Engineer James D. Jeffries
 Eng. Reg. No. -
 Date Dec. 15, 1938
 Scale 1" - 300'

STATE OF WEST VIRGINIA
 Department of Mines
 OIL & GAS DIVISION
 Charleston

WELL LOCATION MAP

File No. MOR-205-A

x Denotes location of well on U. S. Topographic Maps, scale 1 to 62,500, latitude and longitude lines being represented by border lines as shown.

- Denotes one inch spaces on border line of original tracing.