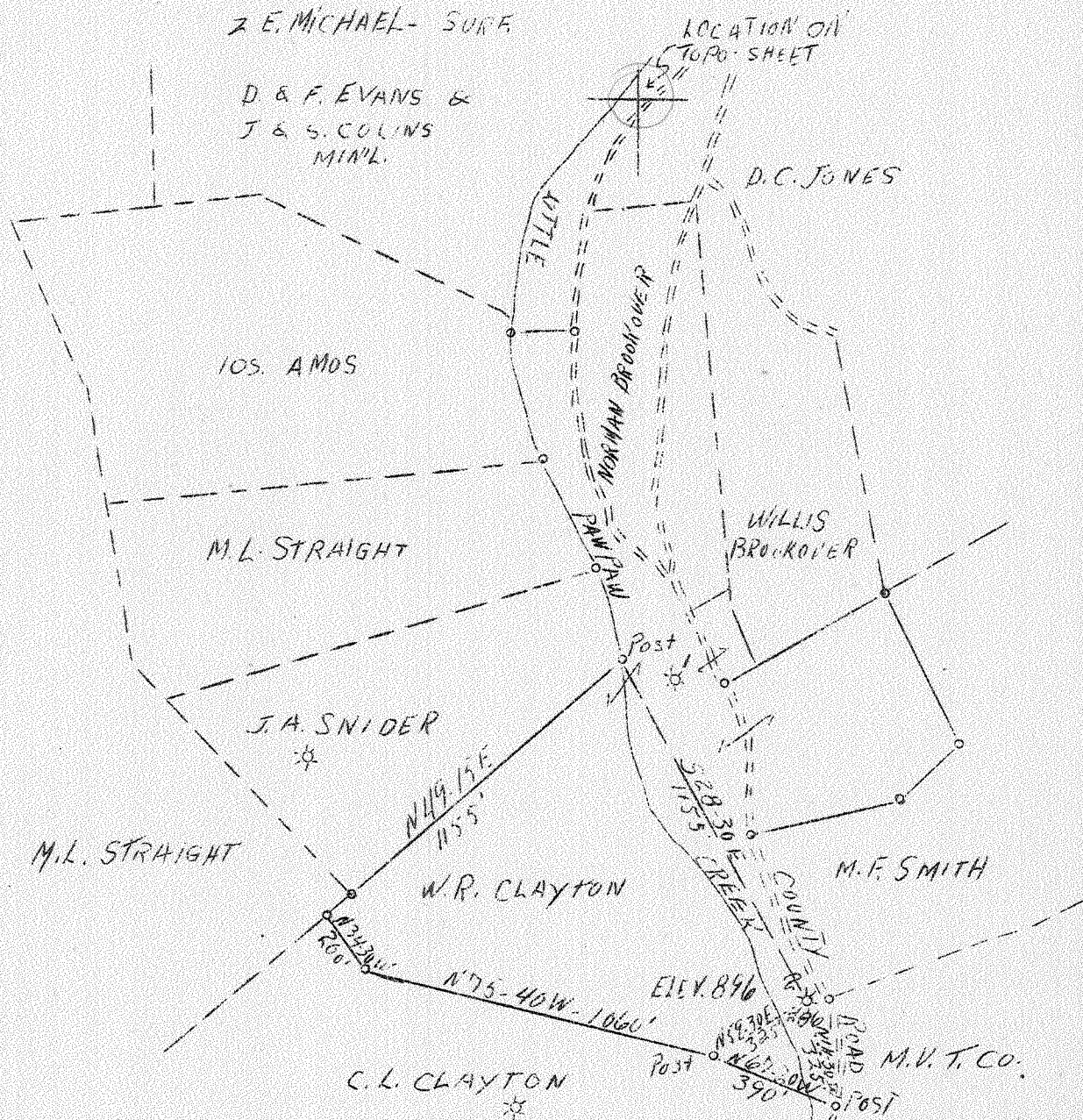


LATITUDE 39° 35'

LONGITUDE 80° 06'



To Be Abandoned

APR 18 1938

3.12 W  
 2.46 S  
 3.18 W  
 2.5 S

Company Owens Illinois Glass Co.  
 Address Charleston, W.Va.  
 Farm W.R. Clayton  
 Tract Acres 40 Lease No. 316  
 Well (Farm) No. 2 Serial No. 86  
 Quadrangle Blacksville  
 County Marion  
 District PawPaw  
 Engineer T.S. Flournoy  
 Engineer's Registration No. 269  
 File No. Drawing No.  
 Date April 5, 1938 Scale 1"=500'

STATE OF WEST VIRGINIA  
 Department of Mines  
 OIL AND GAS DIVISION  
 CHARLESTON

WELL LOCATION MAP  
 File No. Mar-187-A

Denotes location of well on United States Topographic Maps, scale 1 to 62,500, latitude and longitude lines being represented by border lines as shown.

Denotes one inch spaces on border line of original tracing.

Faw Faw District, Marion County, W. Va.  
 By Owens-Illinois Glass Co., Gas Dept., Box 1375, Charleston, W. Va.  
 On 40 acres, on Faw Faw Creek.  
 Elevation, 896' l. (ground).  
 Drilling commenced Dec. 7, 1925; completed, Jan. 7, 1926.  
 Surface owned by W. E. Clayton, Bivesville, W. Va.  
 Open flow, 14 pounds in 2".  
 Volume, 2,500,000 cu. ft.  
 Rock pressure, 500 lbs. in 24 hrs.  
 Fresh water at 1095, 1190 and 1207'.  
 10" casing, 285'; 8 1/2", 1199'; 6 1/2", 1536'; 2" tubing, 1600'.  
 10" casing cemented, 109', 12-26-25, from 176' to 285'.  
 Coal was encountered at 115-120 and 226-234'.  
 Heater anchor packer, 2 x 6 1/2, set at 1572' 9".  
 Perf. top 1598'; perf. bot. 1603'.  
 Gas well, ~~mentioned~~ reported to Dept. of Mines April 5, 1938.  
 Record to RPT from Mrs. Griffith April 14, 1938.

	Top.	Bottom.
Gravel	0	10
Lime and slate	10	80
Slate	80	115
Mapletown (Swickley) Coal	115	120
Lime and slate	120	226
Pittsburgh Coal	226	234
Slate	234	660
Little Dunkard Sand	660	700
Slate	700	800
Big Dunkard Sand	800	860
Slate	860	900
Gas Sand	900	953
Slate	953	960
Sand	960	1000
Slate	1000	1065
First Salt Sand (water, 1095', 3 bailers per hour)	1065	1140
Slate	1140	1155
Second Salt Sand (water, 1190', hole full; water, 1207', 2 1/2 bailers per hour)	1155	1310
Slate	1310	1330
Red rock	1330	1350
Lime	1350	1370
Red rock	1370	1481
Lime	1481	1502
Slate	1502	1508
Little Lime	1508	1520
Pencil Cave	1520	1524
Big Lime	1524	1587
Big Injun Sand (gas, 1591'-1598', 3,000,000 cu. ft.)	1587	1607
Total depth drilled		1607
(Did not drill through Injun Sand).		

ATTACHED TO NO. 292 under same number is record of DRIPPING:

Drilling commenced Dec. 11, 1926; completed, Jan. 31, 1937.  
 Shot Dec. 28, 1926, at 2095-2110'.  
 (over)

Open flow, in Gantz Sand, 82,000 cu. ft.

Rock pressure, 157 lbs. in 24 hrs.

5 1/2" casing, 147'; 3" tubing, 2154'; 2", 1600' (pulled);  
liner used, 147' of 5 1/2" from 1668-1815'.

Farmaco hook wall packer, 6" x 3", set at 1561'.

Perf. top 1586; perf. bot. 1591; perf. top 2100; perf. bot. 2105'.

REMARK: Liner was set for the purpose of shutting off water and oil at bottom of Big Injun Sand.

Heater hook wall packer, 6" x 5", set at 1815' (bottom of liner).

Heater screw down packer, 6" x 5", set at 1668' (top of liner).

Gas well. Abandonment reported to Dept. of Mines April 5, 1938.

Record to ROT from Mrs. Griffith April 11, 1938.

Pulled 1600' of 2" tubing and 2" x 6" packer.

	Top.	Bottom.
Drilling commenced at		1607
Big Injun Sand (gas, 1665-1667'; 204,000 cu. ft.; blew down) (oil and water, 1693', show)		1607 - 1715
Slate and shells		1715 - 1796
Moren Sand		1796 - 1842
Slate and shells		1842 - 2068
Gantz Sand (gas, 2100-2104', 82,000 cu. ft.)		2068 - 2121
Slate		2121 - 2126
Fifty-foot Sand		2126 - 2160
Total depth		2160

(Did not drill through 50-ft. Sand).

WEST VIRGINIA DEPARTMENT OF MINES  
OIL AND GAS DIVISION

292

WELL RECORD

Permit No. MAR-157-A

Oil or Gas Well Gas Well  
(Kind)

Company <u>Owens-Illinois Glass Co., Gas Dept.</u>	Casing and Tubing	Used in Drilling	Left in Well	Packers
Address <u>P. O. Box 1375, Charleston, W. Va.</u>	Size			
Farm <u>W. R. Clayton</u> Acres <u>40</u>	16			Kind of Packer <u>Heeter Anchor</u>
Location (waters) <u>Paw Paw</u>	13			Size of <u>2" x 6 5/8"</u>
Well No. <u>86</u> Elev. <u>896' Gr.</u>	10	<u>285'</u>	<u>285'</u>	Depth set <u>1572' 9"</u>
District <u>Paw Paw</u> County <u>Marion</u>	8 1/4	<u>1199'</u>	<u>1199'</u>	Perf. top <u>1598'</u>
The surface of tract is owned in fee by <u>W. R. Clayton</u>	6 5/8	<u>1536'</u>	<u>1536'</u>	Perf. bottom <u>1603'</u>
Address <u>Rivesville, W. Va.</u>	5 3/16			Perf. top
Mineral rights are owned by	3			Perf. bottom
Address	2			
Drilling commenced <u>December 7th, 1925</u>	Liners Used			
Drilling completed <u>January 7th, 1926</u>				
Date shot				
Depth of shot				
Open Flow <u>14 pounds in 2</u> Inch				
/10ths Water in				
/10ths Merc. in				
Volume <u>2,500,000</u> Cu. Ft.	CASING CEMENTED <u>10"</u> SIZE <u>109</u> No. FT. <u>12-28-25</u>			
Rock Pressure <u>500</u> lbs. <u>24</u> hrs.	<u>from 176' to 285'</u>			
Oil <u>1095</u> feet <u>1190'</u> <u>1207'</u> bbls., 1st 24 hrs.	COAL WAS ENCOUNTERED AT <u>115</u> FEET <u>60</u> INCHES			
Fresh water	<u>226</u> FEET <u>96</u> INCHES FEET INCHES			
Salt water	FEET INCHES FEET INCHES			

Formation	Color	Hard or Soft	Top	Bottom	Oil Gas or Water	Depth Found	Remarks
Gravel			0	10			
Lime & Slate			10	80			
Slate			80	115			
Mapletown Coal			115	120			
Lime & Slate			120	226			
Pittsburgh Coal			226	234			
Slate			234	660			
Little Dunkard Sand			660	700			
Slate			700	800			
Big Dunkard Sand			800	860			
Slate			860	900			
Gas Sand			900	953			
Slate			953	960			
Sand			960	1000			
Slate			1000	1065			
First Salt Sand			1065	1140	Water	1095'	3 bails per hr.
Slate			1140	1155			
Second Salt Sand			1155	1310	Water	1190'	Hole full
Slate			1310	1330	"	1207'	2 1/2 bails per hr.
Red Rock			1330	1350			
Lime			1350	1370			
Red Rock			1370	1481			
Lime			1481	1502			
Slate			1502	1508			
Little Lime			1508	1520			
Pencil Cave			1520	1524			
Big Lime			1524	1587			
Injun Sand			1587	1607	Gas	1591'-1598'	3,000,000
Total depth drilled				1607			
Did not drill through Injun Sand							

WEST VIRGINIA DEPARTMENT OF MINES  
OIL AND GAS DIVISION

292

WELL RECORD  
DRILLING DEEPER

Permit No. .... Oil or Gas Well **Gas Well**  
(Kind)

Company **Owens-Illinois Glass Co., Gas Dept.**  
Address **P. O. Box 1375, Charleston, W. Va.**  
Farm **W. R. Clayton** Acres **40**  
Location (waters) **Paw Paw Creek**  
Well No. **86** Elev. **896'**  
District **Paw Paw** County **Marion**  
The surface of tract is owned in fee by **W. R. Clayton**  
**Rivesville, W. Va.**  
Address  
Mineral rights are owned by **Same**  
Address  
Drilling commenced **December 11th, 1926**  
Drilling completed **January 31st, 1927**  
Date shot **December 28, 1926** Depth of shot **2095-2110'**  
Open Flow /10ths Water in ..... Inch  
/10ths Merc. in ..... Inch  
Volume **in Gantz Sand 82,000** Cu. Ft.  
Rock Pressure **157** lbs. **24** hrs.  
Oil ..... bbls., 1st 24 hrs.  
Fresh water ..... feet ..... feet  
Salt water ..... feet ..... feet

Casing and Tubing	Used in Drilling	Left in Well	Packers
Size			
16			Kind of Packer
13			<b>Permaco Rock Wall</b>
10			Size of
8 1/4			<b>6 5/8" x 3"</b>
6 5/8			Depth set
5 3/16	<b>147'</b>	<b>147'</b>	at <b>1561'</b>
3	<b>2154'</b>	<b>2154'</b>	Perf. top <b>1586'</b>
2	<b>1600'</b>	<b>Pulled</b>	Perf. bottom <b>1591'</b>
Liners Used	<b>147' of 5 3/16"</b>		Perf. top <b>2100'</b>
	<b>from 1668' to 1815'</b>		Perf. bottom <b>2105'</b>

CASING CEMENTED ..... SIZE ..... No. FT. .... Date  
COAL WAS ENCOUNTERED AT ..... FEET ..... INCHES  
..... FEET ..... INCHES ..... FEET ..... INCHES  
..... FEET ..... INCHES ..... FEET ..... INCHES

Formation	Color	Hard or Soft	Top	Bottom	Oil Gas or Water	Depth Found	Remarks
<b>Pulled 1600 ft. of 2" tubing and 2" x 6 5/8" Packer</b>							
<b>Injun Sand</b>			<b>1607</b>	<b>1715</b>	<b>Gas</b>	<b>1685'-1687'</b>	<b>244,000 blow down show</b>
<b>Slate &amp; Shells</b>			<b>1715</b>	<b>1796</b>			
<b>Berea Sand</b>			<b>1796</b>	<b>1842</b>			
<b>Slate &amp; Shells</b>			<b>1842</b>	<b>2068</b>			
<b>Gantz Sand 3</b>			<b>2068</b>	<b>2121</b>	<b>Gas</b>	<b>2100'-2104'</b>	<b>82,000</b>
<b>Slate</b>			<b>2121</b>	<b>2126</b>			
<b>Fifty Foot Sand</b>			<b>2126</b>	<b>2160</b>			
<b>Total depth</b>				<b>2160</b>			
<b>Did not drill through 50 ft. sand</b>							
<b>Remark - Liner was set for the purpose of shutting off water &amp; oil at bottom of Injun Sand.</b>							
			<b>6 5/8" x 5 3/16"</b>				<b>set at 1815 ft. (bottom of liner)</b>
			<b>6 5/8" x 5 3/16"</b>				<b>set at 1668 ft. (top of liner)</b>

