

39°32'30"

Latitude

80°52'08"

Longitude

1.685
.37w

Topo Location

7.5' Loc. _____ 15' Loc. _____
(calc.) _____

Company _____

Farm _____

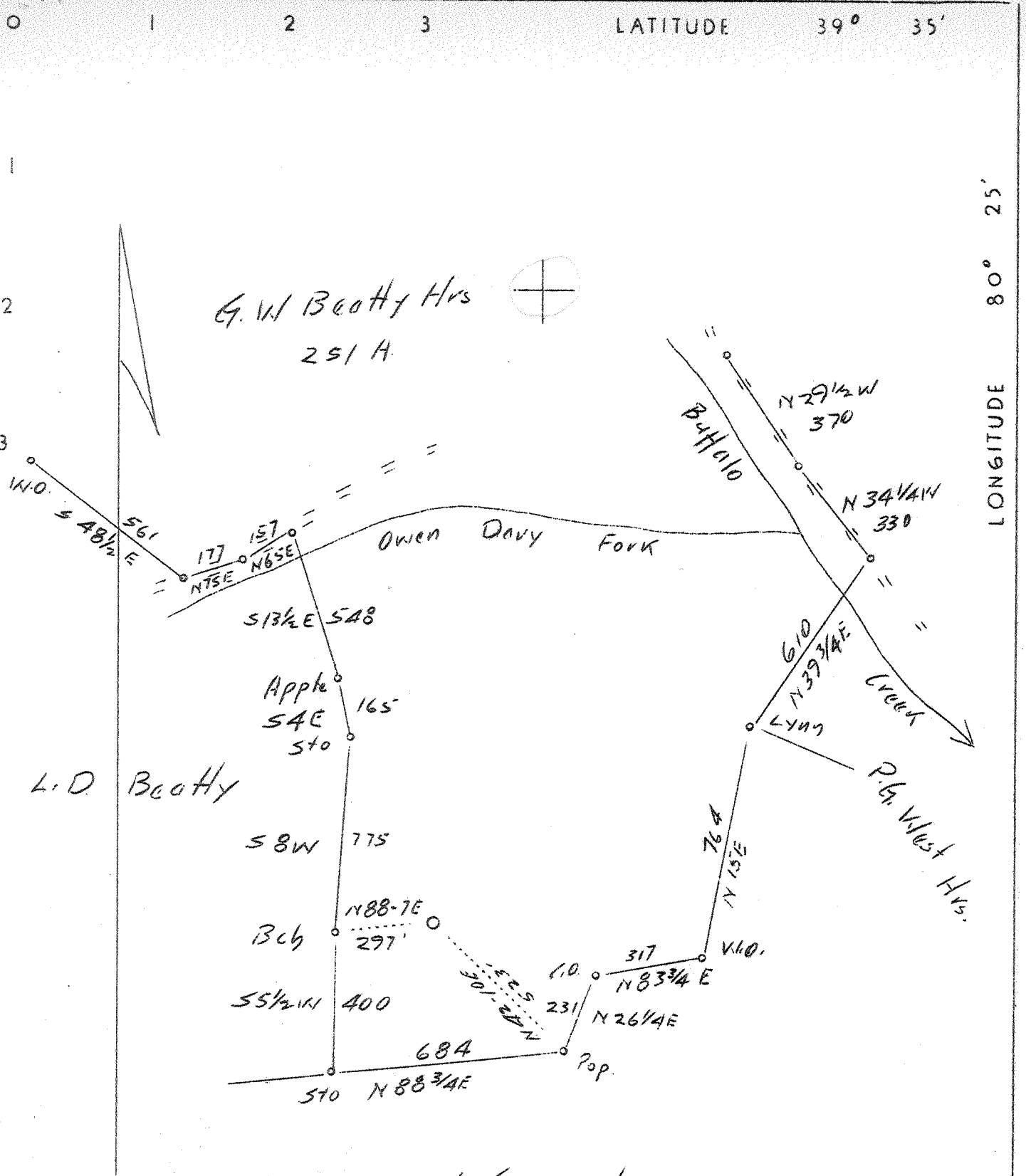
15' Quad _____
(sec.)

7.5' Quad Glover Gap

District Mammington

WELL LOCATION PLAT

County 049 Permit 30171



LATITUDE 39° 35'

LONGITUDE 80° 25'

G. W. Beatty Hrs
251 A

L. D. Beatty

S. J. Gump Hrs.

3.42 W

2.09S 2.112 Q

Abandonment

Company	Pittsburgh Oil & Gas
Address	Farmers Bank Bldg., Pittsburgh, Pa.
Farm	Geo. W. Beatty Hrs.
Tract	1 Acres 251 Lease No.
Well (Farm) No.	10 Serial No.
Quadrangle	Mannington SW
Elevation (Spirit Level)	
County	Marion District Mannington
Engineer	David Weed
Engineer's Registration No.	
File No.	Drawing No.
Date	June 28, 1937 Scale 1"-400'

STATE OF WEST VIRGINIA
Department of Mines
OIL AND GAS DIVISION
CHARLESTON
WELL LOCATION MAP
File No. **MAR-171A**

Denotes location of well on United States Topographic Maps, scale 1 to 62,500, latitude and longitude lines being represented by border lines as shown.

Denotes one inch spaces on border line of original tracing.