



Actual Wellpath Report

Elliott 15H (L-003937) AWP Proj: 23959'
Page 1 of 12



REFERENCE WELLPATH IDENTIFICATION			
Operator	EQT PRODUCTION COMPANY	Well	Elliott 15H (L-003937)
Field	Marion	API	47-049-02505-00-00
Facility	Elliott Pad	Wellbore	Elliott 15H (L-003937) AWB
Slot	Slot 15		

REPORT SETUP INFORMATION			
Projection System	NAD27 / Lambert West Virginia SP, Northern Zone (4701), US feet	Software System	WellArchitect® 6.0
North Reference	Grid	User	Hilpthop
Scale	0.999942	Report Generated	9/6/2021 at 7:32:25 AM
Convergence at slot	0.56° West	Database	WA_MPL_EASTERNUS_Defn

WELLPATH LOCATION						
	Local coordinates		Grid coordinates		Geographic coordinates	
	North[ft]	East[ft]	Easting[US ft]	Northing[US ft]	Latitude	Longitude
Slot Location	96.73	40.86	1751213.09	382004.27	39°32'43.6970"N	80°22'56.0247"W
Facility Reference Pt			1751172.23	381907.55	39°32'42.7371"N	80°22'56.5342"W
Field Reference Pt			1931053.01	433518.91	39°41'24.0000"N	79°44'42.0000"W

WELLPATH DATUM			
Calculation method	Minimum curvature	Patterson 292 (RKB) to Facility Vertical Datum	1370.00ft
Horizontal Reference Pt	Slot	Patterson 292 (RKB) to Mean Sea Level	1370.00ft
Vertical Reference Pt	Patterson 292 (RKB)	Patterson 292 (RKB) to Ground Level at Slot (Slot 15)	28.00ft
MD Reference Pt	Patterson 292 (RKB)	Section Origin	N 0.00, E 0.00 ft
Field Vertical Reference	Mean Sea Level	Section Azimuth	340.29°



Actual Wellpath Report

Elliott 15H (L-003937) AWP Proj: 23959'
Page 2 of 12



REFERENCE WELLPATH IDENTIFICATION			
Operator	EQT PRODUCTION COMPANY	Well	Elliott 15H (L-003937)
Field	Marion	API	47-049-02505-00-00
Facility	Elliott Pad	Wellbore	Elliott 15H (L-003937) AWB
Slot	Slot 15		

WELLPATH DATA (259 stations) † = interpolated, ‡ = extrapolated station

MD [ft]	Inclination [°]	Azimuth [°]	TVD [ft]	Vert Sect [ft]	North [ft]	East [ft]	Grid East [US ft]	Grid North [US ft]	Latitude	Longitude	Closure Dist [ft]	Closure Dir [°]	DLS [°/100ft]	Build Rate [°/100ft]	Turn Rate [°/100ft]
0.00†	0.000	117.720	0.00	0.00	0.00	0.00	1751213.09	382004.27	39°32'43.6970"N	80°22'56.0247"W	0.00	0.000	0.00	0.00	0.00
28.00	0.000	117.720	28.00	0.00	0.00	0.00	1751213.09	382004.27	39°32'43.6970"N	80°22'56.0247"W	0.00	0.000	0.00	0.00	0.00
115.00	0.090	117.720	115.00	-0.05	-0.03	0.06	1751213.15	382004.24	39°32'43.6967"N	80°22'56.0239"W	0.07	117.720	0.10	0.00	0.00
215.00	0.080	87.700	215.00	-0.13	-0.07	0.20	1751213.29	382004.20	39°32'43.6963"N	80°22'56.0221"W	0.21	108.157	0.05	-0.01	-30.02
315.00	0.160	193.570	315.00	-0.27	-0.20	0.24	1751213.33	382004.07	39°32'43.6950"N	80°22'56.0216"W	0.31	129.967	0.20	0.08	105.87
415.00	0.200	202.500	415.00	-0.51	-0.50	0.14	1751213.23	382003.77	39°32'43.6921"N	80°22'56.0229"W	0.51	164.519	0.05	0.04	8.93
515.00	0.200	202.340	515.00	-0.77	-0.82	0.00	1751213.09	382003.45	39°32'43.6889"N	80°22'56.0245"W	0.82	179.714	0.00	0.00	-0.16
615.00	0.210	200.770	615.00	-1.04	-1.15	-0.13	1751212.96	382003.12	39°32'43.6856"N	80°22'56.0262"W	1.16	186.309	0.01	0.01	-1.57
715.00	0.200	196.860	715.00	-1.32	-1.49	-0.24	1751212.85	382002.78	39°32'43.6822"N	80°22'56.0276"W	1.51	189.262	0.02	-0.01	-3.91
815.00	0.260	171.000	815.00	-1.68	-1.88	-0.26	1751212.83	382002.39	39°32'43.6784"N	80°22'56.0277"W	1.90	187.812	0.12	0.06	-25.86
915.00	0.280	173.220	915.00	-2.14	-2.35	-0.19	1751212.90	382001.92	39°32'43.6738"N	80°22'56.0269"W	2.36	184.716	0.02	0.02	2.22
1015.00	0.350	169.960	1014.99	-2.68	-2.89	-0.11	1751212.98	382001.38	39°32'43.6684"N	80°22'56.0258"W	2.89	182.210	0.07	0.07	-3.26
1115.00	0.360	170.060	1114.99	-3.29	-3.50	0.00	1751213.09	382000.77	39°32'43.6624"N	80°22'56.0243"W	3.50	180.067	0.01	0.01	0.10
1215.00	0.330	170.540	1214.99	-3.89	-4.09	0.10	1751213.19	382000.18	39°32'43.6565"N	80°22'56.0229"W	4.10	178.636	0.03	-0.03	0.48
1315.00	0.300	167.510	1314.99	-4.43	-4.63	0.20	1751213.29	381999.64	39°32'43.6512"N	80°22'56.0215"W	4.64	177.511	0.03	-0.03	-3.03
1415.00	0.310	168.940	1414.99	-4.96	-5.15	0.31	1751213.40	381999.12	39°32'43.6461"N	80°22'56.0201"W	5.16	176.559	0.01	0.01	1.43
1515.00	0.320	175.970	1514.99	-5.49	-5.70	0.38	1751213.47	381998.57	39°32'43.6407"N	80°22'56.0191"W	5.71	176.170	0.04	0.01	7.03
1615.00	0.270	188.180	1614.98	-5.97	-6.21	0.37	1751213.46	381998.06	39°32'43.6356"N	80°22'56.0192"W	6.22	176.613	0.08	-0.05	12.21
1715.00	0.230	211.730	1714.98	-6.30	-6.61	0.23	1751213.32	381997.66	39°32'43.6316"N	80°22'56.0209"W	6.62	178.022	0.11	-0.04	23.55
1815.00	0.220	209.650	1814.98	-6.55	-6.95	0.03	1751213.12	381997.32	39°32'43.6283"N	80°22'56.0235"W	6.95	179.770	0.01	-0.01	-2.08
1915.00	0.090	212.530	1914.98	-6.73	-7.19	-0.11	1751212.98	381997.09	39°32'43.6260"N	80°22'56.0252"W	7.19	180.871	0.13	-0.13	2.88
2015.00	0.120	202.480	2014.98	-6.85	-7.35	-0.19	1751212.90	381996.92	39°32'43.6243"N	80°22'56.0262"W	7.35	181.493	0.04	0.03	-10.05
2115.00	0.050	215.700	2114.98	-6.96	-7.48	-0.26	1751212.83	381996.79	39°32'43.6230"N	80°22'56.0270"W	7.48	181.968	0.07	-0.07	13.22
2215.00	0.130	245.570	2214.98	-6.99	-7.56	-0.39	1751212.70	381996.71	39°32'43.6222"N	80°22'56.0287"W	7.57	182.920	0.09	0.08	29.87
2315.00	0.030	0.230	2314.98	-6.97	-7.58	-0.49	1751212.60	381996.69	39°32'43.6220"N	80°22'56.0300"W	7.60	183.689	0.15	-0.10	114.66
2415.00	0.010	356.130	2414.98	-6.94	-7.55	-0.49	1751212.60	381996.72	39°32'43.6223"N	80°22'56.0300"W	7.56	183.710	0.02	-0.02	-4.10
2479.00	0.020	295.940	2478.98	-6.93	-7.54	-0.50	1751212.59	381996.73	39°32'43.6224"N	80°22'56.0301"W	7.55	183.794	0.03	0.02	-94.05
2547.00	0.200	229.470	2546.98	-6.96	-7.61	-0.60	1751212.49	381996.66	39°32'43.6217"N	80°22'56.0314"W	7.63	184.513	0.28	0.26	-97.75
2590.00	0.070	232.440	2589.98	-7.00	-7.68	-0.68	1751212.41	381996.60	39°32'43.6211"N	80°22'56.0324"W	7.70	185.053	0.30	-0.30	6.91
2634.00	0.700	359.580	2633.98	-6.75	-7.42	-0.70	1751212.39	381996.85	39°32'43.6236"N	80°22'56.0327"W	7.46	185.402	1.69	1.43	288.95



Actual Wellpath Report

Elliott 15H (L-003937) AWP Proj: 23959'
Page 3 of 12



REFERENCE WELLPATH IDENTIFICATION			
Operator	EQT PRODUCTION COMPANY	Well	Elliott 15H (L-003937)
Field	Marion	API	47-049-02505-00-00
Facility	Elliott Pad	Wellbore	Elliott 15H (L-003937) AWB
Slot	Slot 15		

WELLPATH DATA (259 stations)															
MD [ft]	Inclination [°]	Azimuth [°]	TVD [ft]	Vert Sect [ft]	North [ft]	East [ft]	Grid East [US ft]	Grid North [US ft]	Latitude	Longitude	Closure Dist [ft]	Closure Dir [°]	DLS [°/100ft]	Build Rate [°/100ft]	Turn Rate [°/100ft]
2677.00	2.240	3.800	2676.97	-5.73	-6.32	-0.65	1751212.44	381997.95	39°32'43.6344"N	80°22'56.0322"W	6.35	185.854	3.59	3.58	9.81
2763.00	5.940	14.960	2762.73	-0.53	-0.34	0.61	1751213.70	382003.93	39°32'43.6936"N	80°22'56.0168"W	0.70	119.263	4.38	4.30	12.98
2850.00	6.990	22.480	2849.18	7.10	8.90	3.80	1751216.89	382013.17	39°32'43.7853"N	80°22'55.9773"W	9.67	23.119	1.55	1.21	8.64
2936.00	6.470	27.580	2934.59	14.26	18.03	8.04	1751221.13	382022.30	39°32'43.8759"N	80°22'55.9243"W	19.74	24.044	0.92	-0.60	5.93
3022.00	7.850	54.250	3019.94	19.17	25.76	15.06	1751228.14	382030.03	39°32'43.9530"N	80°22'55.8357"W	29.83	30.307	4.14	1.60	31.01
3108.00	8.080	66.850	3105.11	21.16	31.56	25.38	1751238.47	382035.83	39°32'44.0114"N	80°22'55.7047"W	40.50	38.801	2.04	0.27	14.65
3195.00	8.850	63.830	3191.17	22.28	36.92	37.01	1751250.10	382041.19	39°32'44.0654"N	80°22'55.5569"W	52.27	45.068	1.02	0.89	-3.47
3281.00	10.740	61.720	3275.91	24.21	43.63	50.00	1751263.09	382047.90	39°32'44.1331"N	80°22'55.3919"W	66.36	48.891	2.24	2.20	-2.45
3367.00	12.750	59.570	3360.11	27.17	52.24	65.24	1751278.33	382056.51	39°32'44.2196"N	80°22'55.1984"W	83.58	51.317	2.39	2.34	-2.50
3454.00	14.050	59.990	3444.73	30.85	62.38	82.67	1751295.75	382066.65	39°32'44.3215"N	80°22'54.9773"W	103.56	52.961	1.50	1.49	0.48
3540.00	15.830	60.330	3527.82	34.74	73.41	101.90	1751314.98	382077.68	39°32'44.4324"N	80°22'54.7332"W	125.59	54.230	2.07	2.07	0.40
3626.00	17.760	63.710	3610.15	38.28	85.03	123.85	1751336.94	382089.29	39°32'44.5493"N	80°22'54.4544"W	150.23	55.530	2.51	2.24	3.93
3712.00	20.330	66.270	3691.44	40.83	96.85	149.30	1751362.38	382101.12	39°32'44.6686"N	80°22'54.1312"W	177.96	57.027	3.14	2.99	2.98
3799.00	22.570	67.680	3772.41	42.65	109.28	178.58	1751391.66	382113.54	39°32'44.7943"N	80°22'53.7589"W	209.36	58.537	2.64	2.57	1.62
3885.00	24.260	66.850	3851.33	44.46	122.49	210.09	1751423.17	382126.75	39°32'44.9279"N	80°22'53.3583"W	243.19	59.757	2.00	1.97	-0.97
3971.00	25.310	66.410	3929.40	46.76	136.79	243.19	1751456.26	382141.06	39°32'45.0725"N	80°22'52.9377"W	279.02	60.642	1.24	1.22	-0.51
4058.00	26.460	66.350	4007.67	49.35	152.01	277.99	1751491.06	382156.27	39°32'45.2262"N	80°22'52.4954"W	316.83	61.329	1.32	1.32	-0.07
4144.00	27.080	66.080	4084.46	52.11	167.64	313.43	1751526.50	382171.90	39°32'45.3841"N	80°22'52.0449"W	355.44	61.860	0.73	0.72	-0.31
4230.00	27.390	66.150	4160.92	54.97	183.57	349.42	1751562.49	382187.83	39°32'45.5451"N	80°22'51.5876"W	394.70	62.284	0.36	0.36	0.08
4316.00	28.440	66.980	4236.91	57.58	199.58	386.36	1751599.43	382203.84	39°32'45.7068"N	80°22'51.1180"W	434.86	62.681	1.30	1.22	0.97
4403.00	30.150	66.650	4312.79	60.17	216.34	425.49	1751638.55	382220.60	39°32'45.8763"N	80°22'50.6207"W	477.33	63.049	1.97	1.97	-0.38
4489.00	31.760	66.890	4386.53	62.88	233.78	466.14	1751679.20	382238.04	39°32'46.0526"N	80°22'50.1040"W	521.48	63.364	1.88	1.87	0.28
4575.00	32.600	67.660	4459.32	65.28	251.47	508.38	1751721.44	382255.73	39°32'46.2315"N	80°22'49.5669"W	567.18	63.680	1.09	0.98	0.90
4661.00	34.500	68.490	4530.99	67.11	269.21	552.47	1751765.53	382273.47	39°32'46.4111"N	80°22'49.0063"W	614.58	64.021	2.27	2.21	0.97
4747.00	34.540	67.880	4601.85	68.90	287.32	597.72	1751810.77	382291.58	39°32'46.5945"N	80°22'48.4311"W	663.19	64.326	0.40	0.05	-0.71
4834.00	33.870	69.190	4673.80	70.41	305.22	643.23	1751856.28	382309.48	39°32'46.7758"N	80°22'47.8524"W	711.97	64.615	1.14	-0.77	1.51
4920.00	34.880	69.950	4744.78	71.01	322.17	688.73	1751901.78	382326.42	39°32'46.9477"N	80°22'47.2737"W	760.36	64.931	1.28	1.17	0.88
4997.00	35.120	69.390	4807.86	71.49	337.51	730.15	1751943.19	382341.76	39°32'47.1033"N	80°22'46.7470"W	804.38	65.191	0.52	0.31	-0.73
5084.00	35.860	69.570	4878.69	72.20	355.22	777.45	1751990.49	382359.47	39°32'47.2829"N	80°22'46.1454"W	854.76	65.444	0.86	0.85	0.21
5170.00	34.900	68.640	4948.81	73.23	372.97	823.97	1752037.01	382377.22	39°32'47.4628"N	80°22'45.5538"W	904.45	65.646	1.28	-1.12	-1.08



Actual Wellpath Report

Elliott 15H (L-003937) AWP Proj: 23959
Page 4 of 12



REFERENCE WELLPATH IDENTIFICATION			
Operator	EQT PRODUCTION COMPANY	Well	Elliott 15H (L-003937)
Field	Marion	API	47-049-02505-00-00
Facility	Elliott Pad	Wellbore	Elliott 15H (L-003937) AWB
Slot	Slot 15		

WELLPATH DATA (259 stations)															
MD [ft]	Inclination [°]	Azimuth [°]	TVD [ft]	Vert Sect [ft]	North [ft]	East [ft]	Grid East [US ft]	Grid North [US ft]	Latitude	Longitude	Closure Dist [ft]	Closure Dir [°]	DLS [°/100ft]	Build Rate [°/100ft]	Turn Rate [°/100ft]
5256.00	34.860	67.880	5019.36	74.97	391.19	869.65	1752082.69	382395.43	39°32'47.6473"N	80°22'44.9729"W	953.58	65.781	0.51	-0.05	-0.88
5343.00	34.370	68.050	5090.96	76.98	409.73	915.46	1752128.50	382413.97	39°32'47.8349"N	80°22'44.3905"W	1002.97	65.888	0.57	-0.56	0.20
5429.00	33.570	69.090	5162.28	78.42	427.29	960.19	1752173.22	382431.53	39°32'48.0128"N	80°22'43.8218"W	1050.97	66.011	1.15	-0.93	1.21
5515.00	33.580	69.920	5233.94	79.07	443.94	1004.74	1752217.77	382448.18	39°32'48.1817"N	80°22'43.2552"W	1098.44	66.162	0.53	0.01	0.97
5601.00	34.640	68.030	5305.14	80.19	461.25	1049.74	1752262.77	382465.49	39°32'48.3571"N	80°22'42.6828"W	1146.61	66.280	1.74	1.23	-2.20
5688.00	35.800	69.020	5376.22	81.73	479.61	1096.44	1752309.46	382483.85	39°32'48.5431"N	80°22'42.0891"W	1196.75	66.374	1.49	1.33	1.14
5774.00	35.400	68.530	5446.14	83.05	497.74	1143.10	1752356.12	382501.98	39°32'48.7267"N	80°22'41.4957"W	1246.77	66.470	0.57	-0.47	-0.57
5860.00	35.700	70.320	5516.12	83.81	515.30	1189.91	1752402.93	382519.54	39°32'48.9048"N	80°22'40.9004"W	1296.70	66.584	1.26	0.35	2.08
5946.00	36.600	70.140	5585.56	83.86	532.47	1237.65	1752450.67	382536.70	39°32'49.0790"N	80°22'40.2932"W	1347.33	66.722	1.05	1.05	-0.21
6033.00	35.700	68.820	5655.81	84.58	550.45	1285.72	1752498.73	382554.68	39°32'49.2614"N	80°22'39.6819"W	1398.59	66.823	1.37	-1.03	-1.52
6119.00	33.920	70.870	5726.42	84.98	567.38	1331.79	1752544.80	382571.62	39°32'49.4332"N	80°22'39.0959"W	1447.61	66.925	2.48	-2.07	2.38
6205.00	34.130	71.660	5797.69	84.16	582.83	1377.36	1752590.37	382587.07	39°32'49.5903"N	80°22'38.5161"W	1495.60	67.064	0.57	0.24	0.92
6291.00	34.880	71.030	5868.56	83.26	598.42	1423.52	1752636.52	382602.65	39°32'49.7488"N	80°22'37.9289"W	1544.18	67.199	0.97	0.87	-0.73
6378.00	35.170	72.000	5939.81	82.20	614.25	1470.87	1752683.87	382618.48	39°32'49.9098"N	80°22'37.3264"W	1593.98	67.334	0.72	0.33	1.11
6464.00	34.170	70.880	6010.54	81.21	629.81	1517.25	1752730.25	382634.05	39°32'50.0681"N	80°22'36.7363"W	1642.77	67.457	1.38	-1.16	-1.30
6550.00	31.900	66.910	6082.64	82.30	646.64	1560.98	1752773.98	382650.87	39°32'50.2386"N	80°22'36.1802"W	1689.62	67.498	3.65	-2.64	-4.62
6636.00	30.930	68.590	6156.03	84.29	663.62	1602.46	1752815.45	382667.85	39°32'50.4104"N	80°22'35.6528"W	1734.44	67.504	1.52	-1.13	1.95
6723.00	32.570	67.320	6230.01	86.17	680.81	1644.89	1752857.88	382685.04	39°32'50.5844"N	80°22'35.1134"W	1780.21	67.516	2.04	1.89	-1.46
6809.00	31.590	66.100	6302.88	89.02	698.86	1686.84	1752899.83	382703.09	39°32'50.7669"N	80°22'34.5801"W	1825.88	67.496	1.37	-1.14	-1.42
6895.00	31.360	65.390	6376.23	92.57	717.31	1727.78	1752940.76	382721.54	39°32'50.9531"N	80°22'34.0598"W	1870.76	67.454	0.51	-0.27	-0.83
6981.00	32.600	65.620	6449.18	96.37	736.19	1769.23	1752982.21	382740.42	39°32'51.1437"N	80°22'33.5331"W	1916.28	67.407	1.45	1.44	0.27
7067.00	33.450	65.840	6521.28	100.10	755.46	1811.95	1753024.93	382759.68	39°32'51.3382"N	80°22'32.9901"W	1963.13	67.367	1.00	0.99	0.26
7154.00	33.500	70.900	6593.86	101.70	773.13	1856.53	1753069.51	382777.35	39°32'51.5172"N	80°22'32.4233"W	2011.08	67.391	3.21	0.06	5.82
7240.00	33.180	70.270	6665.71	101.46	788.84	1901.11	1753114.08	382793.06	39°32'51.6767"N	80°22'31.8562"W	2058.27	67.465	0.55	-0.37	-0.73
7326.00	32.860	71.380	6737.82	101.02	804.23	1945.37	1753158.34	382808.46	39°32'51.8331"N	80°22'31.2931"W	2105.05	67.539	0.80	-0.37	1.29
7369.00	34.510	72.640	6773.60	100.30	811.59	1968.05	1753181.02	382815.82	39°32'51.9081"N	80°22'31.0045"W	2128.83	67.589	4.17	3.84	2.93
7457.00	36.690	73.800	6845.15	97.67	826.37	2017.10	1753230.06	382830.59	39°32'52.0588"N	80°22'30.3803"W	2179.81	67.722	2.59	2.48	1.32
7553.00	37.230	85.530	6921.95	88.27	836.65	2073.66	1753286.62	382840.87	39°32'52.1658"N	80°22'29.6595"W	2236.08	68.028	7.36	0.56	12.22
7648.00	39.520	91.330	6996.45	69.85	838.19	2132.56	1753345.52	382842.40	39°32'52.1867"N	80°22'28.9079"W	2291.36	68.543	4.49	2.41	6.11
7743.00	35.650	84.930	7071.75	51.99	839.93	2190.40	1753403.35	382844.15	39°32'52.2095"N	80°22'28.1698"W	2345.91	69.020	5.78	-4.07	-6.74



Actual Wellpath Report

Elliott 15H (L-003937) AWP Proj: 23959
Page 5 of 12



REFERENCE WELLPATH IDENTIFICATION				
Operator	EQT PRODUCTION COMPANY		Well	Elliott 15H (L-003937)
Field	Marion		API	47-049-02505-00-00
Facility	Elliott Pad		Wellbore	Elliott 15H (L-003937) AWB
Slot	Slot 15			

WELLPATH DATA (259 stations)															
MD [ft]	Inclination [°]	Azimuth [°]	TVD [ft]	Vert Sect [ft]	North [ft]	East [ft]	Grid East [US ft]	Grid North [US ft]	Latitude	Longitude	Closure Dist [ft]	Closure Dir [°]	DLS [°/100ft]	Build Rate [°/100ft]	Turn Rate [°/100ft]
7934.00	32.770	60.610	7230.43	46.59	870.37	2291.37	1753504.32	382874.58	39°32'52.5200"N	80°22'26.8847"W	2451.11	69.201	7.27	-1.51	-12.73
8029.00	33.070	47.100	7310.28	61.14	900.67	2332.82	1753545.77	382904.89	39°32'52.8235"N	80°22'26.3594"W	2500.65	68.889	7.72	0.32	-14.22
8124.00	36.990	33.370	7388.18	88.56	942.26	2367.59	1753580.54	382946.48	39°32'53.2379"N	80°22'25.9207"W	2548.20	68.298	9.24	4.13	-14.45
8220.00	43.000	23.380	7461.77	129.90	996.54	2396.52	1753609.47	383000.75	39°32'53.7770"N	80°22'25.5581"W	2595.46	67.421	9.15	6.26	-10.41
8315.00	43.800	11.330	7530.92	181.82	1058.62	2415.87	1753628.82	383062.82	39°32'54.3924"N	80°22'25.3188"W	2637.63	66.337	8.75	0.84	-12.68
8410.00	47.830	359.760	7597.23	243.31	1126.20	2422.20	1753635.14	383130.40	39°32'55.0610"N	80°22'25.2464"W	2671.21	65.064	9.70	4.24	-12.18
8505.00	52.920	355.140	7657.82	313.20	1199.24	2418.84	1753631.78	383203.44	39°32'55.7824"N	80°22'25.2984"W	2699.80	63.628	6.54	5.36	-4.86
8601.00	59.650	351.900	7711.08	390.89	1278.51	2409.74	1753622.69	383282.70	39°32'56.5650"N	80°22'25.4243"W	2727.90	62.051	7.55	7.01	-3.38
8696.00	65.750	344.950	7754.68	474.37	1361.07	2392.69	1753605.63	383365.26	39°32'57.3793"N	80°22'25.6523"W	2752.72	60.367	9.13	6.42	-7.32
8790.00	71.310	341.380	7789.08	561.69	1444.73	2367.32	1753580.27	383448.92	39°32'58.2037"N	80°22'25.9865"W	2773.35	58.605	6.89	5.91	-3.80
8885.00	75.080	339.040	7816.54	652.61	1530.28	2336.52	1753549.47	383534.45	39°32'59.0461"N	80°22'26.3903"W	2793.04	56.778	4.62	3.97	-2.46
8980.00	82.530	338.510	7834.97	745.70	1617.08	2302.80	1753515.75	383621.26	39°32'59.9008"N	80°22'26.8315"W	2813.87	54.922	7.86	7.84	-0.56
9075.00	88.240	333.970	7842.62	840.09	1703.69	2264.66	1753477.61	383707.85	39°33'0.7530"N	80°22'27.3292"W	2833.94	53.046	7.67	6.01	-4.78
9170.00	88.950	328.360	7844.95	933.82	1786.85	2218.87	1753431.83	383791.01	39°33'1.5704"N	80°22'27.9240"W	2848.90	51.156	5.95	0.75	-5.91
9265.00	89.290	327.950	7846.41	1026.69	1867.54	2168.76	1753381.71	383871.70	39°33'2.3631"N	80°22'28.5738"W	2862.03	49.268	0.56	0.36	-0.43
9361.00	88.950	328.010	7847.88	1120.47	1948.92	2117.86	1753330.82	383953.08	39°33'3.1625"N	80°22'29.2336"W	2878.13	47.379	0.36	-0.35	0.06
9456.00	89.170	327.040	7849.44	1213.11	2029.06	2066.86	1753279.83	384033.20	39°33'3.9495"N	80°22'29.8946"W	2896.37	45.529	1.05	0.23	-1.02
9551.00	89.140	330.860	7850.84	1306.23	2110.42	2017.87	1753230.84	384114.56	39°33'4.7489"N	80°22'30.5300"W	2919.88	43.716	4.02	-0.03	4.02
9647.00	90.280	331.640	7851.33	1401.03	2194.58	1971.70	1753184.67	384198.72	39°33'5.5762"N	80°22'31.1299"W	2950.22	41.938	1.44	1.19	0.81
9742.00	90.370	330.740	7850.79	1494.83	2277.82	1925.92	1753138.90	384281.95	39°33'6.3944"N	80°22'31.7247"W	2982.89	40.215	0.95	0.09	-0.95
9837.00	88.830	327.020	7851.45	1587.93	2359.13	1876.83	1753089.81	384363.26	39°33'7.1933"N	80°22'32.3614"W	3014.63	38.504	4.24	-1.62	-3.92
9932.00	89.910	331.120	7852.50	1681.09	2440.60	1828.02	1753041.00	384444.72	39°33'7.9937"N	80°22'32.9947"W	3049.29	36.833	4.46	1.14	4.32
10027.00	89.320	329.050	7853.14	1774.58	2522.93	1780.65	1752993.63	384527.05	39°33'8.8029"N	80°22'33.6097"W	3088.02	35.214	2.27	-0.62	-2.18
10122.00	90.090	331.270	7853.63	1868.09	2605.33	1733.38	1752946.36	384609.45	39°33'9.6126"N	80°22'34.2234"W	3129.28	33.637	2.47	0.81	2.34
10217.00	89.820	330.690	7853.70	1961.84	2688.40	1687.29	1752900.28	384692.51	39°33'10.4292"N	80°22'34.8220"W	3174.03	32.113	0.67	-0.28	-0.61
10312.00	89.820	330.730	7854.00	2055.51	2771.26	1640.82	1752853.81	384775.36	39°33'11.2435"N	80°22'35.4257"W	3220.58	30.629	0.04	0.00	0.04
10407.00	89.290	330.070	7854.74	2149.10	2853.86	1593.89	1752806.89	384857.96	39°33'12.0553"N	80°22'36.0350"W	3268.79	29.184	0.89	-0.56	-0.69
10503.00	89.380	331.070	7855.85	2243.71	2937.46	1546.73	1752759.72	384941.56	39°33'12.8770"N	80°22'36.6475"W	3319.80	27.769	1.05	0.09	1.04
10598.00	89.540	329.510	7856.75	2337.26	3019.97	1499.65	1752712.65	385024.06	39°33'13.6878"N	80°22'37.2588"W	3371.82	26.408	1.65	0.17	-1.64
10693.00	90.400	332.300	7856.80	2430.98	3102.97	1453.46	1752666.46	385107.06	39°33'14.5037"N	80°22'37.8588"W	3426.51	25.099	3.07	0.91	2.94



Actual Wellpath Report

Elliott 15H (L-003937) AWP Proj: 23959
Page 6 of 12



REFERENCE WELLPATH IDENTIFICATION			
Operator	EQT PRODUCTION COMPANY	Well	Elliott 15H (L-003937)
Field	Marion	API	47-049-02505-00-00
Facility	Elliott Pad	Wellbore	Elliott 15H (L-003937) AWB
Slot	Slot 15		

WELLPATH DATA (259 stations)															
MD [ft]	Inclination [°]	Azimuth [°]	TVD [ft]	Vert Sect [ft]	North [ft]	East [ft]	Grid East [US ft]	Grid North [US ft]	Latitude	Longitude	Closure Dist [ft]	Closure Dir [°]	DLS [°/100ft]	Build Rate [°/100ft]	Turn Rate [°/100ft]
10789.00	89.750	330.300	7856.67	2525.80	3187.17	1407.36	1752620.37	385191.25	39°33'15.3314"N	80°22'38.4578"W	3484.07	23.825	2.19	-0.68	-2.08
10884.00	88.490	328.550	7858.13	2619.08	3268.95	1359.05	1752572.05	385273.02	39°33'16.1349"N	80°22'39.0848"W	3540.20	22.575	2.27	-1.33	-1.84
10979.00	89.540	330.840	7859.76	2712.44	3350.95	1311.12	1752524.13	385355.02	39°33'16.9407"N	80°22'39.7069"W	3598.32	21.369	2.65	1.11	2.41
11074.00	89.350	331.060	7860.68	2806.17	3434.00	1264.99	1752478.01	385438.06	39°33'17.7569"N	80°22'40.3061"W	3659.58	20.222	0.31	-0.20	0.23
11169.00	88.950	329.040	7862.09	2899.64	3516.30	1217.57	1752430.59	385520.35	39°33'18.5657"N	80°22'40.9217"W	3721.13	19.099	2.17	-0.42	-2.13
11264.00	89.880	330.920	7863.06	2993.10	3598.54	1170.05	1752383.07	385602.60	39°33'19.3740"N	80°22'41.5387"W	3783.98	18.012	2.21	0.98	1.98
11359.00	88.980	330.230	7864.01	3086.73	3681.28	1123.38	1752336.40	385685.33	39°33'20.1871"N	80°22'42.1448"W	3848.87	16.970	1.19	-0.95	-0.73
11454.00	89.750	328.730	7865.06	3180.04	3763.11	1075.14	1752288.16	385767.16	39°33'20.9912"N	80°22'42.7709"W	3913.69	15.945	1.77	0.81	-1.58
11549.00	90.430	330.010	7864.91	3273.31	3844.85	1026.74	1752239.77	385848.89	39°33'21.7944"N	80°22'43.3990"W	3979.59	14.952	1.53	0.72	1.35
11645.00	90.220	330.590	7864.37	3367.86	3928.24	979.18	1752192.21	385932.27	39°33'22.6139"N	80°22'44.0166"W	4048.44	13.997	0.64	-0.22	0.60
11739.00	88.920	325.820	7865.07	3459.74	4008.11	929.67	1752142.70	386012.14	39°33'23.3984"N	80°22'44.6586"W	4114.51	13.059	5.26	-1.38	-5.07
11834.00	89.450	330.390	7866.42	3552.57	4088.74	879.49	1752092.53	386092.76	39°33'24.1903"N	80°22'45.3093"W	4182.26	12.139	4.84	0.56	4.81
11930.00	90.220	329.510	7866.70	3647.01	4171.83	831.42	1752044.46	386175.85	39°33'25.0069"N	80°22'45.9334"W	4253.87	11.271	1.22	0.80	-0.92
12024.00	89.570	331.170	7866.87	3739.59	4253.51	784.90	1751997.95	386257.52	39°33'25.8096"N	80°22'46.5374"W	4325.32	10.455	1.90	-0.69	1.77
12120.00	90.620	329.800	7866.71	3834.18	4337.05	737.61	1751950.66	386341.06	39°33'26.6307"N	80°22'47.1516"W	4399.33	9.652	1.80	1.09	-1.43
12215.00	88.950	328.470	7867.07	3927.38	4418.59	688.88	1751901.93	386422.59	39°33'27.4318"N	80°22'47.7840"W	4471.97	8.861	2.25	-1.76	-1.40
12310.00	89.630	329.360	7868.25	4020.51	4499.94	639.83	1751852.89	386503.94	39°33'28.2310"N	80°22'48.4203"W	4545.20	8.092	1.18	0.72	0.94
12405.00	89.780	329.090	7868.74	4113.74	4581.56	591.23	1751804.28	386585.56	39°33'29.0329"N	80°22'49.0511"W	4619.55	7.353	0.33	0.16	-0.28
12500.00	90.280	329.120	7868.69	4206.93	4663.08	542.45	1751755.50	386667.07	39°33'29.8339"N	80°22'49.6840"W	4694.53	6.635	0.53	0.53	0.03
12596.00	90.030	329.650	7868.43	4301.20	4745.70	493.56	1751706.62	386749.68	39°33'30.6456"N	80°22'50.3185"W	4771.30	5.937	0.61	-0.26	0.55
12691.00	89.850	329.570	7868.53	4394.55	4827.65	445.50	1751658.56	386831.63	39°33'31.4508"N	80°22'50.9423"W	4848.16	5.272	0.21	-0.19	-0.08
12786.00	90.150	329.300	7868.53	4487.85	4909.45	397.19	1751610.26	386913.42	39°33'32.2546"N	80°22'51.5693"W	4925.49	4.625	0.42	0.32	-0.28
12881.00	90.650	329.210	7867.86	4581.10	4991.09	348.63	1751561.69	386995.06	39°33'33.0567"N	80°22'52.1996"W	5003.25	3.996	0.53	0.53	-0.09
12976.00	89.140	327.900	7868.04	4674.11	5072.14	299.07	1751512.14	387076.10	39°33'33.8529"N	80°22'52.8424"W	5080.95	3.374	2.10	-1.59	-1.38
13071.00	89.510	328.110	7869.16	4766.92	5152.70	248.74	1751461.81	387156.66	39°33'34.6442"N	80°22'53.4951"W	5158.70	2.764	0.45	0.39	0.22
13166.00	89.820	328.210	7869.71	4859.80	5233.40	198.62	1751411.70	387237.36	39°33'35.4369"N	80°22'54.1450"W	5237.17	2.173	0.34	0.33	0.11
13261.00	90.340	332.700	7869.58	4953.38	5316.03	151.79	1751364.87	387319.98	39°33'36.2489"N	80°22'54.7533"W	5318.20	1.636	4.76	0.55	4.73
13356.00	89.230	325.390	7869.94	5046.49	5397.44	102.96	1751316.04	387401.39	39°33'37.0488"N	80°22'55.3870"W	5398.42	1.093	7.78	-1.17	-7.69
13451.00	89.970	331.040	7870.60	5139.35	5478.16	52.94	1751266.03	387482.10	39°33'37.8416"N	80°22'56.0357"W	5478.41	0.554	6.00	0.78	5.95
13547.00	90.180	331.210	7870.47	5234.12	5562.22	6.58	1751219.67	387566.16	39°33'38.6679"N	80°22'56.6381"W	5562.23	0.068	0.28	0.22	0.18



Actual Wellpath Report

Elliott 15H (L-003937) AWP Proj: 23959'
Page 7 of 12



REFERENCE WELLPATH IDENTIFICATION				
Operator	EQT PRODUCTION COMPANY		Well	Elliott 15H (L-003937)
Field	Marion		API	47-049-02505-00-00
Facility	Elliott Pad		Wellbore	Elliott 15H (L-003937) AWB
Slot	Slot 15			

WELLPATH DATA (259 stations)															
MD [ft]	Inclination [°]	Azimuth [°]	TVD [ft]	Vert Sect [ft]	North [ft]	East [ft]	Grid East [US ft]	Grid North [US ft]	Latitude	Longitude	Closure Dist [ft]	Closure Dir [°]	DLS [°/100ft]	Build Rate [°/100ft]	Turn Rate [°/100ft]
13641.00	89.660	329.400	7870.61	5326.69	5643.88	-39.98	1751173.11	387647.81	39°33'39.4704"N	80°22'57.2428"W	5644.02	359.594	2.00	-0.55	-1.93
13736.00	90.000	326.330	7870.89	5419.46	5724.31	-90.51	1751122.59	387728.24	39°33'40.2604"N	80°22'57.8980"W	5725.03	359.094	3.25	0.36	-3.23
13831.00	89.690	326.790	7871.14	5511.74	5803.58	-142.86	1751070.24	387807.50	39°33'41.0387"N	80°22'58.5763"W	5805.34	358.590	0.58	-0.33	0.48
13926.00	89.410	327.040	7871.89	5604.16	5883.18	-194.72	1751018.39	387887.09	39°33'41.8203"N	80°22'59.2484"W	5886.40	358.104	0.40	-0.29	0.26
14022.00	90.920	331.560	7871.61	5698.37	5965.70	-243.71	1750969.39	387969.61	39°33'42.6311"N	80°22'59.8843"W	5970.68	357.661	4.96	1.57	4.71
14117.00	89.410	327.870	7871.34	5791.74	6047.72	-291.61	1750921.49	388051.62	39°33'43.4370"N	80°23'0.5061"W	6054.75	357.239	4.20	-1.59	-3.88
14211.00	91.170	332.080	7870.86	5884.20	6129.08	-338.64	1750874.48	388132.98	39°33'44.2365"N	80°23'1.1167"W	6138.43	356.838	4.85	1.87	4.48
14306.00	90.030	330.730	7869.87	5978.05	6212.49	-384.10	1750829.01	388216.38	39°33'45.0564"N	80°23'1.7077"W	6224.35	356.462	1.86	-1.20	-1.42
14400.00	89.820	328.100	7869.99	6070.35	6293.40	-431.92	1750781.19	388297.29	39°33'45.8514"N	80°23'2.3284"W	6308.21	356.074	2.81	-0.22	-2.80
14495.00	90.650	331.280	7869.60	6163.72	6375.40	-479.86	1750733.26	388379.29	39°33'46.6571"N	80°23'2.9508"W	6393.44	355.696	3.46	0.87	3.35
14590.00	88.980	330.110	7869.91	6257.38	6458.24	-526.36	1750686.76	388462.12	39°33'47.4713"N	80°23'3.5548"W	6479.66	355.341	2.15	-1.76	-1.23
14685.00	89.910	329.840	7870.83	6350.84	6540.49	-573.89	1750639.23	388544.36	39°33'48.2795"N	80°23'4.1721"W	6565.62	354.985	1.02	0.98	-0.28
14780.00	90.090	332.250	7870.83	6444.60	6623.61	-619.88	1750593.25	388627.48	39°33'49.0965"N	80°23'4.7697"W	6652.55	354.653	2.54	0.19	2.54
14875.00	89.350	329.570	7871.29	6538.32	6706.61	-666.06	1750547.07	388710.48	39°33'49.9123"N	80°23'5.3698"W	6739.61	354.328	2.93	-0.78	-2.82
14971.00	90.770	332.430	7871.19	6633.05	6790.57	-712.60	1750500.54	388794.43	39°33'50.7375"N	80°23'5.9745"W	6827.85	354.009	3.33	1.48	2.98
15066.00	89.750	330.570	7870.76	6726.93	6874.05	-757.92	1750455.21	388877.90	39°33'51.5581"N	80°23'6.5637"W	6915.71	353.708	2.23	-1.07	-1.96
15161.00	91.020	332.370	7870.12	6820.80	6957.51	-803.29	1750409.84	388961.36	39°33'52.3784"N	80°23'7.1535"W	7003.73	353.414	2.32	1.34	1.89
15256.00	89.350	327.610	7869.82	6914.23	7039.74	-850.79	1750362.35	389043.59	39°33'53.1865"N	80°23'7.7703"W	7090.97	353.109	5.31	-1.76	-5.01
15351.00	89.260	328.990	7870.97	7007.15	7120.56	-900.71	1750312.44	389124.40	39°33'53.9804"N	80°23'8.4178"W	7177.30	352.791	1.46	-0.09	1.45
15446.00	90.950	333.800	7870.80	7100.98	7203.94	-946.18	1750266.97	389207.77	39°33'54.8000"N	80°23'9.0088"W	7265.81	352.518	5.37	1.78	5.06
15541.00	89.410	327.420	7870.50	7194.57	7286.67	-992.77	1750220.38	389290.50	39°33'55.6130"N	80°23'9.6142"W	7353.99	352.242	6.91	-1.62	-6.72
15636.00	90.860	331.560	7870.27	7287.87	7368.49	-1040.99	1750172.16	389372.32	39°33'56.4170"N	80°23'10.2402"W	7441.66	351.959	4.62	1.53	4.36
15827.00	91.320	331.500	7866.64	7476.61	7536.36	-1132.02	1750081.14	389540.18	39°33'58.0671"N	80°23'11.4236"W	7620.91	351.458	0.24	0.24	-0.03
15922.00	90.060	329.820	7865.50	7570.26	7619.17	-1178.57	1750034.59	389622.98	39°33'58.8809"N	80°23'12.0283"W	7709.78	351.207	2.21	-1.33	-1.77
16017.00	90.620	330.750	7864.93	7663.81	7701.67	-1225.65	1749987.51	389705.48	39°33'59.6917"N	80°23'12.6400"W	7798.59	350.958	1.14	0.59	0.98
16112.00	89.690	330.330	7864.67	7757.43	7784.39	-1272.38	1749940.79	389788.19	39°34'0.5046"N	80°23'13.2470"W	7887.69	350.717	1.07	-0.98	-0.44
16207.00	88.710	329.940	7866.00	7850.94	7866.76	-1319.68	1749893.49	389870.56	39°34'1.3141"N	80°23'13.8613"W	7976.68	350.477	1.11	-1.03	-0.41
16302.00	90.150	332.860	7866.95	7944.78	7950.15	-1365.14	1749848.03	389953.95	39°34'2.1338"N	80°23'14.4524"W	8066.51	350.257	3.43	1.52	3.07
16397.00	90.800	331.950	7866.16	8038.87	8034.34	-1409.15	1749804.03	390038.13	39°34'2.9615"N	80°23'15.0249"W	8156.98	350.052	1.18	0.68	-0.96
16492.00	90.150	329.950	7865.37	8132.61	8117.38	-1455.27	1749757.90	390121.17	39°34'3.7777"N	80°23'15.6243"W	8246.80	349.836	2.21	-0.68	-2.11



Actual Wellpath Report

Elliott 15H (L-003937) AWP Proj: 23959'
Page 8 of 12



REFERENCE WELLPATH IDENTIFICATION			
Operator	EQT PRODUCTION COMPANY	Well	Elliott 15H (L-003937)
Field	Marion	API	47-049-02505-00-00
Facility	Elliott Pad	Wellbore	Elliott 15H (L-003937) AWB
Slot	Slot 15		

WELLPATH DATA (259 stations)															
MD [ft]	Inclination [°]	Azimuth [°]	TVD [ft]	Vert Sect [ft]	North [ft]	East [ft]	Grid East [US ft]	Grid North [US ft]	Latitude	Longitude	Closure Dist [ft]	Closure Dir [°]	DLS [°/100ft]	Build Rate [°/100ft]	Turn Rate [°/100ft]
16587.00	90.310	329.650	7864.99	8226.02	8199.49	-1503.06	1749710.12	390203.27	39°34'4.5844"N	80°23'16.2448"W	8336.12	349.612	0.36	0.17	-0.32
16682.00	90.120	329.240	7864.63	8319.32	8281.30	-1551.35	1749661.83	390285.07	39°34'5.3882"N	80°23'16.8718"W	8425.35	349.390	0.48	-0.20	-0.43
16777.00	89.970	330.840	7864.56	8412.80	8363.60	-1598.79	1749614.39	390367.37	39°34'6.1969"N	80°23'17.4879"W	8515.04	349.178	1.69	-0.16	1.68
16872.00	89.820	329.460	7864.73	8506.31	8445.99	-1646.08	1749567.11	390449.76	39°34'7.0066"N	80°23'18.1021"W	8604.91	348.972	1.46	-0.16	-1.45
16967.00	90.030	329.360	7864.86	8599.61	8527.77	-1694.42	1749518.77	390531.53	39°34'7.8101"N	80°23'18.7297"W	8694.48	348.762	0.24	0.22	-0.11
17062.00	89.480	329.230	7865.26	8692.86	8609.45	-1742.93	1749470.26	390613.21	39°34'8.6126"N	80°23'19.3594"W	8784.11	348.555	0.59	-0.58	-0.14
17157.00	90.740	331.410	7865.08	8786.42	8691.98	-1789.97	1749423.23	390695.73	39°34'9.4236"N	80°23'19.9704"W	8874.38	348.364	2.65	1.33	2.29
17252.00	90.430	330.500	7864.11	8880.15	8775.03	-1836.09	1749377.11	390778.77	39°34'10.2398"N	80°23'20.5698"W	8965.06	348.182	1.01	-0.33	-0.96
17347.00	89.660	329.180	7864.04	8973.58	8857.17	-1883.81	1749329.39	390860.90	39°34'11.0469"N	80°23'21.1896"W	9055.28	347.993	1.61	-0.81	-1.39
17442.00	90.030	331.370	7864.29	9067.12	8939.66	-1930.92	1749282.29	390943.39	39°34'11.8576"N	80°23'21.8015"W	9145.82	347.812	2.34	0.39	2.31
17537.00	90.030	330.290	7864.24	9160.83	9022.61	-1977.22	1749235.99	391026.34	39°34'12.6728"N	80°23'22.4032"W	9236.72	347.640	1.14	0.00	-1.14
17633.00	90.310	330.100	7863.96	9255.34	9105.91	-2024.93	1749188.28	391109.63	39°34'13.4914"N	80°23'23.0230"W	9328.35	347.463	0.35	0.29	-0.20
17728.00	89.940	328.340	7863.75	9348.57	9187.53	-2073.55	1749139.67	391191.24	39°34'14.2932"N	80°23'23.6541"W	9418.61	347.282	1.89	-0.39	-1.85
17823.00	90.030	328.520	7863.78	9441.54	9268.47	-2123.28	1749089.93	391272.18	39°34'15.0882"N	80°23'24.2994"W	9508.57	347.097	0.21	0.09	0.19
17918.00	90.650	329.960	7863.21	9534.78	9350.10	-2171.87	1749041.35	391353.81	39°34'15.8902"N	80°23'24.9301"W	9599.03	346.923	1.65	0.65	1.52
18012.00	89.940	328.060	7862.73	9626.95	9430.68	-2220.27	1748992.96	391434.38	39°34'16.6818"N	80°23'25.5583"W	9688.51	346.752	2.16	-0.76	-2.02
18107.00	90.150	330.150	7862.65	9720.15	9512.19	-2269.04	1748944.18	391515.89	39°34'17.4826"N	80°23'26.1915"W	9779.08	346.583	2.21	0.22	2.20
18202.00	90.120	328.390	7862.43	9813.39	9593.85	-2317.58	1748895.65	391597.54	39°34'18.2849"N	80°23'26.8217"W	9869.81	346.419	1.85	-0.03	-1.85
18297.00	90.400	330.040	7862.00	9906.62	9675.46	-2366.20	1748847.03	391679.15	39°34'19.0866"N	80°23'27.4528"W	9960.59	346.258	1.76	0.29	1.74
18392.00	90.340	331.150	7861.39	10000.26	9758.22	-2412.85	1748800.39	391761.90	39°34'19.8999"N	80°23'28.0589"W	10052.10	346.111	1.17	-0.06	1.17
18487.00	90.090	334.200	7861.03	10094.41	9842.61	-2456.45	1748756.79	391846.28	39°34'20.7297"N	80°23'28.6264"W	10144.51	345.987	3.22	-0.26	3.21
18582.00	89.910	331.470	7861.03	10188.59	9927.12	-2499.82	1748713.42	391930.79	39°34'21.5606"N	80°23'29.1909"W	10237.03	345.866	2.88	-0.19	-2.87
18677.00	90.770	329.700	7860.46	10282.23	10009.87	-2546.47	1748666.77	392013.53	39°34'22.3738"N	80°23'29.7971"W	10328.70	345.727	2.07	0.91	-1.86
18772.00	90.400	328.490	7859.49	10375.41	10091.37	-2595.26	1748617.98	392095.04	39°34'23.1745"N	80°23'30.4305"W	10419.75	345.577	1.33	-0.39	-1.27
18867.00	90.370	328.900	7858.86	10468.47	10172.54	-2644.62	1748568.63	392176.20	39°34'23.9719"N	80°23'31.0711"W	10510.69	345.427	0.43	-0.03	0.43
18962.00	90.250	328.960	7858.34	10561.61	10253.91	-2693.65	1748519.60	392257.56	39°34'24.7712"N	80°23'31.7074"W	10601.81	345.281	0.14	-0.13	0.06
19057.00	89.780	328.270	7858.32	10654.64	10335.01	-2743.12	1748470.13	392338.66	39°34'25.5678"N	80°23'32.3495"W	10692.86	345.135	0.88	-0.49	-0.73
19152.00	90.220	328.030	7858.32	10747.52	10415.71	-2793.25	1748420.00	392419.35	39°34'26.3604"N	80°23'32.9999"W	10783.75	344.988	0.53	0.46	-0.25
19247.00	90.030	327.630	7858.11	10840.28	10496.12	-2843.84	1748369.43	392499.76	39°34'27.1502"N	80°23'33.6560"W	10874.55	344.840	0.47	-0.20	-0.42
19342.00	90.770	328.360	7857.45	10933.10	10576.68	-2894.18	1748319.08	392580.31	39°34'27.9413"N	80°23'34.3091"W	10965.51	344.696	1.09	0.78	0.77



Actual Wellpath Report

Elliott 15H (L-003937) AWP Proj: 23959'

Page 9 of 12



REFERENCE WELLPATH IDENTIFICATION				
Operator	EQT PRODUCTION COMPANY		Well	Elliott 15H (L-003937)
Field	Marion		API	47-049-02505-00-00
Facility	Elliott Pad		Wellbore	Elliott 15H (L-003937) AWB
Slot	Slot 15			

WELLPATH DATA (259 stations)

MD [ft]	Inclination [°]	Azimuth [°]	TVD [ft]	Vert Sect [ft]	North [ft]	East [ft]	Grid East [US ft]	Grid North [US ft]	Latitude	Longitude	Closure Dist [ft]	Closure Dir [°]	DLS [°/100ft]	Build Rate [°/100ft]	Turn Rate [°/100ft]
19437.00	89.540	326.110	7857.19	11025.64	10656.56	-2945.59	1748267.68	392660.18	39°34'28.7257"N	80°23'34.9758"W	11056.16	344.549	2.70	-1.29	-2.37
19532.00	90.090	327.980	7857.50	11118.10	10736.27	-2997.27	1748216.00	392739.89	39°34'29.5084"N	80°23'35.6458"W	11146.79	344.402	2.05	0.58	1.97
19627.00	90.430	328.010	7857.07	11210.92	10816.82	-3047.62	1748165.66	392820.44	39°34'30.2996"N	80°23'36.2989"W	11237.96	344.265	0.36	0.36	0.03
19723.00	89.880	326.800	7856.81	11304.50	10897.70	-3099.33	1748113.95	392901.32	39°34'31.0938"N	80°23'36.9696"W	11329.86	344.124	1.38	-0.57	-1.26
19818.00	89.690	327.190	7857.16	11396.96	10977.37	-3151.08	1748062.20	392980.98	39°34'31.8761"N	80°23'37.6405"W	11420.68	343.984	0.46	-0.20	0.41
19913.00	89.850	328.930	7857.54	11489.80	11057.98	-3201.33	1748011.95	393061.59	39°34'32.6678"N	80°23'38.2925"W	11512.06	343.854	1.84	0.17	1.83
20008.00	90.590	330.550	7857.18	11583.19	11140.04	-3249.20	1747964.08	393143.64	39°34'33.4740"N	80°23'38.9143"W	11604.21	343.740	1.87	0.78	1.71
20103.00	89.570	329.910	7857.05	11676.72	11222.50	-3296.37	1747916.92	393226.09	39°34'34.2843"N	80°23'39.5271"W	11696.60	343.631	1.27	-1.07	-0.67
20198.00	89.780	329.000	7857.59	11770.03	11304.31	-3344.65	1747868.64	393307.90	39°34'35.0881"N	80°23'40.1540"W	11788.73	343.518	0.98	0.22	-0.96
20293.00	89.380	329.780	7858.28	11863.31	11386.07	-3393.02	1747820.27	393389.66	39°34'35.8913"N	80°23'40.7821"W	11880.88	343.406	0.92	-0.42	0.82
20389.00	89.880	330.750	7858.90	11957.84	11469.43	-3440.64	1747772.66	393473.01	39°34'36.7104"N	80°23'41.4008"W	11974.38	343.302	1.14	0.52	1.01
20484.00	89.380	331.080	7859.52	12051.57	11552.45	-3486.81	1747726.49	393556.02	39°34'37.5263"N	80°23'42.0010"W	12067.18	343.205	0.63	-0.53	0.35
20579.00	90.310	331.640	7859.77	12145.42	11635.82	-3532.35	1747680.96	393639.39	39°34'38.3458"N	80°23'42.5931"W	12160.17	343.113	1.14	0.98	0.59
20674.00	90.000	331.330	7859.52	12239.30	11719.30	-3577.70	1747635.61	393722.86	39°34'39.1663"N	80°23'43.1829"W	12253.24	343.023	0.46	-0.33	-0.33
20770.00	89.850	331.170	7859.64	12334.10	11803.46	-3623.87	1747589.43	393807.02	39°34'39.9936"N	80°23'43.7833"W	12347.23	342.933	0.23	-0.16	-0.17
20865.00	90.000	331.260	7859.77	12427.91	11886.72	-3669.62	1747543.69	393890.28	39°34'40.8119"N	80°23'44.3780"W	12440.27	342.844	0.18	0.16	0.09
20960.00	89.910	331.390	7859.84	12521.75	11970.07	-3715.20	1747498.11	393973.62	39°34'41.6311"N	80°23'44.9708"W	12533.37	342.757	0.17	-0.09	0.14
21055.00	89.850	331.330	7860.04	12615.60	12053.45	-3760.74	1747452.58	394056.99	39°34'42.4506"N	80°23'45.5629"W	12626.51	342.672	0.09	-0.06	-0.06
21150.00	89.720	331.160	7860.40	12709.42	12136.73	-3806.44	1747406.88	394140.27	39°34'43.2692"N	80°23'46.1571"W	12719.64	342.587	0.23	-0.14	-0.18
21245.00	89.720	331.770	7860.86	12803.29	12220.19	-3851.82	1747361.50	394223.72	39°34'44.0895"N	80°23'46.7473"W	12812.87	342.505	0.64	0.00	0.64
21340.00	90.090	331.400	7861.02	12897.20	12303.75	-3897.02	1747316.30	394307.27	39°34'44.9108"N	80°23'47.3353"W	12906.16	342.425	0.55	0.39	-0.39
21436.00	90.280	332.230	7860.71	12992.15	12388.36	-3942.37	1747270.96	394391.88	39°34'45.7426"N	80°23'47.9251"W	13000.53	342.347	0.89	0.20	0.86
21530.00	89.720	331.430	7860.71	13085.13	12471.23	-3986.74	1747226.59	394474.74	39°34'46.5571"N	80°23'48.5024"W	13092.96	342.272	1.04	-0.60	-0.85
21625.00	89.570	331.420	7861.30	13178.99	12554.65	-4032.18	1747181.15	394558.17	39°34'47.3771"N	80°23'49.0933"W	13186.27	342.195	0.16	-0.16	-0.01
21721.00	89.850	331.660	7861.78	13273.87	12639.05	-4077.93	1747135.41	394642.56	39°34'48.2067"N	80°23'49.6883"W	13280.63	342.118	0.38	0.29	0.25
21816.00	89.420	329.340	7862.39	13367.48	12721.73	-4124.70	1747088.63	394725.23	39°34'49.0191"N	80°23'50.2962"W	13373.69	342.036	2.48	-0.45	-2.44
21911.00	89.940	329.560	7862.92	13460.78	12803.54	-4172.99	1747040.35	394807.04	39°34'49.8229"N	80°23'50.9233"W	13466.42	341.948	0.59	0.55	0.23
22006.00	89.750	329.620	7863.17	13554.13	12885.47	-4221.08	1746992.27	394888.96	39°34'50.6278"N	80°23'51.5479"W	13559.23	341.862	0.21	-0.20	0.06
22102.00	89.880	330.030	7863.48	13648.53	12968.46	-4269.33	1746944.02	394971.95	39°34'51.4432"N	80°23'52.1747"W	13653.14	341.778	0.45	0.14	0.43
22197.00	89.720	330.050	7863.82	13742.01	13050.76	-4316.77	1746896.58	395054.25	39°34'52.2520"N	80°23'52.7911"W	13746.16	341.697	0.17	-0.17	0.02



Actual Wellpath Report

Elliott 15H (L-003937) AWP Proj: 23959'
Page 10 of 12



REFERENCE WELLPATH IDENTIFICATION			
Operator	EQT PRODUCTION COMPANY	Well	Elliott 15H (L-003937)
Field	Marion	API	47-049-02505-00-00
Facility	Elliott Pad	Wellbore	Elliott 15H (L-003937) AWB
Slot	Slot 15		

WELLPATH DATA (259 stations) † = interpolated, ‡ = extrapolated station															
MD [ft]	Inclination [°]	Azimuth [°]	TVD [ft]	Vert Sect [ft]	North [ft]	East [ft]	Grid East [US ft]	Grid North [US ft]	Latitude	Longitude	Closure Dist [ft]	Closure Dir [°]	DLS [°/100ft]	Build Rate [°/100ft]	Turn Rate [°/100ft]
22292.00	89.720	328.920	7864.28	13835.33	13132.60	-4365.01	1746848.34	395136.08	39°34'53.0560"N	80°23'53.4176"W	13839.02	341.614	1.19	0.00	-1.19
22388.00	89.720	329.350	7864.75	13929.51	13215.01	-4414.26	1746799.10	395218.48	39°34'53.8655"N	80°23'54.0570"W	13932.77	341.529	0.45	0.00	0.45
22483.00	89.720	329.350	7865.21	14022.79	13296.73	-4462.69	1746750.67	395300.20	39°34'54.6684"N	80°23'54.6860"W	14025.64	341.447	0.00	0.00	0.00
22578.00	90.090	329.660	7865.37	14116.11	13378.59	-4510.90	1746702.46	395382.06	39°34'55.4726"N	80°23'55.3121"W	14118.60	341.367	0.51	0.39	0.33
22674.00	90.150	329.590	7865.17	14210.45	13461.41	-4559.44	1746653.92	395464.87	39°34'56.2863"N	80°23'55.9426"W	14212.61	341.289	0.10	0.06	-0.07
22770.00	90.180	329.520	7864.89	14304.77	13544.18	-4608.08	1746605.28	395547.63	39°34'57.0994"N	80°23'56.5745"W	14306.61	341.210	0.08	0.03	-0.07
22865.00	90.000	328.910	7864.74	14398.00	13625.79	-4656.71	1746556.66	395629.24	39°34'57.9012"N	80°23'57.2059"W	14399.55	341.132	0.67	-0.19	-0.64
22961.00	89.720	329.550	7864.98	14492.21	13708.28	-4705.82	1746507.55	395711.72	39°34'58.7115"N	80°23'57.8436"W	14493.50	341.054	0.73	-0.29	0.67
23056.00	89.750	328.750	7865.42	14585.42	13789.83	-4754.53	1746458.84	395793.27	39°34'59.5127"N	80°23'58.4762"W	14586.47	340.977	0.84	0.03	-0.84
23151.00	89.880	329.190	7865.73	14678.57	13871.24	-4803.51	1746409.87	395874.67	39°35'0.3124"N	80°23'59.1121"W	14679.40	340.899	0.48	0.14	0.46
23246.00	89.820	329.070	7865.97	14771.78	13952.78	-4852.25	1746361.13	395956.21	39°35'1.1134"N	80°23'59.7450"W	14772.42	340.824	0.14	-0.06	-0.13
23335.00	90.060	329.620	7866.07	14859.16	14029.34	-4897.63	1746315.76	396032.77	39°35'1.8655"N	80°24'0.3344"W	14859.65	340.756	0.67	0.27	0.62
23430.00	90.310	329.610	7865.76	14952.51	14111.29	-4945.68	1746267.71	396114.71	39°35'2.6707"N	80°24'0.9585"W	14952.87	340.686	0.26	0.26	-0.01
23525.00	89.780	328.940	7865.69	15045.76	14192.96	-4994.21	1746219.18	396196.37	39°35'3.4729"N	80°24'1.5889"W	15046.00	340.614	0.90	-0.56	-0.71
23620.00	90.250	329.710	7865.66	15139.03	14274.66	-5042.68	1746170.71	396278.07	39°35'4.2756"N	80°24'2.2183"W	15139.17	340.544	0.95	0.49	0.81
23715.00	89.780	328.710	7865.64	15232.25	14356.27	-5091.31	1746122.09	396359.68	39°35'5.0773"N	80°24'2.8498"W	15232.33	340.473	1.16	-0.49	-1.05
23810.00	90.000	329.520	7865.82	15325.45	14437.80	-5140.07	1746073.33	396441.20	39°35'5.8782"N	80°24'3.4831"W	15325.48	340.404	0.88	0.23	0.85
23905.00	89.880	328.650	7865.92	15418.64	14519.30	-5188.88	1746024.52	396522.70	39°35'6.6788"N	80°24'4.1169"W	15418.64	340.334	0.92	-0.13	-0.92
23959.00‡	89.880	328.650	7866.03	15471.53	14565.42	-5216.98	1745996.43	396568.81	39°35'7.1318"N	80°24'4.4816"W	15471.53	340.294	0.00	0.00	0.00



Actual Wellpath Report

Elliott 15H (L-003937) AWP Proj: 23959'
Page 11 of 12



REFERENCE WELLPATH IDENTIFICATION

Operator	EQT PRODUCTION COMPANY	Well	Elliott 15H (L-003937)
Field	Marion	API	47-049-02505-00-00
Facility	Elliott Pad	Wellbore	Elliott 15H (L-003937) AWB
Slot	Slot 15		

HOLE & CASING SECTIONS - Ref Wellbore: Elliott 15H (L-003937) AWB Ref Wellpath: Elliott 15H (L-003937) AWP Proj: 23959'

String/Diameter	Start MD [ft]	End MD [ft]	Interval [ft]	Start TVD [ft]	End TVD [ft]	Start N/S [ft]	Start E/W [ft]	End N/S [ft]	End E/W [ft]
17.5in Open Hole	28.00	1030.00	1002.00	28.00	1029.99	0.00	0.00	-2.98	-0.10
13.375in Casing Surface	28.00	1030.00	1002.00	28.00	1029.99	0.00	0.00	-2.98	-0.10
12.25in Open Hole	1030.00	2503.00	1473.00	1029.99	2502.98	-2.98	-0.10	-7.54	-0.52
9.625in Casing Intermediate	28.00	2503.00	2475.00	28.00	2502.98	0.00	0.00	-7.54	-0.52
8.75in Open Hole	2503.00	7444.00	4941.00	2502.98	6834.70	-7.54	-0.52	824.20	2009.67
8.5in Open Hole	7444.00	23959.00	16515.00	6834.70	7866.03	824.20	2009.67	14565.42	-5216.98
5.5in Casing Production	28.00	23959.00	23931.00	28.00	7866.03	0.00	0.00	14565.42	-5216.98

TARGETS

Name	TVD [ft]	North [ft]	East [ft]	Grid East [US ft]	Grid North [US ft]	Latitude	Longitude	Shape
Elliott 15H LP Rev-1	7832.00	1666.36	2273.19	1753486.14	383670.53	39°33'0.3849"N	80°22'27.2156"W	point
Elliott 15H BHL Rev-1	8092.40	14565.60	-5218.73	1745994.67	396568.99	39°35'7.1334"N	80°24'4.5040"W	point

WELLPATH COMPOSITION - Ref Wellbore: Elliott 15H (L-003937) AWB Ref Wellpath: Elliott 15H (L-003937) AWP Proj: 23959'

Start MD [ft]	End MD [ft]	Positional Uncertainty Model	Log Name/Comment	Wellbore	Survey Date
28.00	2479.00	Gyrodatta 2015 - CT+WIR+ALC	01 Gyrodatta Cont Gyro <12-1/4">(115'-2479')	Elliott 15H (L-003937) AWB	7/8/2021
2479.00	7369.00	OWSG MWD rev2 - Standard	02 SDI MWD <8-3/4">(2479')(2547'-7369')	Elliott 15H (L-003937) AWB	7/8/2021
7369.00	23959.00	OWSG MWD rev2 + IFR1 + Multi-Station Correction	03 BH AT Curve + H&P MSA <8-1/2">(7369')(7457'-23905')	Elliott 15H (L-003937) AWB	8/31/2021



Actual Wellpath Report

Elliott 15H (L-003937) AWP Proj: 23959'

Page 12 of 12

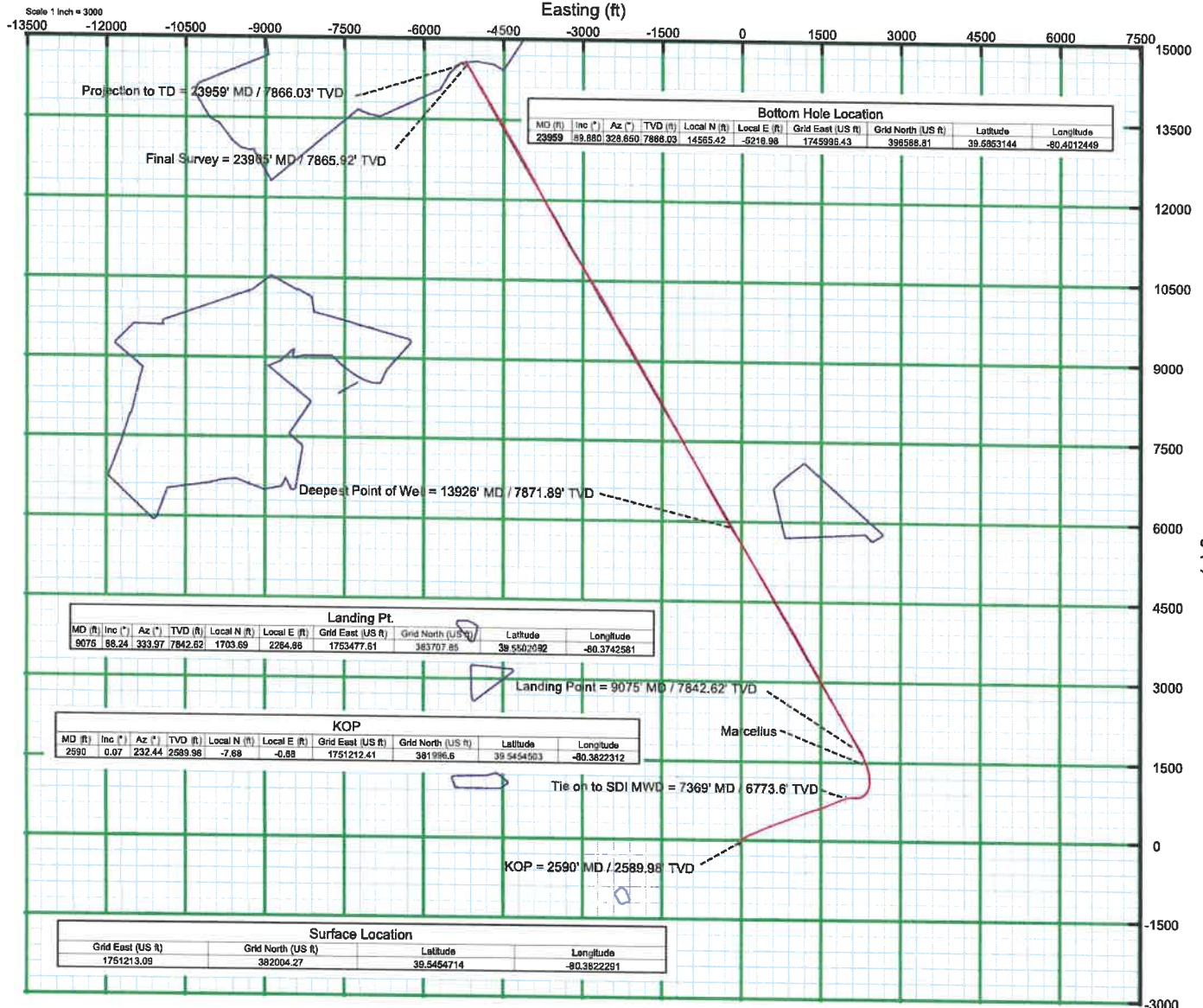
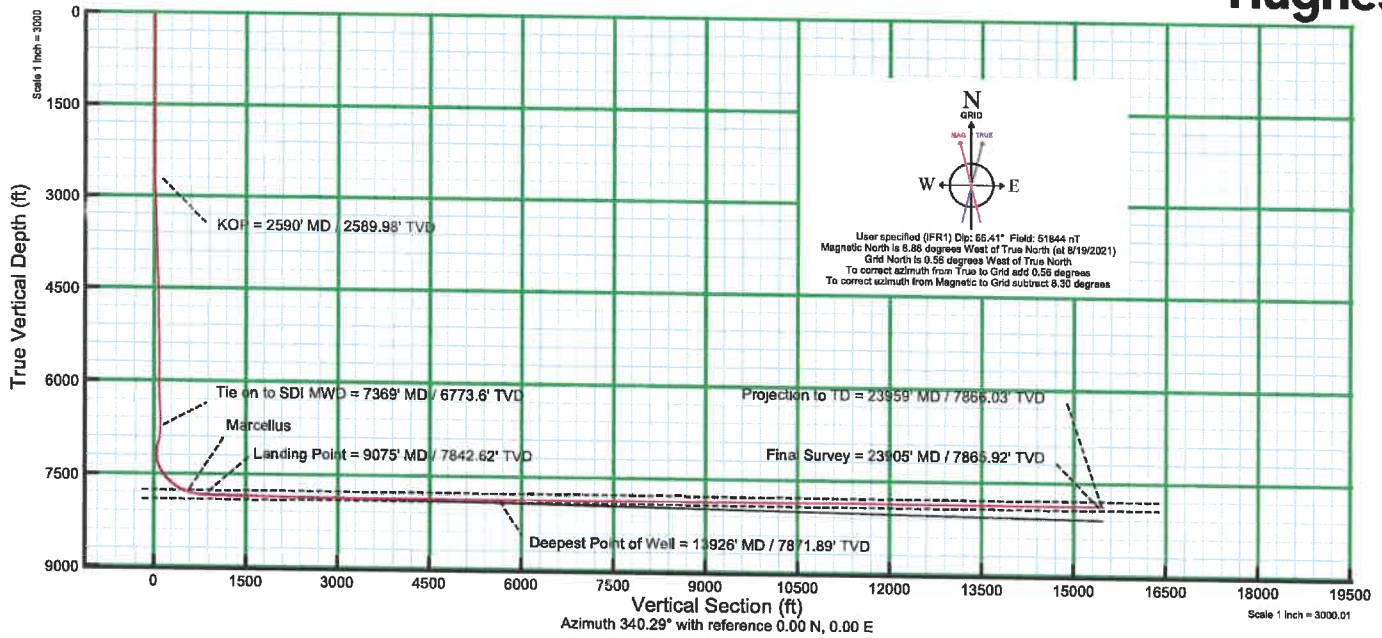


REFERENCE WELLPATH IDENTIFICATION			
Operator	EQT PRODUCTION COMPANY	Well	Elliott 15H (L-003937)
Field	Marion	API	47-049-02505-00-00
Facility	Elliott Pad	Wellbore	Elliott 15H (L-003937) AWB
Slot	Slot 15		

COMMENTS
<p>Wellpath general comments API: 47-049-02505-0000 BH Job #: 110974188 Rig: Patterson 292 Duration: 9/3/21 - 9/6/21</p> <p>01_Gyrodatta Cont Gyro <12-1/4">(115'-2479') 02_SDI MWD <8-3/4">(2479')(2547'-7369') 03_BH AT Curve + H&P MSA <8-1/2">(7369')(7457'-23905') Projected MD at TD: 23959'</p>



KB Elevation=1370 FT
 Ground Elevation=1342 FT
 All Survey Measurements were taken from KB Elevation



10/14/2022