



Actual Wellpath Report

Elliott 11H (L-003939) AWP Proj: 23242'
Page 1 of 12



REFERENCE WELLPATH IDENTIFICATION			
Operator	EQT PRODUCTION COMPANY	Well	Elliott 11H (L-003939)
Field	Marion	API	47-049-02503-00-00
Facility	Elliot Pad	Wellbore	Elliott 11H (L-003939) AWB
Slot	Slot 11		

REPORT SETUP INFORMATION			
Projection System	NAD27 / Lambert West Virginia SP, Northern Zone (4701), US feet	Software System	WellArchitect® 6.0
North Reference	Grid	User	Hilpthop
Scale	0.999942	Report Generated	8/2/2021 at 9:27:56 AM
Convergence at Slot	0.56° West	Databases	WA_MPL_EASTERNUS_Defn

WELLPATH LOCATION						
	Local coordinates		Grid coordinates		Geographic coordinates	
	North [ft]	East [ft]	Easting [US ft]	Northing [US ft]	Latitude	Longitude
Slot location	69.08	29.19	1751201.42	381976.63	39°32'43.4227"N	80°22'56.1702"W
Facility Reference Point			1751172.23	381907.55	39°32'42.7371"N	80°22'56.5342"W
Field Reference Point			1931053.01	433518.91	39°41'24.0000"N	79°44'42.0000"W

WELLPATH DATUM			
Datum method	Minimum curvature	Patterson 292 (RKB) to Facility Vertical Datum	1370.00ft
Horizontal Reference Point	Slot	Patterson 292 (RKB) to Mean Sea Level	1370.00ft
Vertical Reference Point	Patterson 292 (RKB)	Patterson 292 (RKB) to Ground Level at Slot (Slot 11)	28.00ft
MD Reference Point	Patterson 292 (RKB)	Section Origin	N 0.00, E 0.00 ft
Field Vertical Reference	Mean Sea Level	Section Azimuth	332.96°



Actual Wellpath Report

Elliott 11H (L-003939) AWP Proj: 23242'
Page 2 of 12



REFERENCE WELLPATH IDENTIFICATION

Operator	EQT PRODUCTION COMPANY	Well	Elliott 11H (L-003939)
Field	Marion	API	47-049-02503-00-00
Facility	Elliot Pad	Wellbore	Elliott 11H (L-003939) AWB
Slot	Slot 11		

WELLPATH DATA (252 stations) † = interpolated, ‡ = extrapolated station

MD [ft]	Inclination [°]	Azimuth [°]	TVD [ft]	Vert Sect [ft]	North [ft]	East [ft]	Grid East [US ft]	Grid North [US ft]	Latitude	Longitude	Closure Dist [ft]	Closure Dir [°]	DLS [°/100ft]	Build Rate [°/100ft]	Turn Rate [°/100ft]
0.00	0.000	185.230	0.00	0.00	0.00	0.00	1751201.42	381976.63	39°32'43.4227"N	80°22'56.1702"W	0.00	0.000	0.00	0.00	0.00
28.00	0.000	185.230	28.00	0.00	0.00	0.00	1751201.42	381976.63	39°32'43.4227"N	80°22'56.1702"W	0.00	0.000	0.00	0.00	0.00
115.00	0.370	185.230	115.00	-0.24	-0.28	-0.03	1751201.39	381976.35	39°32'43.4199"N	80°22'56.1705"W	0.28	183.543	0.43	0.43	0.00
215.00	0.230	178.470	215.00	-0.69	-0.80	-0.05	1751201.37	381975.83	39°32'43.4147"N	80°22'56.1707"W	0.80	183.545	0.14	-0.14	-6.76
315.00	0.080	163.250	315.00	-0.94	-1.07	-0.02	1751201.40	381975.56	39°32'43.4121"N	80°22'56.1704"W	1.07	181.296	0.15	-0.15	-4.522
415.00	0.030	193.400	415.00	-1.03	-1.16	-0.01	1751201.41	381975.47	39°32'43.4112"N	80°22'56.1702"W	1.16	180.500	0.06	-0.05	30.15
515.00	0.040	198.550	515.00	-1.07	-1.22	-0.03	1751201.39	381975.41	39°32'43.4106"N	80°22'56.1704"W	1.22	181.283	0.01	0.01	5.15
615.00	0.040	183.210	615.00	-1.13	-1.29	-0.04	1751201.38	381975.34	39°32'43.4099"N	80°22'56.1705"W	1.29	181.795	0.01	0.00	-15.34
715.00	0.080	206.930	715.00	-1.20	-1.39	-0.07	1751201.35	381975.24	39°32'43.4090"N	80°22'56.1710"W	1.39	183.056	0.05	0.04	23.72
815.00	0.070	225.560	815.00	-1.26	-1.49	-0.15	1751201.27	381975.14	39°32'43.4079"N	80°22'56.1719"W	1.50	185.716	0.03	-0.01	18.63
915.00	0.090	218.520	915.00	-1.31	-1.59	-0.24	1751201.18	381975.04	39°32'43.4069"N	80°22'56.1731"W	1.61	188.620	0.02	0.02	7.04
1015.00	0.150	203.490	1015.00	-1.43	-1.78	-0.34	1751201.08	381974.85	39°32'43.4051"N	80°22'56.1743"W	1.81	190.924	0.07	0.06	-15.03
1115.00	0.190	202.960	1115.00	-1.62	-2.05	-0.46	1751200.96	381974.58	39°32'43.4024"N	80°22'56.1758"W	2.10	192.645	0.04	0.04	-9.53
1215.00	0.230	209.020	1215.00	-1.83	-2.38	-0.62	1751200.80	381974.25	39°32'43.3991"N	80°22'56.1778"W	2.46	194.658	0.05	0.04	6.06
1315.00	0.280	194.210	1314.99	-2.13	-2.79	-0.78	1751200.64	381973.84	39°32'43.3950"N	80°22'56.1798"W	2.90	195.605	0.08	0.05	-14.81
1415.00	0.430	181.330	1414.99	-2.64	-3.40	-0.85	1751200.57	381973.23	39°32'43.3890"N	80°22'56.1806"W	3.51	193.995	0.17	0.15	-12.88
1515.00	0.510	181.050	1514.99	-3.37	-4.22	-0.86	1751200.56	381972.41	39°32'43.3809"N	80°22'56.1807"W	4.31	191.575	0.08	0.08	-0.28
1615.00	0.560	192.840	1614.99	-4.13	-5.14	-0.98	1751200.44	381971.49	39°32'43.3717"N	80°22'56.1821"W	5.24	190.803	0.12	0.05	11.79
1715.00	0.560	205.700	1714.98	-4.81	-6.06	-1.30	1751200.12	381970.57	39°32'43.3627"N	80°22'56.1861"W	6.20	192.125	0.13	0.00	12.86
1815.00	0.450	197.780	1814.98	-5.38	-6.87	-1.63	1751199.79	381969.76	39°32'43.3546"N	80°22'56.1902"W	7.07	193.369	0.13	-0.11	7.92
1915.00	0.310	198.260	1914.97	-5.85	-7.50	-1.84	1751199.58	381969.13	39°32'43.3483"N	80°22'56.1927"W	7.73	193.764	0.14	-0.14	0.48
2015.00	0.210	207.330	2014.97	-6.15	-7.92	-2.01	1751199.41	381968.71	39°32'43.3442"N	80°22'56.1948"W	8.17	194.214	0.11	-0.10	9.07
2115.00	0.210	208.820	2114.97	-6.36	-8.25	-2.18	1751199.24	381968.38	39°32'43.3409"N	80°22'56.1970"W	8.53	194.804	0.01	0.00	1.49
2215.00	0.250	214.300	2214.97	-6.56	-8.59	-2.39	1751199.03	381968.04	39°32'43.3376"N	80°22'56.1996"W	8.92	195.557	0.05	0.04	5.48
2315.00	0.110	234.790	2314.97	-6.68	-8.82	-2.59	1751198.83	381967.81	39°32'43.3352"N	80°22'56.2022"W	9.20	196.372	0.15	-0.14	20.49
2415.00	0.260	218.950	2414.97	-6.79	-9.06	-2.81	1751198.61	381967.57	39°32'43.3329"N	80°22'56.2050"W	9.48	197.259	0.16	0.15	-15.84
2515.00	0.130	180.860	2514.97	-6.98	-9.35	-2.96	1751198.46	381967.28	39°32'43.3300"N	80°22'56.2068"W	9.80	197.562	0.18	-0.13	-38.09
2534.00	0.160	174.920	2533.97	-7.02	-9.39	-2.96	1751198.46	381967.24	39°32'43.3295"N	80°22'56.2067"W	9.85	197.466	0.18	0.16	-31.26
2548.00	0.290	220.770	2547.97	-7.05	-9.44	-2.98	1751198.44	381967.19	39°32'43.3291"N	80°22'56.2070"W	9.90	197.504	1.52	0.93	327.50
2592.00	0.350	218.030	2591.97	-7.15	-9.63	-3.13	1751198.29	381967.00	39°32'43.3272"N	80°22'56.2090"W	10.13	198.019	0.14	0.14	-6.23



Actual Wellpath Report

Elliott 11H (L-003939) AWP Proj: 23242'
Page 3 of 12



REFERENCE WELLPATH IDENTIFICATION			
Operator	EQT PRODUCTION COMPANY	Well	Elliott 11H (L-003939)
Field	Marion	API	47-049-02503-00-00
Facility	Elliot Pad	Wellbore	Elliott 11H (L-003939) AWB
Slot	Slot 11		

WELLPATH DATA (252 stations)																
MD [ft]	Inclination [°]	Azimuth [°]	TVD [ft]	Vert Sect [ft]	North [ft]	East [ft]	Grid East [US ft]	Grid North [US ft]	Latitude	Longitude	Closure Dist [ft]	Closure Dir [°]	DLS [°/100ft]	Build Rate [°/100ft]	Turn Rate [°/100ft]	
2635.00	0.530	268.300	2634.97	7.12	9.74	-3.41	1751198.01	3819668.9	39°32'43.3261"N	80°22'56.2125"W	10.32	199.308	0.95	0.42	116.91	
2678.00	1.190	289.760	2677.96	6.71	9.59	-4.03	1751197.39	381967.04	39°32'43.3275"N	80°22'56.2205"W	10.41	202.791	1.68	1.53	49.91	
2764.00	3.410	305.910	2763.89	-3.78	7.79	-6.94	1751194.48	381968.84	39°32'43.3450"N	80°22'56.2519"W	10.44	221.704	2.66	2.58	18.78	
2850.00	5.990	311.120	2849.59	2.66	-3.34	-12.40	1751189.02	381973.29	39°32'43.3884"N	80°22'56.3280"W	12.84	254.919	3.04	3.00	6.06	
2937.00	5.250	323.530	2936.18	10.80	2.85	-18.18	1751183.24	381979.48	39°32'43.4490"N	80°22'56.4026"W	18.40	278.896	1.63	0.85	14.26	
3023.00	4.180	338.890	3021.89	17.80	8.93	-21.65	1751179.77	381985.56	39°32'43.5089"N	80°22'56.4477"W	23.42	292.424	1.91	-1.24	17.86	
3109.00	4.560	9.430	3107.65	23.67	15.23	-22.22	1751179.20	381991.86	39°32'43.5710"N	80°22'56.4557"W	26.94	304.431	2.71	0.44	35.51	
3195.00	5.150	21.310	3193.34	28.98	22.20	-20.26	1751181.16	381998.83	39°32'43.6401"N	80°22'56.4315"W	30.05	317.621	1.35	0.69	13.81	
3282.00	5.760	42.600	3279.96	33.10	29.05	-15.88	1751185.54	382005.68	39°32'43.7082"N	80°22'56.3766"W	33.11	331.336	2.41	0.70	24.47	
3368.00	5.950	59.050	3365.52	34.90	34.52	-9.14	1751192.28	382011.15	39°32'43.7630"N	80°22'56.2912"W	35.71	345.175	1.96	0.22	19.13	
3454.00	6.580	72.980	3451.01	34.35	38.26	-0.60	1751200.82	382014.88	39°32'43.8007"N	80°22'56.1827"W	38.26	359.098	1.91	0.73	16.20	
3540.00	7.580	79.030	3536.35	31.92	40.78	9.68	1751211.10	382017.41	39°32'43.8266"N	80°22'56.0518"W	41.91	13.351	1.45	1.16	7.03	
3626.00	8.360	82.960	3621.52	28.21	42.62	21.45	1751222.87	382019.25	39°32'43.8460"N	80°22'55.9017"W	47.72	26.715	1.11	0.91	4.57	
3713.00	9.360	85.160	3707.48	23.38	44.00	34.78	1751236.20	382020.62	39°32'43.8608"N	80°22'55.7318"W	56.08	38.326	1.21	1.15	2.53	
3799.00	11.000	85.060	3792.12	17.65	45.29	49.92	1751251.34	382021.92	39°32'43.8751"N	80°22'55.5386"W	67.41	47.783	1.91	1.91	0.12	
3885.00	12.690	85.180	3876.29	10.99	46.79	67.51	1751268.93	382023.42	39°32'43.8917"N	80°22'55.3143"W	82.14	55.273	1.97	1.97	0.14	
3971.00	13.540	87.640	3960.05	3.21	48.00	86.98	1751288.40	382024.63	39°32'43.9055"N	80°22'55.0659"W	99.35	61.108	1.18	0.99	2.86	
4049.00	13.990	88.130	4035.81	-4.61	48.69	105.53	1751306.94	382025.31	39°32'43.9141"N	80°22'54.8293"W	116.22	65.234	0.60	0.58	0.63	
4135.00	14.200	88.630	4119.22	-13.25	49.66	126.45	1751327.86	382026.29	39°32'43.9257"N	80°22'54.5624"W	135.85	68.557	0.51	0.24	4.86	
4221.00	14.410	88.4760	4202.55	-21.44	51.28	147.63	1751349.04	382027.91	39°32'43.9438"N	80°22'54.2922"W	156.28	70.846	0.56	0.24	2.06	
4308.00	13.260	88.920	4287.03	-29.51	52.80	168.38	1751369.79	382029.43	39°32'43.9608"N	80°22'54.0276"W	176.46	72.588	1.45	-1.32	2.48	
4394.00	11.940	90.230	4370.95	-37.60	53.30	187.12	1751388.53	382029.92	39°32'43.9676"N	80°22'53.7884"W	194.57	74.102	1.75	-1.53	3.85	
4480.00	10.740	91.860	4455.27	-45.55	53.00	204.03	1751405.44	382029.63	39°32'43.9663"N	80°22'53.5725"W	210.80	75.438	1.44	-1.40	1.90	
4566.00	9.700	92.740	4539.91	-53.02	52.40	219.27	1751420.68	382029.02	39°32'43.9618"N	80°22'53.3778"W	225.45	76.561	1.22	-1.21	1.02	
4653.00	9.380	88.490	4625.71	-69.71	52.23	233.68	1751435.09	382028.86	39°32'43.9615"N	80°22'53.1939"W	239.45	77.401	0.89	-0.37	4.89	
4739.00	9.240	87.640	4710.57	-65.62	52.70	247.59	1751448.99	382029.33	39°32'43.9675"N	80°22'53.0165"W	253.13	77.984	0.23	-0.16	0.99	
4825.00	9.680	88.990	4795.40	-71.67	53.11	261.72	1751463.12	382029.74	39°32'43.9730"N	80°22'52.8362"W	267.05	78.528	0.57	0.51	1.57	
4911.00	10.740	89.920	4880.04	-78.48	53.25	276.96	1751478.36	382029.88	39°32'43.9758"N	80°22'52.6416"W	282.03	79.116	1.25	1.23	1.08	
4998.00	11.440	91.140	4965.42	-86.23	53.09	293.69	1751495.09	382029.72	39°32'43.9758"N	80°22'52.4280"W	298.45	79.753	0.85	0.80	1.40	
5084.00	10.940	87.470	5049.78	-93.64	53.28	310.37	1751511.77	382029.91	39°32'43.9793"N	80°22'52.2152"W	314.91	80.259	1.01	-0.58	4.27	



Actual Wellpath Report

Elliott 11H (L-003939) AWP Proj: 23242'
Page 4 of 12



REFERENCE WELLPATH IDENTIFICATION			
Operator	EQT PRODUCTION COMPANY	Well	Elliott 11H (L-003939)
Field	Marion	API	47-049-02503-00-00
Facility	Elliot Pad	Wellbore	Elliott 11H (L-003939) AWB
Slot	Slot 11		

WELLPATH DATA (252 stations)															
MD [ft]	Inclination [°]	Azimuth [°]	TVD [ft]	Vert Sect [ft]	North [ft]	East [ft]	Grid East [US ft]	Grid North [US ft]	Latitude	Longitude	Closure Dist [ft]	Closure Dir [°]	DLS [°/100ft]	Build Rate [°/100ft]	Turn Rate [°/100ft]
5170.00	11.340	87.140	5134.16	-100.49	54.06	326.97	17 51 528.37	38 20 30.69	39°32' 43.9817"N	80°22' 52.0034"W	331.41	80.611	0.47	0.47	-0.38
5265.00	11.790	89.690	5227.23	-108.68	54.58	346.00	17 51 547.40	38 20 31.21	39°32' 43.9957"N	80°22' 51.7605"W	350.28	81.035	0.72	0.47	2.68
5360.00	11.690	88.610	5320.25	-117.21	54.87	365.33	17 51 566.73	38 20 31.49	39°32' 44.0004"N	80°22' 51.5138"W	369.43	81.459	0.25	-0.11	-1.14
5456.00	12.400	87.340	5414.13	-125.68	55.58	385.35	17 51 586.74	38 20 32.21	39°32' 44.0093"N	80°22' 51.2584"W	389.34	81.792	0.79	0.74	-1.32
5551.00	13.730	84.720	5506.67	-134.07	57.09	406.76	17 51 608.16	38 20 33.72	39°32' 44.0264"N	80°22' 50.9852"W	410.75	82.010	1.53	1.40	-2.76
5646.00	13.420	85.150	5599.02	-142.41	59.06	428.97	17 51 630.37	38 20 35.69	39°32' 44.0480"N	80°22' 50.7020"W	433.02	82.161	0.34	-0.33	0.45
5741.00	12.700	88.550	5691.56	-151.09	60.26	450.40	17 51 651.79	38 20 36.89	39°32' 44.0619"N	80°22' 50.4286"W	454.41	82.380	1.11	-0.76	3.58
5835.00	12.530	93.900	5783.29	-160.79	59.83	470.90	17 51 672.29	38 20 36.45	39°32' 44.0596"N	80°22' 50.1669"W	474.69	82.760	1.26	-0.18	5.69
5931.00	11.550	96.850	5877.18	-171.50	57.97	490.84	17 51 692.23	38 20 34.60	39°32' 44.0432"N	80°22' 49.9122"W	494.25	83.264	1.21	-1.02	3.07
6026.00	11.370	93.110	5970.29	-181.51	56.33	509.63	17 51 711.02	38 20 32.96	39°32' 44.0288"N	80°22' 49.6721"W	512.73	83.693	0.80	-0.19	-3.94
6121.00	11.150	90.660	6063.46	-190.48	55.72	528.16	17 51 729.55	38 20 32.34	39°32' 44.0245"N	80°22' 49.4354"W	531.09	83.978	0.55	-0.23	2.58
6217.00	11.310	88.270	6157.62	-198.82	55.89	546.86	17 51 748.24	38 20 32.52	39°32' 44.0281"N	80°22' 49.1969"W	549.70	84.164	0.51	0.17	2.49
6312.00	11.450	85.320	6250.76	-206.39	56.94	565.56	17 51 766.95	38 20 33.57	39°32' 44.0403"N	80°22' 48.9582"W	568.42	84.251	0.63	0.15	-3.11
6407.00	12.330	85.990	6343.72	-213.95	58.42	585.08	17 51 786.47	38 20 35.05	39°32' 44.0568"N	80°22' 48.7093"W	587.99	84.298	0.94	0.93	0.71
6502.00	13.620	84.600	6436.29	-222.04	60.18	606.34	17 51 807.72	38 20 36.81	39°32' 44.0762"N	80°22' 48.4382"W	609.32	84.331	1.40	1.36	-1.46
6595.00	13.440	86.890	6526.71	-230.46	61.80	628.03	17 51 829.41	38 20 38.43	39°32' 44.0943"N	80°22' 48.1615"W	631.06	84.380	0.61	-0.19	2.46
6688.00	14.460	88.150	6616.97	-239.79	62.76	650.43	17 51 851.81	38 20 39.39	39°32' 44.1060"N	80°22' 47.8757"W	653.45	84.488	1.14	1.10	1.35
6784.00	14.180	87.110	6709.98	-249.70	63.74	674.15	17 51 875.53	38 20 40.37	39°32' 44.1180"N	80°22' 47.5730"W	677.16	84.599	0.40	-0.29	-1.08
6879.00	13.360	83.880	6802.25	-258.38	65.50	696.69	17 51 898.06	38 20 42.13	39°32' 44.1375"N	80°22' 47.2856"W	699.76	84.629	1.18	-0.86	-3.40
6975.00	13.660	83.530	6895.60	-266.33	67.96	718.98	17 51 920.35	38 20 44.59	39°32' 44.1640"N	80°22' 47.0013"W	722.18	84.600	0.32	0.31	-0.36
7070.00	14.980	80.680	6987.65	-274.00	71.21	742.24	17 51 943.62	38 20 47.84	39°32' 44.1984"N	80°22' 46.7048"W	745.65	84.520	1.57	1.39	-3.00
7177.00	17.040	78.000	7090.49	-282.28	76.71	771.23	17 51 972.60	38 20 53.34	39°32' 44.2555"N	80°22' 46.3355"W	775.03	84.320	2.04	1.93	2.50
7272.00	12.870	47.880	7182.39	-283.14	86.72	792.73	17 51 994.10	38 20 63.35	39°32' 44.3565"N	80°22' 46.0623"W	797.46	83.757	9.14	-4.39	-31.71
7367.00	12.410	18.860	7275.18	-273.28	103.49	803.89	17 52 005.26	38 20 80.12	39°32' 44.5234"N	80°22' 45.9219"W	810.52	82.664	6.63	-0.48	-30.55
7462.00	14.310	0.900	7367.64	-255.79	124.90	807.37	17 52 008.75	38 21 01.53	39°32' 44.7353"N	80°22' 45.8801"W	816.98	81.206	4.78	2.00	-18.91
7558.00	18.320	349.320	7459.78	-230.82	151.61	804.76	17 52 006.13	38 21 28.23	39°32' 44.9990"N	80°22' 45.9168"W	818.92	79.331	5.36	4.18	-12.06
7653.00	28.210	337.230	7547.00	-193.99	187.09	793.27	17 51 994.64	38 21 63.71	39°32' 45.3485"N	80°22' 46.0679"W	815.04	76.729	11.51	10.41	-12.73
7747.00	39.340	335.750	7625.01	-141.91	234.90	772.37	17 51 973.74	38 22 11.51	39°32' 45.8189"N	80°22' 46.3407"W	807.30	73.084	11.87	11.84	-1.57
7842.00	48.840	336.990	7693.17	-76.01	295.41	745.96	17 51 947.34	38 22 27.02	39°32' 46.4144"N	80°22' 46.6853"W	802.32	68.396	10.04	10.00	1.31
7937.00	57.300	333.540	7750.21	-0.21	364.25	714.11	17 51 915.49	38 23 40.85	39°32' 47.0916"N	80°22' 47.1005"W	801.64	62.975	9.36	8.91	-3.63



Actual Wellpath Report

Elliott 11H (L-00393) AWP Proj: 23242'
Page 5 of 12



REFERENCE WELLPATH IDENTIFICATION			
Operator	EQT PRODUCTION COMPANY	Well	Elliott 11H (L-00393)
Field	Marion	API	47-049-02503-00-00
Facility	Elliot Pad	Wellbore	Elliott 11H (L-00393) AWB
Slot	Slot 11		

WELLPATH DATA (252 stations)															
MD [ft]	Inclination [°]	Azimuth [°]	TVD [ft]	Vert Sect [ft]	North [ft]	East [ft]	Grid East [US ft]	Grid North [US ft]	Latitude	Longitude	Closure Dist [ft]	Closure Dir [°]	DLS [°/100ft]	Build Rate [°/100ft]	Turn Rate [°/100ft]
8032.00	65.540	331.480	7795.62	83.13	438.15	675.58	1751876.96	382414.76	39°32'47.8183"N	80°22'47.6015"W	805.23	57.034	8.88	8.67	2.17
8127.00	74.260	332.660	7828.24	172.25	516.91	633.86	1751835.24	382493.51	39°32'48.5926"N	80°22'48.1439"W	817.91	50.803	9.25	9.18	1.24
8222.00	81.690	335.080	7848.02	265.08	600.28	593.00	1751794.38	382576.87	39°32'49.4126"N	80°22'48.6760"W	843.79	44.650	8.21	7.82	2.55
8318.00	90.180	332.780	7854.82	360.73	686.20	550.95	1751752.33	382662.79	39°32'50.2577"N	80°22'49.2235"W	880.01	38.761	9.16	8.84	2.40
8413.00	89.690	332.130	7854.93	455.72	770.43	507.01	1751708.40	382747.02	39°32'51.0859"N	80°22'49.7948"W	922.30	33.348	0.86	0.52	0.68
8508.00	90.310	331.390	7854.93	550.70	854.13	462.06	1751663.46	382830.70	39°32'51.9086"N	80°22'50.3791"W	971.10	28.412	1.02	0.65	0.78
8604.00	89.780	330.700	7854.85	646.65	938.12	415.59	1751616.98	382914.70	39°32'52.7343"N	80°22'50.9828"W	1026.06	23.893	0.91	0.55	0.72
8699.00	89.970	330.140	7855.06	741.55	1020.74	368.69	1751570.09	382997.31	39°32'53.5462"N	80°22'51.5918"W	1085.29	19.860	0.62	0.20	0.59
8794.00	89.380	330.880	7855.60	836.46	1103.43	321.93	1751523.33	383080.00	39°32'54.3589"N	80°22'52.1991"W	1149.43	16.265	1.00	0.62	0.78
8889.00	89.020	329.500	7856.92	931.34	1185.85	274.71	1751476.11	383162.41	39°32'55.1689"N	80°22'52.8122"W	1217.25	13.043	1.50	0.38	1.45
8984.00	89.480	329.320	7857.17	1026.15	1267.62	226.37	1751427.77	383244.18	39°32'55.9723"N	80°22'53.4395"W	1287.68	10.125	0.52	0.48	0.19
9079.00	89.750	327.980	7858.80	1120.88	1348.75	176.94	1751378.35	383325.30	39°32'56.7693"N	80°22'54.0806"W	1360.31	7.474	1.44	0.28	4.41
9174.00	89.290	328.440	7859.60	1215.55	1429.49	126.90	1751328.31	383406.04	39°32'57.5624"N	80°22'54.7295"W	1435.12	5.073	0.68	0.48	0.48
9269.00	90.180	330.430	7860.04	1310.36	1511.29	78.59	1751280.01	383487.83	39°32'58.3661"N	80°22'55.3564"W	1513.33	2.977	2.29	0.94	2.09
9364.00	89.910	332.070	7859.97	1405.31	1594.58	32.90	1751234.32	383571.11	39°32'59.1847"N	80°22'55.9501"W	1594.91	1.182	1.75	0.28	1.73
9460.00	90.710	330.100	7859.45	1501.26	1678.60	43.51	1751187.91	383655.13	39°33'00.0106"N	80°22'56.5531"W	1678.66	359.539	2.21	0.83	2.05
9555.00	90.830	326.680	7858.17	1595.93	1759.49	-63.29	1751138.13	383736.01	39°33'00.8052"N	80°22'57.1987"W	1760.63	357.940	3.60	0.13	-3.60
9650.00	89.290	327.420	7858.07	1690.42	1839.20	-114.96	1751088.64	383815.72	39°33'1.5880"N	80°22'57.8683"W	1842.79	356.423	1.80	4.62	0.78
9746.00	89.140	330.880	7859.38	1786.19	1921.60	-164.18	1751037.25	383898.11	39°33'2.3975"N	80°22'58.5069"W	1928.60	355.117	3.61	0.16	3.60
9841.00	88.180	327.810	7861.61	1880.96	2003.29	-212.60	1750988.84	383979.80	39°33'3.2002"N	80°22'59.1352"W	2014.54	353.942	3.39	-4.01	-3.23
9936.00	88.920	329.350	7864.01	1975.65	2084.33	-262.10	1750939.33	384060.84	39°33'3.9963"N	80°22'59.7774"W	2100.75	352.833	1.80	0.78	1.62
10031.00	90.180	330.420	7864.76	2070.50	2166.50	-309.76	1750891.68	384143.00	39°33'4.8037"N	80°23'0.3961"W	2188.54	351.863	1.74	1.33	1.13
10126.00	89.940	332.210	7864.66	2165.46	2249.84	-355.36	1750846.08	384226.34	39°33'5.6229"N	80°23'0.9886"W	2277.73	351.024	1.90	-0.25	1.88
10221.00	89.820	332.780	7864.86	2260.46	2334.10	-399.23	1750802.21	384310.59	39°33'6.4514"N	80°23'1.5593"W	2368.00	350.294	0.61	-0.13	0.60
10316.00	90.030	330.900	7864.98	2355.44	2417.85	-444.07	1750757.38	384394.34	39°33'7.2747"N	80°23'2.1421"W	2458.30	349.593	1.99	0.22	-1.98
10411.00	88.460	328.700	7866.23	2450.27	2499.95	-491.84	1750709.61	384476.43	39°33'8.0813"N	80°23'2.7623"W	2547.87	348.870	2.84	-1.65	2.32
10506.00	91.570	332.280	7866.21	2545.16	2582.60	-538.63	1750662.83	384559.07	39°33'8.8936"N	80°23'3.3699"W	2638.17	348.219	4.99	3.27	3.77
10602.00	88.280	330.130	7866.33	2641.09	2666.71	-584.86	1750616.60	384643.18	39°33'9.7204"N	80°23'3.9707"W	2730.09	347.630	4.09	-3.43	2.24
10696.00	89.140	331.980	7868.45	2735.01	2748.94	-630.34	1750571.12	384725.41	39°33'10.5287"N	80°23'4.5616"W	2820.29	347.085	2.17	0.91	1.97
10791.00	90.770	332.310	7868.52	2830.00	2832.93	-674.72	1750526.74	384809.39	39°33'11.3544"N	80°23'5.1388"W	2912.17	346.603	1.75	1.72	0.35



Actual Wellpath Report

Elliott 11H (L-003939) AWP Proj: 23242'
Page 6 of 12



REFERENCE WELLPATH IDENTIFICATION			
Operator	EQT PRODUCTION COMPANY	Well	Elliott 11H (L-003939)
Field	Marion	API	47-049-02503-00-00
Facility	Elliot Pad	Wellbore	Elliott 11H (L-003939) AWB
Slot	Slot 11		

WELLPATH DATA (252 stations)															
MD [ft]	Inclination [°]	Azimuth [°]	TVD [ft]	Vert Sect [ft]	North [ft]	East [ft]	Grid East [US ft]	Grid North [US ft]	Latitude	Longitude	Closure Dist [ft]	Closure Dir [°]	DLS [°/100ft]	Build Rate [°/100ft]	Turn Rate [°/100ft]
10887.00	88.550	327.030	7869.09	2925.80	29157.6	723.18	1750478.29	384892.21	39°33'12.168"2"N	80°23'57.678"W	3004.10	346.070	5.97	-2.31	-5.50
10981.00	89.850	330.810	7870.41	3019.54	2996.24	771.69	1750429.78	384972.69	39°33'12.958"9"N	80°23'36.397"2"W	3094.02	345.557	4.25	1.38	4.02
11077.00	89.850	330.050	7870.66	3115.44	3079.74	819.06	1750382.41	385056.18	39°33'13.779"4"N	80°23'07.125"W	3186.79	345.107	0.79	0.00	-4.79
11172.00	89.850	330.160	7870.91	3210.33	3162.10	866.41	1750335.06	385138.53	39°33'14.588"8"N	80°23'07.627"3"W	3278.65	344.677	0.12	0.00	0.12
11267.00	89.660	329.270	7871.31	3305.17	3244.13	914.32	1750287.15	385220.56	39°33'15.394"8"N	80°23'08.249"2"W	3370.51	344.260	0.96	-0.20	-0.94
11362.00	89.630	330.040	7871.90	3400.01	3326.11	962.31	1750239.16	385302.54	39°33'16.200"4"N	80°23'08.872"2"W	3462.52	343.864	0.81	-0.03	0.81
11457.00	90.090	329.780	7872.13	3494.88	3408.31	1009.94	1750191.54	385384.73	39°33'17.008"1"N	80°23'09.490"6"W	3554.79	343.495	0.56	0.48	-0.27
11553.00	89.140	328.180	7872.78	3590.64	3490.57	1059.41	1750142.07	385466.99	39°33'17.816"2"N	80°23'10.132"5"W	3647.80	343.117	1.94	-0.99	-4.67
11648.00	90.490	329.560	7873.09	3685.39	3571.89	1108.52	1750092.96	385548.30	39°33'18.615"1"N	80°23'10.769"7"W	3739.95	342.758	2.03	1.42	1.45
11743.00	90.280	328.260	7872.45	3780.15	3653.24	1157.58	1750043.91	385629.65	39°33'19.414"3"N	80°23'11.406"2"W	3832.25	342.419	1.39	-0.22	-4.37
11838.00	90.150	327.130	7872.09	3874.75	3733.53	1208.35	1749993.15	385710.94	39°33'20.202"8"N	80°23'12.064"4"W	3924.20	342.066	1.20	-0.14	-4.19
11933.00	90.180	327.680	7871.82	3969.30	3813.57	1259.52	1749941.97	385792.27	39°33'20.988"8"N	80°23'12.727"8"W	4016.18	341.723	0.58	0.03	0.58
12028.00	90.180	326.500	7871.52	4063.80	3893.32	1311.14	1749890.36	385873.59	39°33'21.772"0"N	80°23'13.396"8"W	4108.17	341.388	1.24	0.00	-4.24
12123.00	90.370	326.130	7871.06	4158.16	3972.37	1363.82	1749837.68	385954.76	39°33'22.548"1"N	80°23'14.079"4"W	4199.97	341.051	0.44	0.20	-0.39
12218.00	91.570	329.970	7869.45	4252.78	4052.95	1414.08	1749787.43	386035.93	39°33'23.339"5"N	80°23'14.731"2"W	4292.56	340.766	4.23	1.26	4.04
12313.00	88.800	327.800	7869.15	4347.52	4134.27	1463.16	1749738.34	386117.10	39°33'24.138"4"N	80°23'15.368"1"W	4385.55	340.511	3.70	2.92	2.28
12408.00	89.820	327.270	7870.29	4442.09	4214.42	1514.15	1749687.36	386198.27	39°33'24.925"5"N	80°23'16.029"1"W	4478.17	340.238	1.21	1.07	-0.56
12503.00	90.310	330.400	7870.18	4536.83	4295.70	1563.31	1749638.20	386279.44	39°33'25.723"9"N	80°23'16.666"9"W	4571.32	340.002	3.33	0.52	3.29
12598.00	89.720	330.590	7870.16	4631.74	4378.38	1610.10	1749591.42	386360.61	39°33'26.536"5"N	80°23'17.274"7"W	4665.04	339.810	0.65	-0.62	0.20
12693.00	89.780	332.320	7870.57	4726.71	4461.82	1655.49	1749546.03	386441.78	39°33'27.356"7"N	80°23'17.864"8"W	4759.05	339.643	1.82	0.06	1.82
12788.00	90.280	332.440	7870.52	4821.70	4546.00	1699.53	1749501.99	386522.95	39°33'28.184"3"N	80°23'18.437"7"W	4853.30	339.502	0.54	0.53	0.13
12883.00	90.830	333.030	7869.60	4916.69	4630.44	1743.05	1749458.47	386604.12	39°33'29.014"5"N	80°23'19.039"7"W	4947.64	339.372	0.85	0.58	0.62
12979.00	90.250	332.840	7868.70	5012.69	4715.92	1786.73	1749414.80	386685.29	39°33'29.855"1"N	80°23'19.572"3"W	5043.05	339.250	0.64	-0.60	-0.20
13074.00	89.940	329.580	7868.54	5107.63	4799.17	1832.47	1749369.06	386766.46	39°33'30.673"3"N	80°23'20.166"9"W	5137.12	339.102	3.45	-0.33	-3.43
13168.00	89.080	328.540	7869.35	5201.41	4879.79	1880.80	1749320.73	386847.63	39°33'31.465"3"N	80°23'20.794"0"W	5229.70	338.922	1.44	-0.91	-4.11
13263.00	90.770	329.680	7869.47	5296.19	4961.31	1929.57	1749271.97	386928.80	39°33'32.266"2"N	80°23'21.427"0"W	5323.33	338.748	2.15	1.78	1.20
13357.00	89.660	329.630	7869.12	5390.03	5042.43	1977.06	1749224.48	387010.97	39°33'33.063"2"N	80°23'22.043"5"W	5416.16	338.591	1.18	4.18	-0.05
13452.00	90.150	330.340	7869.27	5484.90	5124.69	2024.58	1749176.96	387092.14	39°33'33.871"5"N	80°23'22.660"6"W	5510.11	338.443	0.91	0.52	0.75
13547.00	90.250	329.750	7868.94	5579.78	5206.99	2072.01	1749129.53	387173.31	39°33'34.680"3"N	80°23'23.276"6"W	5604.11	338.301	0.63	0.11	-0.62
13642.00	89.720	329.350	7868.97	5674.61	5288.89	2120.16	1749081.39	387254.48	39°33'35.480"5"N	80°23'23.901"6"W	5698.02	338.156	0.70	-0.56	-0.42



Actual Wellpath Report

Elliott 11H (L-00393) AWP Proj: 23242'
Page 7 of 12



REFERENCE WELLPATH IDENTIFICATION			
Operator	EQT PRODUCTION COMPANY	Well	Elliott 11H (L-00393)
Field	Marion	API	47-049-02503-00-00
Facility	Elliot Pad	Wellbore	Elliott 11H (L-00393) AWB
Slot	Slot 11		

WELLPATH DATA (252 stations)															
MD [ft]	Inclination [°]	Azimuth [°]	TVD [ft]	Vert Sect [ft]	North [ft]	East [ft]	Grid East [US ft]	Grid North [US ft]	Latitude	Longitude	Closure Dist [ft]	Closure Dir [°]	DLS [°/100ft]	Build Rate [°/100ft]	Turn Rate [°/100ft]
13737.00	89.780	328.030	7869.38	5769.34	5370.05	2169.53	1749032.02	387346.36	39°33'36.28"23"N	80°23'24.5422"W	5791.75	338.001	1.39	0.06	-4.39
13832.00	89.630	328.450	7869.87	5864.02	5450.83	2219.53	1748982.02	387427.13	39°33'37.07"56"N	80°23'25.1908"W	5885.39	337.844	0.47	-0.16	0.44
13928.00	89.720	329.690	7870.42	5959.79	5533.17	2268.87	1748932.69	387509.47	39°33'37.88"46"N	80°23'25.8312"W	5980.28	337.704	1.30	0.09	1.29
14023.00	88.680	327.920	7871.74	6054.53	5614.42	2318.07	1748883.49	387590.72	39°33'38.68"28"N	80°23'26.4696"W	6074.14	337.565	2.16	-1.09	-4.86
14118.00	90.460	329.110	7872.46	6149.24	5695.43	2367.68	1748833.88	387671.72	39°33'39.47"85"N	80°23'27.1132"W	6167.97	337.427	2.25	1.87	1.25
14213.00	90.310	330.310	7873.82	6244.08	5777.46	2415.59	1748785.97	387753.74	39°33'40.28"44"N	80°23'27.7353"W	6262.12	337.310	1.27	-0.16	1.26
14308.00	89.510	329.970	7874.97	6338.96	5859.85	2462.89	1748738.68	387836.12	39°33'41.0940"N	80°23'28.3496"W	6356.38	337.203	0.92	-0.84	-0.36
14403.00	91.080	330.430	7876.14	6433.85	5942.28	2510.10	1748691.47	387918.55	39°33'41.9041"N	80°23'28.9628"W	6450.68	337.100	1.72	1.65	0.48
14498.00	91.080	330.350	7869.69	6528.74	6024.86	2557.03	1748644.54	388001.13	39°33'42.7156"N	80°23'29.5725"W	6545.02	337.003	0.08	0.00	-0.08
14593.00	90.830	330.150	7868.10	6623.62	6107.33	2604.17	1748597.41	388083.59	39°33'43.5260"N	80°23'30.1847"W	6639.36	336.907	0.34	-0.26	-0.21
14689.00	90.400	329.760	7867.07	6719.48	6190.42	2652.23	1748549.35	388166.68	39°33'44.3425"N	80°23'30.8089"W	6734.66	336.808	0.60	-0.45	-0.41
14784.00	90.220	329.590	7866.56	6814.32	6272.42	2700.20	1748501.39	388248.67	39°33'45.1481"N	80°23'31.4317"W	6828.93	336.709	0.26	-0.19	-0.18
14879.00	89.540	329.470	7866.76	6909.15	6354.30	2748.37	1748453.22	388330.55	39°33'45.9526"N	80°23'32.0571"W	6923.20	336.611	0.73	-0.72	-0.13
14974.00	89.690	329.690	7867.40	7003.98	6436.22	2796.47	1748405.12	388412.46	39°33'46.7575"N	80°23'32.6816"W	7017.49	336.516	0.28	0.16	0.23
15069.00	90.310	330.480	7867.40	7098.86	6518.56	2843.85	1748357.75	388494.80	39°33'47.5666"N	80°23'33.2970"W	7111.90	336.430	1.06	0.65	0.83
15164.00	90.370	330.460	7866.83	7193.77	6601.22	2890.67	1748310.93	388577.45	39°33'48.3789"N	80°23'33.9053"W	7206.39	336.351	0.07	0.06	-0.02
15259.00	90.150	330.410	7866.40	7288.68	6683.85	2937.54	1748264.05	388660.08	39°33'49.1909"N	80°23'34.5142"W	7300.89	336.275	0.24	-0.23	-0.05
15354.00	90.250	330.310	7866.07	7383.58	6766.42	2984.52	1748217.08	388742.64	39°33'50.0023"N	80°23'35.1246"W	7395.39	336.199	0.15	0.11	-0.11
15449.00	89.970	330.000	7865.89	7478.47	6848.82	3031.80	1748169.80	388825.04	39°33'50.8120"N	80°23'35.7377"W	7489.87	336.122	0.44	-0.29	-0.33
15544.00	90.150	330.020	7865.79	7573.34	6931.10	3079.29	1748122.32	388907.31	39°33'51.6205"N	80°23'36.3554"W	7584.34	336.046	0.19	0.19	0.02
15639.00	90.220	330.130	7865.48	7668.22	7013.43	3126.68	1748074.93	388989.64	39°33'52.4295"N	80°23'36.9710"W	7678.83	335.972	0.14	0.07	0.12
15734.00	90.220	330.270	7865.12	7763.11	7095.87	3173.89	1748027.72	389072.07	39°33'53.2396"N	80°23'37.5842"W	7773.35	335.902	0.15	0.00	0.15
15829.00	89.380	329.510	7865.45	7857.97	7178.05	3221.55	1747980.07	389154.25	39°33'54.0470"N	80°23'38.2031"W	7867.83	335.829	1.19	-0.88	-0.80
15925.00	89.880	330.240	7866.07	7953.83	7261.08	3269.73	1747933.89	389237.27	39°33'54.8629"N	80°23'38.8289"W	7963.32	335.758	0.92	0.52	0.76
16020.00	90.030	329.840	7866.14	8048.70	7343.39	3317.17	1747886.45	389319.57	39°33'55.6716"N	80°23'39.4451"W	8057.85	335.690	0.45	0.16	-0.42
16114.00	89.660	329.620	7866.40	8142.55	7424.57	3364.55	1747839.07	389401.75	39°33'56.4693"N	80°23'40.0604"W	8151.35	335.622	0.46	-0.39	-0.23
16209.00	89.720	329.500	7866.91	8237.38	7506.47	3412.68	1747791.94	389483.65	39°33'57.2740"N	80°23'40.6853"W	8245.82	335.552	0.14	0.06	-0.13
16304.00	89.600	329.820	7867.47	8332.23	7588.46	3460.67	1747744.96	389565.63	39°33'58.0795"N	80°23'41.3084"W	8340.32	335.485	0.36	-0.13	0.34
16400.00	90.580	329.210	7867.32	8428.05	7671.19	3509.37	1747697.26	389647.36	39°33'58.8923"N	80°23'41.9408"W	8435.81	335.417	1.20	1.02	-0.64
16495.00	89.820	330.510	7866.99	8522.91	7753.34	3557.07	1747649.57	389729.51	39°33'59.6995"N	80°23'42.5603"W	8530.36	335.355	1.59	-0.80	1.37



Actual Wellpath Report

Elliott 11H (L-003939) AWP Proj: 23242'
Page 8 of 12



REFERENCE WELLPATH IDENTIFICATION			
Operator	EQT PRODUCTION COMPANY	Well	Elliott 11H (L-003939)
Field	Marion	API	47-049-02503-00-00
Facility	Elliot Pad	Wellbore	Elliott 11H (L-003939) AWB
Slot	Slot 11		

WELLPATH DATA (252 stations)															
MD [ft]	Inclination [°]	Azimuth [°]	TVD [ft]	Vert Sect [ft]	North [ft]	East [ft]	Grid East [US ft]	Grid North [US ft]	Latitude	Longitude	Closure Dist [ft]	Closure Dir [°]	DLS [°/100ft]	Build Rate [°/100ft]	Turn Rate [°/100ft]
16590.00	90.030	330.380	7867.12	8617.82	7835.98	-3603.93	1747597.71	389812.14	39°34'0.5116"N	80°23'43.1691"W	8625.02	335.301	0.26	0.22	-0.14
16685.00	89.630	328.850	7867.40	8712.65	7917.93	-3651.98	1747549.66	389894.08	39°34'1.3167"N	80°23'43.7931"W	8719.55	335.239	1.66	0.42	-1.61
16781.00	90.180	330.180	7867.56	8808.47	8000.66	-3700.68	1747500.96	389976.80	39°34'2.1295"N	80°23'44.4254"W	8815.07	335.177	1.50	0.57	1.39
16876.00	90.650	330.180	7866.87	8903.36	8083.08	-3747.92	1747453.73	390059.22	39°34'2.9394"N	80°23'45.0391"W	8909.71	335.124	0.49	0.49	0.00
16971.00	90.220	328.650	7866.15	8998.17	8164.85	-3796.25	1747405.39	390140.99	39°34'3.7428"N	80°23'45.6667"W	9004.24	335.064	1.67	0.45	-1.61
17067.00	89.910	327.360	7866.04	9093.81	8246.27	-3847.12	1747354.53	390222.40	39°34'4.5424"N	80°23'46.3265"W	9099.52	334.990	1.38	0.32	-1.34
17162.00	90.950	330.480	7865.33	9188.56	8327.62	-3896.15	1747305.50	390303.75	39°34'5.3415"N	80°23'46.9630"W	9193.98	334.927	3.46	1.09	3.28
17257.00	89.600	330.620	7864.87	9283.47	8410.34	-3942.86	1747258.80	390386.46	39°34'6.1544"N	80°23'47.5699"W	9288.70	334.882	1.43	-1.42	0.15
17352.00	90.000	330.250	7865.20	9378.38	8492.97	-3997.73	1747211.93	390469.09	39°34'6.9664"N	80°23'48.1789"W	9383.42	334.837	0.57	0.42	-0.39
17447.00	90.460	330.770	7864.82	9473.29	8575.66	-4036.50	1747165.17	390551.77	39°34'7.7790"N	80°23'48.7866"W	9478.15	334.794	0.73	0.48	0.55
17542.00	89.050	330.340	7865.23	9568.20	8658.39	-4083.20	1747118.47	390634.49	39°34'8.5920"N	80°23'49.3934"W	9572.89	334.752	1.55	-1.48	-0.45
17636.00	90.150	329.450	7865.88	9662.06	8739.70	-4130.34	1747071.33	390715.81	39°34'9.3909"N	80°23'50.0058"W	9666.55	334.705	1.51	1.17	-0.95
17732.00	90.550	330.960	7865.30	9757.95	8823.01	-4178.04	1747023.63	390799.11	39°34'10.2095"N	80°23'50.6255"W	9762.25	334.661	1.63	0.42	1.57
17826.00	90.370	332.220	7864.54	9851.92	8905.68	-4222.76	1746978.91	390881.78	39°34'11.0221"N	80°23'51.2071"W	9856.11	334.631	1.35	-0.19	1.34
17922.00	89.880	332.190	7864.33	9947.91	8990.61	-4267.53	1746934.15	390966.69	39°34'11.8570"N	80°23'51.7895"W	9952.02	334.608	0.51	-0.51	-0.03
18017.00	89.230	328.930	7865.07	10042.81	9073.32	-4314.21	1746887.47	391049.41	39°34'12.6699"N	80°23'52.3962"W	10046.77	334.570	3.50	0.68	-3.43
18112.00	90.740	331.860	7865.10	10137.70	9155.91	-4361.14	1746840.54	391131.99	39°34'13.4814"N	80°23'53.0059"W	10141.51	334.531	3.47	1.59	3.08
18207.00	90.220	332.250	7864.30	10232.68	9239.83	-4405.66	1746796.03	391215.90	39°34'14.3064"N	80°23'53.5851"W	10236.42	334.508	0.68	0.55	0.41
18302.00	89.420	329.810	7864.60	10327.62	9322.94	-4451.67	1746750.02	391299.00	39°34'15.1231"N	80°23'54.1832"W	10331.24	334.476	2.70	0.84	2.57
18397.00	90.490	330.200	7864.67	10422.49	9405.21	-4499.16	1746702.53	391381.27	39°34'15.9316"N	80°23'54.8001"W	10425.95	334.435	1.20	1.13	0.41
18493.00	90.120	330.880	7864.16	10518.41	9488.80	-4546.37	1746655.32	391464.85	39°34'16.7529"N	80°23'55.4137"W	10521.73	334.399	0.81	-0.39	0.71
18588.00	89.970	330.040	7864.09	10613.32	9571.45	-4593.21	1746608.49	391547.50	39°34'17.5651"N	80°23'56.0223"W	10616.50	334.364	0.90	-0.16	-0.88
18684.00	89.140	329.570	7864.80	10705.17	9650.96	-4639.48	1746562.22	391627.01	39°34'18.3464"N	80°23'56.6233"W	10708.21	334.325	1.04	0.90	-0.51
18779.00	90.370	331.100	7865.21	10800.07	9733.50	-4686.49	1746515.21	391709.55	39°34'19.1575"N	80°23'57.2342"W	10802.98	334.290	2.07	1.29	1.61
18875.00	89.910	330.850	7864.98	10895.01	9816.57	-4732.59	1746469.12	391792.61	39°34'19.9739"N	80°23'57.8334"W	10897.82	334.261	0.55	-0.48	-0.26
18971.00	89.510	330.590	7865.46	10989.94	9899.43	-4779.05	1746422.66	391875.47	39°34'20.7882"N	80°23'58.4373"W	10992.64	334.231	0.50	0.42	-0.27
19067.00	90.150	330.930	7865.74	11084.86	9982.33	-4825.45	1746376.26	391958.36	39°34'21.6028"N	80°23'59.0404"W	11087.46	334.201	0.76	0.67	0.36
19163.00	90.060	331.940	7865.56	11179.83	10065.76	-4870.88	1746330.84	392041.79	39°34'22.4229"N	80°23'59.6311"W	11182.35	334.177	1.07	-0.09	1.06
19259.00	89.880	329.880	7865.61	11274.76	10148.78	-4917.06	1746284.65	392124.79	39°34'23.2387"N	80°24'0.2315"W	11277.20	334.150	2.18	-0.19	2.17
19355.00	90.520	330.780	7865.28	11369.66	10231.32	-4964.09	1746237.63	392207.33	39°34'24.0498"N	80°24'0.8426"W	11371.98	334.118	1.16	0.67	0.95



Actual Wellpath Report

Elliott 11H (L-003939) AWP Proj: 23242'

Page 9 of 12



REFERENCE WELLPATH IDENTIFICATION			
Operator	EQT PRODUCTION COMPANY	Well	Elliott 11H (L-003939)
Field	Marion	API	47-049-02503-00-00
Facility	Elliot Pad	Wellbore	Elliott 11H (L-003939) AWB
Slot	Slot 11		

WELLPATH DATA (252 stations)

MD [ft]	Inclination [°]	Azimuth [°]	TVD [ft]	Vert Sect [ft]	North [ft]	East [ft]	Grid East [US ft]	Grid North [US ft]	Latitude	Longitude	Closure Dist [ft]	Closure Dir [°]	DLS [°/100ft]	Build Rate [°/100ft]	Turn Rate [°/100ft]
19440.00	89.970	330.180	7864.88	11464.57	10313.98	-5010.89	1746190.83	392289.99	39°34'24.8621"N	80°24'1.4509"W	11466.79	334.088	0.86	-0.58	-0.63
19535.00	89.260	327.390	7865.51	11559.31	10395.22	-6060.12	1746141.60	392371.22	39°34'25.6601"N	80°24'2.0899"W	11561.38	334.044	3.03	-0.75	-2.94
19630.00	89.290	328.170	7866.72	11653.91	10475.58	-5110.77	1746090.96	392451.58	39°34'26.4493"N	80°24'2.7469"W	11655.81	333.993	0.82	0.03	0.82
19725.00	90.370	331.090	7867.00	11748.74	10557.54	-5158.79	1746042.94	392533.53	39°34'27.2544"N	80°24'3.3707"W	11750.52	333.958	3.28	1.14	3.07
19820.00	89.420	330.100	7867.17	11843.65	10640.30	-5205.43	1745996.30	392616.29	39°34'28.0677"N	80°24'3.9769"W	11845.36	333.931	1.44	-1.00	-1.04
19915.00	89.420	328.610	7868.13	11938.46	10722.02	-5253.85	1745947.88	392698.01	39°34'28.8706"N	80°24'4.6056"W	11940.05	333.895	1.57	0.00	-1.57
20010.00	89.380	328.700	7869.13	12033.19	10803.15	-5303.27	1745898.47	392779.13	39°34'29.6674"N	80°24'5.2471"W	12034.65	333.854	0.10	-0.04	0.09
20105.00	90.650	330.610	7869.10	12128.02	10885.13	-5351.26	1745850.48	392861.11	39°34'30.4729"N	80°24'5.8704"W	12129.39	333.821	2.41	1.34	2.01
20200.00	89.050	325.720	7869.35	12222.66	10965.81	-5401.35	1745800.39	392941.78	39°34'31.2653"N	80°24'6.5204"W	12223.90	333.777	5.42	-1.68	-5.15
20295.00	90.550	330.480	7869.68	12317.28	11046.44	-5451.54	1745750.21	393022.41	39°34'32.0571"N	80°24'7.1716"W	12318.41	333.733	5.25	1.58	5.01
20391.00	89.820	329.150	7869.37	12413.14	11129.42	-5499.81	1745701.95	393105.38	39°34'32.8724"N	80°24'7.9867"W	12414.18	333.703	1.58	-0.76	-1.39
20486.00	89.380	327.260	7870.04	12507.80	11210.16	-5549.86	1745651.90	393186.11	39°34'33.6653"N	80°24'8.4481"W	12508.74	333.661	2.04	-0.46	-1.99
20581.00	89.750	327.720	7870.76	12602.37	11290.27	-5600.91	1745600.85	393266.22	39°34'34.4520"N	80°24'9.1104"W	12603.19	333.615	0.62	0.39	0.48
20676.00	89.780	329.110	7871.15	12697.07	11371.19	-5650.67	1745551.09	393347.14	39°34'35.2468"N	80°24'9.7562"W	12697.80	333.576	1.46	0.03	1.46
20771.00	90.060	328.980	7871.28	12791.84	11452.66	-5699.53	1745502.23	393428.60	39°34'36.0471"N	80°24'10.3906"W	12792.50	333.542	0.32	0.29	-0.14
20867.00	89.780	327.980	7871.42	12887.55	11534.50	-5749.72	1745452.05	393510.43	39°34'36.8508"N	80°24'11.0420"W	12888.13	333.505	1.08	-0.29	-1.04
20962.00	90.150	328.510	7871.47	12982.23	11615.28	-5799.72	1745402.05	393591.21	39°34'37.6442"N	80°24'11.6909"W	12982.73	333.466	0.68	0.39	0.56
21057.00	90.310	328.770	7871.09	13076.96	11696.40	-5849.16	1745352.62	393672.32	39°34'38.4410"N	80°24'12.3326"W	13077.40	333.431	0.32	0.17	0.27
21152.00	90.580	329.680	7870.35	13171.75	11778.02	-5897.76	1745304.01	393753.94	39°34'39.2427"N	80°24'12.9638"W	13172.14	333.401	1.00	0.28	0.96
21247.00	89.450	329.680	7870.33	13266.59	11860.02	-5945.72	1745256.06	393835.94	39°34'40.0484"N	80°24'13.5868"W	13266.94	333.374	1.19	-1.19	0.00
21342.00	89.570	328.750	7871.14	13361.39	11941.63	-5994.34	1745207.44	393917.54	39°34'40.8501"N	80°24'14.2182"W	13361.69	333.345	0.99	0.13	-0.98
21437.00	89.940	328.450	7871.55	13456.11	12022.72	-6043.84	1745157.95	393998.62	39°34'41.6465"N	80°24'14.8607"W	13456.36	333.311	0.50	0.39	-0.32
21532.00	90.520	330.260	7871.17	13550.92	12104.45	-6092.26	1745109.53	394080.35	39°34'42.4494"N	80°24'15.4896"W	13551.13	333.284	2.00	0.61	1.91
21627.00	89.570	329.940	7871.09	13645.80	12186.80	-6139.61	1745062.18	394162.70	39°34'43.2586"N	80°24'16.1049"W	13645.99	333.261	1.06	-1.00	-0.34
21723.00	90.580	330.170	7870.97	13741.67	12269.98	-6187.53	1745014.26	394245.87	39°34'44.0759"N	80°24'16.7276"W	13741.84	333.239	1.08	1.05	-0.24
21818.00	89.940	328.990	7870.54	13836.50	12351.90	-6235.63	1744966.16	394327.79	39°34'44.8807"N	80°24'17.3524"W	13836.64	333.214	1.41	-0.67	-1.24
21913.00	89.510	328.290	7870.99	13931.23	12433.02	-6283.50	1744916.73	394408.90	39°34'45.6775"N	80°24'17.9941"W	13931.34	333.183	0.86	-0.45	-0.74
22008.00	90.430	329.630	7871.04	14026.00	12514.42	-6334.05	1744867.75	394490.29	39°34'46.4770"N	80°24'18.6302"W	14026.08	333.154	1.71	0.97	1.41
22103.00	90.000	330.630	7870.68	14120.88	12596.80	-6381.37	1744820.44	394572.67	39°34'47.2864"N	80°24'19.2450"W	14120.94	333.134	1.15	-0.45	1.05
22198.00	89.720	330.920	7870.92	14215.81	12679.70	-6427.75	1744774.06	394655.57	39°34'48.1011"N	80°24'19.8480"W	14215.86	333.118	0.42	-0.29	0.31



Actual Wellpath Report

Elliott 11H (L-003939) AWP Proj: 23242'
Page 10 of 12



REFERENCE WELLPATH IDENTIFICATION			
Operator	EQT PRODUCTION COMPANY	Well	Elliott 11H (L-003939)
Field	Marion	API	47-049-02503-00-00
Facility	Elliot Pad	Wellbore	Elliott 11H (L-003939) AWB
Slot	Slot 11		

WELLPATH DATA (252 stations) † = interpolated, ‡ = extrapolated station															
MD [ft]	Inclination [°]	Azimuth [°]	TVD [ft]	Vert Sect [ft]	North [ft]	East [ft]	Grid East [US ft]	Grid North [US ft]	Latitude	Longitude	Closure Dist [ft]	Closure Dir [°]	DLS [°/100ft]	Build Rate [°/100ft]	Turn Rate [°/100ft]
22292.00	90.060	332.010	7871.10	14309.78	12762.28	-6472.65	1744729.16	394738.14	39°34'48.9128"N	80°24'20.4321"W	14309.82	333.107	1.21	0.36	1.16
22387.00	89.720	329.340	7871.28	14440.69	12845.10	-6519.17	1744682.64	394820.96	39°34'49.7266"N	80°24'21.0369"W	14404.73	333.091	2.83	-0.36	-2.81
22482.00	89.480	330.580	7871.94	14499.56	12927.34	-6566.73	1744635.09	394903.19	39°34'50.5346"N	80°24'21.6548"W	14499.58	333.071	1.33	-0.25	1.31
22577.00	90.090	330.550	7872.30	14594.47	13010.07	-6613.41	1744588.40	394985.92	39°34'51.3476"N	80°24'22.2617"W	14594.49	333.054	0.64	0.64	-0.03
22672.00	89.140	325.840	7872.94	14689.11	13090.78	-6663.47	1744538.35	395066.62	39°34'52.1402"N	80°24'22.9113"W	14689.12	333.023	5.06	-1.00	-4.96
22767.00	89.880	326.300	7873.75	14783.42	13169.60	-6716.49	1744485.33	395145.44	39°34'52.9139"N	80°24'23.5986"W	14783.43	332.978	0.92	0.78	0.48
22862.00	89.970	327.410	7873.87	14877.88	13249.14	-6768.43	1744433.40	395224.97	39°34'53.6948"N	80°24'24.2722"W	14877.89	332.939	1.17	0.09	1.17
22956.00	89.600	330.890	7874.23	14971.66	13329.83	-6816.63	1744385.20	395305.66	39°34'54.4874"N	80°24'24.8981"W	14971.67	332.916	3.72	-0.39	3.70
23051.00	90.030	330.970	7874.53	15066.60	13412.86	-6862.79	1744339.05	395388.68	39°34'55.3034"N	80°24'25.4983"W	15066.61	332.903	0.46	0.45	0.08
23146.00	90.090	330.910	7874.44	15161.54	13495.90	-6908.93	1744292.91	395471.72	39°34'56.1194"N	80°24'26.0983"W	15161.55	332.891	0.09	0.06	-0.06
23217.00	89.170	330.290	7874.89	15232.48	13557.76	-6943.78	1744258.06	395533.57	39°34'56.7272"N	80°24'26.5514"W	15232.49	332.880	1.56	-1.30	-0.87
23242.00 ‡	89.170	330.290	7875.26	15257.45	13579.47	-6956.17	1744245.67	395555.28	39°34'56.9406"N	80°24'26.7124"W	15257.47	332.876	0.00	0.00	0.00

HOLE & CASING SECTIONS - Ref Wellbore: Elliott 11H (L-003939) AWB Ref Wellpath: Elliott 11H (L-003939) AWP Proj: 23242'									
String/Diameter	Start MD [ft]	End MD [ft]	Interval [ft]	Start TVD [ft]	End TVD [ft]	Start N/S [ft]	Start E/W [ft]	End N/S [ft]	End E/W [ft]
17.5h Open Hole	28.00	1041.00	1013.00	28.00	1041.00	0.00	0.00	-1.84	-0.37
13.375h Casing Surface	28.00	1041.00	1013.00	28.00	1041.00	0.00	0.00	-1.84	-0.37
12.25h Open Hole	1041.00	2525.00	1484.00	1041.00	2524.97	-1.84	-0.37	-9.37	-2.96
9.625h Casing Intermediate	28.00	2525.00	2497.00	28.00	2524.97	0.00	0.00	-9.37	-2.96
8.75h Open Hole	2525.00	7193.00	4668.00	2524.97	7105.83	-9.37	-2.96	77.81	77.565
8.5h Open Hole	7193.00	23242.00	16049.00	7105.83	7875.26	77.81	77.565	13579.47	-6956.17
5.5h Casing Production	28.00	23242.00	23214.00	28.00	7875.26	0.00	0.00	13579.47	-6956.17



Actual Wellpath Report

Elliott 11H (L-003939) AWP Proj: 23242'
Page 11 of 12



REFERENCE WELLPATH IDENTIFICATION			
Operator	EQT PRODUCTION COMPANY	Well	Elliott 11H (L-003939)
Field	Marion	API	47-049-02503-00-00
Facility	Elliot Pad	Wellbore	Elliott 11H (L-003939) AWB
Slot	Slot 11		

TARGETS								
Name	TVD [ft]	North [ft]	East [ft]	Grid East [US ft]	Grid North [US ft]	Latitude	Longitude	Shape
Elliott 11H (L-003939) BHL Rev-1	7847.00	13590.08	-6937.39	1744264.45	395565.89	39°34'57.0473"N	80°24'26.4740"W	point
Elliott 11H (L-003939) LP Rev-1	7847.00	689.51	555.31	1751756.70	382666.10	39°32'50.2908"N	80°22'49.1682"W	point

WELLPATH COMPOSITION - Ref Wellbore: Elliott 11H (L-003939) AWB Ref Wellpath: Elliott 11H (L-003939) AWP Proj: 23242'					
Start MD [ft]	End MD [ft]	Positional Uncertainty Model	Log Name/Comment	Wellbore	Survey Date
28.00	2534.00	Gyro data 2015 -C T+W R+ALC	01_Gyro data ContGyro <12.4 A'>(115'2534')	Elliott11H (L-003939)AWB	7/8/2021
2534.00	7070.00	OW SGMWD rev2 -Standard	02_SDIMWD <3.4'>(2534'2548'7070')	Elliott11H (L-003939)AWB	7/8/2021
7070.00	23242.00	OW SGMWD rev2 + IFR1 + MultiS tation Correction	03_BHATCurve +MagVARS <4.2'>(070')(177'23217')	Elliott11H (L-003939)AWB	7/25/2021



Actual Wellpath Report

Elliott 11H (L-003939) AWP Proj: 23242'
Page 12 of 12

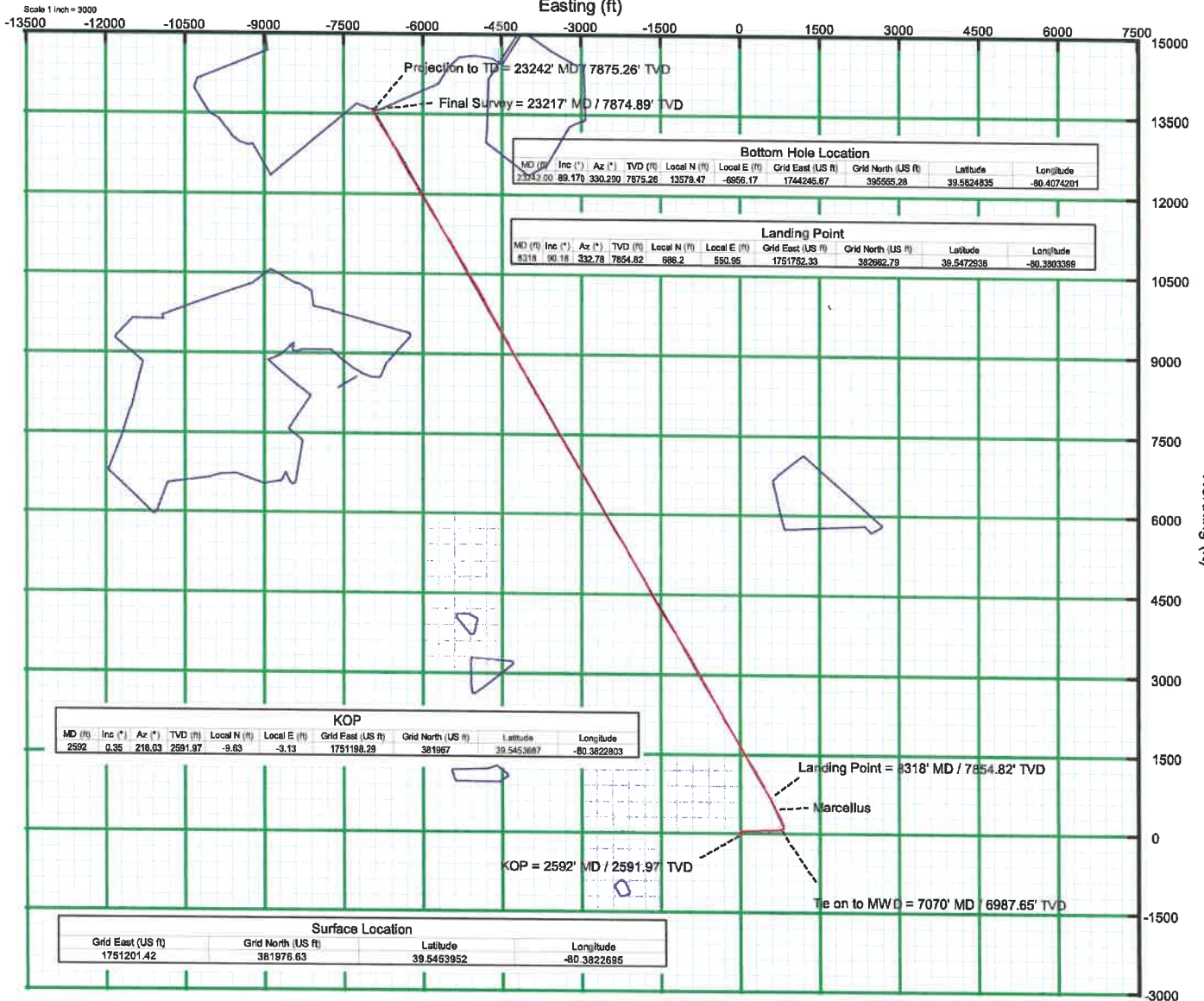
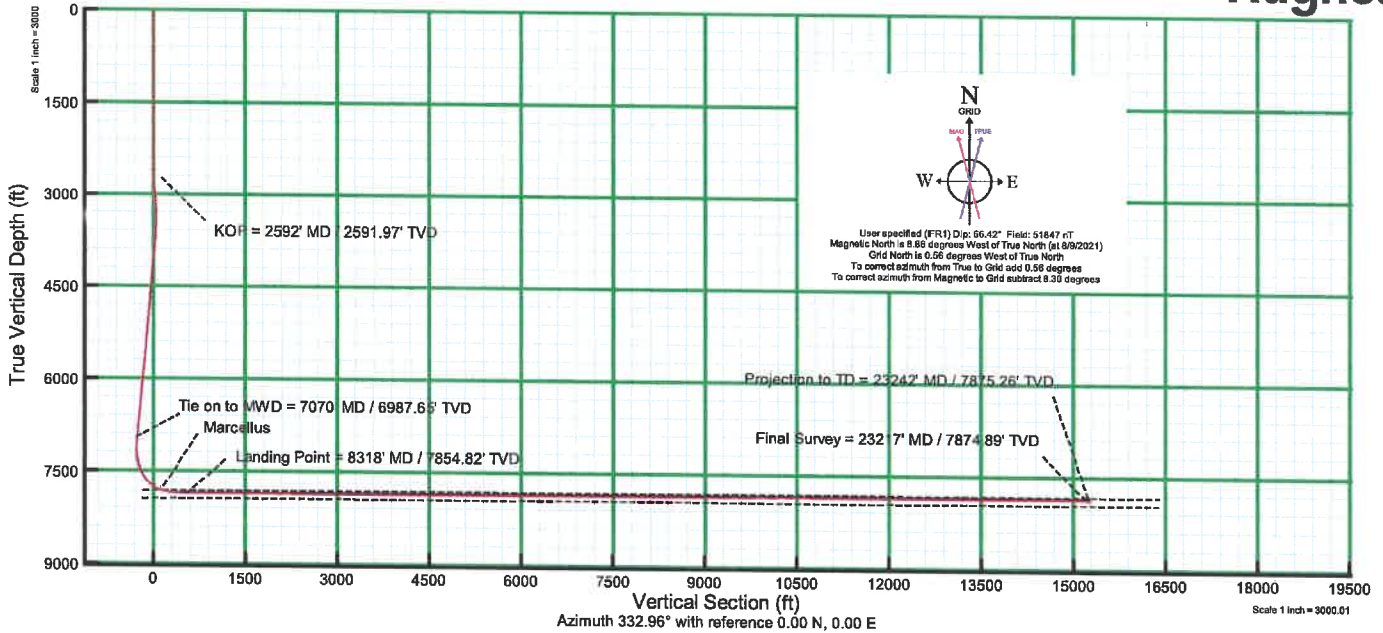


REFERENCE WELLPATH IDENTIFICATION			
Operator	EQT PRODUCTION COMPANY	Well	Elliott 11H (L-003939)
Field	Marion	API	47-049-02503-00-00
Facility	Elliot Pad	Wellbore	Elliott 11H (L-003939) AWB
Slot	Slot 11		

COMMENTS
<p>Wellpath general comments API 47-049-02503-0000 BH Job #: 110974161 Rig: Paterson 292 Duration: 7/27/21 - 7/30/21</p> <p>Gyro at C on tGyro <12.4 A">(115 '2534) SDIMWD <4.3 A">(2534)(2548 '7070) BH A TC u rve +M agVA RMSA <4.2">(070)(177 '23217) Projected MD atTD: 23242 '</p>



KB Elevation=1370 FT
 Ground Elevation=1342 FT
 All Survey Measurements were taken from KB Elevation



10/14/2022