



Actual Wellpath Report

Elliott 9H (L-003940) AWP Proj: 23260'
Page 1 of 12



REFERENCE WELLPATH IDENTIFICATION			
Operator	EQT PRODUCTION COMPANY	Well	Elliott 9H (L-003940)
Field	Marion	API	47-049-02498-00-00
Facility	Elliot Pad	Wellbore	Elliott 9H (L-003940) AWB
Slot	Slot 09		

REPORT SETUP INFORMATION			
Projection System	NAD27 / Lambert West Virginia SP, Northern Zone (4701), US feet	Software System	WellArchitect® 6.0
North Reference	Grid	User	Hilpthop
Scale	0.999942	Report Generated	7/27/2021 at 7:46:00 AM
Convergence at Slot	0.56° West	Database	WA_MPL_EASTERNUS_Defn

WELLPATH LOCATION						
	Local coordinates		Grid coordinates		Geographic coordinates	
	North[ft]	East[ft]	Easting[US ft]	Northing[US ft]	Latitude	Longitude
Slot Location	55.27	23.35	1751195.58	381962.82	39°32'43.2856"N	80°22'56.2430"W
Facility Reference Pt			1751172.23	381907.55	39°32'42.7371"N	80°22'56.5342"W
Field Reference Pt			1931053.01	433518.91	39°41'24.0000"N	79°44'42.0000"W

WELLPATH DATUM			
Curvature Method	Minimum curvature	Patterson 292 (RKB) to Facility Vertical Datum	1370.00ft
Horizontal Reference Pt	Slot	Patterson 292 (RKB) to Mean Sea Level	1370.00ft
Vertical Reference Pt	Patterson 292 (RKB)	Patterson 292 (RKB) to Ground Level at Slot (Slot 09)	28.00ft
MD Reference Pt	Patterson 292 (RKB)	Section Origin	N 0.00, E 0.00 ft
Field Vertical Reference	Mean Sea Level	Section Azimuth	329.25°



Actual Wellpath Report

Elliott 9H (L-003940) AWP Proj: 23260'
Page 2 of 12



REFERENCE WELLPATH IDENTIFICATION			
Operator	EQT PRODUCTION COMPANY	Well	Elliott 9H (L-003940)
Field	Marion	API	47-049-02498-00-00
Facility	Elliot Pad	Wellbore	Elliott 9H (L-003940) AWB
Slot	Slot 09		

WELLPATH DATA (256 stations) † = interpolated, ‡ = extrapolated station															
MD [ft]	Inclination [°]	Azimuth [°]	TVD [ft]	Vert Sect [ft]	North [ft]	East [ft]	Grid East [US ft]	Grid North [US ft]	Latitude	Longitude	Closure Dist [ft]	Closure Dir [°]	DLS [°/100ft]	Build Rate [°/100ft]	Turn Rate [°/100ft]
0.00	0.000	180.410	0.00	0.00	0.00	0.00	17 51195.58	38 1962.82	39°32'43.28"56"N	80°22'56.2430"W	0.00	0.000	0.00	0.00	0.00
28.00	0.000	180.410	28.00	0.00	0.00	0.00	17 51195.58	38 1962.82	39°32'43.28"56"N	80°22'56.2430"W	0.00	0.000	0.00	0.00	0.00
115.00	0.260	180.410	115.00	-0.17	-0.20	0.00	17 51195.58	38 1962.62	39°32'43.28"37"N	80°22'56.2430"W	0.20	180.410	0.30	0.30	0.00
215.00	0.250	167.890	215.00	0.57	-0.64	0.04	17 51195.62	38 1962.18	39°32'43.27"93"N	80°22'56.2424"W	0.64	176.166	0.06	-0.01	-42.52
315.00	0.190	250.840	315.00	-0.74	-0.91	-0.07	17 51195.51	38 1961.91	39°32'43.27"67"N	80°22'56.2438"W	0.91	184.303	0.29	-0.06	-82.95
415.00	0.170	235.240	415.00	-0.72	-1.04	-0.35	17 51195.23	38 1961.78	39°32'43.27"53"N	80°22'56.2473"W	1.10	198.362	0.05	-0.02	-45.60
515.00	0.030	175.920	515.00	-0.75	-1.16	-0.47	17 51195.11	38 1961.67	39°32'43.27"42"N	80°22'56.2488"W	1.25	201.999	0.16	-0.14	-59.32
615.00	0.220	214.090	615.00	-0.86	-1.34	-0.57	17 51195.01	38 1961.48	39°32'43.27"23"N	80°22'56.2502"W	1.46	203.128	0.20	0.19	-38.17
715.00	0.150	167.450	715.00	-1.07	-1.63	-0.65	17 51194.93	38 1961.19	39°32'43.26"95"N	80°22'56.2511"W	1.75	201.825	0.16	-0.07	-46.64
815.00	0.340	176.810	815.00	-1.45	-2.05	-0.61	17 51194.97	38 1960.77	39°32'43.26"53"N	80°22'56.2505"W	2.14	196.476	0.19	0.19	-9.36
895.00	0.310	167.750	894.99	-1.87	-2.50	-0.55	17 51195.03	38 1960.32	39°32'43.26"09"N	80°22'56.2497"W	2.56	192.355	0.07	-0.04	-11.33
1049.00	0.400	183.460	1048.99	-2.71	-3.44	-0.49	17 51195.09	38 1959.38	39°32'43.25"15"N	80°22'56.2489"W	3.48	188.124	0.09	0.06	10.20
1092.00	0.110	175.560	1091.99	-2.87	-3.63	-0.50	17 51195.08	38 1959.19	39°32'43.24"96"N	80°22'56.2489"W	3.67	187.793	0.68	-0.67	-48.37
1135.00	0.270	323.480	1134.99	-2.81	-3.59	-0.55	17 51195.03	38 1959.23	39°32'43.25"00"N	80°22'56.2496"W	3.64	188.771	0.86	0.37	344.00
1178.00	0.720	303.190	1177.99	-2.46	-3.36	-0.84	17 51194.74	38 1959.46	39°32'43.25"23"N	80°22'56.2533"W	3.47	194.032	1.11	1.05	-47.19
1222.00	1.360	321.820	1221.98	-1.70	-2.80	-1.39	17 51194.19	38 1960.02	39°32'43.25"88"N	80°22'56.2605"W	3.13	206.461	1.63	1.45	42.34
1265.00	1.620	327.120	1264.97	-0.58	-1.89	-2.04	17 51193.54	38 1960.93	39°32'43.26"67"N	80°22'56.2688"W	2.78	227.174	0.68	0.60	12.33
1308.00	2.290	316.220	1307.94	0.86	-0.76	-2.96	17 51192.62	38 1962.06	39°32'43.27"78"N	80°22'56.2808"W	3.06	255.615	1.78	1.56	-25.35
1351.00	2.670	320.830	1350.90	2.69	0.64	-4.19	17 51191.39	38 1963.46	39°32'43.29"15"N	80°22'56.2966"W	4.24	278.632	1.00	0.88	10.72
1394.00	3.070	321.320	1393.85	4.82	2.31	-5.54	17 51190.04	38 1965.13	39°32'43.30"79"N	80°22'56.3141"W	6.01	292.635	0.93	0.93	1.14
1437.00	2.920	316.460	1436.79	7.03	4.00	-7.02	17 51188.56	38 1966.82	39°32'43.3245"N	80°22'56.3331"W	8.08	299.709	0.69	-0.35	-41.30
1480.00	3.190	312.590	1479.73	9.24	5.61	-8.65	17 51188.69	38 1968.43	39°32'43.3402"N	80°22'56.3542"W	10.31	302.947	0.79	0.63	-9.00
1524.00	3.420	299.870	1523.66	11.56	7.09	-10.69	17 51184.89	38 1969.91	39°32'43.3546"N	80°22'56.3804"W	12.83	303.548	1.74	0.52	-28.91
1567.00	3.830	296.160	1566.57	13.88	8.36	-13.09	17 51182.49	38 1971.18	39°32'43.3670"N	80°22'56.4112"W	15.54	302.564	1.10	0.95	-8.63
1653.00	4.400	289.720	1652.35	18.83	10.74	-18.78	17 51176.80	38 1973.56	39°32'43.3899"N	80°22'56.4840"W	21.63	299.772	0.85	0.66	-7.49
1739.00	4.360	275.140	1738.10	23.29	12.15	-25.14	17 51170.44	38 1974.97	39°32'43.4032"N	80°22'56.5654"W	27.92	295.791	1.29	-0.05	-16.95
1825.00	3.720	265.370	1823.89	26.44	12.22	-31.18	17 51164.41	38 1975.03	39°32'43.4033"N	80°22'56.6425"W	33.48	291.396	1.09	-0.74	-41.36
1911.00	3.600	250.450	1909.71	28.19	11.09	-36.50	17 51159.08	38 1973.91	39°32'43.3916"N	80°22'56.7103"W	38.15	286.895	1.11	-0.14	-47.35
1997.00	3.120	250.360	1995.56	29.17	9.40	-41.25	17 51154.33	38 1972.22	39°32'43.3745"N	80°22'56.7707"W	42.31	282.833	0.56	-0.56	-0.10
2084.00	1.420	311.410	2082.50	30.65	9.31	-44.29	17 51151.29	38 1972.13	39°32'43.3734"N	80°22'56.8095"W	45.26	281.876	3.14	-1.95	-70.17



Actual Wellpath Report

Elliott 9H (L-003940) AWP Proj: 23260'
Page 3 of 12



REFERENCE WELLPATH IDENTIFICATION			
Operator	EQT PRODUCTION COMPANY	Well	Elliott 9H (L-003940)
Field	Marion	API	47-049-02498-00-00
Facility	Elliot Pad	Wellbore	Elliott 9H (L-003940) AWB
Slot	Slot 09		

WELLPATH DATA (256 stations)

MD [ft]	Inclination [°]	Azimuth [°]	TVD [ft]	Vert Sect [ft]	North [ft]	East [ft]	Grid East [US ft]	Grid North [US ft]	Latitude	Longitude	Closure Dist [ft]	Closure Dir [°]	DLS [°/100ft]	Build Rate [°/100ft]	Turn Rate [°/100ft]
2170.00	2.400	340.910	2168.46	33.43	11.72	45.68	17 51149.91	38 1974.54	39°32'43.3970"N	80°22'56.8275"W	47.16	284.391	1.58	1.14	34.30
2256.00	3.280	348.650	2254.35	37.51	15.83	46.75	17 51148.83	38 1978.65	39°32'43.4376"N	80°22'56.8417"W	49.36	288.711	1.11	1.02	9.00
2342.00	3.430	342.220	2340.20	42.34	20.70	48.02	17 51147.56	38 1983.51	39°32'43.4855"N	80°22'56.8585"W	52.29	293.316	0.47	0.17	7.48
2429.00	3.510	300.320	2427.06	47.21	24.52	-61.11	17 51144.47	38 1987.34	39°32'43.5230"N	80°22'56.8985"W	56.69	295.627	2.85	0.09	48.16
2470.00	3.530	282.950	2467.98	49.18	25.44	-53.43	17 51142.16	38 1988.25	39°32'43.5318"N	80°22'56.9282"W	59.17	295.458	2.59	0.05	42.37
2591.00	4.230	268.560	2588.71	53.94	26.16	-61.52	17 51134.06	38 1988.98	39°32'43.5382"N	80°22'57.0315"W	66.85	293.036	0.99	0.58	41.89
2678.00	3.330	265.870	2675.52	56.64	25.90	-67.25	17 51128.34	38 1988.71	39°32'43.5350"N	80°22'57.1046"W	72.06	291.061	1.05	4.03	-3.09
2764.00	2.230	263.420	2761.41	58.44	25.52	-71.40	17 51124.18	38 1988.34	39°32'43.5309"N	80°22'57.1576"W	75.83	289.671	1.29	4.28	-2.85
2850.00	1.530	292.850	2847.37	60.05	25.78	-74.12	17 51121.46	38 1988.60	39°32'43.5332"N	80°22'57.1924"W	78.48	289.177	1.36	0.81	34.22
2936.00	1.330	298.340	2933.34	61.83	26.70	-76.06	17 51119.53	38 1989.52	39°32'43.5421"N	80°22'57.2172"W	80.61	289.342	0.28	0.23	6.38
3023.00	1.200	261.300	3020.32	63.04	27.04	-77.85	17 51117.74	38 1989.86	39°32'43.5453"N	80°22'57.2401"W	82.41	289.154	0.93	0.15	42.57
3109.00	1.780	221.890	3106.29	62.98	25.91	-79.63	17 51115.96	38 1988.73	39°32'43.5339"N	80°22'57.2627"W	83.74	288.024	1.33	0.67	45.83
3195.00	2.860	200.010	3192.22	61.22	22.90	-81.25	17 51114.33	38 1985.72	39°32'43.5040"N	80°22'57.2831"W	84.42	285.739	1.60	1.26	25.44
3281.00	3.160	195.760	3278.11	58.24	18.60	-82.63	17 51112.95	38 1981.42	39°32'43.4614"N	80°22'57.3001"W	84.70	282.686	0.43	0.35	-4.94
3367.00	3.620	190.640	3363.96	54.57	13.65	-83.78	17 51111.81	38 1976.47	39°32'43.4124"N	80°22'57.3141"W	84.88	279.255	0.64	0.53	-6.95
3452.00	3.920	172.910	3448.77	49.89	8.13	-83.91	17 51111.67	38 1970.95	39°32'43.3578"N	80°22'57.3152"W	84.31	275.535	1.41	0.35	-20.86
3539.00	4.040	160.310	3535.57	44.16	2.29	-82.51	17 51113.07	38 1965.11	39°32'43.3003"N	80°22'57.2966"W	82.55	271.593	1.01	0.14	-44.48
3625.00	3.620	159.420	3621.37	38.52	-3.10	-80.54	17 51115.05	38 1959.72	39°32'43.2472"N	80°22'57.2707"W	80.60	267.796	0.49	-0.49	-1.03
3711.00	3.770	154.280	3707.20	33.03	8.19	-78.36	17 51117.23	38 1954.63	39°32'43.1971"N	80°22'57.2422"W	78.78	264.034	0.42	0.17	-6.98
3797.00	3.390	149.390	3793.03	27.67	-12.92	-75.84	17 51119.75	38 1949.90	39°32'43.1505"N	80°22'57.2094"W	76.93	260.328	0.57	0.44	-6.69
3884.00	3.560	146.580	3879.87	22.40	-17.39	-73.04	17 51122.55	38 1945.43	39°32'43.1066"N	80°22'57.1731"W	75.08	256.606	0.28	0.20	-3.23
3970.00	3.940	148.330	3965.68	16.78	-22.14	-70.02	17 51125.57	38 1940.69	39°32'43.0601"N	80°22'57.1340"W	73.43	252.456	0.46	0.44	2.03
4056.00	4.530	154.070	4051.45	10.44	-27.70	-66.98	17 51128.60	38 1935.12	39°32'43.0053"N	80°22'57.0945"W	72.48	247.529	0.84	0.69	6.67
4142.00	4.890	153.810	4137.16	3.40	-34.05	-63.88	17 51131.71	38 1928.77	39°32'42.9429"N	80°22'57.0541"W	72.39	241.942	0.42	0.42	0.30
4229.00	5.500	156.180	4223.80	-4.44	-41.19	-60.56	17 51135.03	38 1921.63	39°32'42.8727"N	80°22'57.0108"W	73.24	235.778	0.74	0.70	2.72
4315.00	6.040	155.340	4309.36	-13.03	-49.07	-57.01	17 51138.58	38 1913.75	39°32'42.7951"N	80°22'56.9645"W	75.22	229.277	0.64	0.63	0.98
4401.00	6.150	154.570	4394.88	-22.11	-57.34	-53.14	17 51142.44	38 1905.48	39°32'42.7137"N	80°22'56.9141"W	78.18	222.820	0.16	0.13	0.90
4488.00	5.880	146.190	4481.40	-31.20	-65.26	-48.66	17 51146.92	38 1897.57	39°32'42.6360"N	80°22'56.8559"W	81.40	216.710	1.05	0.31	9.63
4574.00	6.110	150.750	4566.93	-40.18	-72.91	-43.97	17 51151.61	38 1889.92	39°32'42.5608"N	80°22'56.7951"W	85.14	211.094	0.61	0.27	5.30
4660.00	6.670	149.030	4652.40	-49.75	-81.19	-39.16	17 51156.42	38 1881.64	39°32'42.4795"N	80°22'56.7327"W	90.14	205.753	0.69	0.65	2.00



Actual Wellpath Report

Elliott 9H (L-003940) AWP Proj: 23260'
Page 4 of 12



REFERENCE WELLPATH IDENTIFICATION			
Operator	EQT PRODUCTION COMPANY	Well	Elliott 9H (L-003940)
Field	Marion	API	47-049-02498-00-00
Facility	Elliott Pad	Wellbore	Elliott 9H (L-003940) AWB
Slot	Slot 09		

WELLPATH DATA (256 stations)																
MD [ft]	Inclination [°]	Azimuth [°]	TVD [ft]	Vert Sect [ft]	North [ft]	East [ft]	Grid East [US ft]	Grid North [US ft]	Latitude	Longitude	Closure Dist [ft]	Closure Dir [°]	DLS [°/100ft]	Build Rate [°/100ft]	Turn Rate [°/100ft]	
4747.00	6.650	149.290	4738.81	-59.84	498.5	-33.99	1751161.59	381872.98	39°32'42.3944"N	80°22'56.6656"W	96.06	200.723	0.04	-0.02	0.30	
4833.00	6.620	145.910	4824.23	-69.76	98.24	28.67	1751166.91	381864.59	39°32'42.3120"N	80°22'56.5967"W	102.33	196.270	0.46	-0.03	-3.93	
4919.00	6.670	150.890	4909.66	79.71	-106.70	23.46	1751172.12	381856.12	39°32'42.2288"N	80°22'56.5291"W	109.25	192.401	0.67	0.06	5.79	
4994.00	7.590	158.440	4984.08	88.95	-115.12	49.52	1751176.06	381847.71	39°32'42.1460"N	80°22'56.4778"W	116.76	189.625	1.75	1.23	10.07	
5080.00	7.730	162.700	5069.31	100.18	-125.92	15.72	1751179.87	381836.91	39°32'42.0396"N	80°22'56.4278"W	126.90	187.114	0.68	0.16	4.95	
5167.00	7.950	161.050	5155.50	111.76	-137.20	-12.02	1751183.56	381825.63	39°32'41.9285"N	80°22'56.3793"W	137.72	185.008	0.36	0.25	-1.90	
5262.00	7.650	161.580	5249.62	-124.37	-149.41	7.89	1751187.69	381813.42	39°32'41.8082"N	80°22'56.3250"W	149.62	183.023	0.32	-0.32	0.56	
5357.00	8.200	159.670	5343.71	-137.21	-161.76	-3.54	1751192.04	381801.07	39°32'41.6866"N	80°22'56.2679"W	161.80	181.253	0.64	0.58	2.01	
5452.00	8.460	162.700	5437.71	-150.67	-174.79	0.89	1751196.47	381788.04	39°32'41.5583"N	80°22'56.2097"W	174.79	179.707	0.54	0.27	3.19	
5548.00	8.430	166.720	5532.67	-164.25	-188.38	4.61	1751200.19	381774.45	39°32'41.4243"N	80°22'56.1606"W	188.44	178.598	0.62	-0.03	4.19	
5642.00	7.640	172.200	5625.75	-176.58	-201.28	7.04	1751202.62	381761.56	39°32'41.2971"N	80°22'56.1279"W	201.40	177.997	1.17	-0.84	5.83	
5737.00	6.470	167.160	5720.03	-187.49	-212.75	9.09	1751204.67	381750.08	39°32'41.1839"N	80°22'56.1003"W	212.95	177.554	1.39	-1.23	-5.31	
5832.00	5.680	166.980	5814.49	-197.06	-222.55	11.34	1751206.92	381740.28	39°32'41.0873"N	80°22'56.0704"W	222.84	177.084	0.83	-0.83	-0.19	
5928.00	4.710	173.640	5910.10	-205.17	-231.10	12.84	1751208.42	381731.74	39°32'41.0030"N	80°22'56.0501"W	231.45	176.819	1.19	-1.01	6.94	
6023.00	4.540	174.370	6004.79	-212.13	-238.71	13.64	1751209.22	381724.12	39°32'40.9278"N	80°22'56.0389"W	239.10	176.729	0.19	-0.18	0.77	
6118.00	4.580	169.730	6099.49	-219.09	-246.19	14.69	1751210.27	381716.65	39°32'40.8540"N	80°22'56.0247"W	246.63	176.585	0.39	0.04	-4.88	
6214.00	4.460	177.120	6195.19	-225.98	-253.69	15.56	1751211.14	381709.15	39°32'40.7800"N	80°22'56.0126"W	254.16	176.490	0.62	-0.12	7.70	
6309.00	5.170	179.580	6289.85	-232.94	-261.66	15.78	1751211.36	381701.18	39°32'40.7012"N	80°22'56.0088"W	262.13	176.550	0.78	0.75	2.59	
6404.00	6.570	175.590	6384.35	-241.50	-271.36	16.23	1751211.81	381691.48	39°32'40.6054"N	80°22'56.0019"W	271.84	176.578	1.53	1.47	-4.20	
6497.00	7.400	174.260	6476.66	-251.70	-282.62	17.23	1751212.81	381680.22	39°32'40.4942"N	80°22'55.9876"W	283.15	176.510	0.91	0.89	-4.43	
6592.00	7.590	170.050	6570.85	-263.11	-294.89	18.93	1751214.51	381667.95	39°32'40.3731"N	80°22'55.9644"W	295.49	176.327	0.61	0.20	-4.43	
6688.00	7.780	168.190	6664.01	-274.93	-307.23	21.30	1751216.88	381655.61	39°32'40.2514"N	80°22'55.9326"W	307.97	176.033	0.33	0.20	-1.98	
6781.00	7.520	163.010	6758.16	-287.05	-319.47	24.44	1751220.02	381643.37	39°32'40.1307"N	80°22'55.8910"W	320.40	175.626	0.78	-0.27	-5.45	
6876.00	6.100	158.720	6852.49	-298.07	-330.12	28.09	1751223.66	381632.72	39°32'40.0258"N	80°22'55.8431"W	331.31	175.137	1.59	-1.49	-4.52	
6971.00	6.780	160.890	6946.89	-308.54	-340.12	31.75	1751227.33	381622.72	39°32'39.9273"N	80°22'55.7951"W	341.60	174.666	0.76	0.72	2.28	
7029.00	7.250	160.600	7004.46	-315.48	-346.81	34.09	1751229.67	381616.03	39°32'39.8155"N	80°22'55.7644"W	348.48	174.386	0.81	0.81	-0.50	
7080.00	8.000	158.440	7055.01	-322.14	-353.14	36.46	1751232.04	381609.70	39°32'39.7991"N	80°22'55.7333"W	355.02	174.105	1.57	1.47	-4.24	
7174.00	2.540	156.190	7148.57	-330.67	-361.14	39.71	1751235.29	381601.70	39°32'39.7204"N	80°22'55.6909"W	363.32	173.725	5.81	-5.81	-2.39	
7269.00	8.150	349.870	7243.32	-326.44	-356.42	39.37	1751234.95	381606.42	39°32'39.6700"N	80°22'55.6957"W	358.59	173.696	11.19	5.91	-17.507	
7365.00	15.600	337.480	7337.21	-307.27	-337.77	33.22	1751228.80	381625.07	39°32'39.9507"N	80°22'55.7766"W	339.40	174.382	8.16	7.76	-12.91	



Actual Wellpath Report

Elliott 9H (L-003940) AWP Proj: 23260'
Page 5 of 12



REFERENCE WELLPATH IDENTIFICATION			
Operator	EQT PRODUCTION COMPANY	Well	Elliott 9H (L-003940)
Field	Marion	API	47-049-02498-00-00
Facility	Elliott Pad	Wellbore	Elliott 9H (L-003940) AWB
Slot	Slot 09		

WELLPATH DATA (256 stations)

MD [ft]	Inclination [°]	Azimuth [°]	TVD [ft]	Vert Sect [ft]	North [ft]	East [ft]	Grid East [US ft]	Grid North [US ft]	Latitude	Longitude	Closure Dist [ft]	Closure Dir [°]	DLS [°/100ft]	Buidl Rate [°/100ft]	Turn Rate [°/100ft]
7460.00	25.110	325.100	7426.22	274.43	-309.36	16.75	1751212.33	381653.48	39°32'40.2299"N	80°22'55.9904"W	309.81	176.900	10.94	10.01	43.03
7555.00	34.090	326.770	7508.74	227.63	270.48	-9.42	1751186.16	381692.36	39°32'40.6116"N	80°22'56.3294"W	270.64	181.995	9.49	9.45	1.76
7650.00	42.030	327.500	7583.48	-169.15	221.31	41.15	1751154.43	381741.52	39°32'41.0945"N	80°22'56.7405"W	225.10	190.533	8.37	8.36	0.77
7745.00	48.700	327.980	7650.19	-401.61	-164.17	77.20	1751118.39	381798.66	39°32'41.6557"N	80°22'57.2078"W	181.41	205.185	7.03	7.02	0.51
7839.00	54.980	328.830	7708.24	27.75	-101.23	-115.88	1751079.71	381861.60	39°32'42.2739"N	80°22'57.7095"W	153.87	228.861	6.72	6.68	0.90
7935.00	62.490	328.510	7758.02	54.25	-31.19	-158.53	1751037.06	381931.63	39°32'42.9619"N	80°22'58.2626"W	161.57	258.868	7.83	7.82	-0.33
8030.00	70.610	328.810	7795.80	141.32	43.19	203.81	1750991.78	382006.00	39°32'43.6926"N	80°22'58.8500"W	208.34	281.964	8.55	8.55	0.32
8125.00	78.600	328.740	7821.00	232.84	121.45	251.26	1750944.34	382084.26	39°32'44.4614"N	80°22'59.4654"W	279.07	295.797	8.41	8.41	-0.07
8220.00	83.000	328.700	7836.18	326.59	201.57	299.94	1750895.66	382164.38	39°32'45.2486"N	80°23'00.9688"W	361.38	303.903	4.63	4.63	-0.04
8315.00	83.090	328.650	7847.69	420.88	282.13	-348.96	1750846.64	382244.93	39°32'46.0399"N	80°23'01.3271"W	448.74	308.955	0.11	0.09	-0.05
8411.00	89.320	328.840	7854.04	516.62	363.97	-398.64	1750796.97	382326.77	39°32'46.8440"N	80°23'1.3771"W	539.80	312.398	6.49	6.49	0.20
8506.00	89.690	329.860	7854.86	611.62	445.70	447.06	1750748.54	382408.49	39°32'47.6469"N	80°23'2.0055"W	631.28	314.912	1.14	0.39	1.07
8601.00	89.660	329.140	7855.40	706.61	527.55	495.28	1750700.33	382490.34	39°32'48.4512"N	80°23'2.6312"W	723.61	316.807	0.76	-0.03	-0.76
8696.00	89.820	328.430	7855.83	801.61	608.80	-644.51	1750651.10	382571.58	39°32'49.2493"N	80°23'3.2699"W	816.78	318.190	0.77	0.17	-0.75
8792.00	90.800	324.470	7855.31	897.47	688.79	-697.56	1750598.06	382651.56	39°32'50.0347"N	80°23'3.9570"W	911.87	319.057	4.25	1.02	-4.13
8887.00	90.000	323.570	7854.64	992.07	765.66	-653.37	1750542.25	382728.43	39°32'50.7890"N	80°23'4.6791"W	1006.54	319.525	1.27	-0.84	-0.95
8982.00	89.570	325.740	7855.00	1086.76	843.14	708.32	1750487.30	382805.91	39°32'51.5494"N	80°23'5.3903"W	1101.18	319.967	2.33	-0.45	2.28
9077.00	89.260	329.480	7855.97	1181.70	923.34	759.20	1750436.43	382886.11	39°32'52.3370"N	80°23'6.0499"W	1195.39	320.572	3.95	-0.33	3.94
9172.00	88.650	329.220	7857.70	1276.68	1005.06	807.62	1750388.01	382967.82	39°32'53.1399"N	80°23'6.6782"W	1289.34	321.216	0.70	-0.64	-0.27
9267.00	89.570	332.220	7859.18	1371.63	1087.90	854.07	1750341.56	383050.66	39°32'53.9541"N	80°23'7.2816"W	1383.10	321.866	3.30	0.97	3.16
9362.00	89.480	331.900	7859.97	1466.51	1171.82	898.58	1750297.05	383134.57	39°32'54.7791"N	80°23'7.8603"W	1476.69	322.518	0.35	-0.09	-0.34
9457.00	89.690	331.820	7860.66	1561.41	1255.59	943.38	1750252.25	383218.34	39°32'55.6026"N	80°23'8.4428"W	1570.51	323.081	0.24	0.22	-0.08
9553.00	89.690	332.270	7861.17	1657.30	1340.39	988.39	1750207.25	383303.13	39°32'56.4363"N	80°23'9.0279"W	1665.40	323.595	0.47	0.00	0.47
9648.00	89.600	332.380	7861.76	1752.16	1424.52	-1032.51	1750163.13	383387.25	39°32'57.2634"N	80°23'9.6017"W	1759.36	324.065	0.15	-0.09	0.12
9743.00	89.600	333.080	7862.43	1846.98	1508.96	-1076.04	1750119.61	383471.69	39°32'58.0937"N	80°23'10.1680"W	1853.32	324.507	0.74	0.00	0.74
9838.00	89.780	332.970	7862.94	1941.77	1593.62	-1119.13	1750076.52	383556.35	39°32'58.9262"N	80°23'10.7287"W	1947.33	324.921	0.22	0.19	-0.12
9934.00	89.570	331.530	7863.49	2037.64	1678.58	-1163.82	1750031.83	383641.30	39°32'59.7614"N	80°23'11.3100"W	2042.57	325.265	1.52	-0.22	-1.50
10028.00	89.690	330.060	7864.09	2131.60	1760.62	-1209.69	1749985.97	383723.34	39°33'00.5678"N	80°23'11.9058"W	2136.15	325.508	1.57	0.13	-1.56
10123.00	90.060	330.660	7864.30	2226.58	1843.19	-1256.67	1749938.99	383805.90	39°33'1.3792"N	80°23'12.5159"W	2230.82	325.714	0.74	0.39	0.63
10219.00	89.820	329.180	7864.40	2322.57	1926.26	-1304.78	1749890.87	383888.97	39°33'2.1955"N	80°23'13.1406"W	2326.57	325.888	1.56	-0.25	-1.54



Actual Wellpath Report

Elliott 9H (L-003940) AWP Proj: 23260'
Page 6 of 12



REFERENCE WELLPATH IDENTIFICATION			
Operator	EQT PRODUCTION COMPANY	Well	Elliott 9H (L-003940)
Field	Marion	API	47-049-02498-00-00
Facility	Elliot Pad	Wellbore	Elliott 9H (L-003940) AWB
Slot	Slot 09		

WELLPATH DATA (256 stations)															
MD [ft]	Inclination [°]	Azimuth [°]	TVD [ft]	Vert Sect [ft]	North [ft]	East [ft]	Grid East [US ft]	Grid North [US ft]	Latitude	Longitude	Closure Dist [ft]	Closure Dir [°]	DLS [°/100ft]	Build Rate [°/100ft]	Turn Rate [°/100ft]
10314.00	89.570	328.760	7864.91	2417.57	2007.67	-4353.75	17498.41.91	383970.36	39°33'2.9952"N	80°23'13.7760"W	2421.44	326.008	0.51	-0.26	-0.44
10409.00	89.970	330.690	7865.29	2512.56	2089.70	-4401.65	1749794.02	384052.40	39°33'3.8013"N	80°23'14.3977"W	2516.24	326.149	2.07	0.42	2.03
10504.00	89.910	329.800	7865.39	2607.54	2172.18	-4448.79	1749746.87	384134.87	39°33'4.6118"N	80°23'15.0099"W	2611.01	326.298	0.94	-0.06	-0.94
10599.00	89.880	330.270	7865.56	2702.53	2254.48	-4496.24	1749699.43	384217.16	39°33'5.4205"N	80°23'15.6260"W	2705.81	326.429	0.50	-0.03	-0.49
10694.00	89.850	329.930	7865.78	2797.52	2336.83	-4543.60	1749652.07	384299.51	39°33'6.2298"N	80°23'16.2410"W	2800.62	326.553	0.36	-0.03	-0.36
10789.00	89.720	329.760	7866.14	2892.52	2418.98	-4591.32	1749604.35	384381.65	39°33'7.0369"N	80°23'16.8605"W	2895.47	326.661	0.23	-0.14	-0.18
10884.00	90.180	330.290	7866.22	2987.51	2501.27	-4638.78	1749556.89	384463.94	39°33'7.8456"N	80°23'17.4768"W	2990.31	326.768	0.74	0.48	0.56
10979.00	89.910	329.870	7866.15	3082.50	2583.61	-4686.17	1749509.51	384546.27	39°33'8.6547"N	80°23'18.0921"W	3085.16	326.870	0.53	-0.28	-0.44
11074.00	89.880	329.790	7866.32	3177.49	2665.74	-4733.91	1749461.77	384628.40	39°33'9.4617"N	80°23'18.7120"W	3180.03	326.958	0.09	-0.03	-0.08
11170.00	89.940	330.660	7866.47	3273.48	2749.06	-4781.59	1749414.10	384711.72	39°33'10.2805"N	80°23'19.3311"W	3275.88	327.054	0.91	0.06	0.91
11265.00	89.780	331.860	7866.71	3368.42	2832.36	-4827.26	1749368.43	384795.01	39°33'11.0992"N	80°23'19.9247"W	3370.63	327.172	1.27	-0.17	1.26
11360.00	89.820	332.510	7867.04	3463.29	2916.38	-4871.59	1749324.10	384879.03	39°33'11.9253"N	80°23'20.5012"W	3465.28	327.310	0.69	0.04	0.68
11455.00	90.490	330.590	7866.78	3558.21	2999.90	-4916.85	1749278.85	384962.54	39°33'12.7463"N	80°23'21.0895"W	3560.02	327.423	2.14	0.71	2.02
11550.00	90.770	331.100	7865.74	3653.16	3082.86	-4963.13	1749232.57	385045.50	39°33'13.5616"N	80°23'21.6908"W	3654.85	327.512	0.61	0.29	0.54
11645.00	90.550	329.940	7864.64	3748.13	3165.56	-5009.87	1749185.83	385128.19	39°33'14.3743"N	80°23'22.2980"W	3749.71	327.588	1.24	-0.23	-4.22
11740.00	89.660	328.650	7864.47	3843.13	3247.24	-5058.38	1749137.32	385209.86	39°33'15.1767"N	80°23'22.9276"W	3844.67	327.630	1.65	-0.94	-1.36
11836.00	89.780	329.750	7864.94	3939.13	3329.69	-5107.54	1749088.17	385292.31	39°33'15.9868"N	80°23'23.5655"W	3940.63	327.668	1.15	0.12	1.15
11931.00	90.280	330.190	7864.89	4034.12	3411.94	-5155.08	1749040.63	385374.55	39°33'16.7950"N	80°23'24.1828"W	4035.55	327.722	0.70	0.53	0.46
12026.00	90.000	329.760	7864.66	4129.11	3494.19	-5202.61	1748993.10	385456.80	39°33'17.6032"N	80°23'24.8001"W	4130.48	327.774	0.54	-0.29	-0.45
12121.00	90.650	330.670	7864.12	4224.09	3576.64	-5249.80	1748945.91	385539.24	39°33'18.4134"N	80°23'25.4129"W	4225.39	327.829	1.18	0.68	0.96
12216.00	90.090	330.920	7863.50	4319.06	3659.56	-5296.16	1748899.56	385622.16	39°33'19.2284"N	80°23'26.0152"W	4320.27	327.894	0.65	-0.59	0.26
12311.00	90.120	329.510	7863.33	4414.04	3742.01	-5343.35	1748852.38	385704.60	39°33'20.0386"N	80°23'26.6211"W	4415.19	327.944	1.48	0.03	-4.48
12406.00	89.780	328.050	7863.41	4509.04	3823.25	-5392.59	1748803.14	385787.58	39°33'20.8366"N	80°23'27.2260"W	4510.18	327.962	1.58	-0.36	-4.54
12501.00	90.250	328.620	7863.39	4604.02	3904.10	-5442.46	1748753.27	385870.69	39°33'21.6308"N	80°23'27.9138"W	4605.17	327.969	0.78	0.49	0.60
12596.00	89.820	328.550	7863.33	4699.02	3985.18	-5491.97	1748703.76	385953.76	39°33'22.4272"N	80°23'28.5563"W	4700.17	327.982	0.46	-0.45	-0.07
12691.00	90.220	330.100	7863.30	4794.01	4066.88	-5540.44	1748655.30	386036.86	39°33'23.2299"N	80°23'29.1853"W	4795.14	328.008	1.69	0.42	1.63
12786.00	90.150	331.800	7862.99	4888.97	4149.93	-5589.32	1748607.17	386119.97	39°33'24.0461"N	80°23'29.8477"W	4890.01	328.066	1.79	-0.07	1.79
12881.00	90.220	333.240	7862.68	4983.81	4234.21	-5638.40	1748559.34	386203.08	39°33'24.8747"N	80°23'30.5550"W	4984.73	328.150	1.52	0.07	1.52
12976.00	90.400	333.360	7862.17	5078.57	4319.08	-5687.30	1748511.66	386286.14	39°33'25.7093"N	80°23'31.3107"W	5079.35	328.247	0.23	0.19	0.13
13071.00	90.030	332.300	7861.81	5173.38	4403.59	-5736.46	1748463.92	386369.15	39°33'26.5403"N	80°23'32.1153"W	5174.05	328.331	1.18	-0.39	-4.12



Actual Wellpath Report

Elliott 9H (L-003940) AWP Proj: 23260'
Page 7 of 12



REFERENCE WELLPATH IDENTIFICATION			
Operator	EQT PRODUCTION COMPANY	Well	Elliott 9H (L-003940)
Field	Marion	API	47-049-02498-00-00
Facility	Elliot Pad	Wellbore	Elliott 9H (L-003940) AWB
Slot	Slot 09		

WELLPATH DATA (256 stations)																
MD [ft]	Inclination [°]	Azimuth [°]	TVD [ft]	Vert Sect [ft]	North [ft]	East [ft]	Grid East [US ft]	Grid North [US ft]	Latitude	Longitude	Closure Dist [ft]	Closure Dir [°]	DLS [°/100ft]	Build Rate [°/100ft]	Turn Rate [°/100ft]	
13166.00	90.310	333.250	7861.53	5268.20	4488.07	2759.92	1748435.82	386450.62	39°33'27.3708"N	80°23'32.0408"W	5268.77	328.411	1.04	0.29	1.00	
13261.00	90.090	332.780	7861.20	5363.00	4572.72	2803.03	1748392.72	386535.27	39°33'28.2032"N	80°23'32.6019"W	5363.47	328.492	0.55	-0.23	-0.49	
13355.00	89.720	328.010	7861.35	5456.95	4654.43	2849.45	1748346.30	386616.97	39°33'29.0062"N	80°23'33.2049"W	5457.39	328.525	5.09	-0.39	-5.07	
13449.00	91.080	328.250	7860.70	5550.93	4734.25	2899.08	1748296.67	386696.79	39°33'29.7902"N	80°23'33.8486"W	5551.38	328.518	1.47	1.45	0.26	
13544.00	91.110	329.210	7858.88	5645.91	4815.44	2948.39	1748247.37	386777.97	39°33'30.5877"N	80°23'34.4884"W	5646.36	328.522	1.01	0.03	1.01	
13639.00	90.370	326.490	7857.65	5740.86	4895.85	2998.93	1748196.83	386858.38	39°33'31.3774"N	80°23'35.1439"W	5741.34	328.511	2.97	-0.78	-2.86	
13735.00	89.970	328.130	7857.37	5836.80	4976.64	3050.78	1748144.99	386939.16	39°33'32.1708"N	80°23'35.8161"W	5837.31	328.491	1.76	-0.42	1.71	
13830.00	90.310	328.550	7857.14	5931.79	5057.51	3100.64	1748095.13	387020.02	39°33'32.9650"N	80°23'36.4629"W	5932.31	328.489	0.57	0.36	0.44	
13925.00	90.090	326.420	7856.81	6026.74	5137.61	3151.70	1748044.07	387100.12	39°33'33.7516"N	80°23'37.1250"W	6027.29	328.473	2.25	-0.23	-2.24	
14021.00	90.400	327.840	7856.40	6122.67	5218.24	3203.80	1747991.97	387180.74	39°33'34.5433"N	80°23'37.8004"W	6123.26	328.452	1.51	0.32	1.48	
14115.00	89.970	324.330	7856.09	6216.51	5296.23	3256.24	1747939.54	387258.73	39°33'35.3090"N	80°23'38.4798"W	6217.17	328.416	3.76	-0.46	-3.73	
14210.00	89.970	326.470	7856.14	6311.29	5374.43	3310.18	1747888.560	387336.92	39°33'36.0765"N	80°23'39.1784"W	6312.03	328.371	2.25	0.00	2.25	
14306.00	89.080	325.160	7856.94	6407.11	5453.83	3364.12	1747831.66	387416.33	39°33'36.8559"N	80°23'39.8771"W	6407.93	328.332	1.65	-0.93	-1.36	
14400.00	90.340	330.640	7857.41	6501.05	5533.43	3414.05	1747781.74	387495.92	39°33'37.6376"N	80°23'40.5247"W	6501.89	328.326	5.98	1.34	5.83	
14496.00	89.970	329.870	7857.15	6597.03	5616.78	3461.68	1747734.11	387579.26	39°33'38.4567"N	80°23'41.1434"W	6597.84	328.354	0.89	-0.39	-0.80	
14591.00	89.970	329.840	7857.20	6692.02	5698.93	3509.39	1747686.41	387661.41	39°33'39.2639"N	80°23'41.7629"W	6692.80	328.375	0.03	0.00	-0.03	
14686.00	90.520	330.770	7856.80	6787.01	5781.45	3556.45	1747639.35	387743.93	39°33'40.0748"N	80°23'42.3743"W	6787.75	328.402	1.14	0.58	0.98	
14781.00	89.910	330.710	7856.44	6881.97	5864.33	3602.88	1747592.92	387826.80	39°33'40.8893"N	80°23'42.9776"W	6882.67	328.435	0.65	-0.64	-0.06	
14876.00	89.570	329.020	7856.87	6976.96	5946.49	3650.57	1747545.23	387908.95	39°33'41.6965"N	80°23'43.5970"W	6977.64	328.454	1.81	-0.36	-1.78	
14971.00	90.250	330.020	7857.02	7071.96	6028.36	3698.76	1747497.05	387990.82	39°33'42.5009"N	80°23'44.2226"W	7072.62	328.468	1.27	0.72	1.05	
15066.00	89.820	329.970	7856.96	7166.95	6110.63	3746.26	1747449.54	388073.08	39°33'43.3092"N	80°23'44.8396"W	7167.58	328.489	0.46	-0.45	-0.05	
15161.00	90.250	330.590	7856.91	7261.93	6193.13	3793.36	1747402.45	388155.58	39°33'44.1199"N	80°23'45.4515"W	7262.54	328.512	0.79	0.45	0.65	
15257.00	89.850	330.220	7856.82	7357.91	6276.61	3840.77	1747355.04	388239.05	39°33'44.9402"N	80°23'46.0674"W	7358.49	328.537	0.57	-0.42	-0.39	
15351.00	89.660	330.080	7857.22	7451.90	6358.13	3887.56	1747308.26	388320.57	39°33'45.7414"N	80°23'46.6751"W	7452.45	328.557	0.25	-0.20	-0.15	
15447.00	89.600	329.080	7857.84	7547.90	6440.92	3936.16	1747259.65	388403.35	39°33'46.5547"N	80°23'47.3063"W	7548.43	328.570	1.04	-0.06	-1.04	
15542.00	89.600	330.240	7858.51	7642.89	6522.90	3984.15	1747211.67	388485.33	39°33'47.3602"N	80°23'47.9294"W	7643.41	328.584	1.22	0.00	1.22	
15637.00	90.460	331.110	7858.46	7737.86	6605.73	4030.68	1747165.15	388568.15	39°33'48.1741"N	80°23'48.5340"W	7738.34	328.609	1.29	0.91	0.92	
15732.00	89.110	329.810	7858.81	7832.83	6688.37	4077.51	1747118.31	388650.79	39°33'48.9863"N	80°23'49.1425"W	7833.29	328.632	1.97	-1.42	-1.37	
15827.00	89.540	329.930	7859.93	7927.82	6770.53	4125.20	1747070.63	388732.94	39°33'49.7935"N	80°23'49.7618"W	7928.26	328.647	0.47	0.45	0.13	
15922.00	90.060	330.690	7860.26	8022.80	6853.06	4172.25	1747023.58	388815.46	39°33'50.6045"N	80°23'50.3731"W	8023.22	328.666	0.97	0.55	0.80	



Actual Wellpath Report

Elliott 9H (L-003940) AWP Proj: 23260'
Page 8 of 12



REFERENCE WELLPATH IDENTIFICATION			
Operator	EQT PRODUCTION COMPANY	Well	Elliott 9H (L-003940)
Field	Marion	API	47-049-02498-00-00
Facility	Elliott Pad	Wellbore	Elliott 9H (L-003940) AWB
Slot	Slot 09		

WELLPATH DATA (256 stations)															
MD [ft]	Inclination [°]	Azimuth [°]	TVD [ft]	Vert Sect [ft]	North [ft]	East [ft]	Grid East [US ft]	Grid North [US ft]	Latitude	Longitude	Closure Dist [ft]	Closure Dir [°]	DLS [°/100ft]	Build Rate [°/100ft]	Turn Rate [°/100ft]
16018.00	89.750	330.000	7860.42	8118.79	6936.48	4219.75	174697.609	388898.88	39°33'51.4243"N	80°23'50.9902"W	8119.18	328.686	0.79	-0.32	-0.72
16112.00	90.680	331.960	7860.07	8212.74	7018.68	4265.34	1746930.49	388981.07	39°33'52.2321"N	80°23'51.5828"W	8213.10	328.712	2.31	0.99	2.09
16302.00	90.310	331.150	7858.43	8402.57	7185.73	4355.84	1746840.00	389148.12	39°33'53.8741"N	80°23'52.7596"W	8402.86	328.777	0.47	-0.19	-0.43
16397.00	89.750	330.150	7858.38	8497.54	7268.53	4402.40	1746793.44	389230.92	39°33'54.6878"N	80°23'53.3647"W	8497.81	328.798	1.21	-0.59	-4.05
16492.00	89.750	329.990	7858.79	8592.53	7350.86	4449.80	1746746.05	389313.24	39°33'55.4968"N	80°23'53.9804"W	8592.78	328.812	0.17	0.00	-0.17
16588.00	89.850	330.380	7859.13	8688.52	7434.16	4497.53	1746698.32	389396.53	39°33'56.3152"N	80°23'54.6005"W	8688.76	328.827	0.42	0.10	0.41
16683.00	89.820	328.640	7859.40	8783.51	7516.02	4545.73	1746650.12	389478.38	39°33'57.1194"N	80°23'55.2263"W	8783.75	328.834	1.83	-0.03	-4.83
16778.00	90.340	331.250	7859.27	8878.50	7598.24	4593.31	1746602.55	389560.60	39°33'57.9273"N	80°23'55.8443"W	8878.72	328.846	2.80	0.55	2.75
16874.00	90.090	328.400	7858.91	8974.48	7681.22	4641.56	1746554.30	389643.57	39°33'58.7426"N	80°23'56.4709"W	8974.69	328.857	2.98	-0.26	2.97
16969.00	90.400	331.340	7858.50	9069.47	7763.37	4689.24	1746506.63	389725.72	39°33'59.5498"N	80°23'57.0902"W	9069.67	328.867	3.11	0.33	3.09
17064.00	89.570	328.350	7858.53	9164.45	7845.51	4736.95	1746458.91	389807.85	39°34'0.3568"N	80°23'57.7100"W	9164.64	328.877	3.27	-0.87	-3.15
17160.00	90.550	331.230	7858.43	9260.43	7928.46	4785.25	1746410.62	389890.80	39°34'1.1718"N	80°23'58.3373"W	9260.62	328.887	3.17	1.02	3.00
17254.00	90.000	330.480	7857.98	9354.39	8010.55	4831.03	1746362.84	389972.89	39°34'1.9786"N	80°23'58.9323"W	9354.56	328.907	0.99	-0.59	-8.80
17349.00	89.970	330.740	7858.00	9449.37	8093.33	4877.65	1746318.22	390055.66	39°34'2.7920"N	80°23'59.5382"W	9449.52	328.924	0.28	-0.03	0.27
17445.00	90.030	330.230	7858.00	9545.35	8176.87	4924.95	1746270.93	390139.20	39°34'3.6130"N	80°24'0.1527"W	9545.49	328.939	0.53	0.06	-0.53
17539.00	89.820	329.930	7858.12	9639.34	8258.34	4971.83	1746224.05	390220.66	39°34'4.4135"N	80°24'0.7618"W	9639.47	328.950	0.39	-0.22	-0.32
17634.00	89.850	330.160	7858.40	9734.33	8340.65	5019.27	1746176.61	390302.97	39°34'5.2222"N	80°24'1.3780"W	9734.45	328.961	0.24	0.03	0.24
17729.00	90.090	330.240	7858.45	9829.31	8423.09	5066.48	1746129.40	390385.40	39°34'6.0323"N	80°24'1.9914"W	9829.43	328.973	0.27	0.25	0.08
17824.00	89.660	330.640	7858.66	9924.29	8505.72	5113.35	1746082.54	390468.03	39°34'6.8443"N	80°24'2.6004"W	9924.40	328.987	0.62	-0.45	0.42
17919.00	89.600	330.290	7859.27	10019.27	8588.38	5160.18	1746035.71	390550.68	39°34'7.6565"N	80°24'3.2090"W	10019.36	329.001	0.37	-0.06	-0.37
18015.00	89.450	328.890	7860.06	10115.26	8671.16	5208.77	1745987.13	390633.46	39°34'8.4698"N	80°24'3.8400"W	10115.35	329.007	1.47	-0.16	-4.46
18110.00	90.520	332.820	7860.09	10210.20	8754.12	5255.02	1745940.87	390716.41	39°34'9.2851"N	80°24'4.4413"W	10210.28	329.024	4.29	1.13	4.14
18205.00	90.460	332.200	7859.28	10305.05	8838.39	5298.87	1745897.02	390800.68	39°34'10.1136"N	80°24'5.0120"W	10305.10	329.056	0.66	-0.06	-0.65
18300.00	89.690	331.220	7859.15	10399.96	8922.04	5343.90	1745852.00	390884.32	39°34'10.9358"N	80°24'5.5976"W	10400.00	329.080	1.31	-0.81	-4.03
18395.00	90.310	329.230	7859.15	10494.94	9004.49	5391.07	1745804.83	390966.77	39°34'11.7460"N	80°24'6.2105"W	10494.98	329.091	2.19	0.65	2.09
18490.00	90.520	330.650	7858.46	10589.93	9086.71	5438.65	1745757.25	391048.98	39°34'12.5538"N	80°24'6.8287"W	10589.96	329.098	1.51	0.22	1.49
18585.00	90.000	329.630	7858.03	10684.91	9169.10	5485.95	1745709.96	391131.37	39°34'13.3633"N	80°24'7.4432"W	10684.94	329.108	1.21	-0.55	-4.07
18681.00	89.630	328.350	7858.34	10780.91	9251.38	5535.41	1745660.50	391213.64	39°34'14.1715"N	80°24'8.0852"W	10780.94	329.106	1.39	-0.39	-4.33
18776.00	89.290	329.100	7859.24	10875.90	9332.57	5584.73	1745611.19	391294.82	39°34'14.9690"N	80°24'8.7254"W	10875.93	329.103	0.87	-0.36	0.79
18871.00	90.000	330.110	7859.83	10970.89	9414.51	5632.79	1745563.13	391376.76	39°34'15.7740"N	80°24'9.3496"W	10970.93	329.108	1.30	0.75	1.06



Actual Wellpath Report

Elliott 9H (L-003940) AWP Proj: 23260'
Page 9 of 12



REFERENCE WELLPATH IDENTIFICATION			
Operator	EQT PRODUCTION COMPANY	Well	Elliott 9H (L-003940)
Field	Marion	API	47-049-02498-00-00
Facility	Elliott Pad	Wellbore	Elliott 9H (L-003940) AWB
Slot	Slot 09		

WELLPATH DATA (256 stations)															
MD [ft]	Inclination [°]	Azimuth [°]	TVD [ft]	Vert Sect [ft]	North [ft]	East [ft]	Grid East [US ft]	Grid North [US ft]	Latitude	Longitude	Closure Dist [ft]	Closure Dir [°]	DLS [°/100ft]	Build Rate [°/100ft]	Turn Rate [°/100ft]
18966.00	89.350	329.070	7860.37	11065.89	9496.43	-5680.88	1745515.05	391458.68	39°34'16.5789"N	80°24'9.9741"W	11065.92	329.112	1.29	-0.68	-4.09
19061.00	89.480	328.950	7861.34	11160.88	9577.87	-5729.79	1745466.14	391540.11	39°34'17.3789"N	80°24'10.6092"W	11160.92	329.111	0.19	0.14	-0.13
19157.00	89.350	329.030	7862.32	11256.88	9660.14	-5779.24	1745416.69	391622.38	39°34'18.1871"N	80°24'11.2512"W	11256.91	329.110	0.16	-0.14	0.08
19252.00	89.780	328.990	7863.04	11351.87	9741.58	-5828.16	1745367.78	391703.81	39°34'18.9870"N	80°24'11.8863"W	11351.91	329.109	0.45	0.45	-0.04
19347.00	90.060	329.000	7863.17	11446.87	9823.01	-5877.09	1745318.84	391785.24	39°34'19.7869"N	80°24'12.5216"W	11446.91	329.108	0.29	0.29	0.01
19538.00	90.150	329.740	7862.82	11637.87	9987.36	-5974.40	1745221.54	391949.57	39°34'21.4014"N	80°24'13.7853"W	11637.90	329.112	0.39	0.05	0.39
19633.00	89.780	329.150	7862.88	11732.87	10069.16	-6022.70	1745173.25	392031.38	39°34'22.2051"N	80°24'14.4125"W	11732.90	329.115	0.73	-0.39	-0.62
19728.00	89.780	329.030	7863.24	11827.87	10150.67	-6071.50	1745124.45	392112.88	39°34'23.0058"N	80°24'15.0461"W	11827.90	329.115	0.13	0.00	-0.13
19823.00	90.060	330.270	7863.38	11922.86	10232.65	-6119.50	1745076.45	392194.85	39°34'23.8112"N	80°24'15.6696"W	11922.89	329.119	1.34	0.29	1.31
19919.00	89.630	328.080	7863.64	12018.86	10315.08	-6168.69	1745027.26	392277.28	39°34'24.6209"N	80°24'16.3083"W	12018.89	329.119	2.32	-0.45	-2.28
20014.00	89.660	328.310	7864.22	12113.84	10395.82	-6218.75	1744977.20	392358.01	39°34'25.4138"N	80°24'16.9511"W	12113.87	329.112	0.24	0.03	0.24
20109.00	89.660	329.160	7864.79	12208.83	10477.02	-6268.06	1744927.90	392439.21	39°34'26.2114"N	80°24'17.5981"W	12208.87	329.109	0.89	0.00	0.89
20204.00	89.600	327.900	7865.40	12303.82	10558.04	-6317.65	1744878.31	392520.23	39°34'27.0072"N	80°24'18.2418"W	12303.86	329.105	1.33	-0.06	-1.33
20299.00	89.880	327.610	7865.83	12398.79	10638.39	-6368.34	1744827.63	392600.57	39°34'27.7962"N	80°24'18.9994"W	12398.83	329.094	0.42	0.29	-0.31
20394.00	90.120	329.860	7865.83	12493.78	10719.59	-6417.64	1744778.33	392681.76	39°34'28.5938"N	80°24'19.5394"W	12493.82	329.092	2.38	0.25	2.37
20489.00	90.090	330.130	7865.66	12588.77	10801.86	-6465.14	1744730.82	392764.03	39°34'29.4021"N	80°24'20.1566"W	12588.81	329.099	0.29	-0.03	0.28
20584.00	89.350	330.080	7866.12	12683.76	10884.21	-6512.49	1744683.48	392846.38	39°34'30.2113"N	80°24'20.7719"W	12683.80	329.106	0.78	-0.78	-0.05
20679.00	89.660	329.930	7866.94	12778.74	10966.49	-6559.98	1744635.99	392928.65	39°34'31.0196"N	80°24'21.3889"W	12778.78	329.113	0.36	0.33	-0.16
20774.00	89.750	330.100	7867.43	12873.73	11048.77	-6607.46	1744588.52	393010.93	39°34'31.8281"N	80°24'22.0058"W	12873.77	329.119	0.20	0.09	0.18
20870.00	89.290	329.240	7868.24	12969.73	11131.63	-6655.94	1744540.04	393093.78	39°34'32.6421"N	80°24'22.6355"W	12969.76	329.124	1.02	-0.48	-0.90
20965.00	90.370	331.240	7868.52	13064.71	11214.09	-6703.09	1744492.89	393176.24	39°34'33.4524"N	80°24'23.2483"W	13064.73	329.132	2.39	1.14	2.11
21060.00	89.750	330.480	7868.42	13159.67	11297.07	-6749.35	1744444.64	393259.21	39°34'34.2678"N	80°24'23.8497"W	13159.69	329.144	1.03	-0.65	-0.80
21155.00	89.780	328.370	7868.81	13254.66	11378.85	-6797.67	1744398.32	393340.99	39°34'35.0712"N	80°24'24.4773"W	13254.68	329.146	2.22	0.03	-2.22
21251.00	89.880	329.620	7869.09	13350.66	11461.14	-6847.12	1744348.87	393423.27	39°34'35.8795"N	80°24'25.1194"W	13350.68	329.145	1.31	0.10	1.30
21346.00	90.340	330.520	7868.91	13445.65	11543.47	-6894.52	1744301.48	393505.59	39°34'36.6884"N	80°24'25.7353"W	13445.67	329.152	1.06	0.48	0.95
21441.00	89.380	329.900	7869.14	13540.63	11625.91	-6941.71	1744254.28	393588.03	39°34'37.4985"N	80°24'26.3486"W	13540.65	329.159	1.20	-1.01	-0.65
21537.00	89.110	329.380	7870.41	13636.62	11708.74	-6990.23	1744205.77	393670.85	39°34'38.3122"N	80°24'26.9789"W	13636.64	329.162	0.61	-0.28	-0.54
21632.00	90.280	330.350	7870.91	13731.61	11790.89	-7037.92	1744158.08	393753.00	39°34'39.1193"N	80°24'27.5985"W	13731.63	329.167	1.60	1.23	1.02
21728.00	90.150	330.230	7870.55	13827.59	11874.27	-7085.50	1744110.51	393836.38	39°34'39.9386"N	80°24'28.2169"W	13827.61	329.175	0.18	-0.14	-0.12
21823.00	89.480	329.940	7870.86	13922.58	11956.62	-7132.88	1744063.13	393918.71	39°34'40.7476"N	80°24'28.8325"W	13922.59	329.181	0.77	-0.71	-0.31



Actual Wellpath Report

Elliott 9H (L-003940) AWP Proj: 23260'
Page 10 of 12



REFERENCE WELLPATH IDENTIFICATION			
Operator	EQT PRODUCTION COMPANY	Well	Elliott 9H (L-003940)
Field	Marion	API	47-049-02498-00-00
Facility	Elliot Pad	Wellbore	Elliott 9H (L-003940) AWB
Slot	Slot 09		

WELLPATH DATA (256 stations) † = interpolated, ‡ = extrapolated station															
MD [ft]	Inclination [°]	Azimuth [°]	TVD [ft]	Vert Sect [ft]	North [ft]	East [ft]	Grid East [US ft]	Grid North [US ft]	Latitude	Longitude	Closure Dist [ft]	Closure Dir [°]	DLS [°/100ft]	Build Rate [°/100ft]	Turn Rate [°/100ft]
21919.00	89.850	330.080	7871.42	14018.57	12039.76	7180.86	1744015.15	3940018.86	39°34'41.5645"N	80°24'29.4560"W	14018.57	329.187	0.41	0.39	0.15
22014.00	89.970	330.280	7871.57	14113.56	12122.18	7228.10	1743967.91	394084.27	39°34'42.3744"N	80°24'30.0700"W	14113.57	329.194	0.25	0.13	0.21
22101.00	89.820	330.080	7871.73	14200.55	12197.66	7271.37	1743924.65	394159.75	39°34'43.1160"N	80°24'30.6322"W	14200.55	329.200	0.29	-0.17	-0.23
22195.00	89.630	329.530	7872.18	14294.54	12278.91	7318.64	1743877.38	394240.99	39°34'43.9142"N	80°24'31.2464"W	14294.55	329.204	0.62	-0.20	-0.59
22290.00	89.880	329.460	7872.59	14389.54	12360.76	7366.87	1743829.16	394322.83	39°34'44.7183"N	80°24'31.8728"W	14389.55	329.206	0.27	0.26	-0.07
22385.00	89.690	329.830	7872.94	14484.54	12442.73	7414.87	1743781.15	394404.80	39°34'45.5236"N	80°24'32.4965"W	14484.54	329.208	0.44	-0.20	0.39
22480.00	90.180	330.560	7873.05	14579.52	12525.16	7462.09	1743733.94	394487.23	39°34'46.3336"N	80°24'33.1102"W	14579.53	329.215	0.93	0.52	0.77
22575.00	90.000	330.140	7872.90	14674.51	12607.73	7509.09	1743686.94	394569.79	39°34'47.1448"N	80°24'33.7211"W	14674.51	329.222	0.48	-0.19	-0.44
22669.00	89.750	329.900	7873.11	14768.50	12689.15	7556.06	1743639.97	394651.20	39°34'47.9448"N	80°24'34.3314"W	14768.50	329.227	0.37	-0.27	-0.26
22764.00	89.750	330.480	7873.52	14863.48	12771.58	7603.29	1743592.75	394733.63	39°34'48.7546"N	80°24'34.9452"W	14863.48	329.233	0.61	0.00	0.61
22859.00	90.000	330.960	7873.73	14958.45	12854.44	7649.75	1743546.29	394816.48	39°34'49.5689"N	80°24'35.5493"W	14958.45	329.243	0.57	0.26	0.51
22954.00	89.910	330.270	7873.80	15053.42	12937.22	7696.36	1743499.68	394899.26	39°34'50.3823"N	80°24'36.1553"W	15053.42	329.252	0.73	-0.09	-0.73
23049.00	89.910	329.950	7873.95	15148.41	13019.58	7743.71	1743452.34	394981.61	39°34'51.1915"N	80°24'36.7705"W	15148.41	329.257	0.34	0.00	-0.34
23144.00	89.850	330.000	7874.15	15243.40	13101.83	7791.24	1743404.81	395063.86	39°34'51.9996"N	80°24'37.3883"W	15243.41	329.261	0.08	-0.06	0.05
23235.00	90.090	330.600	7874.20	15334.39	13188.88	7836.33	1743359.72	395142.90	39°34'52.7763"N	80°24'37.9743"W	15334.39	329.268	0.71	0.26	0.66
23260.00 ‡	90.090	330.600	7874.16	15359.38	13202.66	7848.60	1743347.45	395164.68	39°34'52.9903"N	80°24'38.1339"W	15359.38	329.270	0.00	0.00	0.00

HOLE & CASING SECTIONS - Ref Wellbore: Elliott 9H (L-003940) AWB Ref Wellpath: Elliott 9H (L-003940) AWP Proj: 23260'									
String/Diameter	Start MD [ft]	End MD [ft]	Interval [ft]	Start TVD [ft]	End TVD [ft]	Start N/S [ft]	Start E/W [ft]	End N/S [ft]	End E/W [ft]
17.5h Open Hole	28.00	1041.00	1013.00	28.00	1040.99	0.00	0.00	-3.39	-0.49
13.375h Casing Surface	28.00	1041.00	1013.00	28.00	1040.99	0.00	0.00	-3.39	-0.49
12.25h Open Hole	1041.00	2517.00	1476.00	1040.99	2514.89	-3.39	-0.49	25.94	-56.37
9.625h Casing Intermediate	28.00	2517.00	2489.00	28.00	2514.89	0.00	0.00	25.94	-56.37
8.75h Open Hole	2517.00	7107.00	4590.00	2514.89	7081.79	25.94	-56.37	-356.29	37.72
8.5h Open Hole	7107.00	23260.00	16153.00	7081.79	7874.16	-356.29	37.72	13202.66	7848.60
5.5h Casing Production	28.00	23260.00	23232.00	28.00	7874.16	0.00	0.00	13202.66	7848.60



Actual Wellpath Report

Elliott 9H (L-003940) AWP Proj: 23260'
Page 11 of 12



REFERENCE WELLPATH IDENTIFICATION			
Operator	EQT PRODUCTION COMPANY	Well	Elliott 9H (L-003940)
Field	Marion	API	47-049-02498-00-00
Facility	Elliot Pad	Wellbore	Elliott 9H (L-003940) AWB
Slot	Slot 09		

TARGETS								
Name	TVD [ft]	North [ft]	East [ft]	Grid East [US ft]	Grid North [US ft]	Latitude	Longitude	Shape
Elliott 9H BHL Rev-1	7799.00	13199.66	7853.26	1743342.80	395161.68	39°34'52.9602"N	80°24'38.1929"W	point
Elliott 9H LP Rev-1	7799.00	201.08	-303.62	1750891.98	382163.88	39°32'45.2433"N	80°23'0.1438"W	point
Elliott Hardline 3 (7.13.21)	8000.00	12431.58	4780.54	1742415.57	394393.65	39°34'45.2765"N	80°24'49.9355"W	polygon
2D Polygon: dimensions not calculated								
Elliott Hardline 4 (7.13.21)	8000.00	15082.75	4163.30	1747032.53	397044.66	39°35'11.9373"N	80°23'51.3087"W	polygon
2D Polygon: dimensions not calculated								

WELLPATH COMPOSITION - Ref Wellbore: Elliott 9H (L-003940) AWB					Ref Wellpath: Elliott 9H (L-003940) AWP Proj: 23260'	
Start MD [ft]	End MD [ft]	Positional Uncertainty Model	Log Name/Comment		Wellbore	Survey Date
28.00	895.00	Gyro data 2015 -C T+ R+LC	01_Gyro data cont Gyro <1.42">(115'@95')		Elliott9H (L-003940)AWB	7/8/2021
895.00	7029.00	OW SGMW D rev2 -S land aid	02_S DIMW D <3.4">(95')(1049'7029')		Elliott9H (L-003940)AWB	7/8/2021
7029.00	23260.00	OW SGMW D rev2 + IFR1 + Mu ltiS latlon C orrec tbn	03_BHATC u ve +M agVA R M S A <4.2">(029')(080'23235')		Elliott9H (L-003940)AWB	7/15/2021



Actual Wellpath Report

Elliott 9H (L-003940) AWP Proj: 23260'
Page 12 of 12

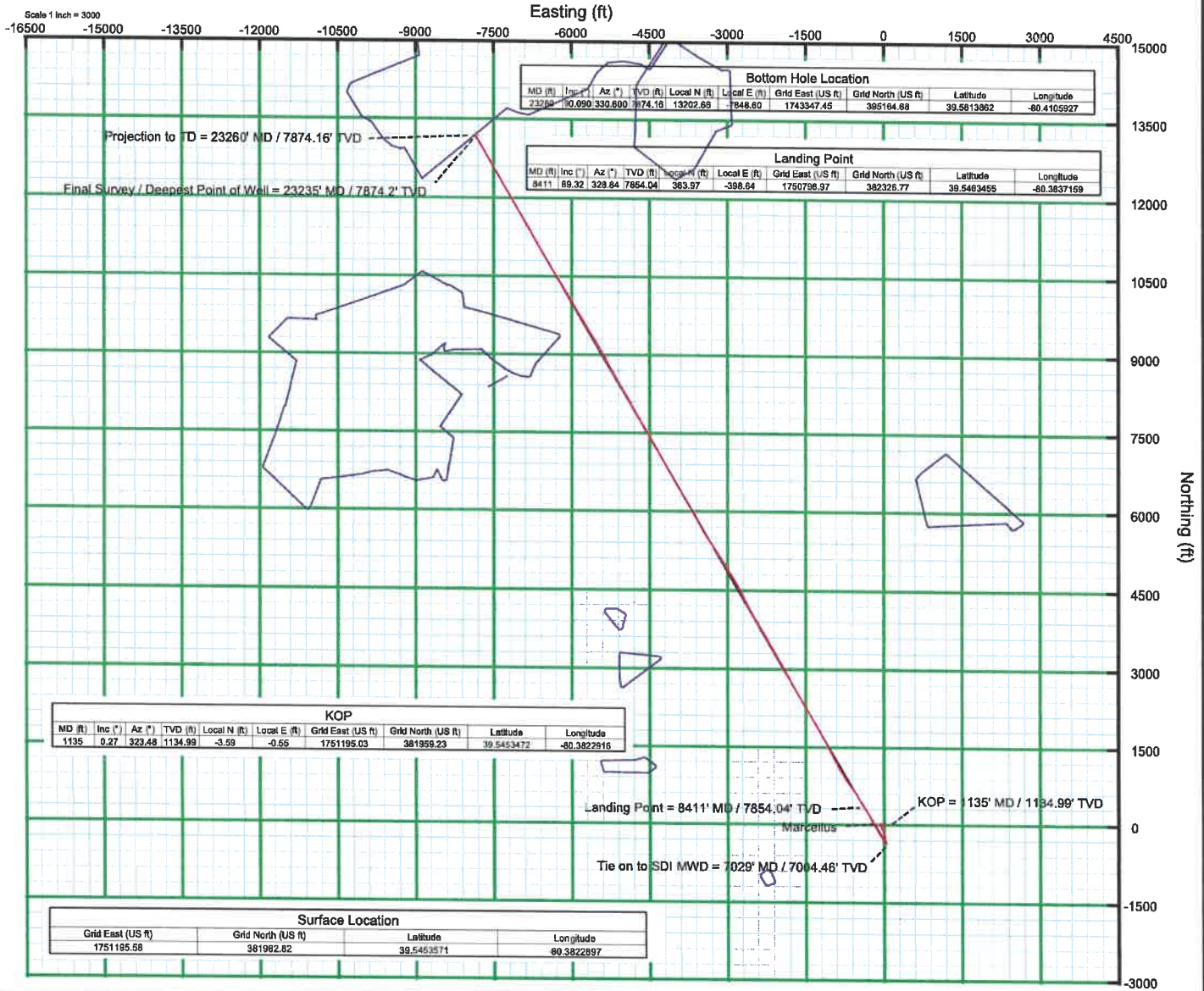
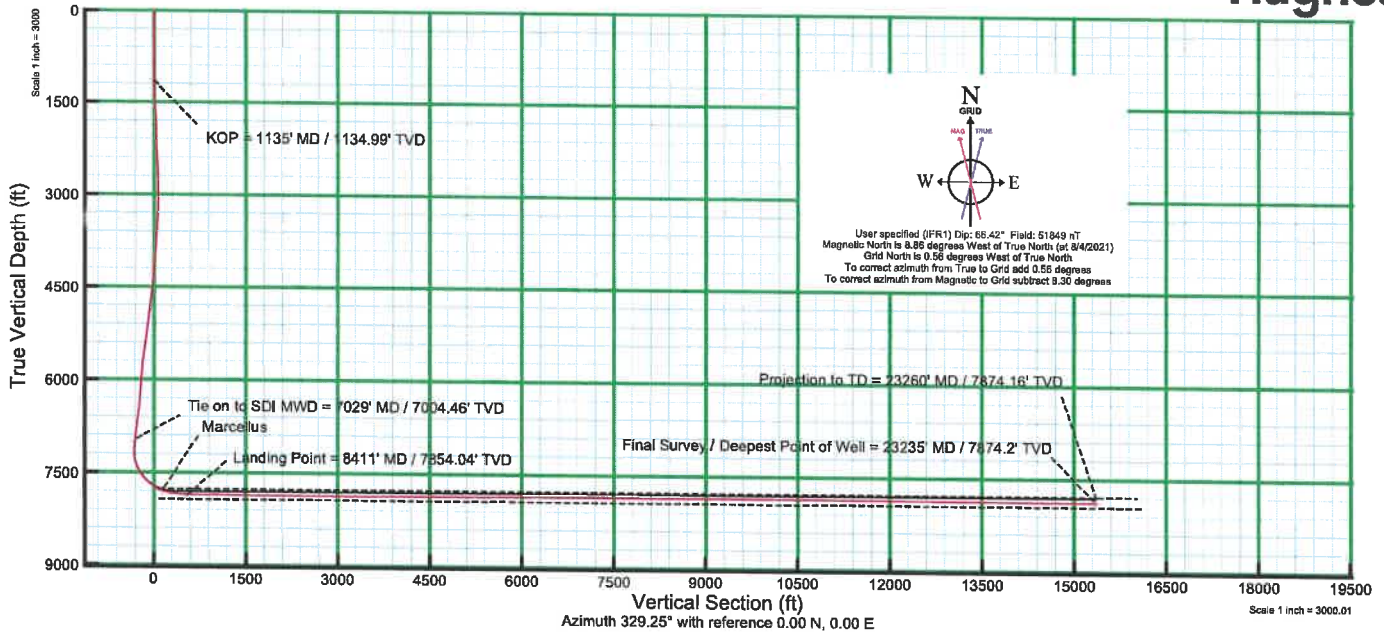


REFERENCE WELLPATH IDENTIFICATION			
Operator	EQT PRODUCTION COMPANY	Well	Elliott 9H (L-003940)
Field	Marion	API	47-049-02498-00-00
Facility	Elliot Pad	Wellbore	Elliott 9H (L-003940) AWB
Slot	Slot 09		

COMMENTS
<p>Wellpath general comments API: 47-049-02498-0000 BH Job #: 110974144 Rig: Paterson 292 Duration: 7/21/21 - 7/23/21</p> <p>Gyro at C ont Gyro <17.42">(15.895') SDIMWD <3.4">(95')(1049.7029') BH ATC u ve +MagV ARMSA <4.2">(029')(080.23235') Projected MD at TD: 23260'</p>



KB Elevation=1370 FT
 Ground Elevation=1342 FT
 All Survey Measurements were taken from KB Elevation



10/14/2022