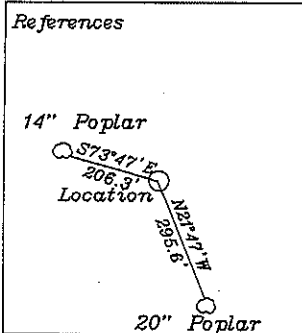
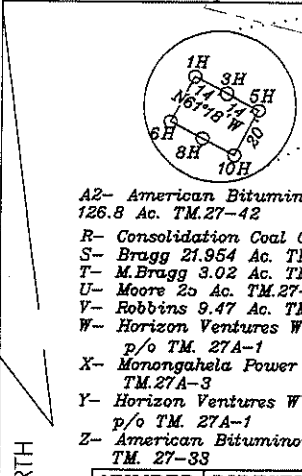


Top Hole 10,289'

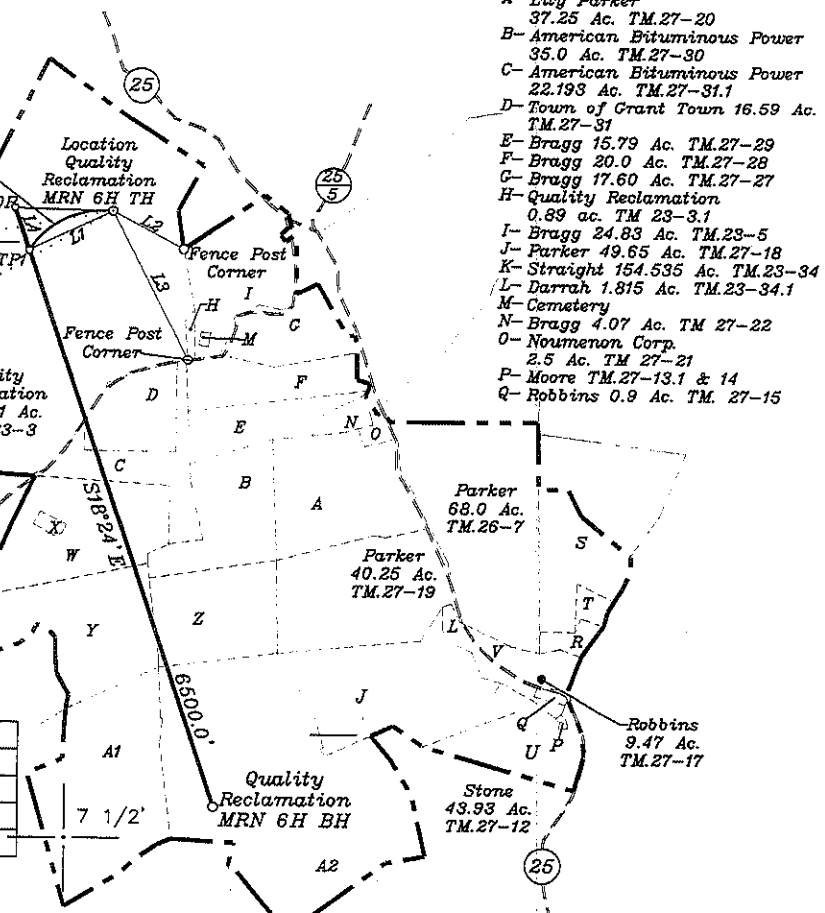


LATITUDE 39-35-00 N



- A2- American Bituminous Power 126.8 Ac. TM.27-42
- R- Consolidation Coal Co. 6 Ac. TM.26-8
- S- Bragg 21.954 Ac. TM.26-9 & 10
- T- M.Bragg 3.02 Ac. TM.26-9.1 & 9.2
- U- Moore 2s Ac. TM.27-13
- V- Robbins 9.47 Ac. TM.27-17
- W- Horizon Ventures WV Inc. 41.74 Ac. p/o TM. 27A-1
- X- Monongahela Power Co. 1.79 Ac. TM.27A-3
- Y- Horizon Ventures WV Inc. 39.39 Ac. p/o TM. 27A-1
- Z- American Bituminous Power 35 Ac. TM. 27-33

NUMBER	DIRECTION	DISTANCE
L1	S64°29'W	1,007.8'
L2	N61°36'W	879.1'
L3	N27°00'W	1,815.1'
L4	S18°24'E	500.0'



- A1- American Bituminous Power 58.038 Ac. p/o TM.27A-1
- A- Lily Parker 37.25 Ac. TM.27-20
- B- American Bituminous Power 35.0 Ac. TM.27-30
- C- American Bituminous Power 22.193 Ac. TM.27-31.1
- D- Town of Grant Town 16.59 Ac. TM.27-31
- E- Bragg 15.79 Ac. TM.27-29
- F- Bragg 20.0 Ac. TM.27-28
- G- Bragg 17.60 Ac. TM.27-27
- H- Quality Reclamation 0.89 ac. TM 23-3.1
- I- Bragg 24.83 Ac. TM.23-5
- J- Parker 49.65 Ac. TM.27-18
- K- Straight 154.535 Ac. TM.23-34
- L- Darrah 1.815 Ac. TM.23-34.1
- M- Cemetery
- N- Bragg 4.07 Ac. TM 27-22
- O- Noumenon Corp. 2.5 Ac. TM 27-21
- P- Moore TM.27-13.1 & 14
- Q- Robbins 0.9 Ac. TM. 27-15

LONGITUDE 80-07-30 W
Bottom Hole 10,181'

Top Hole 3,579'

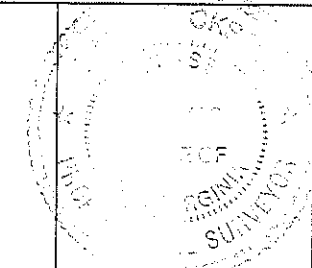
<p>Top Hole NAD 27-39.573304 N, 80.161412 W UTM NAD 83 (meters)-4380745.0 N, 572043.0 E State Plane NAD 27-391606.5 N. 1813556.5 E</p>
<p>TP1 NAD 27-39.572094 N, 80.164626 W UTM NAD 83 (meters)-4380608.1 N, 571768.1 E State Plane NAD 27-391172.3 N. 1812647.1 E</p>
<p>KOP NAD 27-39.573393 N, 80.165199 W UTM NAD 83 (meters)-4380751.8 N, 571717.6 E State Plane NAD 27-391646.8 N. 1812489.3 E</p>
<p>Bottom Hole NAD 27-39.555202 N, 80.157189 W UTM NAD 83 (meters)-4378739.4 N, 572424.4 E State Plane NAD 27-385004.5 N. 1814698.5 E</p>

Notes: Ties to wells and corners are based on State Plane Grid North-WV North Zone NAD 27.

(+) DENOTES LOCATION OF WELL ON UNITED STATES TOPOGRAPHIC MAPS

FILE NO. _____
DRAWING NO. 1
SCALE 1" = 2000'
MINIMUM DEGREE OF ACCURACY 1 in 2500
PROVEN SOURCE OF ELEVATION GPS
submeter unit

I THE UNDERSIGNED, HEREBY CERTIFY THAT THIS PLAT IS CORRECT TO THE BEST OF MY KNOWLEDGE AND BELIEF AND SHOWS ALL THE INFORMATION REQUIRED BY LAW AND THE REGULATIONS ISSUED AND PRESCRIBED BY THE DEPARTMENT OF ENERGY.
(SIGNED) David L. Packard
R.P.E. _____ L.L.S. 708



STATE OF WEST VIRGINIA
Division of Environmental Protection
OFFICE OF OIL AND GAS

DATE March 29, 2012
OPERATOR'S WELL NO. Quality Reclamation MRN 6H
API WELL NO. _____

WELL TYPE: OIL GAS LIQUID INJECTION WASTE DISPOSAL 47 049 02199H
(IF "GAS") PRODUCTION X STORAGE DEEP SHALLOW X STATE COUNTY PERMIT

LOCATION: ELEVATION 1229.6' WATER SHED Arnett Run
DISTRICT Paw Paw COUNTY Marion
QUADRANGLE Grant Town 7 1/2'

SURFACE OWNER Quality Reclamation ACREAGE 226.071 ac.
OIL & GAS ROYALTY OWNER James W. Ice et al LEASE ACREAGE 427.004 ac
LEASE NO. 1-244449-001 & 002 (TM.23/3), FA022997-0001 (TM.27/31, 31.1 & 33 - TM 27A/1 Tract W), 1-303134-001 & 002 (TM.27A/1 Tracts Y & A1), 1-290215-001 thru 004 (TM 27/42)

PROPOSED WORK: DRILL X CONVERT DRILL DEEPER REDRILL FRACTURE OR STIMULATE PLUG OFF OLD FORMATION PERFORATE NEW FORMATION X OTHER PHYSICAL CHANGE IN WELL (SPECIFY) _____
PLUG AND ABANDON C EAN OUT AND REPLUG

TARGET FORMATION Marcellus ESTIMATED DEPTH 7550'+ Horizontal Leg
WELL OPERATOR Chesapeake Appalachia, L.L.C. DESIGNATED AGENT Eric B. Gillespie
ADDRESS P.O. Box 18496 Oklahoma City, OK 73154-0496 ADDRESS P.O. Box 6070 Charleston, WV 25362

