

MORGAN RICE

G.W. KINSEY
NOW
SNYDER

NEWTON HIBBS ET. UX.
TRACT (1) 122A.
LEASE NO. 5289

NEWTON HIBBS ET. UX.
TRACT (2) 92A.
LEASE NO. 6451

C. HIBBS

ELIAS RYAN

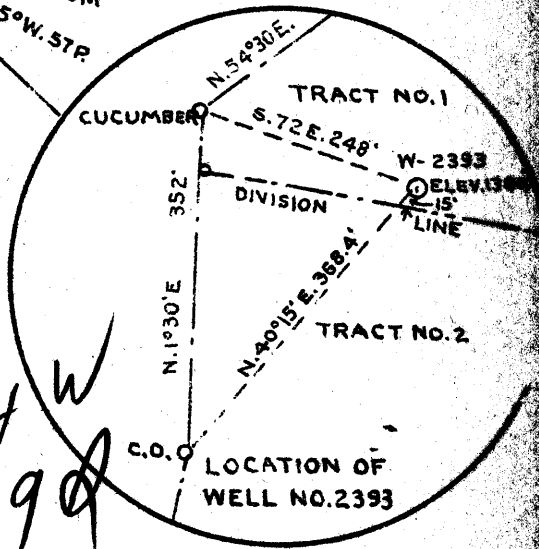
SEWICKLEY COAL OWNED BY C.R. HIBBS 174 A. AND O.C. SNOODGRASS 34.86 A.
OF MANNINGTON W.VA.

COAL OWNED BY- THE UNION TRUST CO. OF PITTSBURGH PA.

- New Location...
- Drill Deeper.....
- Abandonment.....

3.54 W
0.975 ✓

MAY 26 1940



Company THE MANUFACTURERS LIGHT AND HEAT CO.

Address 800 UNION TRUST BLDG. PITTSBURGH PA

Farm NEWTON HIBBS AND MIMA HIBBS - UX.

Tract 1 Acres 214 (208) Lease No. 6451

Well (Farm) No. 3 Serial No. 2393

Elevation (Spirit Level) 1364'

Quadrangle MANNINGTON S.W. 1/4

County MARION District MANNINGTON

Engineer J. Mercer

Engineer's Registration No.

File No. Drawing No. Y-8-670

Date MAY 9-1940 Scale 1" = 800'

STATE OF WEST VIRGINIA
DEPARTMENT OF MINES
OIL AND GAS DIVISION
CHARLESTON

WELL LOCATION MAP

File No. MAR-260A

no 049-2185

+ Denotes location of well on United States Topographic Maps, scale 1 to 62,500, latitude and longitude lines being represented by border lines as shown.

- Denotes one inch spaces on border line of original tracing.

STATE OF WEST VIRGINIA
DEPARTMENT OF MINES
OIL AND GAS DIVISION

349

Ab 760A Now 049-2185
Permit No. Well drilled in 1919

WELL RECORD

Oil or Gas Well Gas
(Kind)

Company The Mfrs. Light & Heat Co.
Address 800 Union Trust Bldg., Pittsburgh, Pa.
Farm Newton Hibbs Acres 214
Location (waters) _____
Well No. 3 - 2393 Elev. 1364'
District Mannington County Marion
The surface of tract is owned in fee by O. C. Snodgrass
Address Mannington, WVa.
Mineral rights are owned by The Mfrs. L & H Co.
800 Union Trust Bldg., Pittsburgh, Pa.
Drilling commenced March 20, 1919
Drilling completed June 23, 1919
Date shot _____ Depth of shot _____
Open Flow /10ths Water in _____ Inch
/10ths Merc. in _____ Inch
Volume _____ Cu. Ft.
Rock Pressure _____ lbs. _____ hrs.
Oil _____ bbls., 1st 24 hrs.
Fresh water _____ feet _____ feet
Salt water _____ feet _____ feet

Casing and Tubing	Used in Drilling	Left in Well	Packers
Size			
16			Kind of Packer
13			
10	516	516	Size of
8 1/4	1613	0	
6 5/8	2392	2392	Depth set
5 3/16	3287	3287	
3			Perf. top
2			Perf. bottom
Liners Used			Perf. top
			Perf. bottom

CASING CEMENTED _____ SIZE _____ No. FT. _____ Date _____
COAL WAS ENCOUNTERED AT 1032 FEET 72 INCHES
1130 FEET 120 INCHES FEET INCHES
FEET INCHES FEET INCHES

Formation	Color	Hard or Soft	Top	Bottom	Oil Gas or Water	Depth Found	Remarks
Mapletown Coal			1032	1038			
Pittsburgh Coal			1130	1140			
Little Dunkard			1518	1538			
Big Dunkard			1606	1686			
First Gas Sand			1720	1795			
Second Gas Sand			1812	1895			
First Salt Sand			1900	1960	Water - 5 bailers per hour at 1920		
Second Salt Sand			1988	2040			
Sand			2080	2100	Water - one bailer per hour		
Sand			2200	2220			
Big Lime			2375	2440			~ 231 met
Big Injum			2440	2619	Gas 2467 - 2471	30/10 in 2"	
50-Foot			3075	3115			
30-Foot			3175	3204	Oil at 3184		~ 242 met
Stray Sand			3270	3296			
Gordon Sand			3300	3331	Gas 3302-3313	33/10 w 2"	
4th Sand			3338	3348	Show of oil at 3341		
Sand			3360	3375			
Sand			3398	3416			
Fifth Sand			3426	3435	Gas 3430 - 3432		
Total depth				3447			

