

LATITUDE

5108

LONGITUDE

1.86 S  
0.36 W



7.5 OGIS topo location

7.5' loc	<u>1.86 S</u>	15' loc	<u>4.74 S</u>
	<u>0.36 W</u>	(calc.)	<u>0.36 W</u>

Company Hope Nat Gas

Farm V. Fetty (3170)

Quad Mannington 7.5 & 15  
SE

County Marion

District Lincoln

WELL LOCATION MAP

File No. 049-774-N

(was Kern 1704)

*F. COPY*

# LOCATION FOR WELL No. 3170

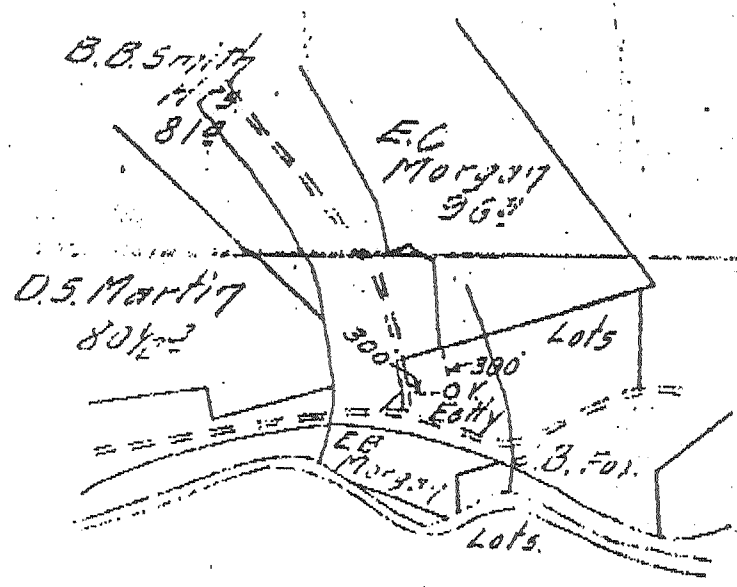
On *V. Fetty* *Marion* DISTRICT  
Farm, on waters of *Buffalo Cree*  
District, *Marion* County, West V.

Lease No. *20718* Acres *15* N. *4* S. *20* W.  
Scale, one inch equals *80 Pies* Sent to Clarksburg Office *April 6*

Location to be *Three hundred feet from E. C. Morgan farms and  
three hundred feet from county road as per plat.*  
*4-11-14*

IN ALL CASES ENGINEERS SHOULD BE TRAMBIT IN MAKING LOCATIONS  
HAVE LAND OWNERS ASSIST IN VERIFYING CORNERS, STEES AND LOCATIONS  
GIVE NAME AND ADDRESS OF PERSON WHO ASSISTS IN THIS

*Mrs E. Fetty*



*Farmment W. 75*

*Not - 633*  
*49-1704*

THIS *Resurveyed*  
RESERVE *Two hundred feet*

SPECIAL INSTRUCTIONS: COMPLETE WELL ON OR BEFORE  
*4-13-14* *J. O. Owen* As per plat, except *noted*. On field  
*4-14-14* Returned to Pittsburgh *4-14-14*

Location changed on account of  
Authorized by \_\_\_\_\_ Date \_\_\_\_\_ Signed \_\_\_\_\_

MAY 14 1914

Located on V. Petty Marion Farm  
 District Lincoln County Marion State W. Va.

Location Made 4-13-14 First Work Done 4-16-14  
 Rig Commenced 4-30-14 Rig Completed 5-9-14  
 Drilling Commenced 5-23-14 Drilling Completed 9-3-14  
 Rig Contractor A. G. Edinger Drilling Contractor H. N. G. Co. Str. #44  
 Drillers M. Brady, Shorty Waters & S. J. Cunningham  
 Tool Dressers O. B. Moore, H. L. Stewart & Dan Phillips

COPY

FORMATION	TOP	BOTTOM	Steel Line Measurements	Water Found Depth	Oil Found Depth	Gas Found Depth	REMARKS
Native Coal	287	293	405				
Pittsburg Coal	405	413	413				
Little Dunkard	798	810	1695				Steel Line Csg. 10"
Big Dunkard	900	920	1770				477'
Gas Sand	1040	1175	2939				8 1/4" 1400'
First Salt	1185	1265		1355			6 5/8" 1725'
Second Salt	1330	1438					5 3/16" 2583'
Maxon							
Little Line	1660	1680					
Pencil Cave	1680	1695					
Big Line	1695	1770					
Big Injun	1770	1919				1858	
Squaw						1868	4/10 Water 2"
Beres							
Gantz							
Fifty Foot	2300	2354					
Thirty Foot	2380	2430					
Gordon Stray	2580	2590					
Gordon	2612	2622					
Fourth	2635	2680					
Fifth	2770	2813				2771	
Hayard						2781	to 2785
						2805	12/10 Mer. 2"
Total Depth		2939					

SIZE	Charged to Well		Put in Well		Pulled Out		Left in Well		Transferred Before Completing		Left at Well Not to Use		If more than two strings of casing are holed, give reasons for leaving additional strings in well.
	Feet	In.	Feet	In.	Feet	In.	Feet	In.	Feet	In.	Feet	In.	
12" Csg.													
10" "	588	7	481				481				107	7	
8 1/4" "	1451	2	1411				1411				40	2	
6 5/8" "	2001	1	1738				1738				265	1	
5 3/16" "	2724	2	2603				2603				121	2	
Tbg.													

PACKER RECORD

SIZE	KIND	Amount Anchor	Amount Above Anchor	REMARKS
10 x 13	C.I. Flange		477'	Steel Line
8 1/4	Steel Shoe		1400'	" "
8 1/4 x 6 5/8	Callahan B.H.		1725'	" "
6 5/8 x 5 3/16	"		2583'	" "

SHOOTING RECORD (If shot before or upon completion of well)

DATE	Quartz	Top of Shell	Bottom of Shell	Diameter	Seed	Test Before Shot			Test After Shot			Test Taken After Shot No. Hours	By Whom Shot
						Reading	Liquid	Opening	Reading	Liquid	Opening		
		See Rep. Notice.											

CEMENTING RECORD

Date Cemented	6-4-14	Size Hole Cemented	16"	Size Casing Cemented	10"
Top Pittsburg Coal	405'	Top Cementing	371'	Amount Cement Used	4500#
Bottom Pittsburg Coal	413'	Bottom Cementing	477'	Amount Sand Used	9000#
Mr.	Harry Scott				
Remarks:	Signature of persons who cemented well				
	W. H. Roupe, J. W. Eflaw, J. P. Taylor & Geo. Graham				

1704

Approved by \_\_\_\_\_ Foreman

(Computer Numbers for Wells Drilled Prior to 1929)

COUNTY HARRISON (47-033)

TABLE NO. 5

PERMITS TO DRILL AND WELLS COMPLETED 19 78

SUPPLEMENT SHEET

PERMIT NUMBER	WELL OPERATOR FARM AND WELL NUMBER	PERMIT NUMBER	WELL OPERATOR FARM AND WELL NUMBER
033-1683	Pennzoil Company G. W. Brohard # 4	033-1722	Pennzoil Company Phoebe Webb # 3
033-1684	Pennzoil Company B. H. Brown # 1	033-1723	Pennzoil Company Richard Webb # 2
033-1685	Pennzoil Company B. H. Brown # 2	033-1724	Pennzoil Company B. H. Brown # 5
033-1686	Pennzoil Company B. H. Brown # 3	033-1725	Pennzoil Company B. H. Brown # 8
033-1693	Consolidated Gas Supply Corporation M. G. Holmes # 12185	033-1726	Pennzoil Company B. H. Brown # 9
033-1694	Consolidated Gas Supply Corporation M. G. Holmes # 12186	033-1727	Pennzoil Company B. H. Brown # 12
033-1695	Consolidated Gas Supply Corporation M. G. Holmes # 12187	033-1728	Pennzoil Company I. A. Carpenter # 1
033-1696	Consolidated Gas Supply Corporation M. G. Holmes # 12188	033-1729	Pennzoil Company W.B. Carpenter # 8
033-1702	Consolidated Gas Supply Corporation V. Lynch # 6015 (CW-659)	033-1730	Pennzoil Company W.B. Carpenter # 9
033-1703	Consolidated Gas Supply Corporation H. Fortney # 3159	033-1731	Pennzoil Company W. B. Carpenter # 12
<del>033-1704</del> <i>See 1049-774-N</i>	Consolidated Gas Supply Corporation V. Fetty # 3170	033-1732	Pennzoil Company J. N. Coffman # 4
033-1705	Consolidated Gas Supply Corporation A. Reynolds # 2047	033-1733	Pennzoil Company T. E. Coffman # 2