

LATITUDE 39° 40'

80° 25'

LONGITUDE

OGIS
7.5 loc

T5 OGIS topo location

7.5' loc	<u>2.01 S</u>	15' loc	<u>2.01 S</u>
	<u>0.05 W</u>	(calc.)	<u>0.05 W</u>

Company Maxton Oil + Gas

Farm Ash Heirs

Quad Hundred Mannington WC

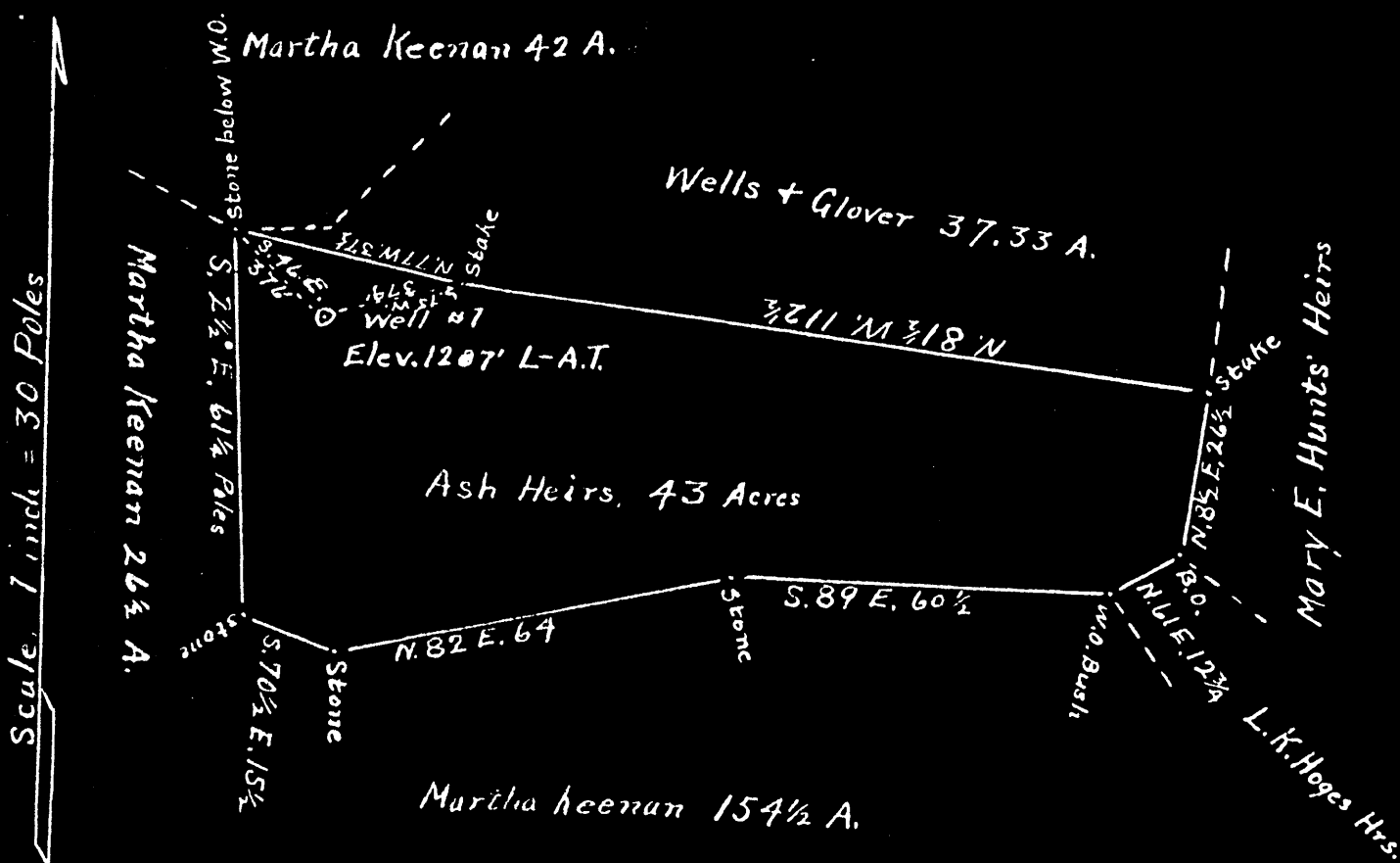
County Marion

District Mannington

WELL LOCATION MAP now

File No. 049-50 → 679

Proposed Location of Well No. 1 of the Maxton Oil and Gas Co. of Fairmont, West Va. on the Ash Heirs Farm Consisting of 43 Acres, ~~Consisting of~~ Situated in Mannington District, Marion County, West Virginia.



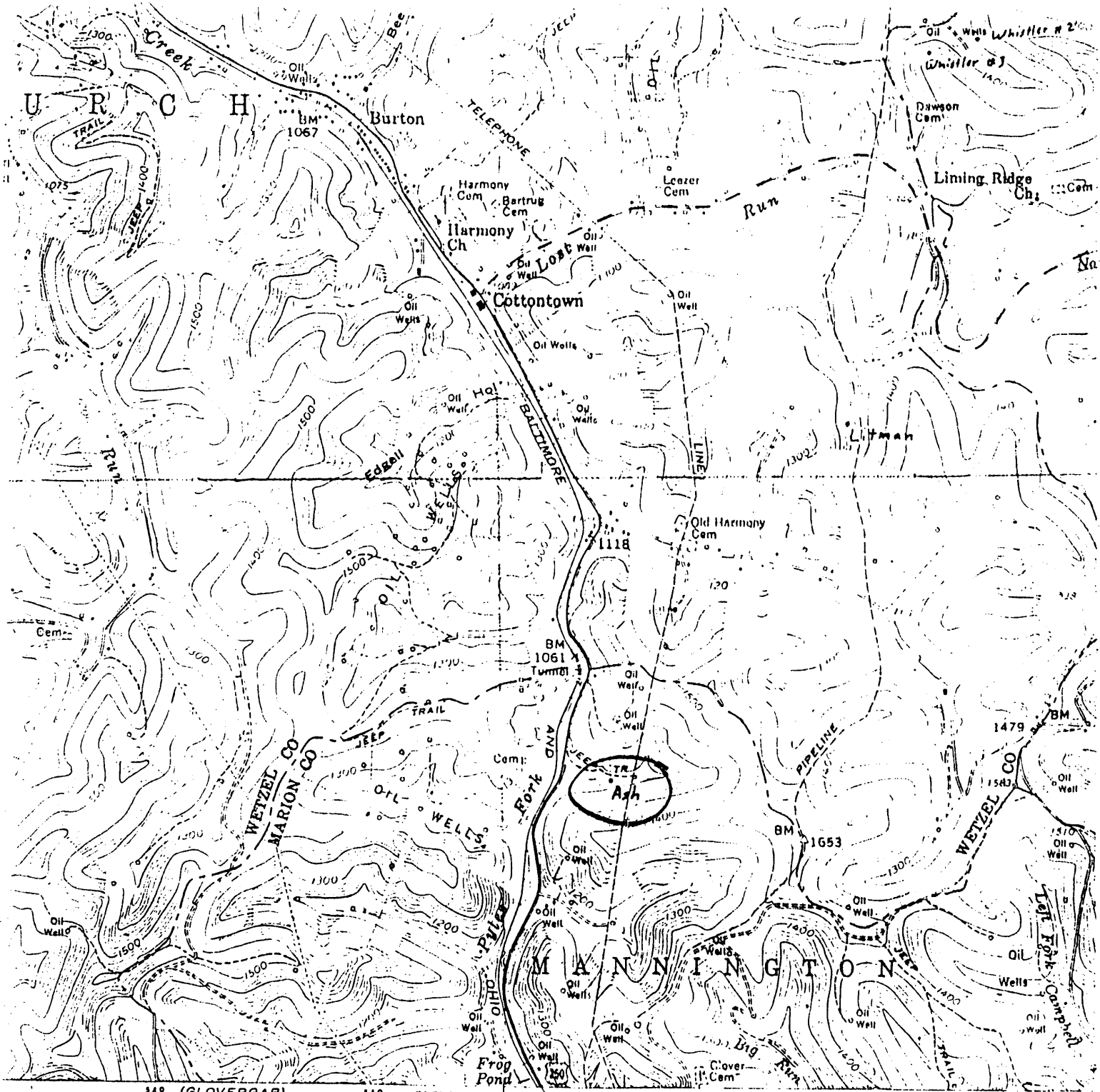
MAR-50

I, the undersigned, hereby Certify that this map is correct and Shows all the information, to the best of my knowledge and belief, required by the Oil and Gas Section of the Mining Laws of West Virginia.

I. N. Robinson, Surveyor.

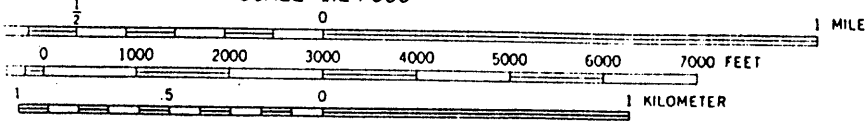
Acknowledged before me, a Notary Public for Wetzel County, West Virginia, this 22nd day of September, 1934.
My Commission expires January 14th 1940

Glen U. Hunt
Notary Public.



48 (GLOVERGAP) 4963 III SW 49 GLOVERGAP 15 MI. FAIRMONT 23 MI. 25' 1:250 000 FEET (PA.) 51 52

SCALE 1:24 000



CONTOUR INTERVAL 20 FEET
NATIONAL GEODETIC VERTICAL DATUM OF 1929

049 - 679

Heavy duty
Medium duty



QUADRANGLE LOCATION

THIS MAP COMPLIES WITH NATIONAL MAP ACCURACY STANDARDS
FOR SALE BY U. S. GEOLOGICAL SURVEY, RESTON, VIRGINIA 22092
FOR DESCRIBING TOPOGRAPHIC MAPS AND SYMBOLS IS AVAILABLE ON REQUEST

WEST VIRGINIA DEPARTMENT OF MINES

OIL AND GAS DIVISION

PRELIMINARY DATA SHEET NO. 1

File No. _____

Well No. 1

Maxton Oil and Gas Company of Fairmont, W. Va.

on the Ash Heirs Farm

containing 43 acres. Location _____

Mannington District, in Marion County, West Virginia

The surface of the above tract is owned in fee by Ash Heirs, S. G. Ash, Agt.,

of Mannington, W. Va. address, and the oil and gas mineral rights are owned by

Same of _____

The oil and gas privileges are held under lease by the above named company, and this well is drilled under permit No. Mar-50 issued by the West Virginia Department of Mines, Oil and Gas Division

Nov. 5th 1934.

Elevation of surface at top of well, 1207' I-A.T. Spirit Barometric.

The number of feet of the different sized casings used in the well.

_____ feet _____ size. Wood conductor.

181 feet 10" size, csg. _____ feet _____ sized csg.

_____ feet 8 1/2" (Pulled) size, csg. _____ feet _____ sized csg.

2215 feet 6 5/8" size, csg. _____ feet _____ sized csg.

2954 " 5 3/16" size, set at _____

3415 " 2" tubing. _____

Spang Anchor packer of 5 3/16" size, set at 3210-3213 1/2

with cave-catchers just above Fifth Sand and above Byard Sand.

2" tubing, ~~XXXX~~ perforated for 28' 2" at bottom and again for

6' in Fifth Sand., in casing perforated at _____ feet to _____ feet.

Coal was encountered at 640 feet, thickness 5 feet ~~XXXX~~ and at 915

feet; thickness 5 feet ~~XXXX~~ and at 1015 feet; thickness 8 feet. ~~XXXX~~

Liners were used as follows: (Give details) None

August 15, 1935.

Date.

Approved Maxton Oil and Gas Co. Owner.

By John C. Lough, Sec. & Treas.

(TITLE)



049 679

Maxten Oil and Gas Co. Company

COMPLETION DATA SHEET

Fairmont, W. Va. Address

No. 2

WELL No. 1

FARM Ash Heirs MAR-50

FORMATION RECORD

Name	Color	Character	Oil, Gas or Water	Top	Bottom	Thickness	Total Depth	Remarks
Clay	Brown	Soft					195	Conductor
Red reek	Red	Soft		195	220	25	220	
Clay	Dark	Soft		220	615	395	615	
Bluff Sand	White	Hard		615	640	25	640	
Fairview C.	Black	Soft		640	645	5	645	
Sand	White	Hard		645	660	15	660	
Line	White	Hard		660	670	10	670	
Shale	Black	Soft		670	760	90	760	
Line	White	Hard		760	880	120	880	
Slate	Dark	Soft		880	915	35	915	
Mapletown C.	Black	Soft		915	920	5	920	
Line	White	Hard		920	950	30	950	
Slate	Dark	Soft		950	960	10	960	
Line	Light	Hard		960	990	30	990	
Slate	Dark	Soft		990	1015	25	1015	
Pitts. Coal	Black	Soft		1015	1023	8	1023	
Line	Light	Hard		1023	1075	52	1075	
Red Reek	Red	Soft		1075	1085	10	1085	
Line	Light	Hard		1085	1175	90	1175	
Red Reek	Red	Soft		1175	1183	8	1183	
Line	Light	Hard		1183	1200	17	1200	
Red Reek	Red	Soft		1200	1210	10	1210	
Slate-Shell	Dark	Soft		1210	1310	100	1310	
Line	Light	Hard		1310	1325	15	1325	
Red Reek	Red	Soft		1325	1345	20	1345	
Line	Light	Hard		1345	1362	17	1362	
B. Shale	Black	Soft		1362	1415	53	1415	
L. Dunkard	White	Hard		1415	1450	35	1450	
Slate	Black	Soft		1450	1477	27	1477	
B. Dunkard	White	Hard		1477	1538	61	1538	
Slate	Dark	Soft		1538	1560	22	1560	
Sand	Light	Hard		1560	1585	25	1585	
Slate	Dark	Soft		1585	1630	45	1630	
" & Shells "	"	" & Hard		1630	1750	120	1750	
Line	White	Hard		1750	1760	10	1760	
1st Salt S.	White	Hard		1760	1803	43	1803	
Slate	Dark	Soft		1803	1810	7	1810	
2nd Salt S.	Light	Hard		1810	1900	90	1900	
Slate	Dark	Soft		1900	1910	10	1910	
Sand	Light	Hard		1910	1936	26	1936	
Slate	Dark	Soft		1936	2006	70	2006	
Line	Light	Hard		2006	2030	24	2030	
3rd Salt S.	Light	Hard		2030	2049	19	2049	
Slate	Black	Soft		2049	2110	61	2110	
Gritty Line	White	Hard		2110	2144	34	2144	

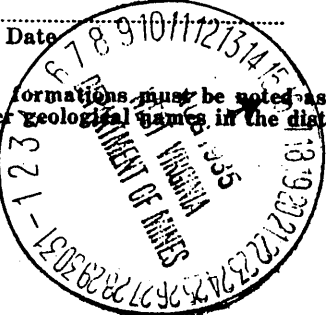
(Next page)

shot
Well was not shot at feet; well was shot at feet.

Salt
Fresh water at feet; fresh water at feet.

producing
Well was hole.
dry

Approved Owner



NOTE: All bottom formations must be noted as indicated above and all key-rocks and oil and gas sands must be recorded under their proper geological names in the district as well as any local names commonly used in the district for such strata.

649 679

Company

COMPLETION DATA SHEET

Address

No. 2

FORMATION RECORD

WELL NO.

FARM

Name	Color	Character	Oil, Gas or Water	Top	Bottom	Thickness	Total Depth	Remarks
Slate	White	Soft		2144	2160	16	2160	
Line	White	Hard		2160	2173	13	2173	
Slate	Dark	Soft		2173	2210	37	2210	
Big Line	Yellow	Hard		2210	2278	68	2278	
Injun Sand	Light	Hard		2278	2460	182	2460	Gas 2313 to 2316
Slate	Light	Soft		2460	2550	90	2550	
Sand	Light	Hard		2550	2560	10	2560	
Slate	Light	Soft		2560	2568	8	2568	Gas and water, 2368
Gritty line	Light	Hard		2568	2600	32	2600	
Slate-Shells	Dark	Soft		2600	2930	330	2930	
50 F. Sand	Light	Hard		2930	2990	60	2990	
Slate	Light	Soft		2990				
30F. Sand	White	Hard		3023	3043	20	3043	
Slate	Dark	Soft		3043	3055	12	3055	
Red Reek	Red	Soft		3055	3065	10	3065	
Gorden Stray	Light	Hard		3065	3077	12	3077	
Slate	Pink	Soft		3077	3080	3	3080	
Sand	Dark	Hard		3080	3093	13	3093	
Slate	Dark	Soft		3093	3118	25	3118	
Gorden S.	Light	Hard		3118	3170	52	3170	
Slate	Dark	Soft		3170	3193	23	3193	
4th Sand	Dark	Hard		3198	3225	27	3225	
Slate	Dark	Soft		3220	3246	26	3246	
5th Sand	Light	Hard		3251	3270	19	3270	Gas 3254 to 3260.
Slate	Dark	Soft	XXXXXX				3270	
Byard Sand				3389	3394	5	3394	Gas 3390 to 3392
Total Depth,							3415	

shot

Well was not shot at feet; well was shot at feet.

Salt Fresh water at feet; salt fresh water at feet.

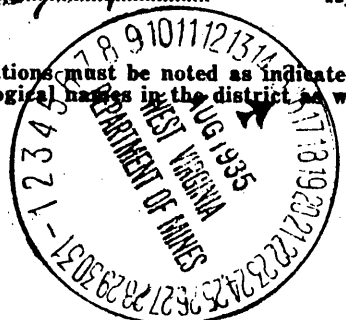
producing Well was hole.

dry

August 15, 1935 Date

Approved Maxton Oil & Gas Co. By Scott B. Lowe, Jr. - Pres

NOTE: All bottom formations must be noted as indicated above and all key-rocks and oil and gas sands must be recorded under their proper geological names in the district as well as any local names commonly used in the district for such strata.



649679

49-679

ASH HEIRS 1

Mannington Dist., Marion County
LEASE. 431, to Maxton O-G Co

Oct. 21, 1933 Book 319 p. 50
CARNEGIE GAS CONTRACT #576

BEGUN -
COMPLETED - December 24, 1934.
(33A surrendered - 1939)

PITTS. COAL.	1015'	-	1025'
INJUN SAND.	2270'	-	2400'
GAS - 2313'	2316'		
5th SAND.	3251'	-	3270'
GAS - 3254'	3260'		
BYARD SAND.	3389'	-	3394'
GAS - 3390'	3392'		
TOTAL DEPTH.	3415'		

10" 181' (incl. drill. nipple 8' 2")
6" 2215'
(pulled)

5" 2954'
2" tubing, December 25, 1935.
Bottom jnt. 25' 2" perforated;
then 2' cave catcher above
Byard; then 127' 11" tubing;
then 6' 2" perforated; then 2'
cave catcher above 5th sand;
then 35' 1" tubing; then 3' 7"
Spang anchor packer.

No rig.
1140' feed line.

Note: This lease provides for drilling of second well - on surrender of oil but 10A. (see plat)