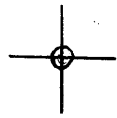


LATITUDE 39° 37' 30"

LONGITUDE 80° 12' 30"



7.5 OGIS topo location

7.5' loc 1.295 15' loc \_\_\_\_\_  
' 2.13W (calc.) \_\_\_\_\_

Company Penn 2011

Farm David Jones #5

Quad GRANT TOWN 7 1/2'

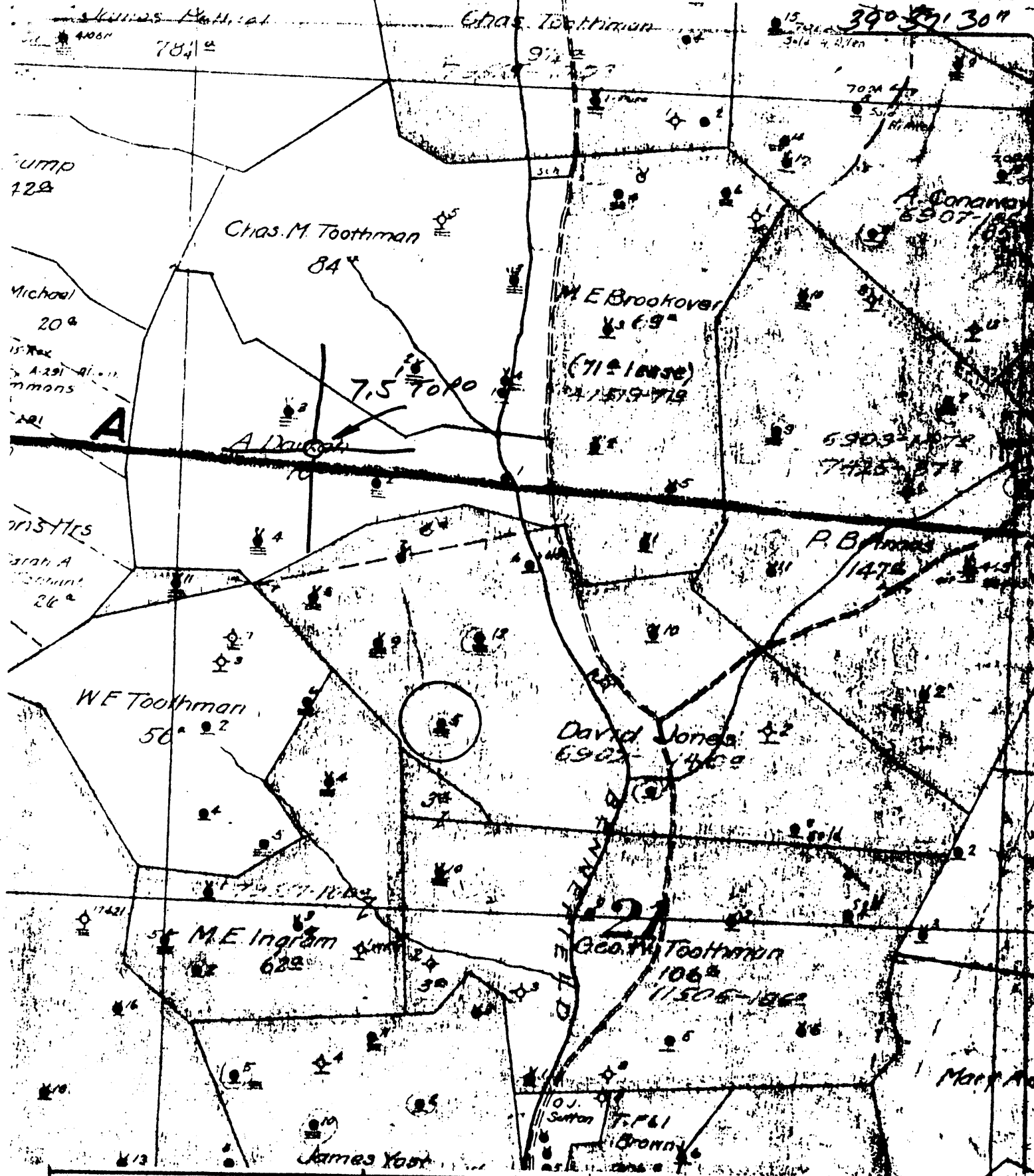
County MARION

District PAW PAW

WELL LOCATION MAP

File No. 049 - 0543

WAS: 70300



(+) DENOTES LOCATION OF WELL ON UNITED STATES TOPOGRAPHIC MAPS



DATE 1-24- 1979  
 OPERATOR'S WELL NO 5  
 API WELL NO 47-049-0543  
 STATE COUNTY PERMIT

FORM IV-6  
(8-78)

NGE N10 E21

STATE OF WEST VIRGINIA  
 DEPARTMENT OF MINES  
 OIL AND GAS DIVISION

WELL TYPE: OIL  GAS  LIQUID INJECTION  WASTE DISPOSAL   
 (IF "GAS", PRODUCTION  STORAGE  DEEP  SHALLOW   
 LOCATION: ELEVATION 1212 WATER SHED BENEFIELD PRONG  
 DISTRICT PAW PAW COUNTY MARION  
 QUADRANGLE GRANT TOWN 7.5'

SURFACE OWNER \_\_\_\_\_ ACREAGE \_\_\_\_\_  
 OIL & GAS ROYALTY OWNER \_\_\_\_\_ LEASE ACREAGE \_\_\_\_\_  
 LEASE NO. \_\_\_\_\_

PROPOSED WORK: DRILL  CONVERT  DRILL DEEPER  REDRILL  FRACTURE OR STIMULATE  PLUS OFF OLD FORMATION  PERFORATE NEW FORMATION  OTHER PHYSICAL CHANGE IN WELL (SPECIFY) \_\_\_\_\_

PLUS AND ABANDON  CLEAN OUT AND REPLUS   
 TARGET FORMATION \_\_\_\_\_ ESTIMATED DEPTH \_\_\_\_\_  
 WELL OPERATOR Pennzoil Company DESIGNATED AGENT James A. Crews  
 ADDRESS P. O. Box 1588 ADDRESS P. O. Box 1588  
Parkersburg, WV 26101 Parkersburg, WV 26101

DAVID JONES-5

Well No. 5 *David Jones* P. 1214. 5400 - 1312. 25 Farm.  
 Lease No. *Can Can* District *Marion* County *W*  
 Rig built by *S. P. Orr*  
 Well drilled by *Carroll Dry* Contractor.  
 Began drilling *Nov 27* 1905 Completed *Jan 31* 1906

ROCK FORMATION.	TOP.	BOTTOM.	REMARKS.
<i>Inductin</i>		<i>14</i>	
<i>Water Coal</i>	<i>320</i>		
<i>Mapleton Coal</i>	<i>595</i>		
<i>Pittsburg Coal</i>	<i>695</i>		
<i>Little Sandstone Sand</i>	<i>1125</i>		
<i>Big " "</i>	<i>1225</i>		
<i>Gas. " "</i>	<i>1320</i>		
<i>Salt " "</i>	<i>1640</i>		<i>Water 1700</i>
<i>Big Limestone</i>	<i>1930</i>		
<i>Big Dryum Sand</i>	<i>1990</i>	<i>2180</i>	
<i>Oil</i>	<i>2110</i>		
<i>30 feet " "</i>	<i>2525</i>		<i>2nd Oct 3133 made small flow</i>
<i>50 " "</i>	<i>2610</i>	<i>2710</i>	
<i>Gordon " "</i>	<i>2900</i>		<i>4 1/2 x 4 1/2 in 30 98</i>
<i>5th Sand</i>	<i>3117</i>		<i>Shot 4 1/2 - 40 lbs</i>
<i>Oil</i>	<i>3118</i>		
<i>Total Depth</i>		<i>3143</i>	

\* Original 25 rods drilled & standard all 12 1/2" 6/14/1907

**CASING RECORD.**

Size	CHARGED TO WELL.		PUT IN WELL.		PULLED OUT.		LEFT IN WELL.		Transferred to Are Completion		Left at Well Not in Use.	
	Feet	In.	Feet	In.	Feet	In.	Feet	In.	Feet	In.	Feet	In.
<i>10</i>			<i>720</i>				<i>720</i>					
<i>8 1/2</i>			<i>1220</i>				<i>1220</i>					
<i>6 7/8</i>			<i>1930</i>				<i>1930</i>					
<i>5 3/16</i>			<i>2155</i>				<i>2155</i>					
<i>4 1/2</i>			<i>437</i>				<i>437</i>					

Production First 24 Hours } *5* Bbls Signed *J. B. Gregory* Rept

47-049-0543

Paupaw District, Marion County, W. Va.  
South Penn Oil Co.  
0.9 mi. N. 10° W. of Fairview.  
Completed, January 31, 1906.  
Conductor, 14".



	Top.	Bottom.
Coal, native (Waynesburg)	320	324
Coal, Mapletown (Sewickley)	595	602
Pittsburgh Coal	695	704
Dunkard Sand	1225	
Gas Sand	1320	
Salt Sand (water, 1700')	1640	
Big Lime	1930	1990
Big Injun Sand (first pay, 2110'; second, 2133')	1990	2180
Gants and 50-Ft. Sands	2610	2710
Bayard Sand (pay, 3118'; 10 bls.)	3117	3137
Total depth		3143

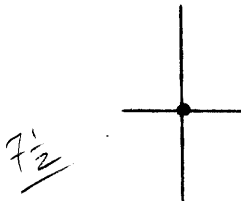
Shot July 5, 1906, with 20 qts.; Oct. 7, 1907, with 30 qts.;  
Sept. 7, 1911, with 20 qts. in 4 1/2" x 6'9" shell; top, 2109';  
Sept. 19, 1911, with 20 qts., in 4 1/2" x 6'9" shell; top, 2131'.

Latitude

39° 37' 30"

80° 12' 30"

Longitude



Topo Location

7.5' Loc.	<u>1.295</u>	15' Loc.	<u>4.175</u>
	<u>2.130</u>	(calc.)	<u>4.350</u>

# 556 on Co Rept map

Company SOUTH PENN

Farm DAVID JONES 5

15' Quad Blacksville WC  
(sec.)

7.5' Quad GRANT TOWN

District PAW PAW

WELL LOCATION PLAT

County 049 Permit 70300  
Now 543