

47-049-00514P

Topo Quad: Glover Gap 7.5'

Scale: 1" = 2000'

County: Marion

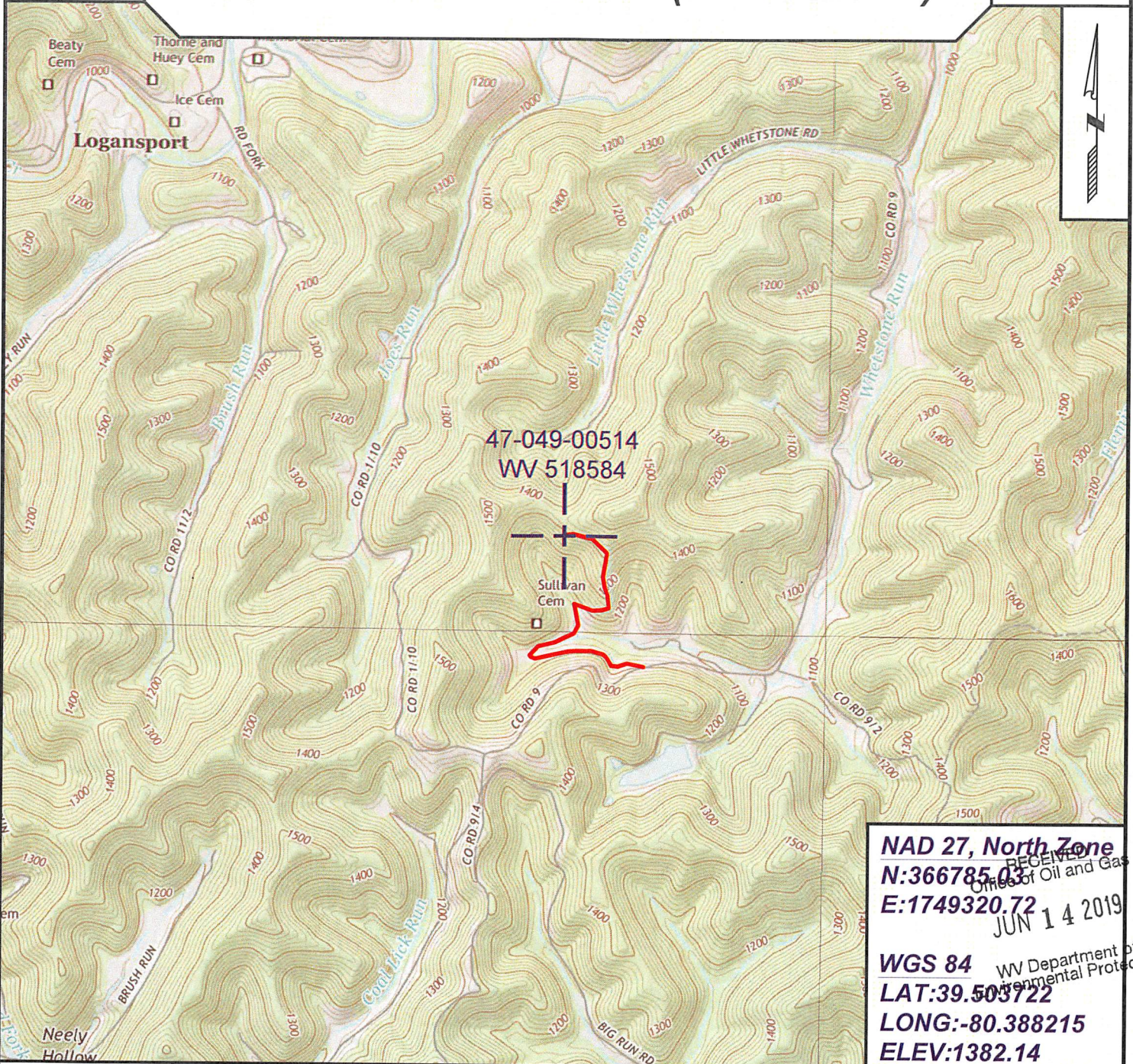
Date: December 11, 2018

District: Mannington

Project No: 74-18-00-08

47-049-00514 WV 518584 (J. L. Erwin #6)

Topo



NAD 27, North Zone
N:366785.03
E:1749320.72

RECEIVED
 Office of Oil and Gas
 JUN 14 2019

WGS 84
LAT:39.503722
LONG:-80.388215
ELEV:1382.14

WV Department of Environmental Protection



SURVEYING AND MAPPING SERVICES PERFORMED BY:
ALLEGHENY SURVEYS, INC.
 1-800-482-8606
 237 Birch River Road
 Birch River, WV 26610
 PH: (304) 649-8606
 FAX: (304) 649-8608

PREPARED FOR:
EQT Production Company
 2400 Ansys Drive, Suite 200
 Canonsburg, PA 15317

47-049-00514P

Topo Quad: Glover Gap 7.5'

Scale: 1" = 400'

County: Marion

Date: December 11, 2018

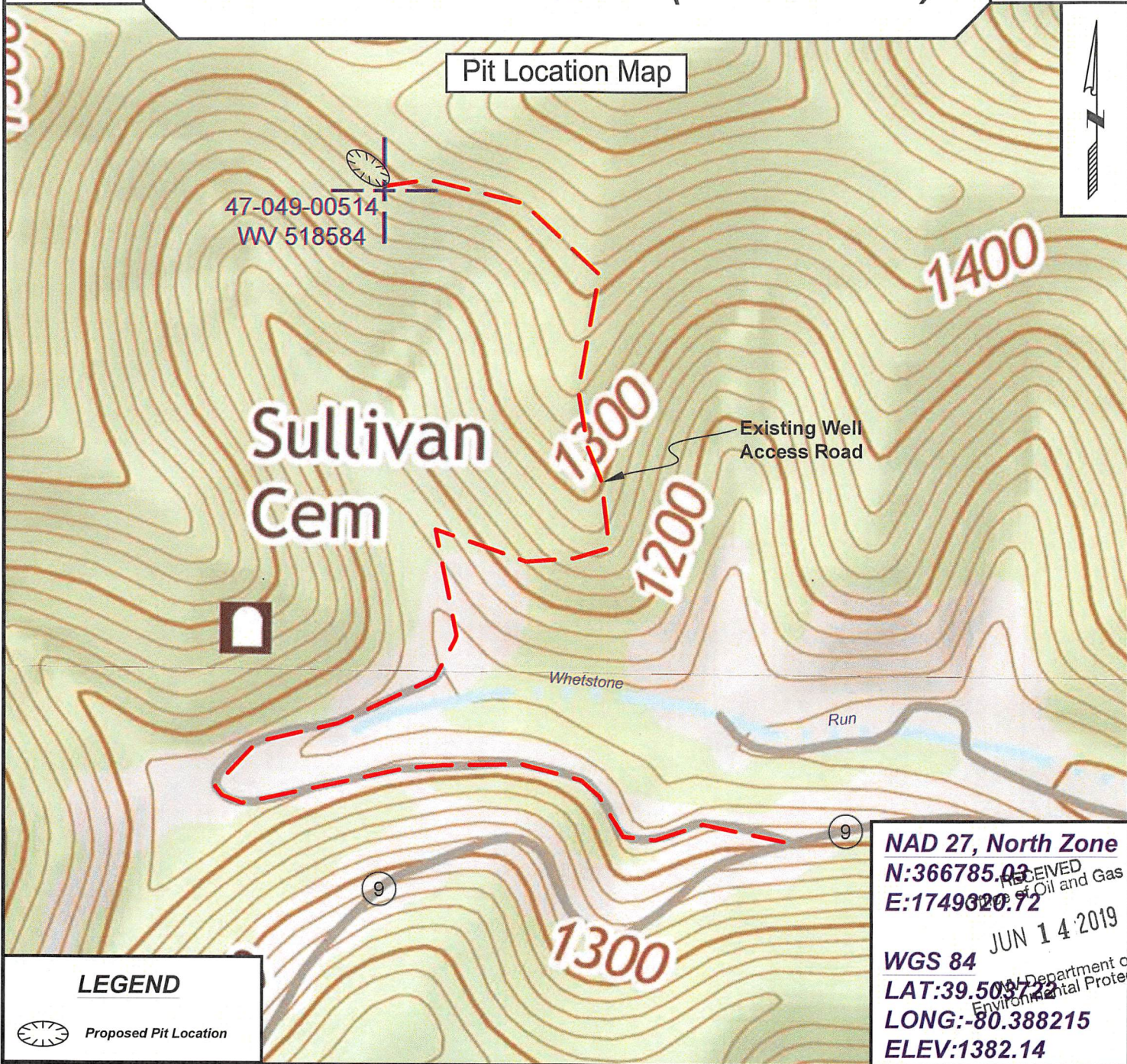
District: Mannington

Project No: 74-18-00-08

47-049-00514 WV 518584 (J. L. Erwin #6)

Topo

Pit Location Map



47-049-00514
WV 518584

Sullivan Cem

Existing Well
Access Road

Whetstone

Run

NAD 27, North Zone
N:366785.03
E:1749020.72

WGS 84
LAT:39.509722
LONG:-80.388215
ELEV:1382.14

JUN 14 2019

Department of
Environmental Protection

LEGEND

Proposed Pit Location



SURVEYING AND MAPPING SERVICES PERFORMED BY:

ALLEGHENY SURVEYS, INC.

1-800-482-8606
237 Birch River Road
Birch River, WV 26610
PH: (304) 649-8606
FAX: (304) 649-8608

PREPARED FOR:

EQT Production Company

2400 Ansys Drive, Suite 200
Canonsburg, PA 15317

47-049-00514P

Topo Quad: Glover Gap 7.5'

Scale: 1" = 500'

County: Marion

Date: December 11, 2018

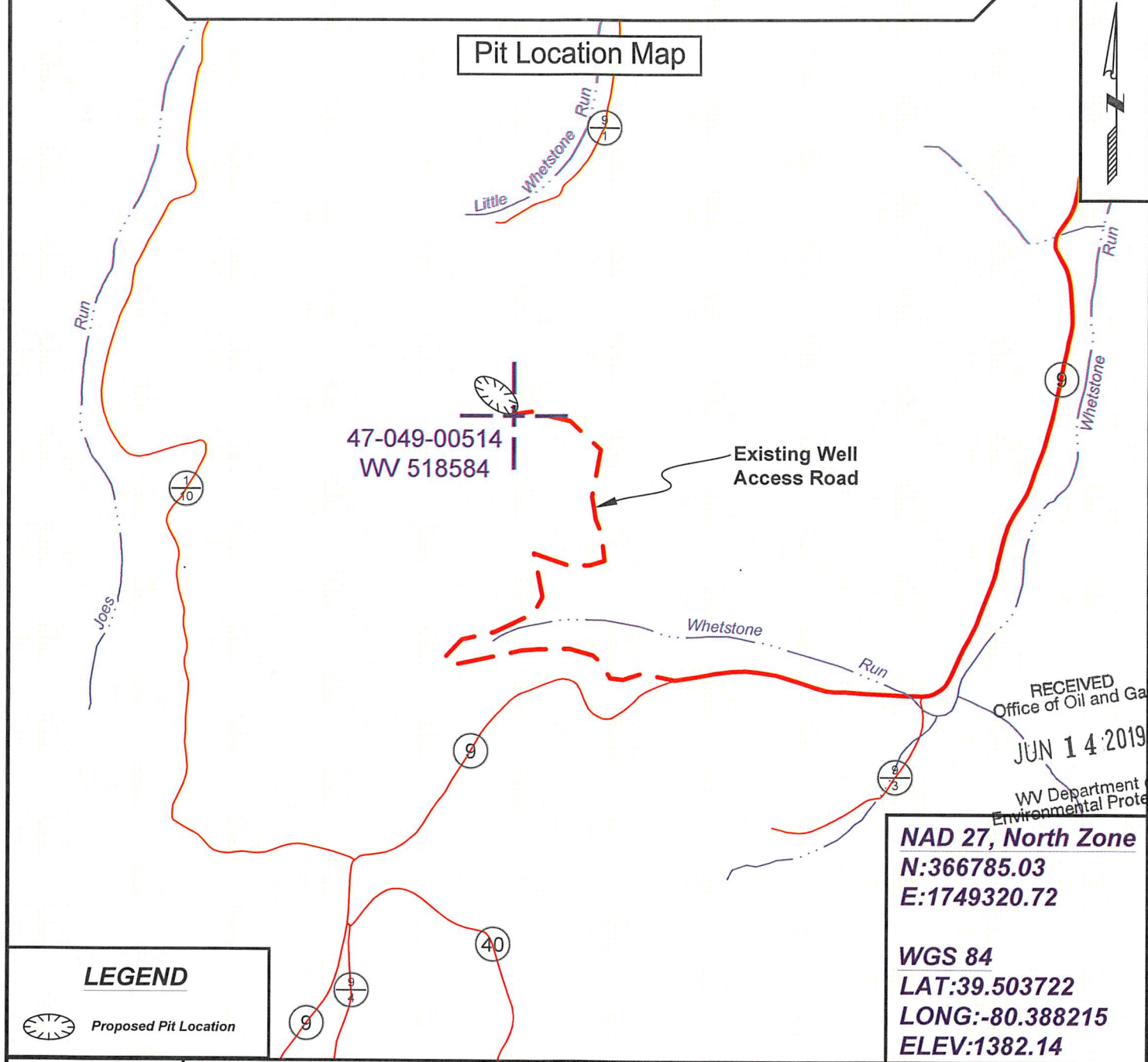
District: Mannington

Project No: 74-18-00-08

Highway

47-049-00514 WV 518584 (J. L. Erwin #6)

Pit Location Map



LEGEND



Proposed Pit Location

NAD 27, North Zone
N:366785.03
E:1749320.72

WGS 84
LAT:39.503722
LONG:-80.388215
ELEV:1382.14



SURVEYING AND MAPPING SERVICES PERFORMED BY:

ALLEGHENY SURVEYS, INC.

1-800-482-8606
237 Birch River Road
Birch River, WV 26610
PH: (304) 649-8606
FAX: (304) 649-8608

PREPARED FOR:

EQT Production Company

2400 Ansys Drive, Suite 200
Canonsburg, PA 15317