



West Virginia Department of Environmental Protection
Office of Oil and Gas
WELL LOCATION FORM: GPS

API: 47-049-00371P WELL NO.: WV 451741 (Campbell #2484)

FARM NAME: Campbell

RESPONSIBLE PARTY NAME: EQT Production Company

COUNTY: Marion DISTRICT: Mannington

QUADRANGLE: Glover Gap 7.5'

SURFACE OWNER: Steven Newbraugh

ROYALTY OWNER: Jesse L. Straight et. al.

UTM GPS NORTHING: 4,381,909

UTM GPS EASTING: 546,207 GPS ELEVATION: 427 m (1402 ft)

The Responsible Party named above has chosen to submit GPS coordinates in lieu of preparing a new well location plat for a plugging permit or assigned API number on the above well. The Office of Oil and Gas will not accept GPS coordinates that do not meet the following requirements:

- Datum: NAD 1983, Zone: 17 North, Coordinate Units: meters, Altitude: height above mean sea level (MSL) – meters.
- Accuracy to Datum – 3.05 meters
- Data Collection Method:
Survey grade GPS _____: Post Processed Differential _____
Real-Time Differential _____
Mapping Grade GPS X: Post Processed Differential X
Real-Time Differential _____
- Letter size copy of the topography map showing the well location**

I the undersigned, hereby certify this data is correct to the best of my knowledge and belief and shows all the information required by law and the regulations issued and prescribed by the Office of Oil and Gas.

Ben H. Singletary
Signature
9-16-2011
Date

P.S. 2092
Title

RECEIVED
Office of Oil & Gas
DEC 08 2011
WV Department of
Environmental Protection

Topo Quad: Glover Gap

Scale: 1" = 2000' 44-00371P

County: Marion

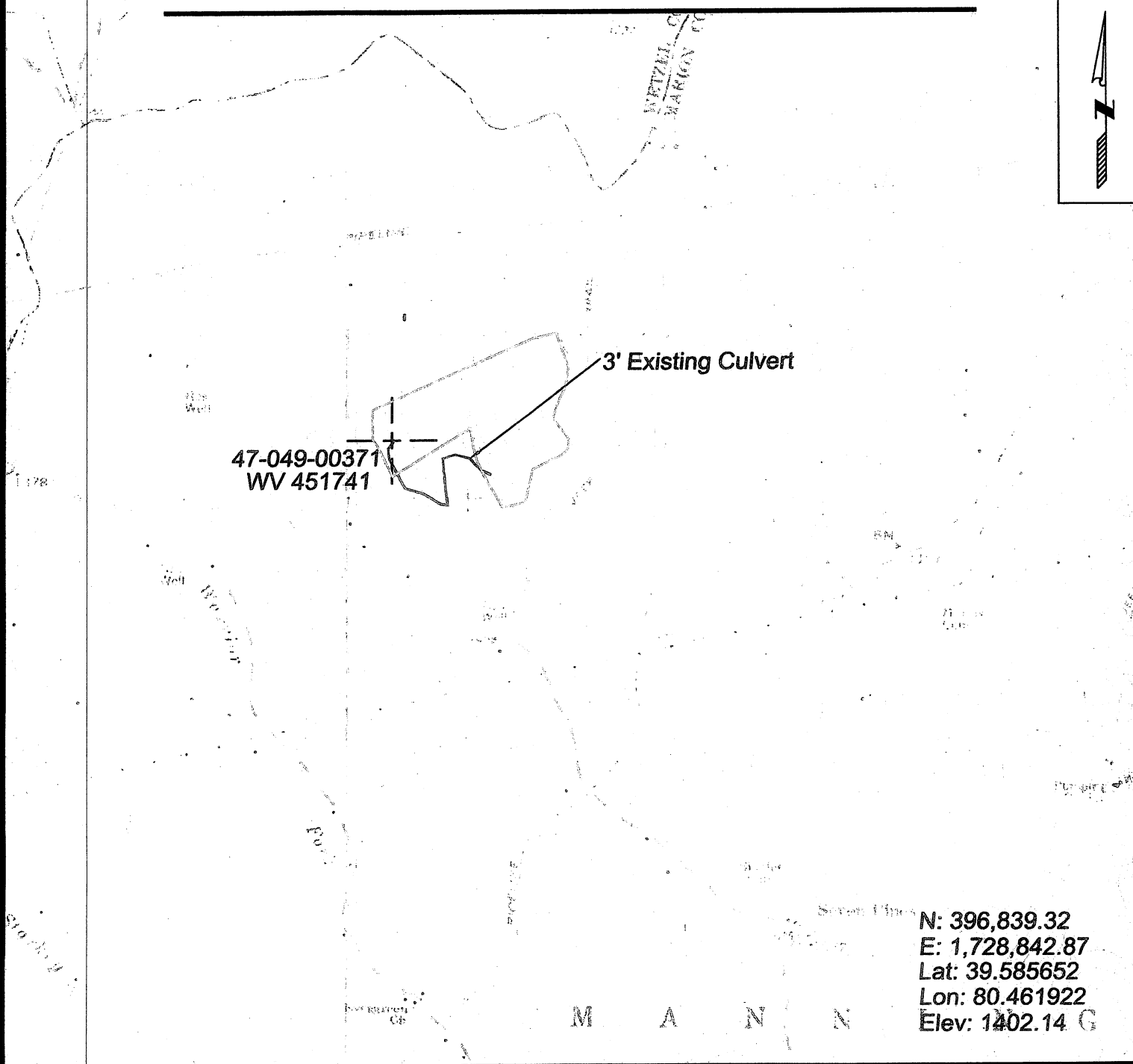
Date: Aug. 2, 2011

District: Mannington

Project No: 74-18-00-08

47-049-00371 (WV 451741)

Topo



47-049-00371
WV 451741

3' Existing Culvert

N: 396,839.32
E: 1,728,842.87
Lat: 39.585652
Lon: 80.461922
Elev: 1402.14 G



SURVEYING AND MAPPING SERVICES PERFORMED BY:
ALLEGHENY SURVEYS, INC.

1-800-482-8606
P.O. BOX 438
BIRCH RIVER, WV 26610
PH: (304) 649-8606
FAX: (304) 649-8608

PREPARED FOR:

EQT Production Company

1710 Pennsylvania Ave.
Charleston, WV 25302