

7.5 loc
 1.815 39 27 30
 0.66 W 80 00
 SURFACE ~ R. R. FINCH
 ROUTE 1, HAMMOND, W.VA.
 COAL - EASTERN GAS & FUEL ASSOC.
 GRANT TOWN, W.VA.

New Location
 Drill Deeper
 Abandonment

Company Allegheny Land and Mineral Co.
 Address PO Box 1740 - Clarksburg W.Va. 26301
 Farm R. R. FINCH
 Tract _____ Acres 61 Lease No. 108 253
 Well (Farm) No. FINCH (A) 1 Serial No. _____
 Elevation (Spirit Level) 1341
 Quadrangle FAIRMONT & 15' NE
 County MARION District WINFIELD
 Engineer Roll. M. Patterson
 Engineer's Registration No. 3637
 File No. 61-6-100 drawing No. 1
 Date 6/16/61 Scale 1"=400'

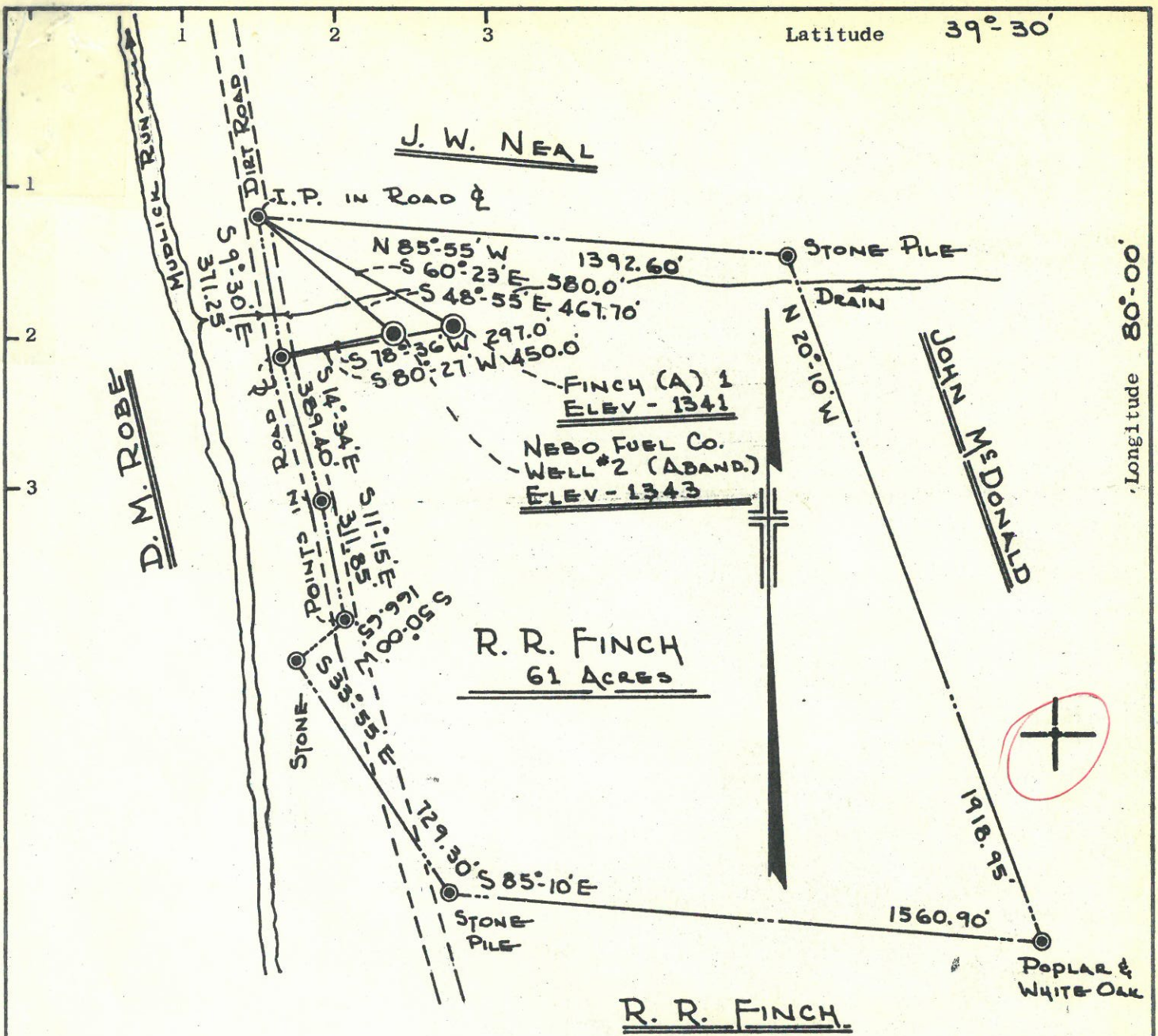
STATE OF WEST VIRGINIA
 Department of Mines
 OIL AND GAS DIVISION
 CHARLESTON

WELL LOCATION MAP
 FILE NO. MAR-244-Red.

+ Denotes location of well on United States Topographic Maps, scale 1 to 62,500, latitude and longitude lines being represented by border lines as shown.

- Denotes one inch spaces on border line of original tracing

JUN 13 1983
 47-049



0.63 W
4.77

SURFACE ~ R. R. FINCH
ROUTE 1, HAMMOND, W.VA.
COAL - EASTERN GAS & FUEL ASSOC
GRANT TOWN, W.VA.

New Location
Drill Deeper
Abandonment

JUL 3 1961

Company	PHILLIPS PETROLEUM Co.
Address	BARTLESVILLE, OKLAHOMA
Farm	R. R. FINCH
Tract	Acres 61 Lease No 108 253
Well (Farm) No	FINCH (A) 1 Serial No.
Elevation (Spirit Level)	1341
Quadrangle	FAIRMONT
County	MARION District WINFIELD
Engineer	<i>R. M. Patterson</i>
Engineer's Registration No.	3637
File No.	61-6-100 drawing No. 1
Date	6/16/61 Scale 1"-400'

STATE OF WEST VIRGINIA
Department of Mines
OIL AND GAS DIVISION
CHARLESTON

WELL LOCATION MAP
FILE NO. MAR-244

+ Denotes location of well on United States Topographic Maps, scale 1 to 62,500, latitude and longitude lines being represented by border lines as shown.

- Denotes one inch spaces on border line of original tracing

Deep Well

R. R. FINCH "A" NO. 1 - PHILLIPS PETROLEUM 6-MAR-244



STATE OF WEST VIRGINIA
DEPARTMENT OF MINES
OIL AND GAS DIVISION 21

Quadrangle Fairmont

Permit No. MAR-244

WELL RECORD

Oil or Gas Well DRY
(KIND)

Company Phillips Petroleum Company
Address Bartlesville, Oklahoma
Farm Finch "A" Acres 61
Location (waters) Mudlick Run
Well No. One Elev. 1341.78 DF
District Winfield County Marion
The surface of tract is owned in fee by R.R. Finch and Floda M. Finch, his wife Address Rte 1, Hammond, W. Virg.
Mineral rights are owned by R. R. Finch and Floda M. Finch, his wife Address Rte 1, Hammond, W. Virg.
Drilling commenced 7-27-61
Drilling completed 5-28-62
Date Shot - From - To -
With -
Open Flow /10ths Water in - Inch
- /10ths Merc. in - Inch
Volume See Attachment Cu. Ft.
Rock Pressure - lbs. - hrs.
Oil - bbls., 1st 24 hrs.
WELL ACIDIZED See Attachment
WELL FRACTURED See Attachment

Casing and Tubing	Used in Drilling	Left in Well	Packers
Size			Kind of Packer
20"	60'	60'	
13-3/8"	989'	989'	Size of
9-5/8"	7508'	7508'	Depth set
8 1/4"			Perf. top <u>SEE</u>
6 1/2"			Perf. bottom <u>ATTACH-</u>
5-1/2"	14483'	4120'	Perf. top <u>MENTS</u>
3"			Perf. bottom
2"			
Liners Used			

CASING CEMENTED SIZE No. Ft. Date
See Attachment

COAL WAS ENCOUNTERED AT NONE FEET INCHES
FEET INCHES FEET INCHES
FEET INCHES FEET INCHES

RESULT AFTER TREATMENT -
ROCK PRESSURE AFTER TREATMENT -
Fresh Water Feet Salt Water Feet

Formation	Color	Hard or Soft	Top	Bottom	Oil, Gas or Water	Depth	Remarks
Rock	Gray		0	60			20" Csg @ 60'
Rock	Gray		60	138			RKB, 26.11' Below
Rock & Sand	Gray		138	183			RKB. See Attach.
Sand			183	237			for Cement
Rock			237	298			
Rock & Shale			298	327			
Rock, Shale & Sand			327	355			
Sand & Shale			355	420			
Shale			420	453			
Sand & Shale			453	580			
Shale			580	702			
Sandy Shale & Shale			702	741			
Lime			741	762			
Sand & Lime			762	811			
Lime			811	821			
Sand			821	859			
Sand & Lime			859	905			
Sand & Shale			905	958			
Shale & Dolomite			958	966			
Dolomite			966	989			13-3/8" @ 989'
Shale			989	1296			RKB. See Attach.
Sand & Sandy Shale			1296	1507			for Cement.
Shale & Lime			1507	1623			
Red Shale & Sand			1623	3450			
Shale			3450	3529			
Shale & Sand			3529	4807			
Shale			4807	5265			
Shale & Sand			5265	5510			
Shale			5510	5767			
Shale & Sand			5767	5878			



(over)

APR 29 1963

(Page 1)

R. R. FINCH "A" NO. 1 - PHILLIPS PETROLEUM CO - MAR-244

Formation	Color	Hard or Soft	Top 2 /	Bottom	Oil, Gas or Water	Depth Found	Remarks
Shale			5878	6816			
Lime			6816	6872	Gas	6821'	Small Show
Shale			6872	7175			
Lime & Chert			7175	7216			
Chert			7216	7240			
Chert & Lime			7240	7348	Gas	7260'	Small Show
Shale & Chert			7348	7385			
Shale & Lime			7385	7391			
Chert			7391	7409			
Chert & Sand			7409	7411			
Chert			7411	7415			
Sand			7415	7474			
Shale, Sand & Lime			7474	7510			9-5/8" @ 7508'.
Air Dust			7510	7531			See Attach. for Cement.
Lime & Shale			7531	7600			
Shale			7600	7723			
Shale & Lime			7723	7852			
Lime & Chert			7852	8023			
Shale & Lime			8023	8131			
Salt			8131	8344			
Shale			8344	8354			
Salt			8354	8380			
Shale			8380	8424			
Lime			8424	8464			
Lime & Shale			8464	8503			
Shale			8503	8574			
Lime & Shale			8574	8716			
Shale			8716	8786			
Lime & Shale Streaks			8786	8842			
Lime & Shale			8842	9130			
Shale			9130	9773			
Shale w/Dolomite Strks			9773	9896			
Shale			9896	9940			
Sand & Hard			9940	9970			
Sand & Shale			9970	10067			
Hard Sand w/Shale Strks			10067	10120			
Hard Sand			10120	10193	Gas	10135'	Small Show
Sand & Shale			10193	10242			
Sand - Hard			10242	10280			
Red Shale			10280	10293			
Sand			10293	10333			
Sand & Shale			10333	10417			
Shale			10417	10553			
Shale & Sandy Shale			10553	11082			
Sandy Shale & Shale			11082	11162			
Sandy Shale w/Lime			11162	11203			
Sand & Shale			11203	11301			
Shale			11301	11317			
Shale & Sandy Shale			11317	11357			
Shale			11357	11369			
Shale & Sand			11369	11396			
Shale & Lime Streaks			11396	11410			
Shale & Lime			11410	11424			
Shale			11424	11441			
Sand & Shale			11441	11459			
Shale			11459	11463			
Shale & Sand Streaks			11463	11477			
Shale			11477	11580			
Sandy Shale & Shale			11580	11599			
Shale & Sand Streaks			11599	11623			
Shale			11623	12051			
Shale & Streaks Sand & Shale			12051	12091			
Shale			12091	12112			
Shale & Streaks Sandy Shale			12112	12131			
Shale			12131	12736	Gas	12450'	Small Show
Shale, Sand & Lime			12736	12758			

Date _____, 19____

APPROVED _____, Owner

By A.T. Stagle
(Title)

2/A1

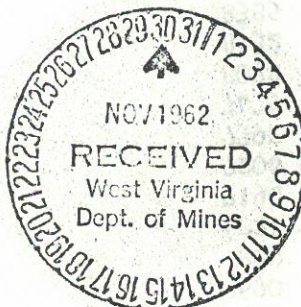
MAR-244

Formation	Color	Hard or Soft	Top	Bottom	Oil, Gas or Wtr	Depth Found	Remarks
Shaley Sand			12758	12768			
Shale			12768	12917	Gas	12870)	Small Show
Shale & Lime Streaks			12917	12946		12880)	
Shale			12946	13131	Gas	13045	Small Show
Shale & Lime Streaks			13131	13475	Gas	13269	Small Show
Shale			13475	13486			
Shale & Lime			13486	13698			
Lime, Sand & Shale			13698	13742			
Shale & Lime			13742	13853			
Lime			13853	14016			
Lime & Shale			14016	14022	Gas	14250-86	Small Show
Lime			14022	14641	Gas	14320	Small Show
Lime & Dolomite			14641	14654			5-1/2" Csg @
Lime			14654	14717			14482.62'. See
Lime & Dolomite			14717	14721			Attach. for
Dolomite			14721	14760			Cement.
Lime & Dolomite Streaks			14760	14798			
Dolomite			14798	14807			
Dolomite & Lime			14807	15105			
Dolomite			15105	15148			
Dolomite & Lime			15148	15172			
Dolomite			15172	15974			
Lime & Dolomite			15974	16057			
Dolomite & Lime			16057	16078			
Dolomite			16078	17111			

Dr. l. r.'s TD
17111'
Schlumberger
TD 17119'
PBTB 7485'

[Faint, mirrored text bleed-through from the reverse side of the page, including words like "Dolomite", "Lime", and "Shale"]

[Handwritten initials in red ink]



7216
1341
3863

APR 29 1963

(Page 3)

R. R. FINCH A. 1101 - PHILLIPS PETROLEUM CO. MAR-244

21A^L

MAR-244

PHILLIPS PETROLEUM COMPANY

FINCH "A" NO. 1

<u>FORMATIONS</u>	<u>ELECTRIC LOG TOPS</u>
Base Penn/Top Miss.	466
Greenbrier Ls	690
Big Injun Sd	809
Tully Ls	6821
Onondaga Ls	7190
Onondaga Chert	7206
Oriskany Sd	7392
Helderberg Ls	7475
Top Silurian	8078
Salt	8132
Base Salt	8385
Clinton Shale	9496
Tuscarora Ss	10062
Juniata Shale (Top Ord.)	10371
Martinsburg Shale	11378
Trenton Ls	13058
Black River Ls	13524
Chazy Ls	13950
Glenwood	14507
Beekmantown Dolo	16012
Driller TD	17111
Schlumberger TD	17119
Present Plugged Back Total Depth	7485

MAR-244

Drilled to a TD of 17111'. Filled with mud and set 5½" casing at 14483'. Cemented casing leaving 137' of cement in pipe to a plugged back total depth of 14346'. After perforating 5½" casing 14230' to 14286' in Chazy formation had light show of gas. Attempted to acidize through perforations with packer set at 14004'. Pumped 13 bbls of salt water into formation followed by 12 bbls acid and 89 bbls of salt water at a maximum pressure of 9500#. Completed treatment at 3:25 p.m., 6-12-62. Flowed 13 bbls salt water in 2½ hours, then swabbed 96 bbls of salt water in 6 hours. Had very small show of gas. Shut in 2 hours. No pressure. Swabbed 2½ bbls SW in 1 hour. Shut in 4 hours. 25# pressure. Blew down. Not enough gas to measure.

Pushed packer to 14344'. Reperforated 5½" casing from 14230' to 14286'. Set packer at 14009'. Swabbed down through 2-7/8" OD tubing. Had very small show of gas but not enough to measure. Shut in for 9½ hours. No shut-in pressure. Opened well at 4:30 a.m., 6-19-62. Had slight show of gas. Loaded tubing with 65½ bbls salt water. Pumped 8 bbls salt water into formation through perforations 14230' to 14286' at 7200# pressure. Acidized through perforations with 1000 gallons 15% regular acid. Used a total of 81 bbls of salt water. Completed at 9:59 a.m., 6-19-62. Shut in for 1 hour 25 minutes. Well flowed 16 bbls salt water then swabbed 65 bbls salt water and 17 bbls acid water in 6½ hours. Had small show of gas. Shut in for 9 hours. Shut-in pressure 36#. Bled well down. Not enough gas to test.

Loaded tubing with 60 bbls salt water with packer at 14009'. Spotted 2500 gallons acid. Pumped in acid at 8700# pressure. Displaced with 88 bbls salt water. Completed at 7:40 a.m., 6-20-62. Shut-in pressure for 20 minutes 8000#. Opened well at 9:15 a.m. Flowed 20 bbls salt water. Shut in 10 minutes, opened at 9:40 a.m. Flowed 8 bbls salt water in 40 minutes. Swabbed 60 bbls salt water and 50 bbls dirty acid water in 6 hours. Had no fluid in hole and no show of gas. Loaded tubing with 84 bbls of salt water. Displaced salt water with 11.4# mud. Pumped 14 bbls of fresh water down tubing. Pumped in 50 sx of Uniflow Pozmix cement 15.3# slurry. Displaced cement with 6 bbls fresh water and 74½ bbls of mud. 5½" casing filled with cement to 13605'.

Perforated 5½" casing in Trenton from 13452' to 13484'. Set packed at 13357'. Displaced mud out of tubing with 78½ bbls salt water. Swabbed back 58 bbls salt water with no show of gas. Loaded tubing with 58 bbls salt water. Pumped 12 bbls into formation through perforations at 9500# pressure. Reversed salt water out of tubing with drilling fluid. Pumped 4 bbls salt water down tubing followed by 500 gallons 15% acid. Displaced acid into formation with 18 bbls salt water at maximum pressure of 9500#. Acid job completed at 4:35 p.m., 6-25-62. Shut-in pressure for 1 hour after acid job 8800#. Opened well at 5:35 p.m. and well flowed back 6 bbls salt water. Started swabbing at 7:00 p.m. recovering 67 bbls salt water load and 9 bbls of salty acid water. Had small show of gas. Shut well in at 12:00 midnight. Opened well at 6:00 a.m., 6-26-62. Tested 1,940 cu.ft. of gas per day.

Loaded tubing at 3:30 a.m., 6-27-62 with 52 bbls salt water. Reversed salt water out of tubing with 78 bbls of drilling mud. Acidized Trenton through perforations 13452' to 13484' with 1500 gallons 15% acid. Displaced acid with 40 bbls of salt water at maximum pressure of 9100#. Completed treatment at 7:06 a.m., 6-27-62. Shut-in pressure after 1 hour 8500#. Opened well at 8:30 a.m. Flowed 40 bbls salt water. Started swabbing at 10:30 a.m. Swabbed down and gas tested 13,400 cu.ft. per day. Shut in for 11½ hours with 185# pressure.

(Page 5)

MAR-244

Bled pressure off of well at 3:35 a.m., 6-28-62. Acidized through perforations 13452' to 13484' with 3000 gallons 15% acid. Maximum pressure 9200#. Completed at 6:26 a.m. Released pressure off of casing and tubing. Reversed salt water out of tubing. Loaded tubing with 76 bbls salt water and pressured to 8900#. Released pressure and started swabbing at 12:30 a.m., 6-29-62. Swabbed down and tested 1,490 cu.ft. of gas per day. Shut-in pressure after 15 hrs 155#. Bled off pressure.

Acidized Trenton through perforations 13452' to 13484' with 5000 gallons 15% acid at maximum pressure of 9200#. Displaced acid with 95 bbls salt water. Completed treatment at 8:38 a.m., 6-30-62. Shut-in pressure for 1½ hours 8700#. Bled well down. Flowed 40 bbls salt water. Started swabbing at 12:05 p.m., 6-30-62. Well swabbed down at 4:45 p.m. with no show of gas. At 6:45 p.m. had small show of gas. Started test at 12:00 midnight, 6-30-62. Off test at 7:00 a.m., 7-1-62. Test showed 24,700 cu.ft. of gas per day. Loaded hole with 11.4# drilling mud and pushed packer to 13605'.

Set 5½" x 20" CI bridge plug at 13445'. Perforated 5½" casing in Upper Trenton from 13366' to 13432'. Perforated Upper Trenton 13339' to 13349', 13322' to 13333', 13314' to 13318', 13272' to 13303' and 13207' to 13250'. Set 5½" x 24" Baker Packer at 13107'. Displaced drilling mud out of tubing with 76 bbls salt water. Opened well at 9:00 a.m., 7-9-62. Well flowed 10 bbls salt water load. Swabbed well down. Put on test at 12:00 noon. Tested at rate of 155,570 cu.ft. of gas per day. Acidized Upper Trenton with 2000 gallons 15% acid down 2-7/8" tubing. Displaced acid with 98 bbls salt water. Completed at 3:57 p.m. Maximum pressure 9300#. Shut-in pressure after 1 hour 8800#. Opened well at 6:57 p.m. Flowed 32 bbls salt water. Swabbed 5 hours recovering 66 bbls salt water and 27 bbls of acid water. Took gas test at 2:00 a.m., 7-10-62. Tested at rate of 97,000 cu.ft. of gas per day. At 4:00am tested at rate of 97,250 cu.ft. of gas per day. Test from 12:00 midnight, 7-10-62, to 4:00 a.m., 7-11-62 at rate of 102,930 cu.ft. of gas per day.

Acidized Upper Trenton with 10,000 gallons 15% acid. Treatment completed at 9:07 a.m. 7-11-62. Maximum pressure 9500#. Shut-in pressure after 1 hour 8800#. Opened well at 10:07 a.m. Flowed 2 hours 58 minutes. Recovered 94 bbls salt water and 35 bbls acid water. Gas then tested at rate of 193,000 cu.ft. per day. Shut-in pressure after 24 hours 7325#. Shut-in pressure after 45 hours 9100#. Blew well down and after 24 hours tested at rate of 258,260 cu.ft. of gas per day.

Acidized Upper Trenton with 30,000 gallons 15% Reg. acid with F-33 surface tension reducer added. Completed at 12:13 p.m., 7-20-62. Maximum pressure 9200#. Displaced acid with 85 bbls salt water. Opened well at 2:15 p.m. Flowed 85 bbls salt water and 57 bbls acid water. Swabbed 202 bbls acid water. Well tested at rate of 109,940 cu.ft. of gas per day. Four-hour shut-in pressure 610#. Bled well down. Then tested at rate of 130,600 cu.ft. of gas per day.

Filled hole with 11.7# drilling mud and set retainer at 13082'. Squeeze cemented perforations with 35 sx Uniflow cement leaving 3' of cement on top of retainer for PBSD of 13079'. Completed at 7:00 a.m., 7-26-62. Perforated 5½" casing from 12990' to 13045'. Set Baker Model D Packer at 12954' RKB. Ran 2-7/8" tubing to 12954'. Displaced mud in tubing with 75 bbls salt water. Opened well at 2:05 p.m. and started swabbing at 3:00 p.m. Swabbed to 11000' and at 9:30 p.m. had slight show of gas. Swabbed and tested from 9:30 a.m., 7-27-62, to 5:00 p.m., 7-28-62. Tested at rate of 36,500 cu.ft. per day. Loaded hole with 76 bbls of salt water. Pumped into formation at 9300#. Thirty-minute shut-in pressure 7200#. Bled well down and had show of gas at 1:30 a.m., 7-29-62. After unloading hole well tested at rate of 182,000

APR 29 1963

(Page 7)

R.R. FINCH 914001 - PHILLIPS PETROLEUM CO. MAR-244

MAR-244

cu.ft. per day. Shut in at 6:30 p.m., 7-29-62. At 6:00 p.m., 7-30-62 shut-in pressure was 3750#. Squeezed perforations from 12990' to 13045' with 60 sx Uniflow cement 8-2-62. Filled hole with mud and spotted 30 sx Uniflow cement from 12909' to 12609'. Hole filled with 11.3# mud on top of cement plug.

Cut 5 $\frac{1}{2}$ " casing off at 10283'. Pulled out 310 jts 10363' over-all measurement. Ran 2-7/8" tubing open ended and set cement plug with 125 sx Uniflow cement from 10280' to 9880'. Mudded to 7560'. Set cement plug with 45 sx Uniflow cement from 7560' to 7485' or 33' above 9-5/8" casing seat. Completed 8-5-62. PSTD 7485'.

Perforated 9-5/8" casing from 7314' to 7374'. Set packer at 7302'. Ran 2-7/8" OD tubing and swabbed down to 7000'. Had slight show of gas.

Fraced through perforations from 7314' to 7374'. Loaded hole with 74 bbls gelled salt water. Pumped into formation with 12 bbls gelled salt water at 4600# to 4100# pressure. Fraced with 200 gallons 15% acid, 18,800 gallons gelled salt water and 17,000# of 20-40 mesh sand. Flushed with 55 bbls gelled salt water. Maximum pressure 6300#. Minimum pressure 5600#. Shut in for 8 hours. Pressure 2600#. Opened well at 4:30 p.m., 8-8-62. Flowed approximately 350 bbls of frac water. Gas tested at rate of 145,000 cu.ft. per day. Shut in at 4:05 p.m., 8-9-62 for shut-in pressure. Pressure at 4:00 p.m., 8-10-62 was 1965#. Blew well down and tested at rate of 173,000 cu.ft. of gas per day. Killed well with 42 bbls of drilling mud.

Perforated 9-5/8" casing from 7270' to 7290' and from 7207' to 7250'. Set packer at 7180'. Ran 2-7/8" tubing to swab well. Swabbed well down and tested at rate of 171,000 cu.ft. of gas per day. Fraced through perforations 7207' to 7250' and 7270' to 7290'. Loaded tubing with 42 bbls salt water then flushed with 70 bbls salt water. Used 200 gallons 15% acid, 20,000 gallons gelled salt water and 20,000# 20-40 mesh sand. Flushed with 52 bbls salt water. Maximum pressure 6900#, minimum 6650#. Maximum flushing pressure 8000#. After 8 hours shut-in pressure was 2600#. Opened well at 5:00 p.m., 8-13-62. Flowed 250 bbls frac water. Swabbed through tubing for 24 hours. Gas tested at rate of 109,940 cu.ft. per day. Swabbed through tubing for 24 hours. Gas tested at rate of 134,660 cu.ft. per day. Swabbed and tested from 8-18-62 to 8-26-62. Final test well made 151,400 cu.ft. of gas per day. Shut in 24 hours. Shut-in pressure 2100#. Blew well down. Shut in 24 hours. Shut-in pressure 2400#. On 8-30-62 blew well down and tested at rate of 280,300 cu.ft. of gas per day. Shut in until 9-5-62. Shut-in pressure 2725#. Blew well down and tested at rate of 408,120 cu.ft. of gas per day. Shut in until 9-11-62. Blew well down and tested at rate of 400,796 cu.ft. of gas per day. Shut-in pressure after 18 hours, 2250#. Well shut in at 1:00 p.m., 9-12-62.

PHILLIPS PETROLEUM COMPANY

FINCH "A" NO. 1

MAR-244

CASING CEMENTED

SIZE	FEET	PERFORATIONS	NUMBER SACKS	DATE
20"	60'	-	16	7-28-61
13-3/8"	989'	-	200	8-9-61
9-5/8"	7508'	-	200	9-15-61
9-5/8"		6925'	820 Reg.	10-28-61
9-5/8"		6925'	820 Lite Poz 2	10-28-61
9-5/8"		3700'	400 Reg.	10-30-61
9-5/8"		3700'	400 Lite Poz 2	10-30-61
9-5/8"		1375'	275 Reg.	11-2-61) Circulate
9-5/8"		1375'	275 Lite Poz 2	11-2-61) To
9-5/8"		1375'	50 Neat	11-2-61) Surface
9-5/8"		1375'	100 Reg.	11-4-61 Squeezed
9-5/8"		1375'	100 Reg.	11-5-61 Squeezed
9-5/8"		1375'	100 Reg.	11-5-61 Squeezed
9-5/8"		3700'	100 Reg.	11-7-61 Squeezed
5-1/2"	14483'	-	335 Com.	6-3-62
5-1/2"		-	12,600# Diacel D	6-3-62
5-1/2"		-	220# Diacel WL	6-3-62
5-1/2"		14230-14286'	50 Uniflow Pozmix	6-23-62 Squeezed
5-1/2"		13452-13484'	-	
5-1/2"		13366-13432')		
5-1/2"		13339-13349')		
5-1/2"		13322-13333')	35 Uniflow	7-26-62 Squeezed
5-1/2"		13314-13318')		
5-1/2"		13272-13303')		
5-1/2"		13207-13250')		
5-1/2"		12990-13045'	60 Uniflow	8-2-62 Squeezed

Handwritten initials/signature

WVK-Sitt

APR 29 1963

Handwritten signature

R. R. FINCH No. 1 - PHILLIPS PETROLEUM Co MAR-244

MAR-244

PHILLIPS PETROLEUM COMPANY

FINCH "A" NO. 1

EP. 1342

FORMATIONS

ELECTRIC LOG TOPS

Base Penn/Top Miss.		466		
Greenbrier Ls.		690	+652 ✓	7392
Big Injun Sd		809		1342
Tully Ls		6821		<u>6050</u>
Onondaga Ls	} 202	7190	-5848 ✓	
Onondaga Chert		7206		
Oriskany Sd	83	7392	83 6050 ✓	
Helderberg Ls	603	7475	-6133	
Top Silurian		8078		
Salt		8132		
Base Salt		8385	-7043 ✓	} 253
Clinton Shale	566	9496		
Tuscarora Ss	309	10062	-8720 ✓	
Juniata Shale (Top Ord.)	1007	10371	-9029 ✓	
Martinsburg Shale	1680	11378	-10,036 ✓	1600
Trenton Ls	466	13058	-11,716 ✓	450
Black River Ls	426	13524		450
Chazy Ls	557	13950		550
Glenwood	1505	14507		
Beekmantown Dolo	999+	16012	-14,670 ✓	1000
Driller TD		17111		
Schlumberger TD		17119	-15,777 ✓	
Present Plugged Back Total Depth		7485		

7190
6821
 369

Lockport 1111



1) Date: April 26, 1983
 2) Operator's Well No. A-1251 (Finch "A")
 3) API Well No. 47 - 049 - 0244

DRILLING CONTRACTOR:

Development Drilling, Inc.
P. O. Drawer 1740
Clarksburg, West Virginia 26301

STATE OF WEST VIRGINIA
 DEPARTMENT OF MINES, OIL AND GAS DIVISION

State 47 County 049 Permit 0244

RE-WORKING WELL

OIL AND GAS WELL PERMIT APPLICATION

- 4) WELL TYPE: A Oil XXX / Gas XXX /
 B (If "Gas", Production XXX / Underground storage XXX / Deep XXX / Shallow XXX /)
- 5) LOCATION: Elevation: 1341.78 Watershed: Mudlick Run
 District: Winfield County: Marion Quadrangle: Fairmont 7.5'
- 6) WELL OPERATOR ALLEGHENY LAND AND MINERAL COMPANY 11) DESIGNATED AGENT Daniel L. Wheeler
 Address P. O. DRAWER 1740 Address P. O. Drawer 1740
CLARKSBURG, WEST VIRGINIA 26301 Clarksburg, West Virginia 26301
- 7) OIL & GAS ROYALTY OWNER R. R. & Floda M. Finch 12) COAL OPERATOR Eastern Gas & Fuel Association
 Address Route 1 Address Grant Town, West Virginia 26574
Hammond, West Virginia
- 8) SURFACE OWNER R. R. & Floda M. Finch 13) COAL OWNER(S) WITH DECLARATION ON RECORD:
 Address Route 1 Name Eastern Gas & Fuel Association
Hammond, West Virginia Address Grant Town, West Virginia 26574
 Acreage 61
- 9) FIELD SALE (IF MADE) TO: 14) COAL LESSEE WITH DECLARATION ON RECORD:
 Address Consolidated Gas Supply Corporation Name Eastern Gas & Fuel Association
Clarksburg, West Virginia 26301 Address Grant Town, West Virginia 26574
- 10) OIL & GAS INSPECTOR TO BE NOTIFIED
 Name William Blosser (368-9105)
 Address Route 4, Box 317
Fairmont, West Virginia 26554
- 15) PROPOSED WORK: Drill XXX / Drill deeper XXX / Redrill XXX / Fracture or stimulate XXX /
 Plug off old formation XXX / Perforate new formation XXX /
 Other physical change in well (specify) Re-work to 7400'
- 16) GEOLOGICAL TARGET FORMATION, Oriskany
- 17) Estimated depth of completed well, 7400' feet
- 18) Approximate water strata depths: Fresh, XXX feet; salt, XXX feet.
- 19) Approximate coal seam depths: unknown Is coal being mined in the area? Yes XXX / No XXX /

20) CASING AND TUBING PROGRAM

CASING OR TUBING TYPE	SPECIFICATIONS				FOOTAGE INTERVALS		CEMENT FILL-UP OR SACKS (Cubic feet)	PACKERS
	Size	Grade	Weight per ft.	New	Used	For drilling		
Conductor	20"				XX	60'	60'	cement to surface Kinds
Fresh water	13-3/8							
Coal	13-3/8			XX		989'	989'	cement to surface Sizes
Intermediate								
Production	4-1/2		11.81	XX		7400'	7400'	250 Depths set by rule 15.01
Tubing								
Liners								Perforations: Top Bottom

21) EXTRACTION RIGHTS

Check and provide one of the following:

- Included is the lease or leases or other continuing contract or contracts by which I hold the right to extract oil or gas.
 The requirement of Code 22-4-1(c) (1) through (4). (See reverse side for specifics.)

22) ROYALTY PROVISIONS

Is the right to extract, produce or market the oil or gas based upon a lease or other continuing contract or contracts providing for flat well royalty or any similar provision for compensation to the owner of the oil or gas in place which is not inherently related to the volume of oil or gas so extracted, produced or marketed? Yes No

If the answer above is No, nothing additional is needed. If the answer is Yes, you may use Affidavit Form IV-60.

23) Required Copies (See reverse side.)

24) Copies of this Permit Application and the enclosed plat and reclamation plan have been mailed by registered mail or delivered by hand to the above named coal operator, coal owner(s), and coal lessee on or before the day of the mailing or delivery of this Permit Application to the Department of Mines at Charleston, West Virginia.

Notary: [Signature]
 My Commission Expires February 14, 1989

Signed: [Signature]
 Its: Vice President

OFFICE USE ONLY
 DRILLING PERMIT

Permit number 47-049-0244-RED

Date June 10 1983

This permit covering the well operator and well location shown below is evidence of permission granted to drill in accordance with the pertinent legal requirements subject to the conditions contained herein and on the reverse hereof. **Notification must be given to the District Oil and Gas Inspector. (Refer to No. 10) Prior to the construction of roads, locations and pits for any permitted work.** In addition, the well operator or his contractor shall notify the proper district oil and gas inspector 24 hours before actual permitted work has commenced.)

Permit expires February 14, 1989 unless drilling is commenced prior to that date and prosecuted with due diligence.

Bond:	Agent:	Plat:	Casing	Fee
<u>XXX</u>	<u>XXX</u>	<u>XXX</u>	<u>XXX</u>	<u>XXX</u>

Administrator, Office of Oil and Gas

NOTE: Keep one copy of this permit posted at the drilling location.

GEOLOGICAL SURVEY