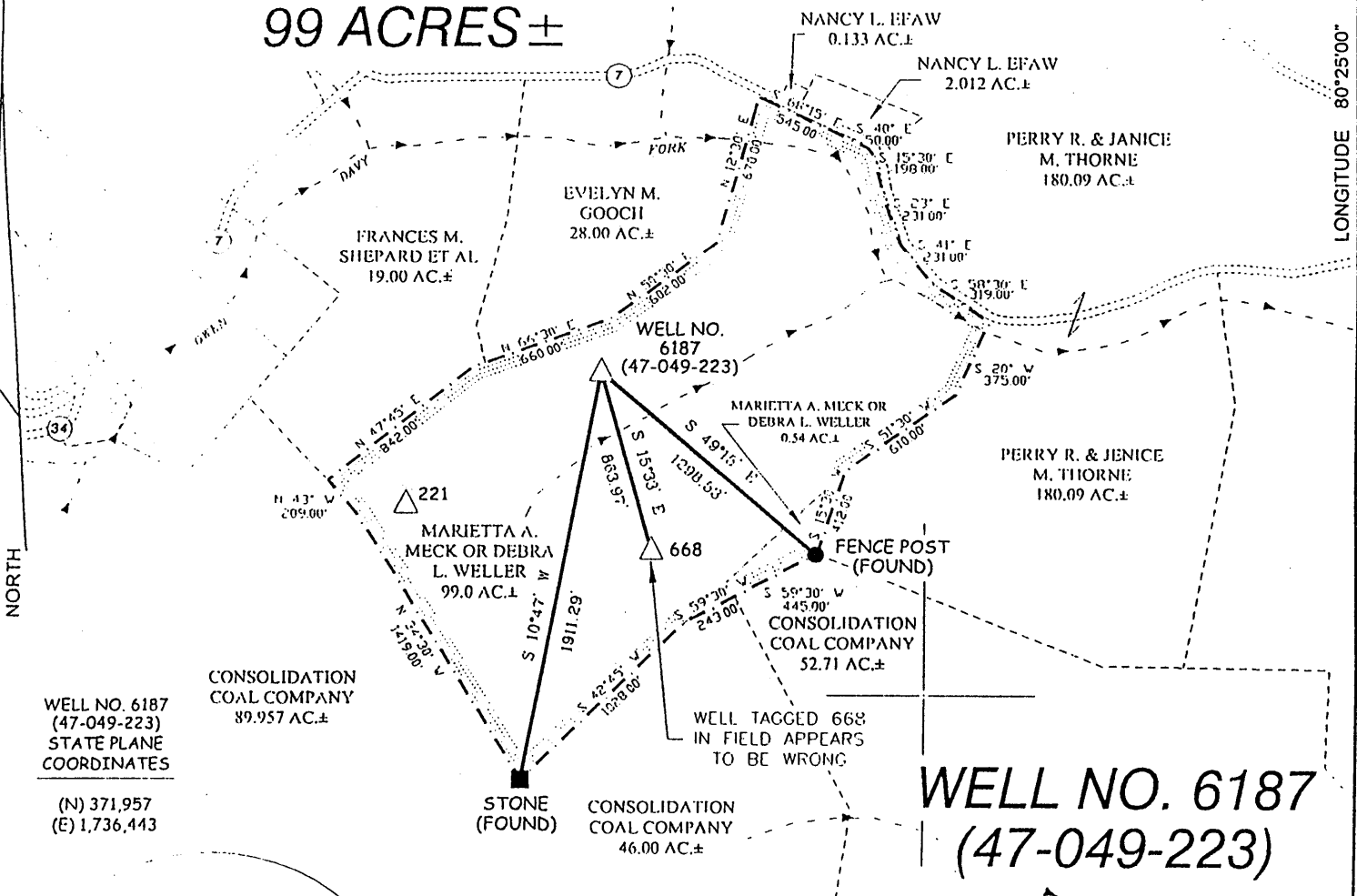


J. M. CORDRAY ET UX LEASE

99 ACRES ±

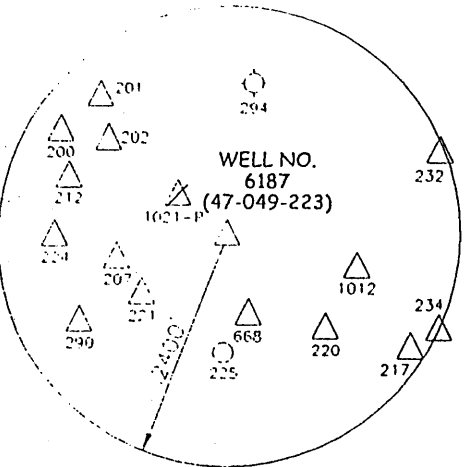
LONG. 80°26'03.2" 4.930' LATITUDE 39°32'30"



WELL NO. 6187
(47-049-223)
STATE PLANE
COORDINATES

(N) 371,957
(E) 1,736,443

WELL NO. 6187
(47-049-223)



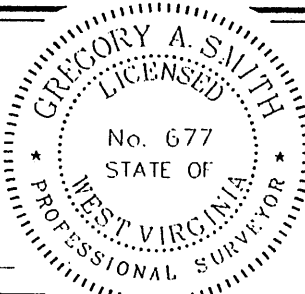
NOTES ON SURVEY

1. TIES TO WELLS AND CORNERS ARE BASED ON GRID NORTH FOR THE WV STATE PLANE COORDINATE SYSTEM NORTH ZONE NAD 27.
2. LEASE BOUNDARY SHOWN HEREON TAKEN FROM A PLAT DATED APRIL 9, 1951 AS PREPARED BY KENNETH B. MOORE FOR A.P.I. NO. 47-049-0223.
3. SURFACE OWNER AND ADJOINER INFORMATION TAKEN FROM THE ASSESSOR AND COUNTY CLERK RECORDS OF MARION COUNTY IN JULY, 2003.
4. WELL LAT./LONG. ESTABLISHED BY DGPS(SUBMETER MAPPING GRADE).



I THE UNDERSIGNED, HEREBY CERTIFY THAT THIS PLAT IS CORRECT TO THE BEST OF MY KNOWLEDGE AND BELIEF AND SHOWS ALL THE INFORMATION REQUIRED BY LAW AND THE REGULATIONS ISSUED AND PRESCRIBED BY THE DIVISION OF ENVIRONMENTAL PROTECTION.

P.S. 677
Gregory A. Smith



(+) DENOTES LOCATION OF WELL ON UNITED STATES TOPOGRAPHIC MAPS.
DATE JULY 23, 20 03
OPERATORS WELL NO. 6187
API WELL NO. 47-049-0223W
STATE COUNTY PERMIT

MINIMUM DEGREE OF ACCURACY 1/2500 FILE NO. 5300P6187 (149-30)
PROVEN SOURCE OF ELEVATION DGPS (SUBMETER MAPPING GRADE) SCALE 1" = 800'

STATE OF WEST VIRGINIA
DIVISION OF ENVIRONMENTAL PROTECTION
OFFICE OF OIL AND GAS

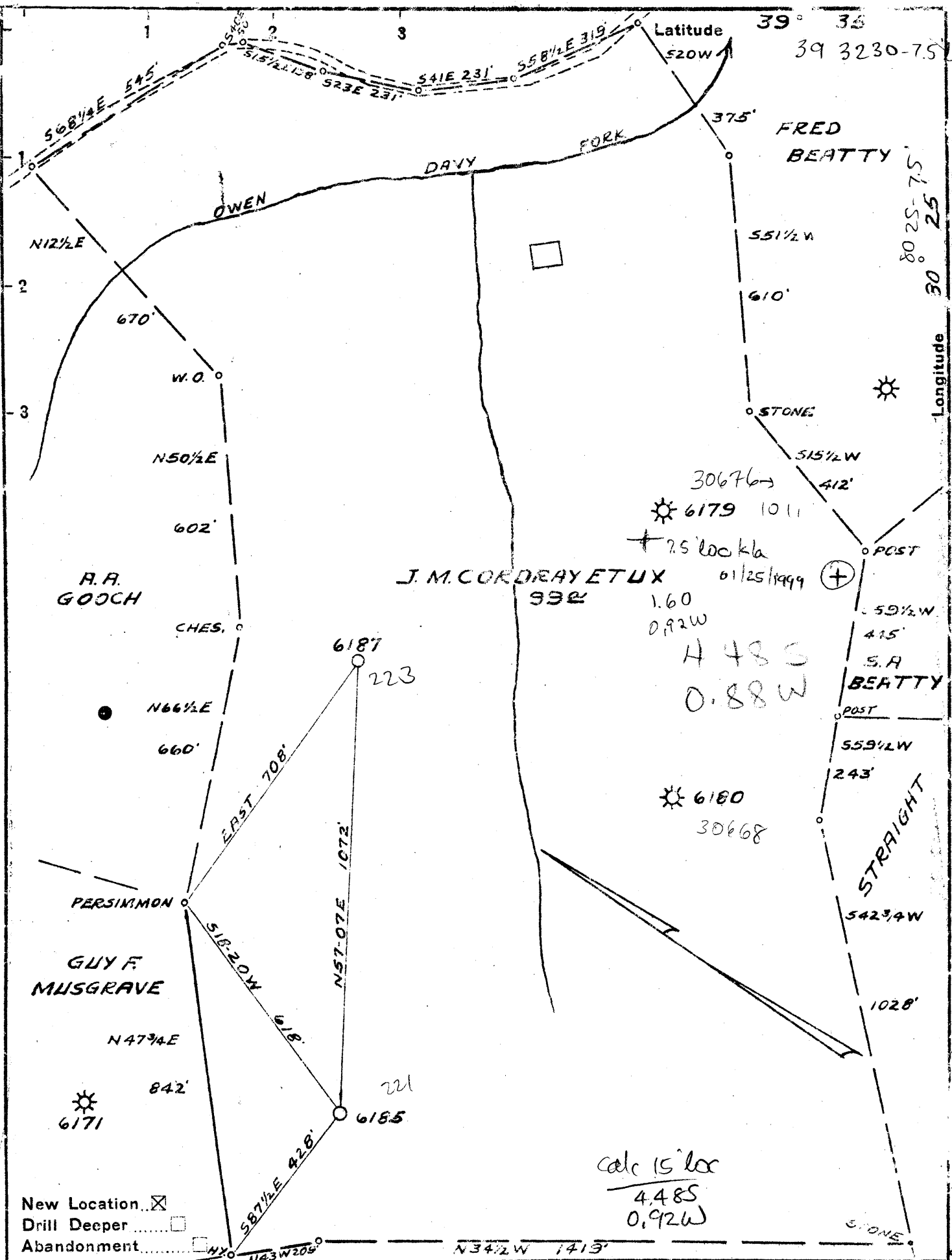
WELL TYPE: OIL GAS LIQUID INJECTION WASTE DISPOSAL IF "GAS" PRODUCTION STORAGE DEEP SHALLOW

LOCATION: ELEVATION 1,168' WATERSHED OWEN
DISTRICT MANNINGTON COUNTY MARION QUADRANGLE GLOVER GAP 7.5'
SURFACE OWNER MARIETTA A. MECK OR DEBRA L. WELLER ACREAGE 99
ROYALTY OWNER HELEN KENDALL, AGENT LEASE ACREAGE 99
PROPOSED WORK: LEASE NO. 124831
DRILL CONVERT DRILL DEEPER REDRILL FRACTURE OR STIMULATE PLUG OFF OLD
FORMATION PERFORATE NEW FORMATION PLUG AND ABANDON CLEAN OUT AND REPLUG OTHER
PHYSICAL CHANGE IN WELL (SPECIFY) "CLEAN UP THROUGH BIG INJUN TARGET FORMATION BIG INJUN & KEENER
AND ACIDIZE KEENER" ESTIMATED DEPTH 2,280'

WELL OPERATOR EQUITRANS, L.P. DESIGNATED AGENT WILLIAM HOSTUTLER
ADDRESS 100 ALLEGHENY CENTER MALL ADDRESS P.O. BOX 1550
PITTSBURGH, PA 15218 CLARKSBURG, WV 26302

COUNTY NAME **MAR**
PERMIT **0223 W**

57-99



Company PITTSBURGH & W.VA. GAS CO.
 Address CLARKSBURG, W.VA.
 Farm J. M. CORDRAY ET UX
 Tract _____ Acres 100 Lease No. 24831
 Well (Farm) No. 4 Serial No. 6187
 Elevation (Spirit Level) 1159'
 Quadrangle MANNINGTON S.W. 43
 County MARION District MANNINGTON
 Engineer Kenneth B. Moore
 Engineer's Registration No. 764
 File No. VOL. 163 P. 43 Drawing No. _____
 Date APRIL 9, 1951 Scale. 1" = 300'

STATE OF WEST VIRGINIA
 DEPARTMENT OF MINES
 OIL AND GAS DIVISION
 CHARLESTON

prob. 1921

WELL LOCATION MAP
 FILE NO. MAR-223-REDRILL

was 04930035

+ Denotes location of well on United States Topographic Maps, scale 1 to 62,500, latitude and longitude lines being represented by border lines as shown.

- Denotes one inch spaces on border line of original tracing.

State of West Virginia
Department of Environmental Protection
Office of Oil and Gas

Well Operator's Report of Well Work

Farm name: M. A. Meck or D. L. Miller

Operator Well No.: 6187

LOCATION: Elevation: 1168'

Quadrangle: Glover Gap 7.5 Degree

District: Mannington

County: Marion

Latitude: _____ Feet South of 39 Deg. 31 Min. 02 Sec.

Longitude _____ Feet West of 80 Deg. 26 Min. 03.3 Sec.

Company: Equitrans, LP

	Casing & Tubing	Used in drilling	Left in well	Cement fill up Cu. Ft.
Address: PO Box 1550	4 1/2"	2290'	2290'	125 sacks
Clarksburg, WV 26302				
Agent: William Hostutler				
Inspector: Terry Urban				
Date Permit Issued: 09-22-03				
Date Well Work Commenced: 10-30-03				
Date Well Work Completed: 12-04-03				
Verbal Plugging:				
Date Permission granted on:				
Rotary X Cable Rig				
Total Depth (feet): 2310'				
Fresh Water Depth (ft.):				
Salt Water Depth (ft.): NA				
Is coal being mined in area (N/Y)? YES				
Coal Depths (ft.): Pittsburgh -843-850'				

OPEN FLOW DATA

Producing formation **Keener Sand (Storage)** Pay zone depth (ft) 2147'-2171'

Gas: Initial open flow NA MCF/d Oil: Initial open flow NA Bbl/d

Final open flow NA MCF/d Final open flow NA Bbl/d

Time of open flow between initial and final tests _____ Hours

Static rock Pressure NA psig (surface pressure) after _____ Hours

Second producing formation _____ Pay zone depth (ft) _____

Gas: Initial open flow _____ MCF/d Oil: Initial open flow _____ Bbl/d

Final open flow _____ MCF/d Final open flow _____ Bbl/d

Time of open flow between initial and final tests _____ Hours

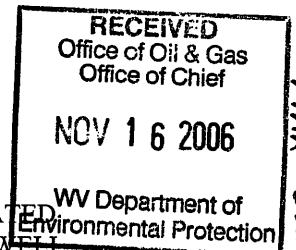
Static rock Pressure _____ psig (surface pressure) after _____ Hours

NOTE: ON BACK OF THIS FORM PUT THE FOLLOWING: 1). DETAILS OF PERFORATED INTERVALS, FRACTURING OR STIMULATING, PHYSICAL CHANGE, ETC. 2). THE WELL LOG WHICH IS A SYSTEMATIC DETAILED GEOLOGICAL RECORD OF ALL FORMATIONS, INCLUDING COAL ENCOUNTERED BY THE WELLBORE.

Signed:

Thomas E. Suhy
By: Thomas E. Suhy Man. Stor Well Ops
Date: 11-14-2006

DEC 15 2006



MAR 0223

The Keener Sand was perforated from 2147'-2170' with
70 shots on December 2, 2003.

Treated with 250 gallons of 20% FE Acid and 750 gallons
of 7.5% FE Acid.

Break down Pressure = 2579 psi

Aug. treating Pressure = 1956 psi

ISIP = 1600 psi

15 minute SIP = 1185 psi.

No measurable flow following treatment.

WEST VIRGINIA DEPARTMENT OF MINES
OIL & GAS DIVISION
W E L L R E C O R D

Permit No. MAR-223-R
Mannington Quad.

Gas Storage

Company	Pittsburgh & West Virginia Gas Co.	CASING & TUBING		
Address	Clarksburg, W. Va.			
Farm	J. M. Cordray Acres. 100	10	383	383
Location	Mann. S/W. 4-3	8 $\frac{1}{4}$	1366	1366
Well No.	6187 Elev. 1159'	6 5/8	2102	2102
Surface	Walter F. Cordray, R.D.#2, Mannington, W.Va.			
Mineral	Same			
Commenced	7/24/51			
Completed	5/2/52			

Well cleaned out to 2247'.

1 6-5/8 Baker Plug set at 2220'

1 Bag Cal-Seal 2220-2215'

Dement 2215 - 2200'

Present Depth 2200'

1 6-5/8" Steel shoe on bottom 6 5/8" Casing.

Run 6 Bags Aquagel and 200 bags cement between 8 1/4" and 6 5/8" Casing.

Mannington District, Marion County, W. Va.
 By South Penn Oil Co., P. O. Drawer 1255, Pittsburgh, Pa.
 On 99 acres, surface and mineral rights owned by Elva Cordray,
 Mannington, W. Va.

Elevation, 1158' L.

16' conductor; 10" casing, 335'; 8½", 1366'; 6-5/8", 2111' 6";
 5-3/16", 2807'; 2" tubing, 2994'.

Coal was encountered at 843-850'.

Abandonment reported to Dept. of Mines April 29, 1931.

Producing hole. (Gas well).

	Top.	Bottom.
Conductor	0	16
Pittsburgh Coal	843	850
Little Dunkard Sand	1195	1278
Big Dunkard Sand	1370	1410
Gas Sand	1535	1595
1st Salt Sand (water, 1648')	1625	1660
2nd Salt Sand	1672	1730
Sand	1735	1904
Marion Sand (oil show, 2049')	2013	2083
Big Line	2083	2147
Big Injun Sand (gas, 2160')	2147	2289
Fifty-foot Sand	2766	2815
Boulder Sand	2890	2910
Gordon Stray Sand (gas, 2978-2988')	2959	2990
Total depth		2994

MAR-35-A

389

Mannington District, Marion County, W. Va.
 By South Penn Oil Co., P. O. Drawer 1255, Pittsburgh, Pa.
 On 99 acres, surface and mineral rights owned by Elva Cordray,
 Mannington, W. Va.
 Elevation, 1158' L.
 16" conductor; 10" casing, 335'; 8 1/2", 1366'; 6-5/8", 2111' 6";
 5-3/16", 2807'; 2" tubing, 2994'.
 Coal was encountered at 843-850'.
 Abandonment reported to Dept. of Mines April 29, 1931.
 Producing hole. (Gas well).

	Top.	Bottom.
Conductor	0	16
Pittsburgh Coal	843	850
Little Dunkard Sand	1195	1278
Big Dunkard Sand	1370	1410
Gas Sand	1535	1595
1st Salt Sand (water, 1648')	1625	1660
2nd Salt Sand	1672	1730
Sand	1735	1904
Maxton Sand (oil show, 2049')	2013	2083
Big Lime	2083	2147
Big Injun Sand (gas, 2160')	2147	2289
Fifty-foot Sand	2766	2815
Boulder Sand	2890	2910
Gordon Stray Sand (gas, 2978-2988')	2959	2990
Total depth		2994

WEST VIRGINIA DEPARTMENT OF MINES
OIL & GAS DIVISION
W E L L R E C O R D

Permit No. MAR-223-R
Mannington Quad.

Gas Storage

Company	Pittsburgh & West Virginia Gas Co.	CASING & TUBING		
Address	Clarksburg, W. Va.			
Farm	J. M. Cordray Acres 100	10	383	383
Location	Mann. S/W. 4-3	8 1/4	1365	1366
Well No.	6187 Elev. 1159'	6 5/8	2102	2102
Surface	Walter F. Cordray, R.D.#2, Mannington, W. Va.			
Mineral	Same			
Commenced	7/24/51			
Completed	5/2/52			

Mannington Dist. Division Co. W.V.

Well cleaned out to 2247'.
 1 6-5/8 Baker Plug set at 2220'
 1 Bag Cal-Seal 2220-2215'
 Cement 2215 - 2200'
 Present Depth 2200'
 1 6-5/8" Steel shoe on bottom 6 5/8" Casing.
 Run 6 Bags Aquagel and 200 bags cement between 8 1/4" and 6 5/8" Casing.

OCT 15 1952

*W. F. Cordray Rec
O.F. No. 836*

J. M. CORDRAY No. 0181 *(4)* *PGH. & W. VA. GAS Co.* *MAR-223-R*