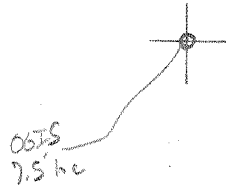


LATITUDE 39° 32' 30"

0108

LONGITUDE



7.5 OGIS topo location

7.5' loc 1.31 S 15' loc 4.19 S
1.56 W (calc.) 1.56 W

Company Owens-Illinois Glass Co.

Farm R. C. Brock, I

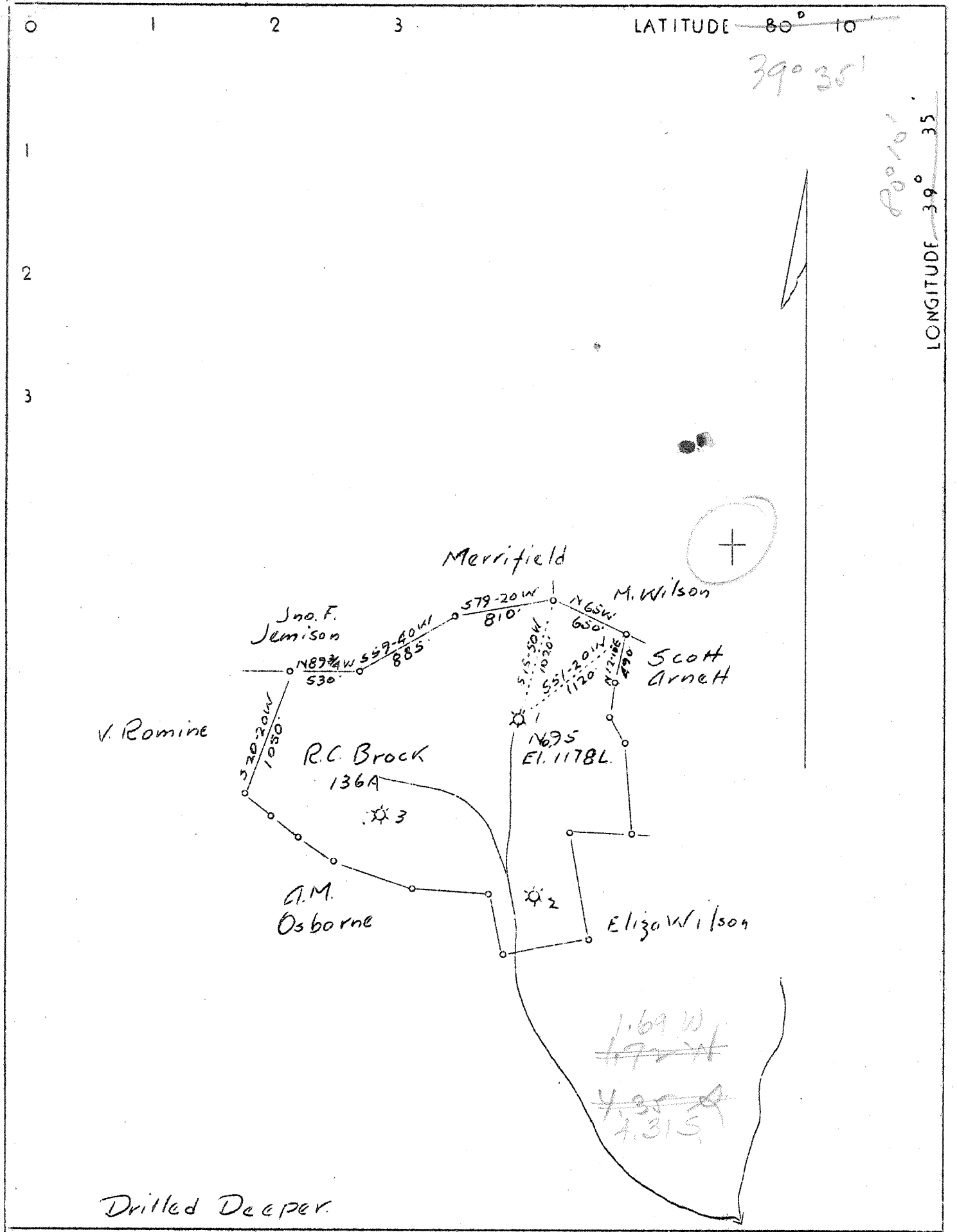
Quad Grant Town Blacksville SW

County Marion

District Fairmont

WELL LOCATION MAP

File No. 049-70



Company Owens-Illinois Glass Co. Gas Dept
 Address Box 1375, Charleston, W. Va.
 Farm R. C. Brock
 Tract "C" Acres 136 Lease No. 322
 Well (Farm) No. 1 Serial No. 95
 Quadrangle Blacksville SW
 County Marion
 District Fairmont
 Engineer T. S. Flournoy
 Engineer's Registration No. 269
 File No. _____ Drawing No. _____
 Date 3-24-37 Scale 1" = 1000'

STATE OF WEST VIRGINIA
 Department of Mines
 OIL AND GAS DIVISION
 Charleston

WELL LOCATION MAP
 File No. MAR-70

+ Denotes location of well on U. S. Topographic Maps, scale 1 to 62,500 latitude and longitude lines being represented by border lines as shown.

— Denotes one inch spaces on border line of original tracing.

67-6 64

