

LATITUDE 39°32'30"

80°12'30"

LONGITUDE

7.5 OGIS topo location

7.5' loc 1.27 S 15' loc 4.15 S
0.02 W (calc.) 2.24 W

Company Owens-Illinois Glass Co.

Farm Howard Gray

Elev. 1175 ^{7.5'} topo
W. 8' 3" 2

Quad Grant Town 7.5' Blacksville St.

County Marion

District Lincoln

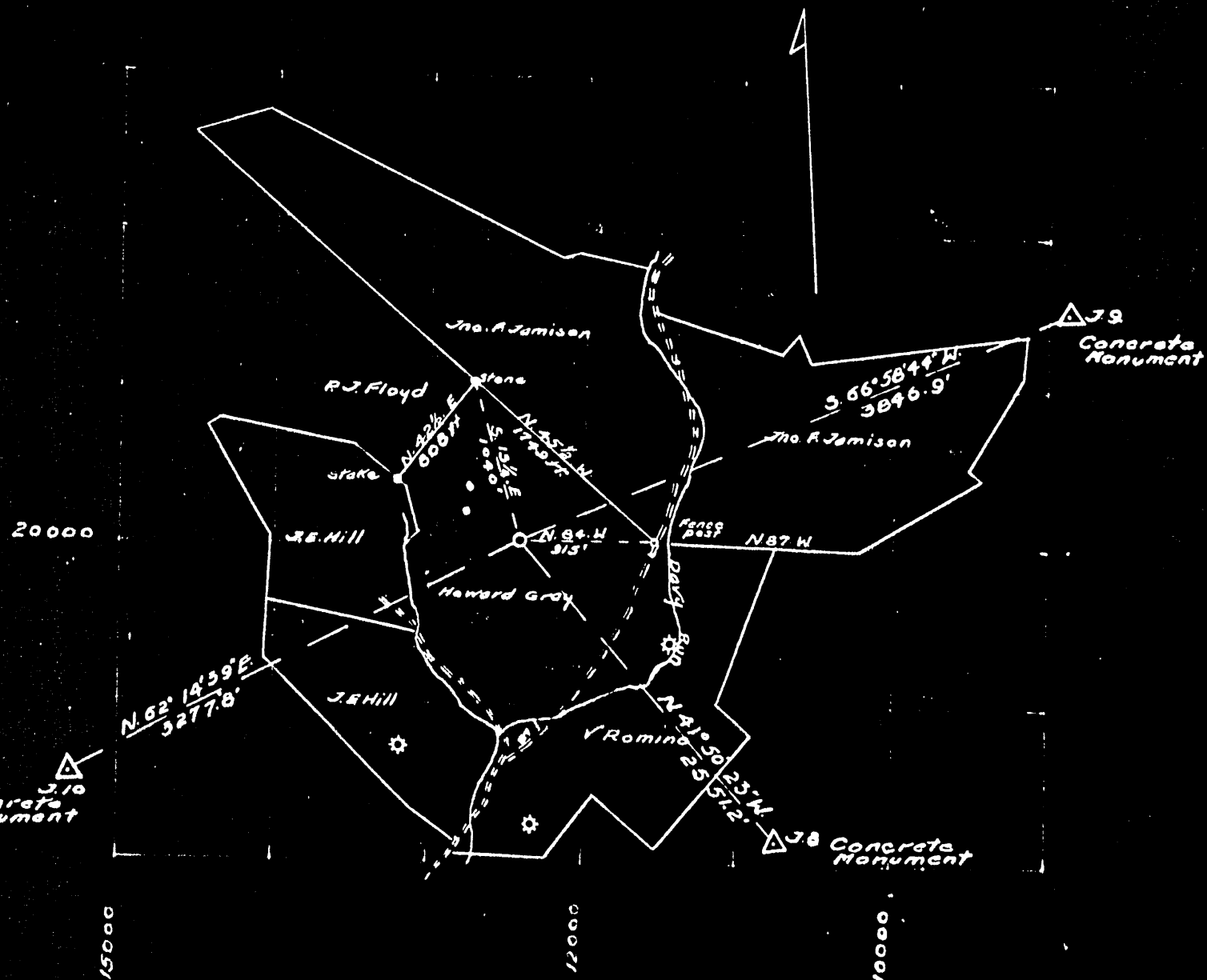
WELL LOCATION MAP

File No. 049 - 26

THE ILLINOIS GLASS COMPANY
 GAS DEPARTMENT
 CHARLESTON, W. VA.

PLAT OF PROPOSED LOCATION OF WELL No. 138

being Well No. 1 on Howard Gray Tract of 50 acres,
 Located in Lincoln District, Marion County.



Coordinates of Location
 N. 20,079 W. 12,381
 Elevation 1171.4' (ground)

MAR-26

Scale 1" = 1000'

ENGINEER'S CERTIFICATE

I, the undersigned, hereby certify that this map is correct and shows all the information to the best of my knowledge and belief, required by the oil and gas section of the Mining Laws of West Virginia.

R. P. Fisher
 Engineer.

Acknowledged before me a *Notary Public*
 this 15th day of July, 1930

L. L. Kohlman

My Commission Expires Mar. 18, 1939

	Top.	Bottom.	Thickness.
Slate, dark, soft	2220	- 2224	4
Sand, gray, hard	2224	- 2252	28
Slate, gray, soft	2252	- 2258	6
Lime, gray, medium and hard	2258	- 2304	46
Slate, dark, soft	2304	- 2306	2
Gantz Sand, gray and white, very hard (gas, 2310-2312; show only)	2306	- 2343	37
Slate, white, soft	2343	- 2355	12
50-Ft. Sand, gray, hard	2355	- 2373	18
Slate, gray, soft	2373	- 2378	5
50-Ft. Sand, gray, hard	2378	- 2443	65
Slate, dark, soft	2443	- 2445	2
30-Ft. Sand, gray, hard	2445	- 2473	28
Slate, dark, soft	2473	- 2480	7
Sand, gray, hard	2480	- 2490	10
Slate, white, soft	2490	- 2492	2
Sand, gray, hard	2492	- 2504	12
Slate, dark, soft	2504	- 2509	5
Gritty lime, gray, hard	2509	- 2532	23
Red rock, soft	2532	- 2542	10
Gritty lime, gray, hard	2542	- 2563	21
Slate, white, soft	2563	- 2565	2
Gritty lime, gray, hard	2565	- 2580	15
Slate, white, soft	2580	- 2590	10
Sand, gray, hard	2590	- 2600	10
Slate, white, soft	2600	- 2606	6
Lime, white and gray, hard	2606	- 2633	27
Slate, white, soft	2633	- 2639	6
Sand, gray, hard	2639	- 2663	24
Slate, white, soft	2663	- 2665	2
Lime, gray, hard	2665	- 2674	9
Gordon Sand, gray, hard	2674	- 2709	35
Slate, white, soft	2709	- 2711	2
Sand, gray, hard	2711	- 2719	8
Slate, white, soft	2719	- 2721	2
Sand, gray, hard	2721	- 2725	4
Slate and sand shells, white, medium	2725	- 2744	19
Sand, white and gray, hard	2744	- 2761	17
Slate and shells, white, hard and soft	2761	- 2771	10
Slate, white, soft	2771	- 2779	8
Gritty lime, white, hard	2779	- 2788	9
Slate and lime shells, white, medium	2788	- 2805	17
			plus 11
Slate and shells, gray, hard and soft	2816	- 2835	19
5th Sand, dark, hard	2835	- 2860	25
Slate, white, soft	2860	- 2868	8
Lime, gray, hard	2868	- 2886	18
Slate and shells, white, hard and soft	2886	- 2896	10
Total depth		2896	
Present depth		2880	
Open hble, 2896-2880			
Bridged, 2880			

Lincoln District, Marion County, W. Va.
By Owens-Illinois Glass Co., Gas Dept., Charleston, W. Va.
On 50 acres, surface owned by Howard Gray and Edna Gray, his
wife, Route 1, Fairmont, W. Va., and coal rights by
Jamison Coal & Coke Co., Greensburg, Pa.

Drilled under permit Mar-26, issued Aug. 1, 1930.

Elevation, 1171' L.

13" conductor, 16"; 10" casing, 514"; 6-5/8", 1797'.

Coal was encountered at 70-75, 355-360, and 477-484'.

Completion reported to Dept. of Mines June 15, 1931.

Well was shot at 2842-2858' and 2844-2860'.

Fresh water at 70'; salt water at 1400 and 1448'.

Gas well. Blue print of farm showing location attached to O.F. Rec.

	Top.	Bottom.	Thickness.
Clay, brown, soft	0	12	12
Sand, yellow and white, hard	12	55	43
Slate, dark, soft (1 baller water per hour at 70-75')	55	70	15
Coal (Sandstone), black, soft	70	75	5
Slate, white, soft	75	98	23
Lime, white, medium	98	116	18
Slate, dark, soft	116	128	12
Lime, gray, hard	128	156	28
Slate and lime shells, dark, hard and soft	156	186	30
Lime, white and gray, hard	186	221	35
Slate, red, soft	221	225	4
Slate and shells, blue, hard and soft	225	247	22
Slate, gray, soft	247	252	5
Lime, gray and white, hard	252	320	68
Slate, gray, soft	320	355	35
Mapletown (Sewickley) Coal, black, soft	355	360	5
Slate, dark, soft	360	370	10
Lime, white, hard	370	378	8
Slate, white, soft	378	391	13
Lime, white and gray, hard	391	414	23
Slate, gray, soft	414	425	11
Lime, white, medium	425	470	45
Slate, dark, soft	470	477	7
Pittsburgh Coal, black, soft	477	484	7
Slate, gray, soft	484	490	6
Sand, white, hard	490	514	24
Lime, gray, hard	514	544	30
Slate, gray and white, soft	544	574	30
Lime, white, hard	574	582	8
Slate, gray, soft	582	607	25
Gritty lime, white, medium	607	632	25
Slate, gray, soft	632	638	6
Lime, gray, hard	638	668	30
Slate, white, soft	668	690	22
Sand, white, hard	690	768	78
Slate and shells, dark, hard and soft	768	793	25
Slate, pink, gray, and white, soft	793	845	52
Gritty lime, gray, hard	845	865	20
Slate, white, soft	865	875	10
Gritty lime, white, hard	875	943	68

(OVER)

HOWARD GRAY NO. 135 WELL. (Continued).

	Top.	Bottom.	Thickness.
Slate and shells, white and dark, soft	943	- 978	35
Big Dunkard Sand, white, hard	978	- 1008	30
Slate and shells, gray, soft	1008	- 1040	32
Slate, gray, soft	1040	- 1052	12
Gritty lime, white, hard	1052	- 1062	10
Slate and shells, gray, soft	1062	- 1087	25
Sand, white, hard	1087	- 1139	52
Slate, dark, soft	1139	- 1140	1
Lime, white, hard	1140	- 1160	20
Slate, white, soft	1160	- 1175	15
Sand, gray, hard	1175	- 1185	10
Slate, black, soft	1185	- 1190	5
Lime, gritty, gray, hard	1190	- 1200	10
Sand, gray, hard	1200	- 1206	6
Slate, dark, soft	1206	- 1218	12
Lime, white, hard	1218	- 1238	20
Slate, dark, soft	1238	- 1258	20
Lime, gray, hard	1258	- 1278	20
1 st Salt Sand, white, hard	1278	- 1319	41
Slate, dark, soft	1319	- 1323	4
Sand, white and gray, hard	1323	- 1358	35
Slate, dark, soft	1358	- 1368	10
2 nd Salt Sand, gray and white, hard (1 ball- er water per hour at 1400-1408'; hole full water at 1448-1455')	1368	- 1503	135
Slate, black, soft	1503	- 1511	8
Slate and shells, dark, hard and soft	1511	- 1546	35
Sand, white, hard	1546	- 1561	15
Slate, gray, soft	1561	- 1566	5
Sand, gray, hard	1566	- 1573	7
Slate and shells, white, soft	1573	- 1593	20
Lime, gritty, gray, hard	1593	- 1618	25
Red rock, soft	1618	- 1633	15
Sand, white, hard	1633	- 1638	5
Red rock, soft	1638	- 1653	15
Lime, white, hard	1653	- 1668	15
Red rock, soft	1668	- 1687	19
Lime, gray, hard	1687	- 1702	15
Slate, gray, soft	1702	- 1727	25
Lime, white, hard	1727	- 1737	10
Gritty lime, blue, hard	1737	- 1746	9
Slate, blue, soft	1746	- 1747	1
Gritty lime, gray, hard	1747	- 1757	10
Slate, gray, soft	1757	- 1761	4
3 rd Lime, white, hard	1761	- 1818	57
Big Injun Sand, yellow and gray, hard	1818	- 1948	130
Slate, gray, soft	1948	- 1955	7
Sand, gray, hard	1955	- 1965	10
Slate, gray, soft	1965	- 1985	20
Lime, gray, medium	1985	- 1990	5
Sand, gray, hard	1990	- 2066	76
Slate, gray, soft	2066	- 2068	2
Sand, gray, hard	2068	- 2082	14
Slate and lime shells, gray, soft	2082	- 2127	45
Slate, gray, soft	2127	- 2133	6
Gritty lime, gray, hard	2133	- 2168	35
Lime, gray, medium and hard	2168	- 2220	52

(CONTINUED ON NEXT PAGE)