

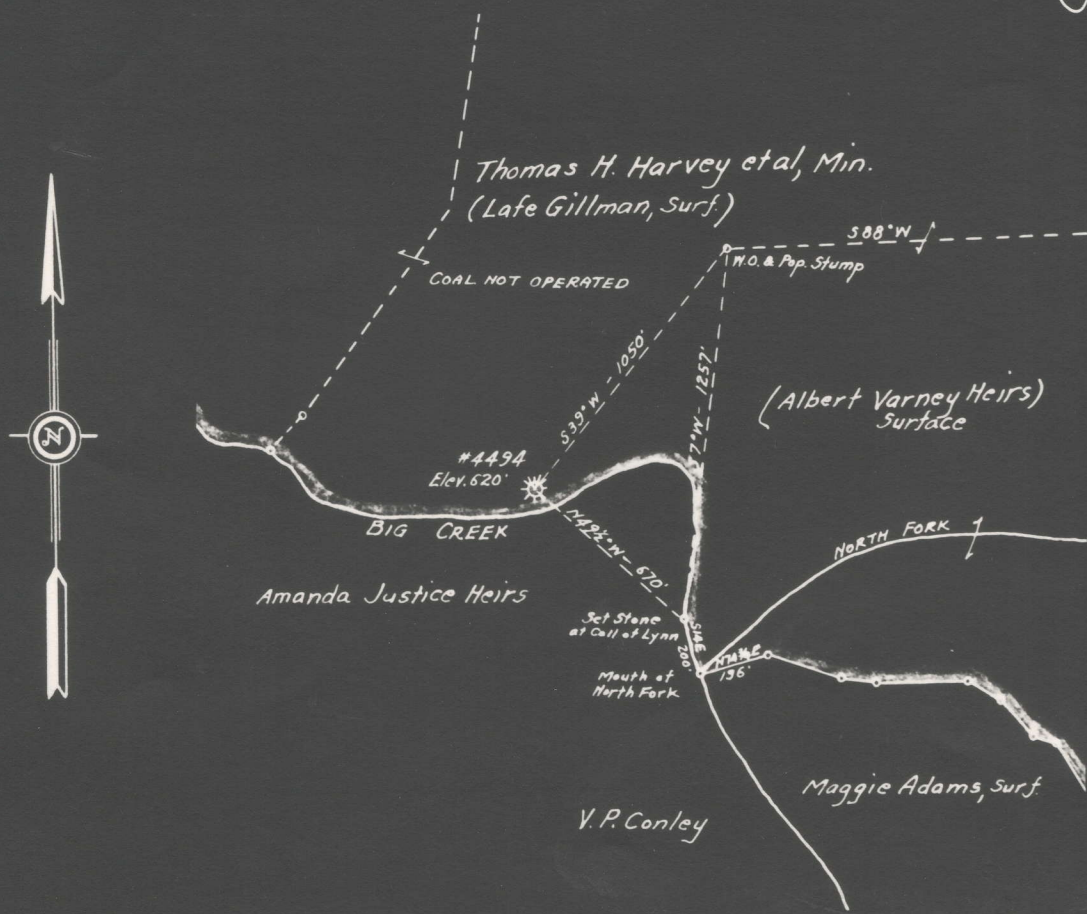
I, the undersigned, hereby certify that this map is correct and shows all the information to the best of my knowledge and belief, required by the Oil and Gas Section of the Mining Laws of West Virginia.

G. A. Cunningham
Engineer

Acknowledged before me, a Notary Public of Kanawha County, W. Va.

this 26 day of April 1934.

My Commission expires Feb. 28, 1935 *D. C. Jay*



Thomas H. Harvey et al
Well No. 4494
Chapmansville District
Logan County, W. Va.
Feb. 14, 1934

? 5.10 of 38° 05'
1.03 W 620'

SE
MIDKIFF

UNITED FUEL GAS CO.
MAP SHOWING
WELL TO BE ABANDONED
SCALE :- 1 INCH = 660 FEET

APR 27 1934
18-A
LOGAN 18-A

Chapmanville District, Logan County, W. Va.

United Fuel Gas Co., Charleston, W. Va. 18A

On 1143.48 acres, surface owned by Lafe Gillman, Big Creek, W. Va.,
and mineral rights by The Frederick Holding Co., Huntington, W. Va.

Drilled previous to June 1, 1929.

Elevation, 620' B.

10" casing, 33'; 6-5/8", 1080'.

No coal encountered.

Abandonment reported to Dept. of Mines April 26, 1934.

No record of depth shot. No record of water.

Gas well.

	Top.	Bottom.
Sand and gravel	0	33
Blue shale	33	70
Slate	70	90
White slate	90	115
Black shale	115	215
Sand	215	230
Slate and lime shells	230	285
Sand (oil and gas, 295-300')	285	438
Slate	438	441
Sand (oil, 441-450')	441	550
Slate	550	600
Sand	600	650
Slate	650	670
Sandy lime	670	835
Slate and shells	835	860
Red rock	860	870
Slate and shells	870	885
Red rock	885	920
Slate and shells	920	1005
Sand	1005	1048
Little Lime	1048	1060
Pencil Gave	1060	1068
Big Lime (gas, 1140-1145' and 1172-77')	1068	1242
Red rock, to bottom	1242	1245