

# ISLAND CREEK COAL COMPANY LEASE 60,000 ACRES ± WELL NO. WV 512820

LATITUDE 37°52'30"

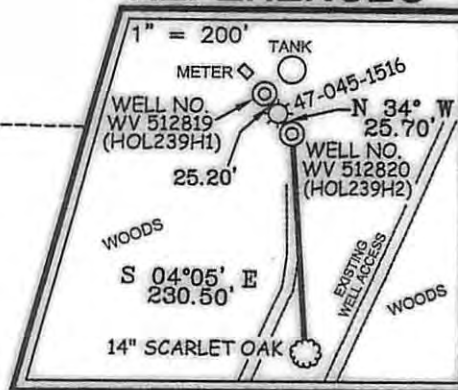
LONGITUDE 82°05'00"

**EXISTING WELL**  
A.P.I. #47-045-1516  
STATE PLANE COORDINATES  
SOUTH ZONE (NAD '27)

N. 305,586  
E. 1,686,568

LAT=(N) 37.83419  
LONG=(W) 82.08531

## REFERENCES



HEARTLAND FORESTLAND FUND  
24,418.08 AC.±  
(SURFACE)

HEARTLAND FORESTLAND FUND  
24,418.08 AC.±  
(SURFACE)

RONALD & DIANA BARNETTE  
115.81 AC.±  
(SURFACE)

INEZ DENISE QUEEN  
94.80 AC.±  
(SURFACE)

HEARTLAND FORESTLAND FUND  
24,418.08 AC.±  
(SURFACE)

BOTTOM HOLE WELL NO. WV 512820

**WELL NO. WV 512820**  
STATE PLANE COORDINATES  
SOUTH ZONE (NAD '27)

N. 305,567  
E. 1,686,585

LAT=(N) 37.83414  
LONG=(W) 82.08525

UTM (NAD'83)  
N: 4,187,979  
E: 404,516

### NOTES ON SURVEY

1. TIES TO WELLS AND CORNERS ARE BASED ON GRID NORTH FOR THE WV STATE PLANE COORDINATE SYSTEM SOUTH ZONE NAD '27.
2. TIES TO REFERENCES ARE BASED ON MAGNETIC NORTH 03/04/10.
3. LEASE BOUNDARY DOES NOT APPEAR WITHIN THE SCOPE OF THIS PLAT.
4. SURFACE OWNER AND ADJOINER INFORMATION TAKEN FROM THE ASSESSOR AND COUNTY CLERK RECORDS OF LOGAN COUNTY IN JULY, 2010.
5. WELL LAT./LONG. (NAD'27) ESTABLISHED BY DGPS(SUBMETER MAPPING GRADE).

**BOTTOM HOLE**  
WELL NO. WV 512820  
STATE PLANE COORDINATES  
SOUTH ZONE (NAD '27)

N. 303,179  
E. 1,689,411

LAT=(N) 37.82768  
LONG=(W) 82.07537

UTM (NAD'83)  
N: 4,187,251  
E: 405,377

I THE UNDERSIGNED, HEREBY CERTIFY THAT THIS PLAT IS CORRECT TO THE BEST OF MY KNOWLEDGE AND BELIEF AND SHOWS ALL THE INFORMATION REQUIRED BY LAW AND THE REGULATIONS ISSUED AND PRESCRIBED BY THE DIVISION OF ENVIRONMENTAL PROTECTION.

P.S. 677 *Gregory A. Smith*



(+) DENOTES LOCATION OF WELL ON UNITED STATES TOPOGRAPHIC MAPS.

DATE OCTOBER 14, 20 10

OPERATORS WELL NO. WV 512820

API WELL NO. 47-045-02407H  
STATE COUNTY PERMIT

# CANCELLED

MINIMUM DEGREE OF ACCURACY 1/2500 FILE NO. 3890P512820 (289-75)  
PROVEN SOURCE OF ELEVATION DGPS (SUBMETER MAPPING GRADE) SCALE 1" = 1,000'

STATE OF WEST VIRGINIA  
DIVISION OF ENVIRONMENTAL PROTECTION  
OFFICE OF OIL AND GAS



WELL TYPE: OIL  GAS  LIQUID INJECTION  WASTE DISPOSAL  IF "GAS" PRODUCTION  STORAGE  DEEP  SHALLOW

LOCATION: ELEVATION 1,375' WATERSHED COPPERAS MINE FORK OF ISLAND CREEK  
DISTRICT ISLAND CREEK COUNTY LOGAN QUADRANGLE HOLDEN 7.5'

SURFACE OWNER HEARTWOOD FORESTLAND FUND ACREAGE 24,418.08±  
ROYALTY OWNER ISLAND CREEK CORPORATION LEASE ACREAGE 60,000±  
PROPOSED WORK: LEASE NO. 080662

DRILL  CONVERT  DRILL DEEPER  REDRILL  FRACTURE OR STIMULATE  PLUG OFF OLD   
FORMATION  PERFORATE NEW FORMATION  PLUG AND ABANDON  CLEAN OUT AND REPLUG  OTHER   
PHYSICAL CHANGE IN WELL (SPECIFY) \_\_\_\_\_ TARGET FORMATION LOWER HURON  
ESTIMATED DEPTH 4,460' (TOTAL VERTICAL DEPTH)

WELL OPERATOR EQT PRODUCTION COMPANY DESIGNATED AGENT REX C. RAY  
ADDRESS 1710 PENNSYLVANIA AVENUE ADDRESS 1710 PENNSYLVANIA AVENUE  
CHARLESTON, WV 25302 CHARLESTON, WV 25302