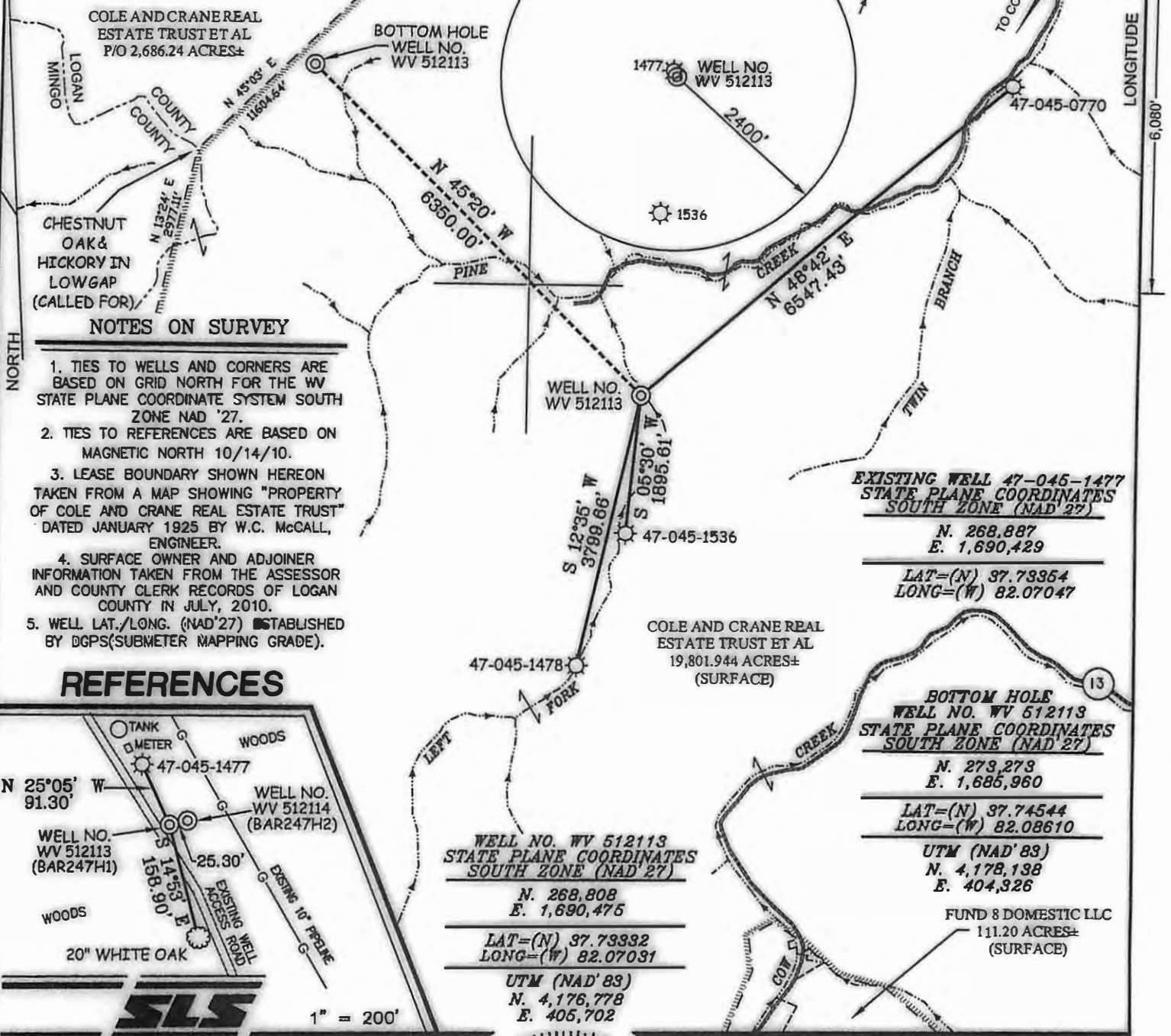


COLE AND CRANE REAL ESTATE TRUST LEASE

13,292.15 ACRES± WELL NO. WV 512113



NOTES ON SURVEY

1. TIES TO WELLS AND CORNERS ARE BASED ON GRID NORTH FOR THE WV STATE PLANE COORDINATE SYSTEM SOUTH ZONE NAD '27.
2. TIES TO REFERENCES ARE BASED ON MAGNETIC NORTH 10/14/10.
3. LEASE BOUNDARY SHOWN HEREON TAKEN FROM A MAP SHOWING "PROPERTY OF COLE AND CRANE REAL ESTATE TRUST" DATED JANUARY 1925 BY W.C. McCALL, ENGINEER.
4. SURFACE OWNER AND ADJOINER INFORMATION TAKEN FROM THE ASSESSOR AND COUNTY CLERK RECORDS OF LOGAN COUNTY IN JULY, 2010.
5. WELL LAT./LONG. (NAD'27) ESTABLISHED BY DGPS(SUBMETER MAPPING GRADE).

REFERENCES



EXISTING WELL 47-045-1477
STATE PLANE COORDINATES
SOUTH ZONE (NAD'27)

N. 268,887
E. 1,690,429

LAT=(N) 37.73354
LONG=(W) 82.07047

BOTTOM HOLE WELL NO. WV 512113
STATE PLANE COORDINATES
SOUTH ZONE (NAD'27)

N. 273,273
E. 1,685,960

LAT=(N) 37.74544
LONG=(W) 82.08610

UTM (NAD'83)
N. 4,178,138
E. 404,326

FUND 8 DOMESTIC LLC
111.20 ACRES±
(SURFACE)

WELL NO. WV 512113
STATE PLANE COORDINATES
SOUTH ZONE (NAD'27)

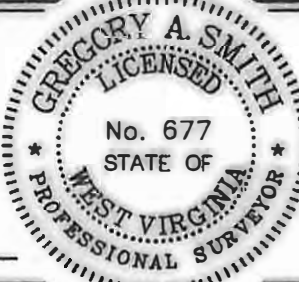
N. 268,808
E. 1,690,475

LAT=(N) 37.73332
LONG=(W) 82.07031

UTM (NAD'83)
N. 4,176,778
E. 405,702

I THE UNDERSIGNED, HEREBY CERTIFY THAT THIS PLAT IS CORRECT TO THE BEST OF MY KNOWLEDGE AND BELIEF AND SHOWS ALL THE INFORMATION REQUIRED BY LAW AND THE REGULATIONS ISSUED AND PRESCRIBED BY THE DIVISION OF ENVIRONMENTAL PROTECTION.

P.S. 677 *Gregory A. Smith*



(+) DENOTES LOCATION OF WELL ON UNITED STATES TOPOGRAPHIC MAPS.
DATE OCTOBER 20, 20 10
OPERATORS WELL NO. WV 512113
API WELL NO. 47-045-024034
STATE CO. PERMIT

CANCELLED

MINIMUM DEGREE OF ACCURACY 1/2500 FILE NO. 3796P512113 (299-29 & 311-76)
PROVEN SOURCE OF ELEVATION DGPS (SUBMETER MAPPING GRADE) SCALE 1" = 2000'

STATE OF WEST VIRGINIA
DIVISION OF ENVIRONMENTAL PROTECTION
OFFICE OF OIL AND GAS

WELL TYPE: OIL GAS LIQUID INJECTION WASTE DISPOSAL IF "GAS" PRODUCTION STORAGE DEEP SHALLOW

LOCATION: ELEVATION 1,226' WATERSHED LEFT FORK OF PINE CREEK
DISTRICT ISLAND CREEK COUNTY LOGAN QUADRANGLE BARNABUS 7.5'

SURFACE OWNER COLE & CRANE REAL ESTATE TRUST ET AL ACREAGE 19,801.944±
ROYAL Y OWNER COLE & CRANE REAL ESTATE TRUST ET AL LEASE ACREAGE 13,292.15±
PROPOSED WORK: LEASE NO. 080574

DRILL CONVERT DRILL DEEPER REDRILL FRACTURE OR STIMULATE PLUG OFF OLD FORMATION PERFORATE NEW FORMATION PLUG AND ABANDON CLEAN OUT AND REPLUG OTHER

PHYSICAL CHANGE IN WELL (SPECIFY) _____ TARGET FORMATION LOWER HURON
ESTIMATED DEPTH 4,730' (TOTAL VERTICAL DEPTH)

WELL OPERATOR EQT PRODUCTION COMPANY DESIGNATED AGENT REX C. RAY
ADDRESS 1710 PENNSYLVANIA AVE CHARLESTON, WV 25302 ADDRESS 1710 PENNSYLVANIA AVE CHARLESTON, WV 25302