

BOTTOM HOLE
WELL NO. WV 512163
STATE PLANE COORDINATES
SOUTH ZONE (NAD'27)

N. 255,587
 E. 1,700,445

LAT=(N) 37.69732
 LONG=(W) 82.03533

UTM (NAD'83)
 N. 4,172,749
 E. 408,741

WELL NO. WV 512153
STATE PLANE COORDINATES
SOUTH ZONE (NAD'27)

N. 251,384
 E. 1,705,138

LAT=(N) 37.68593
 LONG=(W) 82.01895

UTM (NAD'83)
 N. 4,171,469
 E. 410,172

EXISTING WELL
API #47-045-0540
STATE PLANE COORDINATES
SOUTH ZONE (NAD'27)

N. 251,393
 E. 1,705,169

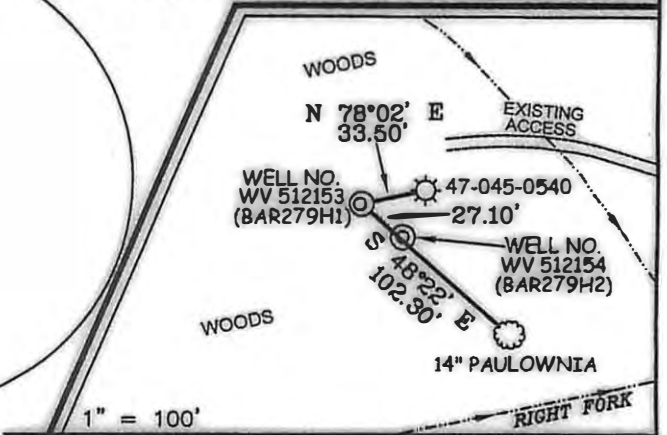
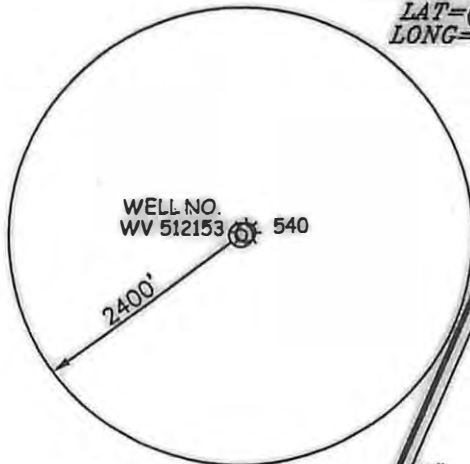
LAT=(N) 37.68595
 LONG=(W) 82.01884

REFERENCES

EQT PRODUCTION COMPANY
(COLE & CRANE / ISLAND CREEK)
WELL NO. WV 512153

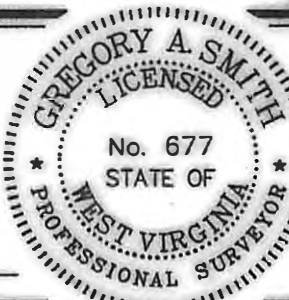
NOTES ON SURVEY

1. TIES TO WELLS AND CORNERS ARE BASED ON GRID NORTH FOR THE WV STATE PLANE COORDINATE SYSTEM SOUTH ZONE NAD '27.
2. TIES TO REFERENCES ARE BASED ON MAGNETIC NORTH 03/18/10.
3. LEASE BOUNDARY SHOWN HEREON TAKEN FROM A MAP SHOWING "PROPERTY OF COLE AND CRANE REAL ESTATE TRUST" DATED JANUARY 1925 BY W.C. McCALL, ENGINEER.
4. SURFACE OWNER AND ADJOINER INFORMATION TAKEN FROM THE ASSESSOR AND COUNTY CLERK RECORDS OF LOGAN COUNTY IN JULY, 2010.
5. WELL LAT./LONG. (NAD'27) ESTABLISHED BY DGPS(SUBMETER MAPPING GRADE).



I THE UNDERSIGNED, HEREBY CERTIFY THAT THIS PLAT IS CORRECT TO THE BEST OF MY KNOWLEDGE AND BELIEF AND SHOWS ALL THE INFORMATION REQUIRED BY LAW AND THE REGULATIONS ISSUED AND PRESCRIBED BY THE DIVISION OF ENVIRONMENTAL PROTECTION.

P.S. 677 *Gregory A. Smith*



(+) DENOTES LOCATION OF WELL ON UNITED STATES TOPOGRAPHIC MAPS.
 DATE OCTOBER 07, 20 10
 OPERATORS WELL NO. WV 512153
 API WELL NO. 47-045-02390H
 STATE COUNTY PERMIT

MINIMUM DEGREE OF ACCURACY 1/2500 FILE NO. 3796P512153 (299-09)
 PROVEN SOURCE OF ELEVATION DGPS (SUBMETER MAPPING GRADE) SCALE 1" = 2000'

CANCELLED
 STATE OF WEST VIRGINIA
 DIVISION OF ENVIRONMENTAL PROTECTION
 OFFICE OF OIL AND GAS

WELL TYPE: OIL GAS LIQUID INJECTION WASTE DISPOSAL IF "GAS" PRODUCTION STORAGE DEEP SHALLOW

LOCATION: ELEVATION 1,461' WATERSHED RIGHT FORK OF ISLAND CREEK
 DISTRICT ISLAND CREEK COUNTY LOGAN QUADRANGLE BARNABUS 7.5'

SURFACE OWNER COLE & CRANE REAL ESTATE TRUST ET AL ACREAGE 239.72±
 ROYALTY OWNER COLE & CRANE REAL ESTATE TRUST ET AL (13,292.15 AC.±) / ISLAND CREEK CORPORATION (60,000 AC.±)

PROPOSED WORK: LEASE NO. 080574 / 080662
 DRILL CONVERT DRILL DEEPER REDRILL FRACTURE OR STIMULATE PLUG OFF OLD FORMATION
 PERFORATE NEW FORMATION PLUG AND ABANDON CLEAN OUT AND REPLUG OTHER

PHYSICAL CHANGE IN WELL (SPECIFY) _____ TARGET FORMATION LOWER HURON
 ESTIMATED DEPTH 5,020' (TOTAL VERTICAL DEPTH)

WELL OPERATOR EQT PRODUCTION COMPANY DESIGNATED AGENT REX C. RAY
 ADDRESS 1710 PENNSYLVANIA AVENUE ADDRESS 1710 PENNSYLVANIA AVENUE
CHARLESTON, WV 25302 CHARLESTON, WV 25302