

COLE AND CRANE REAL ESTATE TRUST LEASE

13,292.15 ACRES ± WELL NO. WV 512109

**BOTTOM HOLE
WELL NO. WV 512109
STATE PLANE COORDINATES
(SOUTH ZONE)**

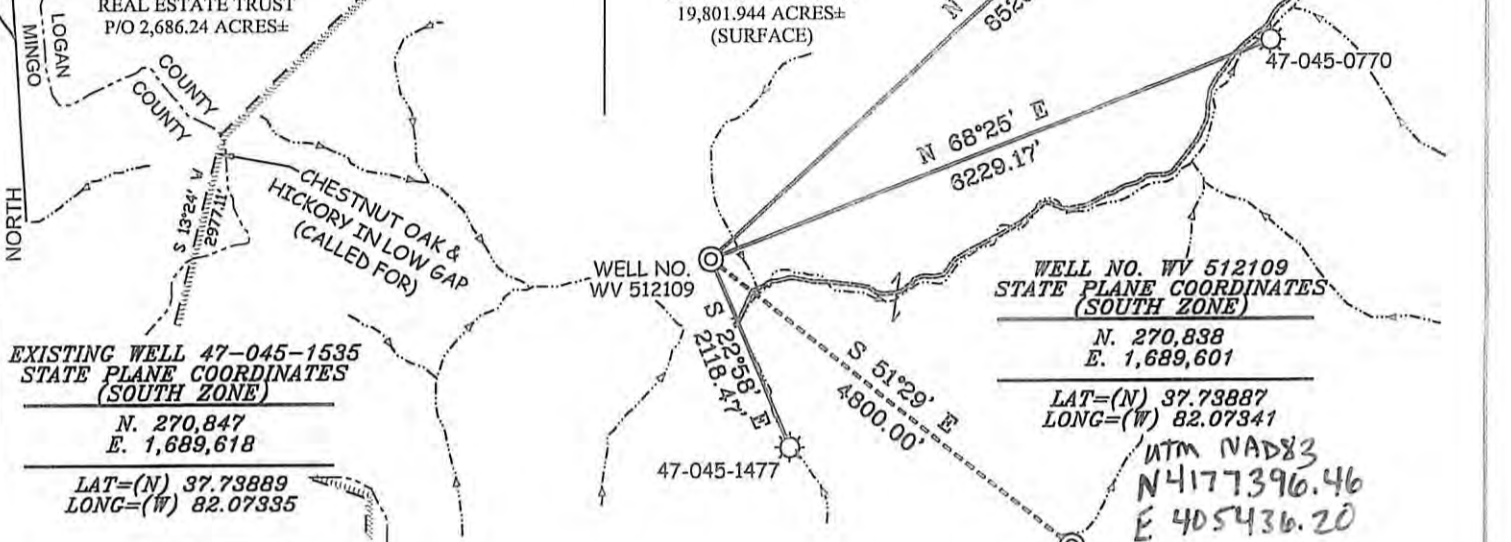
N. 267,849
E. 1,693,357

LAT=(N) 37.73078
LONG=(W) 82.06031

COLE AND CRANE
REAL ESTATE TRUST
P/O 2,686.24 ACRES±

COLE AND CRANE
REAL ESTATE TRUST
19,801.944 ACRES±
(SURFACE)

Cancelled



**EXISTING WELL 47-045-1535
STATE PLANE COORDINATES
(SOUTH ZONE)**

N. 270,847
E. 1,689,618

LAT=(N) 37.73889
LONG=(W) 82.07335

**WELL NO. WV 512109
STATE PLANE COORDINATES
(SOUTH ZONE)**

N. 270,838
E. 1,689,601

LAT=(N) 37.73887
LONG=(W) 82.07341

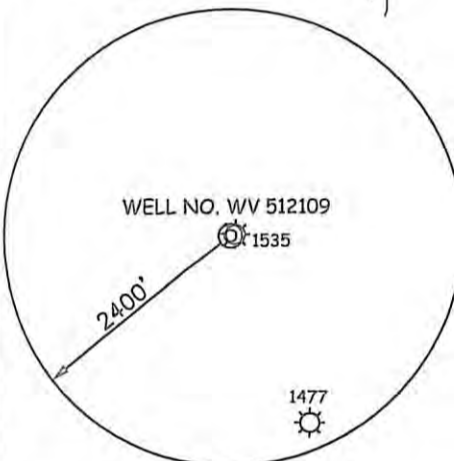
UTM NAD83
N 4177396.46
E 405436.20

BOTTOM HOLE
WELL NO.
WV 512109

NOTES ON SURVEY

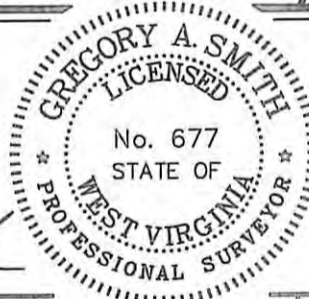
1. TIES TO WELLS AND CORNERS ARE BASED ON GRID NORTH FOR THE WV STATE PLANE COORDINATE SYSTEM SOUTH ZONE NAD '27.
2. TIES TO REFERENCES ARE BASED ON MAGNETIC NORTH 12/03/09.
3. LEASE BOUNDARY SHOWN HEREON TAKEN FROM A MAP SHOWING "PROPERTY OF COLE AND CRANE REAL ESTATE TRUST" DATED JANUARY 1925 BY W.C. McCALL, ENGINEER.
4. SURFACE OWNER AND ADJOINER INFORMATION TAKEN FROM THE ASSESSOR AND COUNTY CLERK RECORDS OF LOGAN COUNTY IN JUNE, 2009.
5. WELL LAT./LONG. (NAD'27) ESTABLISHED BY DGPS(SUBMETER MAPPING GRADE).

REFERENCES



I THE UNDERSIGNED, HEREBY CERTIFY THAT THIS PLAT IS CORRECT TO THE BEST OF MY KNOWLEDGE AND BELIEF AND SHOWS ALL THE INFORMATION REQUIRED BY LAW AND THE REGULATIONS ISSUED AND PRESCRIBED BY THE DIVISION OF ENVIRONMENTAL PROTECTION.

P.S. 677 *Gregory A. Smith*



(+) DENOTES LOCATION OF WELL ON UNITED STATES TOPOGRAPHIC MAPS.

DATE APRIL 02, 20 10
 OPERATORS WELL NO. WV 512109
 API WELL NO. 47-045-02361H
 STATE COUNTY PERMIT

MINIMUM DEGREE OF ACCURACY 1/2500 FILE NO. 3796P512109 (289-46)
 PROVEN SOURCE OF ELEVATION DGPS (SUBMETER MAPPING GRADE) SCALE 1" = 2000'

STATE OF WEST VIRGINIA
 DIVISION OF ENVIRONMENTAL PROTECTION
 OFFICE OF OIL AND GAS



WELL TYPE: OIL GAS LIQUID INJECTION WASTE DISPOSAL IF "GAS" PRODUCTION STORAGE DEEP SHALLOW

LOCATION: ELEVATION 1,226' WATERSHED LEFT FORK OF PINE CREEK
 DISTRICT ISLAND CREEK COUNTY LOGAN QUADRANGLE BARNABUS 7.5'
 SURFACE OWNER COLE & CRANE REAL ESTATE TRUST ACREAGE 19,801.944±
 ROYALTY OWNER COLE & CRANE REAL ESTATE TRUST LEASE ACREAGE 13,292.15±
 PROPOSED WORK: LEASE NO. 080574
 DRILL CONVERT DRILL DEEPER REDRILL FRACTURE OR STIMULATE PLUG OFF OLD FORMATION
 PERFORATE NEW FORMATION PLUG AND ABANDON CLEAN OUT AND REPLUG OTHER
 PHYSICAL CHANGE IN WELL (SPECIFY) _____ TARGET FORMATION LOWER HURON
 ESTIMATED DEPTH 4,730' (TOTAL VERTICAL DEPTH)

WELL OPERATOR EQT PRODUCTION COMPANY DESIGNATED AGENT REX C. RAY
 ADDRESS 1710 PENNSYLVANIA AVE ADDRESS 1710 PENNSYLVANIA AVE
CHARLESTON, WV 25302 CHARLESTON, WV 25302