

BOTTOM HOLE WELL NO. WV 506294

BOTTOM HOLE WELL NO. WV 506294 STATE PLANE COORDINATES (SOUTH ZONE)

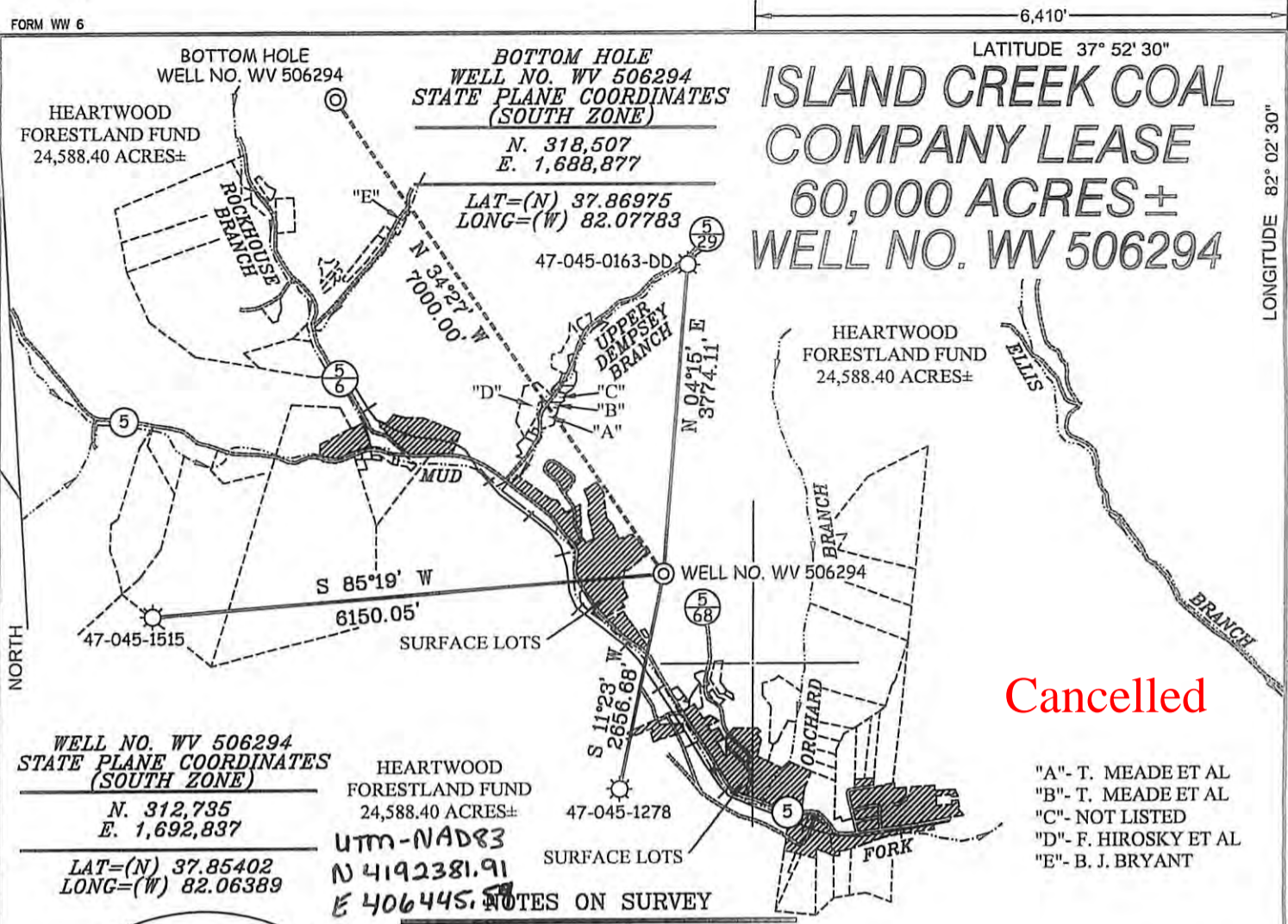
ISLAND CREEK COAL COMPANY LEASE 60,000 ACRES ± WELL NO. WV 506294

HEARTWOOD FORESTLAND FUND 24,588.40 ACRES±

N. 318,507 E. 1,688,877

LAT=(N) 37.86975 LONG=(W) 82.07783

47-045-0163-DD



WELL NO. WV 506294 STATE PLANE COORDINATES (SOUTH ZONE)

N. 312,735 E. 1,692,837

LAT=(N) 37.85402 LONG=(W) 82.06389

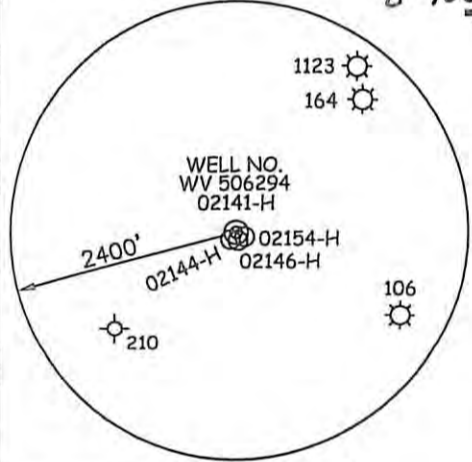
HEARTWOOD FORESTLAND FUND 24,588.40 ACRES±

UTM-NAD83 N 4192381.91 E 406445.88

NOTES ON SURVEY

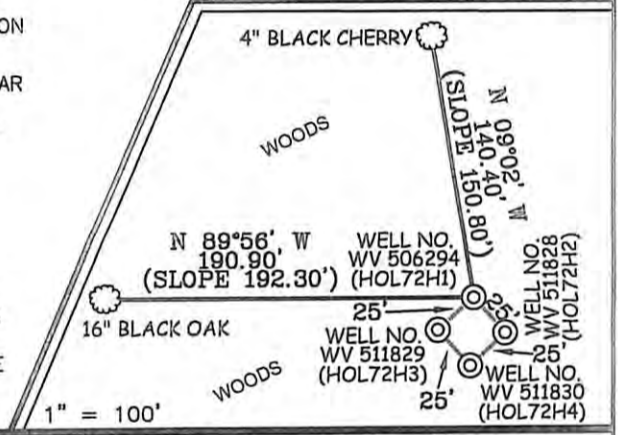
Cancelled

- "A"- T. MEADE ET AL "B"- T. MEADE ET AL "C"- NOT LISTED "D"- F. HIROSKY ET AL "E"- B. J. BRYANT

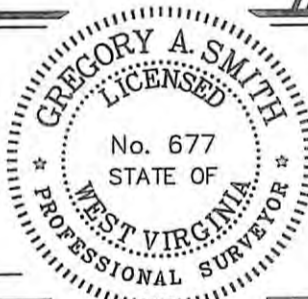


- 1. TIES TO WELLS AND CORNERS ARE BASED ON GRID NORTH FOR THE WV STATE PLANE COORDINATE SYSTEM SOUTH ZONE NAD '27. 2. TIES TO REFERENCES ARE BASED ON MAGNETIC NORTH 05/20/08. 3. LEASE BOUNDARY DOES NOT APPEAR WITHIN THE SCOPE OF THIS PLAT. 4. SURFACE OWNER AND ADJOINER INFORMATION TAKEN FROM THE ASSESSOR AND COUNTY CLERK RECORDS OF LOGAN COUNTY IN JANUARY, 2008. 5. WELL LAT./LONG. (NAD'27) ESTABLISHED BY DGPS(SUBMETER MAPPING GRADE). 6. ORIGINAL PLAT DATED 07/08/08 REVISED 03/08/10 TO ROTATE & EXTEND HORIZONTAL LEG & CHANGE BOTTOM HOLE COORDINATES, ETC.

REFERENCES



I THE UNDERSIGNED, HEREBY CERTIFY THAT THIS PLAT IS CORRECT TO THE BEST OF MY KNOWLEDGE AND BELIEF AND SHOWS ALL THE INFORMATION REQUIRED BY LAW AND THE REGULATIONS ISSUED AND PRESCRIBED BY THE DIVISION OF ENVIRONMENTAL PROTECTION.



(+) DENOTES LOCATION OF WELL ON UNITED STATES TOPOGRAPHIC MAPS. DATE MARCH 08, 20 10 OPERATORS WELL NO. WV 506294 API WELL NO. 47 - 045 - 02357H STATE COUNTY PERMIT

MINIMUM DEGREE OF ACCURACY 1 / 2500 FILE NO. 3890P506294R (258-43 & 55) SCALE 1" = 2000' PROVEN SOURCE OF ELEVATION DGPS (SUBMETER MAPPING GRADE)

STATE OF WEST VIRGINIA DIVISION OF ENVIRONMENTAL PROTECTION OFFICE OF OIL AND GAS

WELL TYPE: OIL GAS X LIQUID INJECTION WASTE DISPOSAL IF "GAS" PRODUCTION X STORAGE DEEP SHALLOW X LOCATION: ELEVATION 1,143' WATERSHED MUD FORK OF COPPERAS MINE FORK OF ISLAND CREEK DISTRICT ISLAND CREEK COUNTY LOGAN QUADRANGLE HOLDEN 7.5' SURFACE OWNER HEARTWOOD FORESTLAND FUND ACREAGE 24,588.40± ROYALTY OWNER ISLAND CREEK CORPORATION LEASE ACREAGE 60,000± LEASE NO. 080662 PROPOSED WORK: DRILL X CONVERT DRILL DEEPER REDRILL FRACTURE OR STIMULATE X PLUG OFF OLD FORMATION PERFORATE NEW FORMATION PLUG AND ABANDON CLEAN OUT AND REPLUG OTHER PHYSICAL CHANGE IN WELL (SPECIFY) TARGET FORMATION LOWER HURON ESTIMATED DEPTH 4,250' (TOTAL VERTICAL DEPTH)

WELL OPERATOR EQT PRODUCTION COMPANY DESIGNATED AGENT REX C. RAY ADDRESS 1710 PENNSYLVANIA AVENUE CHARLESTON, WV 25302

01/04/2013