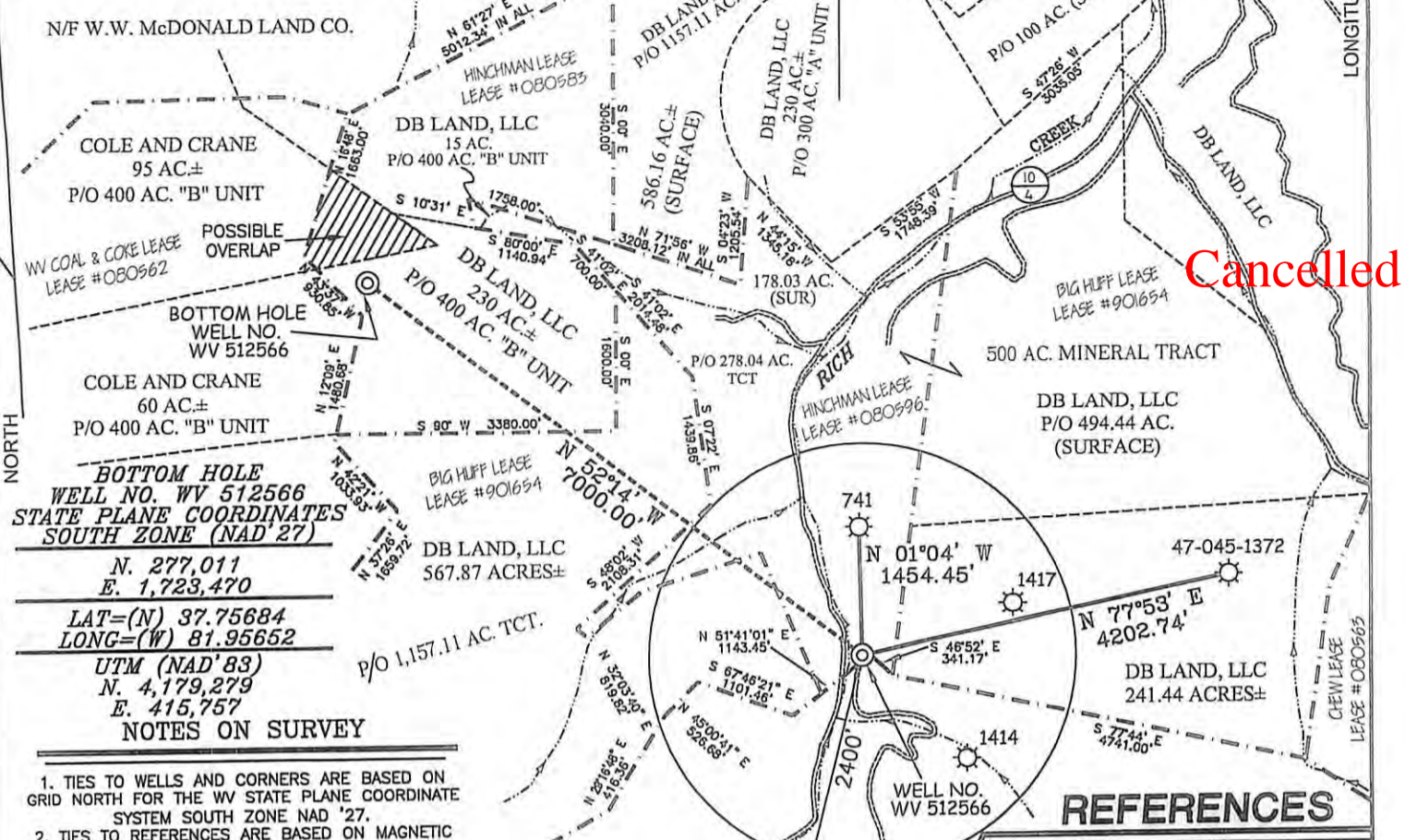


# EQT PRODUCTION COMPANY BIG HUFF / COLE & CRANE WELL NO. WV 512566



**BOTTOM HOLE WELL NO. WV 512566**  
**STATE PLANE COORDINATES**  
**SOUTH ZONE (NAD'27)**

N. 277,011  
 E. 1,723,470  
 LAT=(N) 37.75684  
 LONG=(W) 81.95652  
 UTM (NAD'83)  
 N. 4,179,279  
 E. 415,757

- NOTES ON SURVEY**
1. TIES TO WELLS AND CORNERS ARE BASED ON GRID NORTH FOR THE WV STATE PLANE COORDINATE SYSTEM SOUTH ZONE NAD '27.
  2. TIES TO REFERENCES ARE BASED ON MAGNETIC NORTH 09/03/09.
  3. LEASE BOUNDARY SHOWN HEREON TAKEN FROM A DESCRIPTION RECORDED IN LEASE BOOK 15 PAGE 305 AND A PLAT RECORDED IN MAP BOOK 6 PAGE 144 & OTHER DEEDS/INFORMATION.
  4. SURFACE OWNER AND ADJOINER INFORMATION TAKEN FROM THE ASSESSOR AND COUNTY CLERK RECORDS OF LOGAN COUNTY IN JULY, 2010.
  5. WELL LAT./LONG. (NAD'27) ESTABLISHED BY DGPS(SUBMETER MAPPING GRADE).
  6. ORIGINAL PLAT DATED 10/21/09 REVISED 01/04/10 TO EXTEND HORIZONTAL LEG & CHANGE BOTTOM HOLE COORDINATES, ETC.  
 PLAT REVISED 10/04/10 TO CHANGE TOP & BOTTOM HOLE COORDINATES & ADD UTM COORDINATES, ETC.



I THE UNDERSIGNED, HEREBY CERTIFY THAT THIS PLAT IS CORRECT TO THE BEST OF MY KNOWLEDGE AND BELIEF AND SHOWS ALL THE INFORMATION REQUIRED BY LAW AND THE REGULATIONS ISSUED AND PRESCRIBED BY THE DIVISION OF ENVIRONMENTAL PROTECTION.

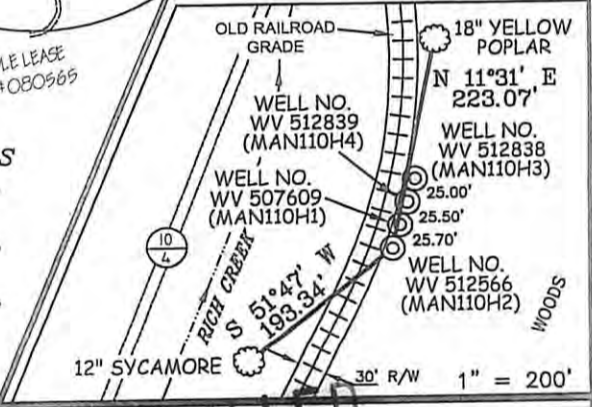
P.S. *Gregory A. Smith*  
 677



**WELL NO. WV 512566**  
**STATE PLANE COORDINATES**  
**SOUTH ZONE (NAD'27)**

N. 272,724  
 E. 1,729,004  
 LAT=(N) 37.74522  
 LONG=(W) 81.93723  
 UTM (NAD'83)  
 N. 4,177,972  
 E. 417,443

### REFERENCES



(+) DENOTES LOCATION OF WELL ON UNITED STATES TOPOGRAPHIC MAPS.  
 DATE OCTOBER 07, 20 10  
 OPERATORS WELL NO. WV 512566  
 API WELL NO. 47-045-02354  
 STATE COUNTY PERMIT

MINIMUM DEGREE OF ACCURACY 1 / 2500 FILE NO. 4140P512566R2 (283-65)  
 PROVEN SOURCE OF ELEVATION DGPS (SUBMETER MAPPING GRADE) SCALE 1" = 2000'

STATE OF WEST VIRGINIA  
 DIVISION OF ENVIRONMENTAL PROTECTION  
 OFFICE OF OIL AND GAS

WELL TYPE: OIL  GAS  LIQUID INJECTION  WASTE DISPOSAL  IF "GAS" PRODUCTION  STORAGE  DEEP  SHALLOW

LOCATION: ELEVATION 888' WATERSHED RICH CREEK  
 DISTRICT TRIADELPHIA COUNTY LOGAN QUADRANGLE MAN 7.5'  
 SURFACE OWNER DB LAND, LLC ACREAGE 494.44±  
 ROYALTY OWNER PARDEE MINERALS (943.04 AC.±) / COLE & CRANE REAL ESTATE TRUST (12,096.65 AC.±) / PARDEE MINERALS (1,257.081 AC.±) / PARDEE MINERALS (1,617.111 AC.±)  
 PROPOSED WORK: LEASE NO. 080596 / 080565 / 901654 / 080583  
 DRILL  CONVERT  DRILL DEEPER  REDRILL  FRACTURE OR STIMULATE  PLUG OFF OLD   
 FORMATION  PERFORATE NEW FORMATION  PLUG AND ABANDON  CLEAN OUT AND REPLUG  OTHER   
 PHYSICAL CHANGE IN WELL (SPECIFY) \_\_\_\_\_ TARGET FORMATION LOWER HURON / SILTSTONE  
 ESTIMATED DEPTH 4,040' (TOTAL VERTICAL DEPTH)

WELL OPERATOR EQT PRODUCTION COMPANY DESIGNATED AGENT REX C. RAY  
 ADDRESS 1710 PENNSYLVANIA AVENUE ADDRESS 1710 PENNSYLVANIA AVENUE  
CHARLESTON, WV 25302 CHARLESTON, WV 25302

01/04/2013