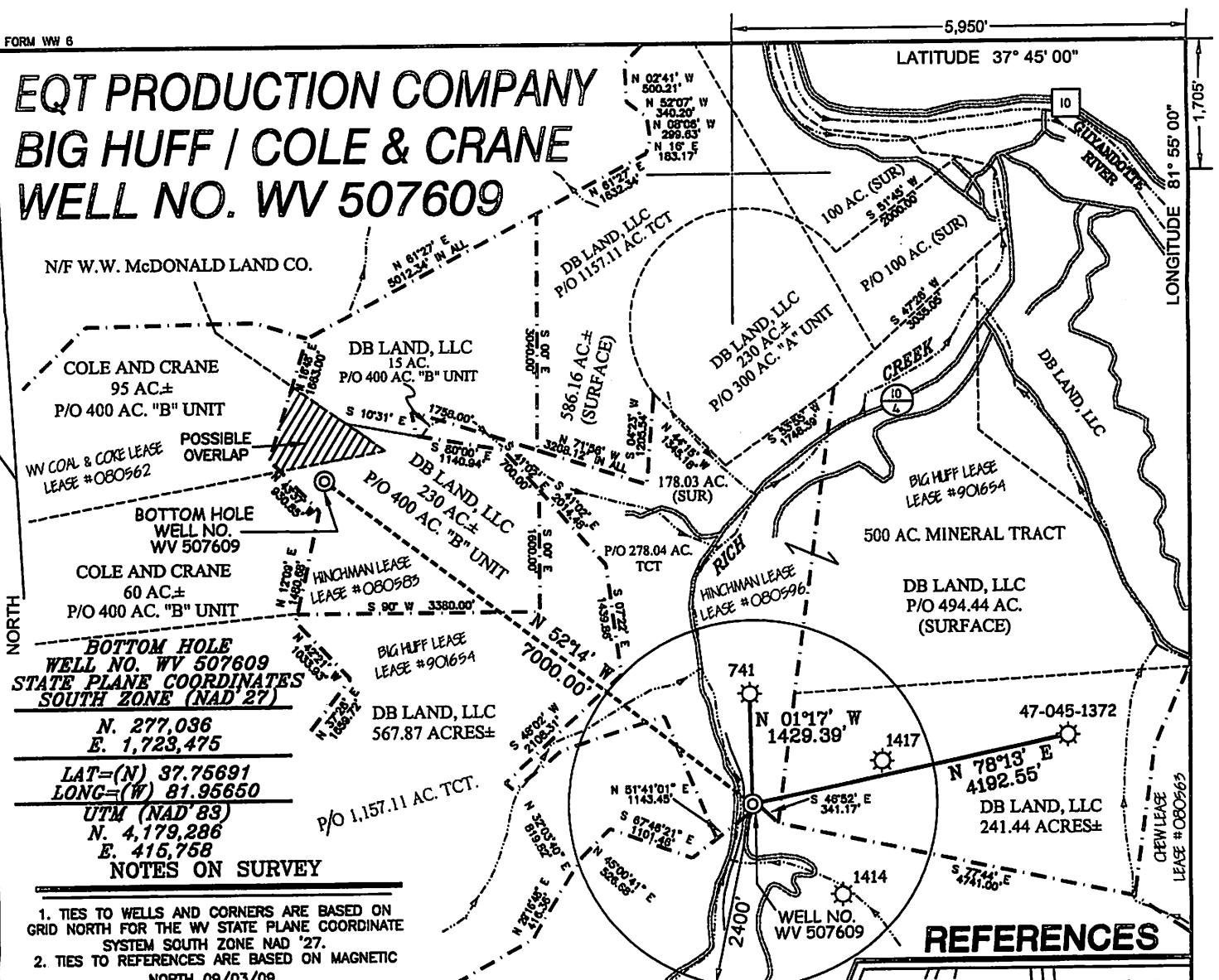


EQT PRODUCTION COMPANY BIG HUFF / COLE & CRANE WELL NO. WV 507609



N/F W.W. McDONALD LAND CO.

DB LAND, LLC
15 AC.
P/O 400 AC. "B" UNIT

COLE AND CRANE
95 AC±
P/O 400 AC. "B" UNIT

WV COAL & CORE LEASE
LEASE #080562

POSSIBLE
OVERLAP

BOTTOM HOLE
WELL NO.
WV 507609

COLE AND CRANE
60 AC±
P/O 400 AC. "B" UNIT

BOTTOM HOLE
WELL NO. WV 507609
STATE PLANE COORDINATES
SOUTH ZONE (NAD '27)

N. 277,036
E. 1,723,475

LAT=(N) 37.75691
LONG=(W) 81.95650
UTM (NAD '83)
N. 4,179,286
E. 415,758

NOTES ON SURVEY

1. TIES TO WELLS AND CORNERS ARE BASED ON GRID NORTH FOR THE WV STATE PLANE COORDINATE SYSTEM SOUTH ZONE NAD '27.
2. TIES TO REFERENCES ARE BASED ON MAGNETIC NORTH 09/03/09.
3. LEASE BOUNDARY SHOWN HEREON TAKEN FROM A DESCRIPTION RECORDED IN LEASE BOOK 15 PAGE 305 AND A PLAT RECORDED IN MAP BOOK 6 PAGE 144 & OTHER DEEDS/INFORMATION.
4. SURFACE OWNER AND ADJOINER INFORMATION TAKEN FROM THE ASSESSOR AND COUNTY CLERK RECORDS OF LOGAN COUNTY IN JULY, 2010.
5. WELL LAT./LONG. (NAD'27) ESTABLISHED BY DGPS(SUBMETER MAPPING GRADE).
6. ORIGINAL PLAT DATED 10/21/09 REVISED 01/04/10 TO EXTEND HORIZONTAL LEG & CHANGE BOTTOM HOLE COORDINATES, ETC.
PLAT REVISED 10/04/10 TO CHANGE TOP & BOTTOM HOLE COORDINATES & ADD UTM COORDINATES, ETC.



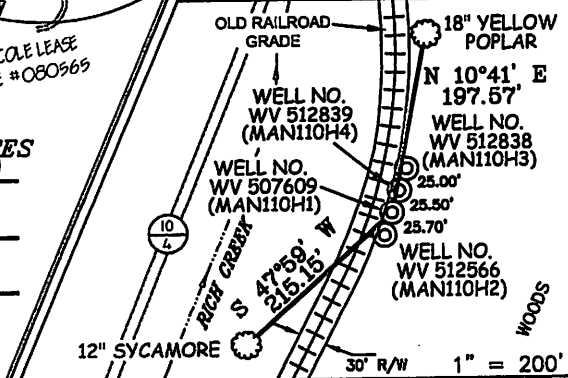
COLE & CRANE REAL ESTATE TRUST
1,061.79 ACRES±

WELL NO. WV 507609
STATE PLANE COORDINATES
SOUTH ZONE (NAD '27)

N. 272,749
E. 1,729,009

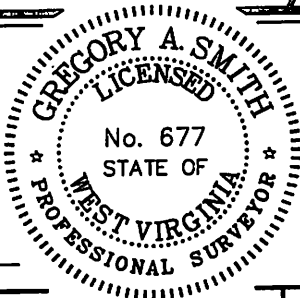
LAT=(N) 37.74529
LONG=(W) 81.93721
UTM (NAD '83)
N. 4,177,980
E. 417,445

REFERENCES



I THE UNDERSIGNED, HEREBY CERTIFY THAT THIS PLAT IS CORRECT TO THE BEST OF MY KNOWLEDGE AND BELIEF AND SHOWS ALL THE INFORMATION REQUIRED BY LAW AND THE REGULATIONS ISSUED AND PRESCRIBED BY THE DIVISION OF ENVIRONMENTAL PROTECTION.

P.S. 677 *Gregory A. Smith*



(+) DENOTES LOCATION OF WELL ON UNITED STATES TOPOGRAPHIC MAPS.

DATE OCTOBER 07, 20 10

OPERATORS WELL NO. WV 507609

API WELL NO. 47-045-02353H

STATE WV COUNTY LOGAN PERMIT 02353H

CANCELLED

STATE OF WEST VIRGINIA
DIVISION OF ENVIRONMENTAL PROTECTION
OFFICE OF OIL AND GAS



MINIMUM DEGREE OF ACCURACY 1/2500 FILE NO. 4140P507609R2 (283-65)

PROVEN SOURCE OF ELEVATION DGPS (SUBMETER MAPPING GRADE) SCALE 1" = 2000'

WELL TYPE: OIL GAS LIQUID INJECTION WASTE DISPOSAL IF "GAS" PRODUCTION STORAGE DEEP SHALLOW

LOCATION:
ELEVATION 888' WATERSHED RICH CREEK

DISTRICT TRIADELPHIA COUNTY LOGAN QUADRANGLE MAN 7.5'

SURFACE OWNER DB LAND, LLC ACREAGE 494.44±

ROYALTY OWNER PARDEE MINERALS (943.04 AC±) / COLE & CRANE REAL ESTATE TRUST (12,096.65 AC±) / PARDEE MINERALS (1,257.081 AC±) / PARDEE MINERALS (1,617.111 AC±)

PROPOSED WORK:
DRILL CONVERT DRILL DEEPER REDRILL FRACTURE OR STIMULATE PLUG OFF OLD

FORMATION PERFORATE NEW FORMATION PLUG AND ABANDON CLEAN OUT AND REPLUG OTHER

PHYSICAL CHANGE IN WELL (SPECIFY) _____ TARGET FORMATION LOWER HURON

ESTIMATED DEPTH 4,370' (TOTAL VERTICAL DEPTH)

WELL OPERATOR EQT PRODUCTION COMPANY DESIGNATED AGENT REX C. RAY

ADDRESS 1710 PENNSYLVANIA AVENUE ADDRESS 1710 PENNSYLVANIA AVENUE

CHARLESTON, WV 25302 CHARLESTON, WV 25302