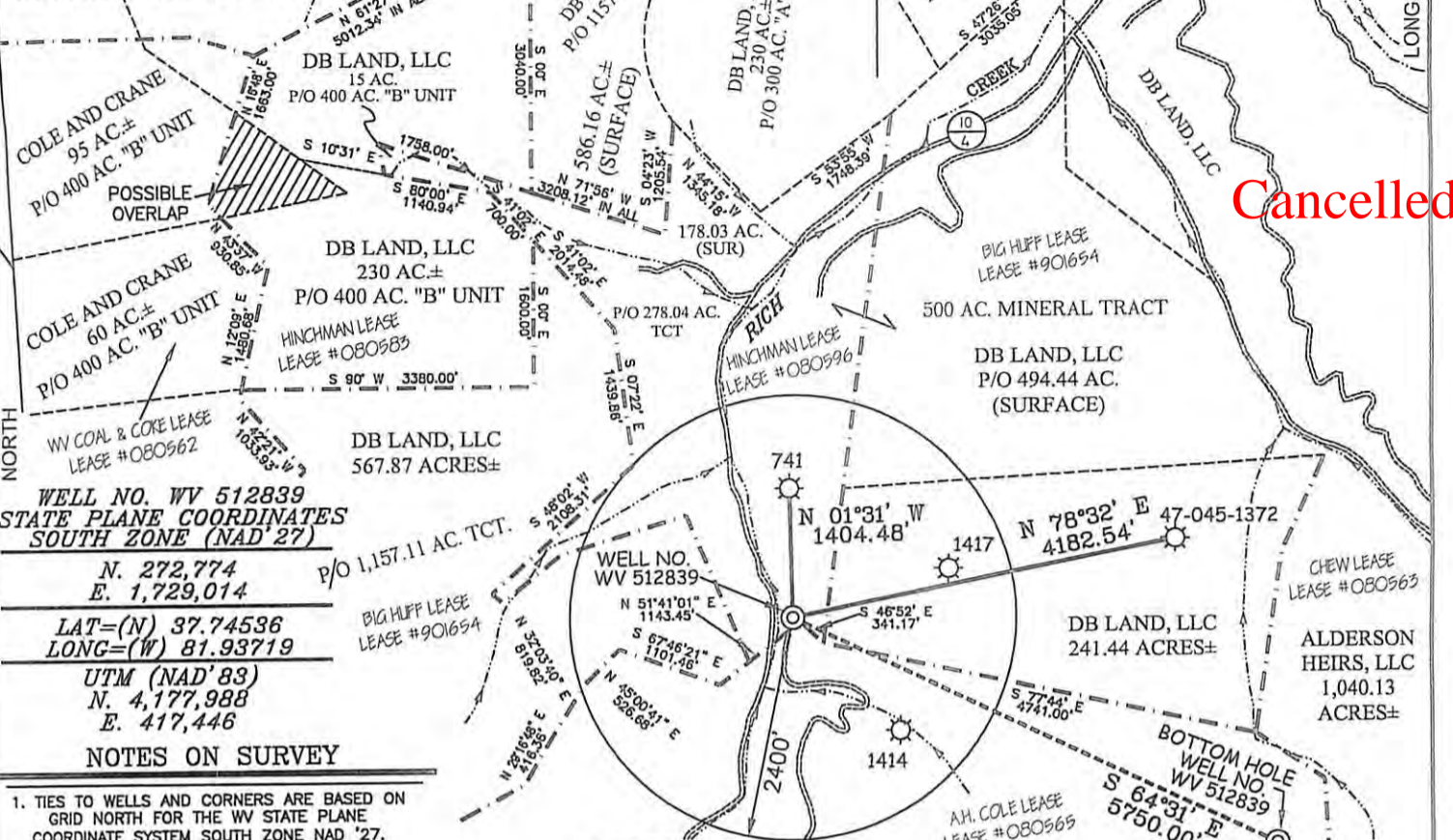


EQT PRODUCTION COMPANY BIG HUFF / COLE & CRANE WELL NO. WV 512839

N/F W.W. McDONALD LAND CO.



**WELL NO. WV 512839
 STATE PLANE COORDINATES
 SOUTH ZONE (NAD'27)**

N. 272,774
 E. 1,729,014

LAT=(N) 37.74536
 LONG=(W) 81.93719

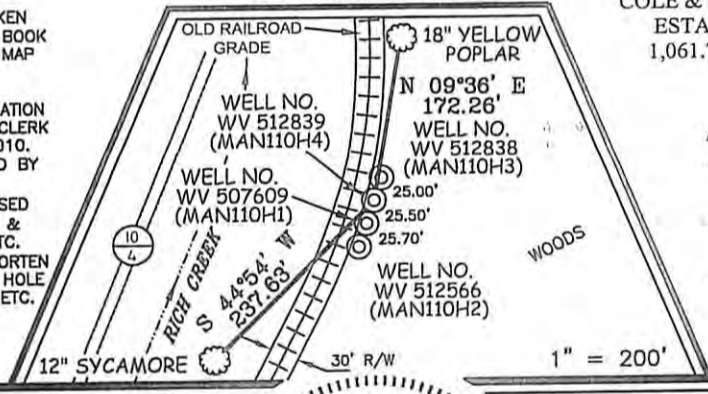
UTM (NAD'83)
 N. 4,177,988
 E. 417,446

NOTES ON SURVEY

1. TIES TO WELLS AND CORNERS ARE BASED ON GRID NORTH FOR THE WV STATE PLANE COORDINATE SYSTEM SOUTH ZONE NAD '27.
2. TIES TO REFERENCES ARE BASED ON MAGNETIC NORTH 09/03/09.
3. LEASE BOUNDARY SHOWN HEREON TAKEN FROM A DESCRIPTION RECORDED IN LEASE BOOK 15 PAGE 305 AND A PLAT RECORDED IN MAP BOOK 6 PAGE 144 & OTHER DEEDS/INFORMATION.
4. SURFACE OWNER AND ADJOINER INFORMATION TAKEN FROM THE ASSESSOR AND COUNTY CLERK RECORDS OF LOGAN COUNTY IN JULY, 2010.
5. WELL LAT./LONG. (NAD'27) ESTABLISHED BY DGPS(SUBMETER MAPPING GRADE).
6. ORIGINAL PLAT DATED 10/21/09 REVISED 01/04/10 TO EXTEND HORIZONTAL LEG & CHANGE BOTTOM HOLE COORDINATES, ETC. PLAT REVISED 10/04/10 TO ROTATE & SHORTEN HORIZONTAL LEG, CHANGE TOP & BOTTOM HOLE COORDINATES & ADD UTM COORDINATES, ETC.



REFERENCES



**BOTTOM HOLE
 WELL NO. WV 512839
 STATE PLANE COORDINATES
 SOUTH ZONE (NAD'27)**

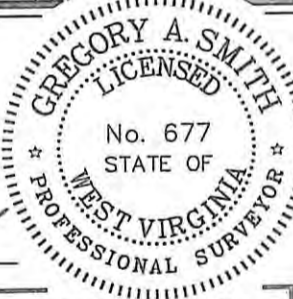
N. 270,301
 E. 1,734,205

LAT=(N) 37.73871
 LONG=(W) 81.91916

UTM (NAD'83)
 N. 4,177,234
 E. 419,028

I THE UNDERSIGNED, HEREBY CERTIFY THAT THIS PLAT IS CORRECT TO THE BEST OF MY KNOWLEDGE AND BELIEF AND SHOWS ALL THE INFORMATION REQUIRED BY LAW AND THE REGULATIONS ISSUED AND PRESCRIBED BY THE DIVISION OF ENVIRONMENTAL PROTECTION.

P.S. 677 *Gregory A. Smith*



(+) DENOTES LOCATION OF WELL ON UNITED STATES TOPOGRAPHIC MAPS.
 DATE OCTOBER 07, 20 10
 OPERATORS WELL NO. WV 512839
 API WELL NO. 47-045-02352H **REVISED**
 STATE COUNTY PERMIT

MINIMUM DEGREE OF ACCURACY 1 / 2500 FILE NO. 4140P512839R2 (283-65)
 PROVEN SOURCE OF ELEVATION DGPS (SUBMETER MAPPING GRADE) SCALE 1" = 2000'

STATE OF WEST VIRGINIA
 DIVISION OF ENVIRONMENTAL PROTECTION
 OFFICE OF OIL AND GAS

WELL TYPE: OIL GAS INJECTION WASTE DISPOSAL IF "GAS" PRODUCTION STORAGE DEEP SHALLOW

LOCATION: ELEVATION 888' WATERSHED RICH CREEK
 DISTRICT TRIADELPHIA COUNTY LOGAN QUADRANGLE MAN 7.5'
 SURFACE OWNER DB LAND, LLC ACREAGE 494.44±
 ROYALTY OWNER PARDEE MINERALS (943.04 AC.±) / COLE & CRANE REAL ESTATE TRUST (12,096.65 AC.±) / PARDEE MINERALS (1,257.061 AC.±)
 PROPOSED WORK: LEASE NO. 080596 / 080565 / 901654
 DRILL CONVERT DRILL DEEPER REDRILL FRACTURE OR STIMULATE PLUG OFF OLD
 FORMATION PERFORATE NEW FORMATION PLUG AND ABANDON CLEAN OUT AND REPLUG OTHER
 PHYSICAL CHANGE IN WELL (SPECIFY) _____ TARGET FORMATION LOWER HURON / SILTSTONE
 ESTIMATED DEPTH 4,040' (TOTAL VERTICAL DEPTH)

WELL OPERATOR EQT PRODUCTION COMPANY DESIGNATED AGENT REX C. RAY
 ADDRESS 1710 PENNSYLVANIA AVENUE ADDRESS 1710 PENNSYLVANIA AVENUE
CHARLESTON, WV 25302 CHARLESTON, WV 25302

01/04/2013