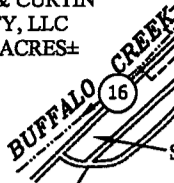


PARDEE LAND COMPANY LEASE 18,000 ACRES± WELL NO. WV 512591

BOTTOM HOLE
WELL NO. WV 512591

PARDEE & CURTIN
REALTY, LLC
1,742.85 ACRES±



BOTTOM HOLE
WELL NO. WV 512591
STATE PLANE COORDINATES
SOUTH ZONE (NAD '27)

N. 293,057
E. 1,794,710

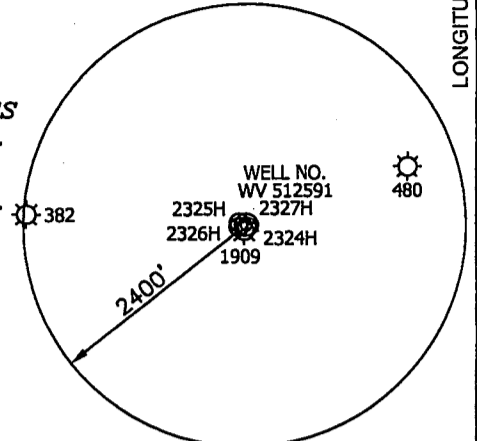
LAT=(N) 37.80266
LONG=(W) 81.71054

UTM (NAD'83)
N. 4,184,170
E. 437,464

EXISTING WELL
A.P.I. 47-045-1909
STATE PLANE COORDINATES
SOUTH ZONE (NAD '27)

N. 287,214
E. 1,798,662

LAT=(N) 37.78670
LONG=(W) 81.69670



WELL NO. WV 512591
STATE PLANE COORDINATES
SOUTH ZONE (NAD '27)

N. 287,305
E. 1,798,698

LAT=(N) 37.78695
LONG=(W) 81.69658

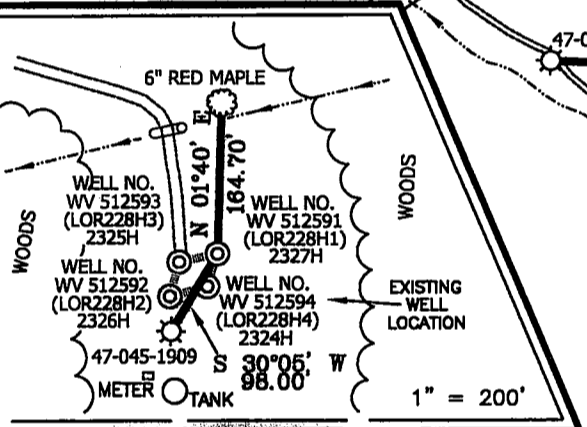
UTM (NAD'83)
N. 4,182,418
E. 438,680

PARDEE & CURTIN
REALTY, LLC
2,936 ACRES±
(SURFACE)

N 34°44' W
7000.00'

TO CO. RT. 16/80

REFERENCES

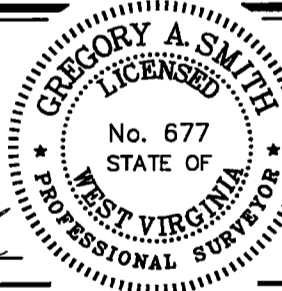


NOTES ON SURVEY

1. TIES TO WELLS AND CORNERS ARE BASED ON STATE PLANE
2. TIES TO REFERENCES ARE BASED ON GRID NORTH WV SOUTH ZONE NAD '27.
3. LEASE BOUNDARY DOES NOT APPEAR WITHIN THE SCOPE OF THIS PLAT.
4. SURFACE OWNER INFORMATION TAKEN FROM THE ASSESSOR AND COUNTY CLERK RECORDS OF LOGAN COUNTY IN JULY, 2010.
5. WELL LAT./LONG. ESTABLISHED BY DGPS(SUBMETER MAPPING GRADE).
6. ORIGINAL PLAT DATED 09/03/09 REVISED 11/29/10 TO ROTATE & EXTEND HORIZONTAL LEG, CHANGE BOTTOM HOLE COORDINATES & ADD UTM COORDINATES, ETC.

I THE UNDERSIGNED, HEREBY CERTIFY THAT THIS PLAT IS CORRECT TO THE BEST OF MY KNOWLEDGE AND BELIEF AND SHOWS ALL THE INFORMATION REQUIRED BY LAW AND THE REGULATIONS ISSUED AND PRESCRIBED BY THE DIVISION OF ENVIRONMENTAL PROTECTION.

P.S. *Gregory A. Smith*



(+) DENOTES LOCATION OF WELL ON UNITED STATES TOPOGRAPHIC MAPS.

DATE NOVEMBER 29, 20 10

OPERATORS WELL NO. WV 512591

API WELL NO. 47-045-2327H
STATE COUNTY PERMIT

MINIMUM DEGREE OF ACCURACY 1/2500 FILE NO. 3906P512591R (283-61)
PROVEN SOURCE OF ELEVATION DGPS (SUBMETER MAPPING GRADE) SCALE 1" = 1000'

STATE OF WEST VIRGINIA
DIVISION OF ENVIRONMENTAL PROTECTION
OFFICE OF OIL AND GAS



WELL TYPE: OIL GAS LIQUID INJECTION WASTE DISPOSAL IF "GAS" PRODUCTION STORAGE DEEP SHALLOW

LOCATION: ELEVATION 1,614' WATERSHED DAVY BRANCH OF BUFFALO CREEK
DISTRICT TRIADELPHIA COUNTY LOGAN QUADRANGLE LORADO 7.5'
SURFACE OWNER PARDEE & CURTIN REALTY, LLC ACREAGE 2,936±
ROYALTY OWNER PARDEE MINERALS, LLC LEASE ACREAGE 18,000±
PROPOSED WORK: LEASE NO. 004107

DRILL CONVERT DRILL DEEPER REDRILL FRACTURE OR STIMULATE PLUG OFF OLD FORMATION
PERFORATE NEW FORMATION PLUG AND ABANDON CLEAN OUT AND REPLUG OTHER
PHYSICAL CHANGE IN WELL (SPECIFY) _____ TARGET FORMATION LOWER HURON
ESTIMATED DEPTH 5,290' (TOTAL VERTICAL DEPTH)

WELL OPERATOR EQT PRODUCTION COMPANY DESIGNATED AGENT REX C. RAY
ADDRESS 1710 PENNSYLVANIA AVENUE ADDRESS 1710 PENNSYLVANIA AVENUE
CHARLESTON, WV 25302 CHARLESTON, WV 25302