

WW-7  
8-30-06



West Virginia Department of Environmental Protection  
Office of Oil and Gas  
**WELL LOCATION FORM: GPS**

API: 47-045-00470 WELL NO.: WV 023840 (Pardee Land Company #45)

FARM NAME: Pardee

RESPONSIBLE PARTY NAME: EQT Production Company

COUNTY: Logan DISTRICT: Triadelphia

QUADRANGLE: Lorado 7.5'

SURFACE OWNER: Pardee Minerals, LLC

ROYALTY OWNER: Pardee Minerals, LLC

UTM GPS NORTHING: 4,184,398

UTM GPS EASTING: 435.827 GPS ELEVATION: 484 m (1587 ft)

The Responsible Party named above has chosen to submit GPS coordinates in lieu of preparing a new well location plat for a plugging permit or assigned API number on the above well. The Office of Oil and Gas will not accept GPS coordinates that do not meet the following requirements:

1. Datum: NAD 1983, Zone: 17 North, Coordinate Units: meters, Altitude: height above mean sea level (MSL) – meters.
2. Accuracy to Datum – 3.05 meters
3. Data Collection Method:

Survey grade GPS     : Post Processed Differential       
Real-Time Differential     

Mapping Grade GPS X: Post Processed Differential X  
Real-Time Differential     

4. **Letter size copy of the topography map showing the well location.**

I the undersigned, hereby certify this data is correct to the best of my knowledge and belief and shows all the information required by law and the regulations issued and prescribed by the Office of Oil and Gas.

Ben B. Singleton  
Signature

Date

9/30/13

P.S. 2092  
Title

RECEIVED  
Office of Oil and Gas  
OCT 16 2013  
WV Department of  
Environmental Protection

4500 470P

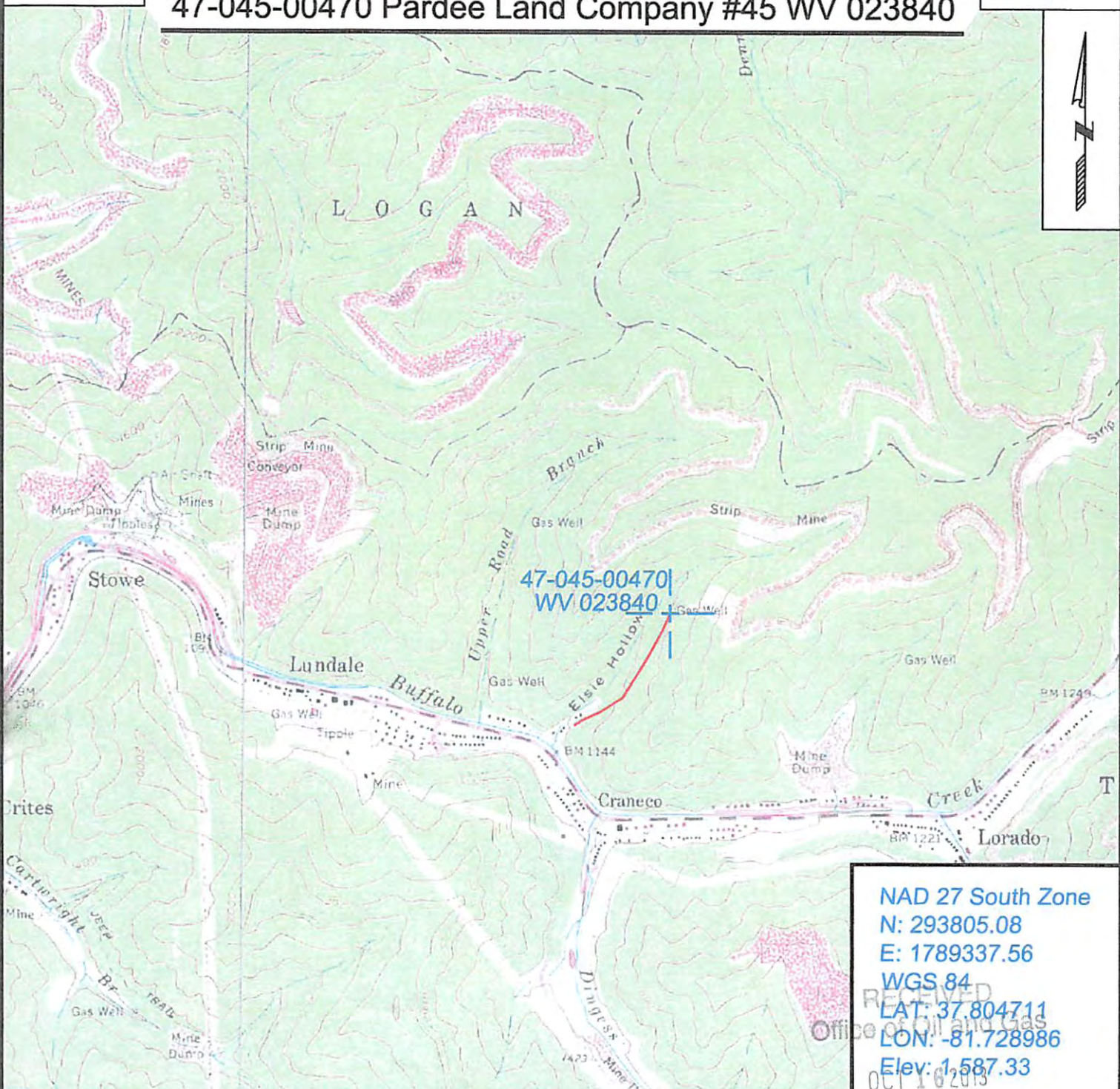
Topo Quad: Lorado Scale: 1" = 2000'

County: Logan Date: September 30, 2013

District: Triadelphia Project No: 21-21-00-08

**47-045-00470 Pardee Land Company #45 WV 023840**

Topo



NAD 27 South Zone  
 N: 293805.08  
 E: 1789337.56  
 WGS 84  
 LAT: 37.804711  
 LON: -81.728986  
 Elev: 1,587.33

RECEIVED  
 Office of Oil and Gas  
 OCT 16 2013



SURVEYING AND MAPPING SERVICES PERFORMED BY:  
**ALLEGHENY SURVEYS, INC.**  
 1-800-482-8606  
 P.O. BOX 438  
 BIRCH RIVER, WV 26610  
 PH: (304) 649-8606  
 FAX: (304) 649-8608

PREPARED FOR:  
 WV Department of  
**EQT Production Company**  
 P.O. Box 280  
 Bridgeport, WV 26330