

Latitude

37SS

0518

Longitude

→ 7.5' loc
ELA
7/16/1999

1.74S
0.45W

Topo Location

7.5' Loc. _____ 15' Loc. 1.74S
_____ (calc.) 0.45W

Company _____

Farm _____

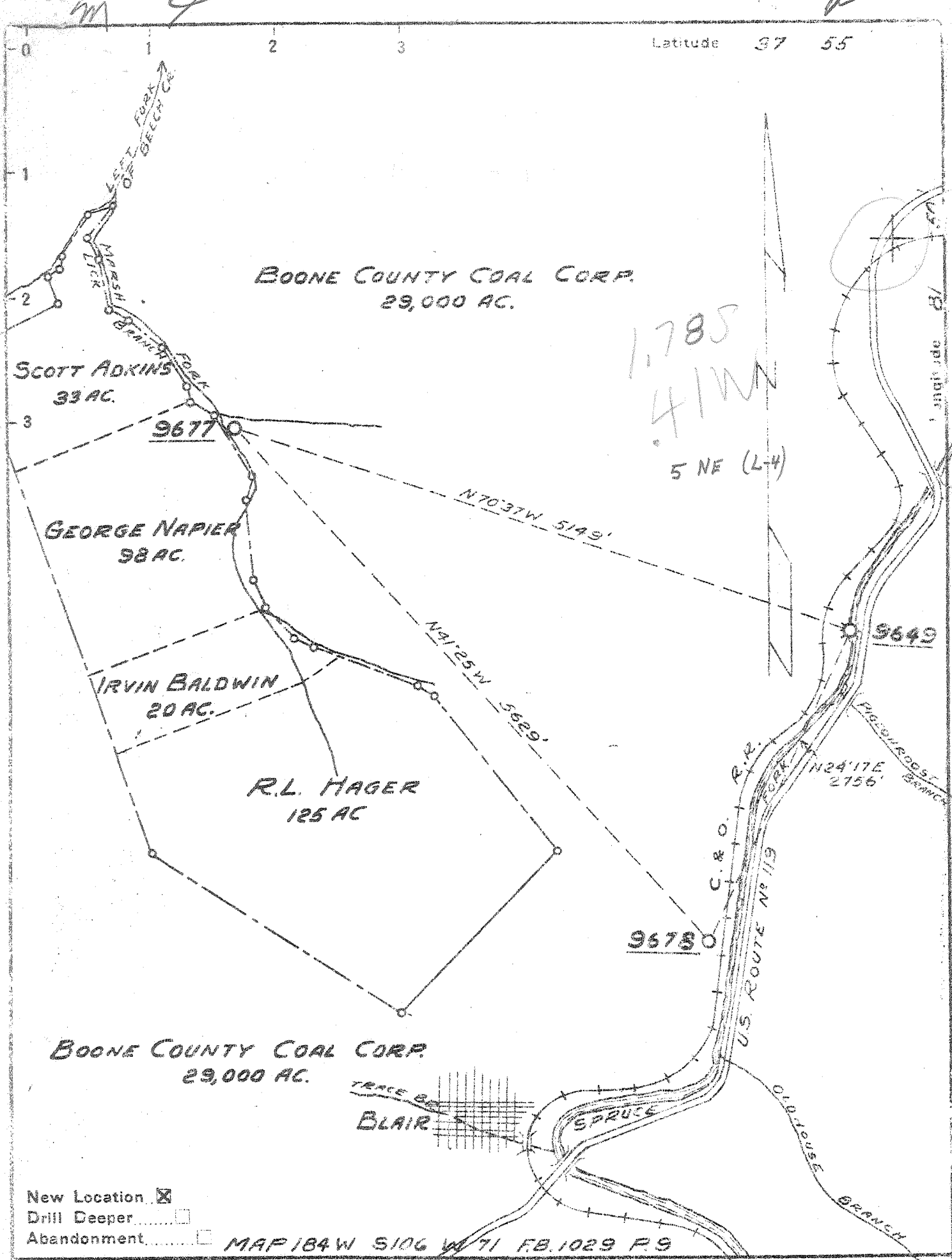
15' Quad Logan C
(sec.) _____

7.5' Quad Clothier _____

District _____

WELL LOCATION PLAT

County 045 Permit 287



- New Location
- Drill Deeper
- Abandonment

MAP 184W 5106 W 71 FB. 1029 P. 9

Company	HOPE NATURAL GAS CO.
Address	CLARKSBURG W.VA.
Farm	BOONE COUNTY COAL CORP.
Tract	Acres 29000 Lease No. 60352
Well (Farm) No.	Serial No. 9677
Elevation (Spirit Level)	1079'
Quadrangle	LOGAN - C Clothier 7.5'
County	LOGAN District LOGAN
Engineer	Guy H. Bradley
Engineer's Registration No.	2425
File No.	Drawing No.
Date	DEC. 14, 1951 Scale 1" = 1000'

STATE OF WEST VIRGINIA
DEPARTMENT OF MINES
OIL AND GAS DIVISION
CHARLESTON

WELL LOCATION MAP
FILE NO. LOG-287

- + Denotes location of well on United States Topographic Maps, scale 1 to 62,500, latitude and longitude lines being represented by border lines as shown.
- Denotes one inch spaces on border line of original tracing

STATE OF WEST VIRGINIA
DEPARTMENT OF MINES
OIL AND GAS DIVISION 12

WELL RECORD

Oil or Gas Well Oil
dry

Permit No. 103-287
Company Hays Natural Gas Company
Address 445 W. Main St., Charleston, West Va.
Farm Sumner County Coal Corp. Acres 29, 000
Location (waters) _____
Well No. 9677 Elev. 1079
District Logan County Logan
The surface of tract is owned in fee by Sumner Co. Coal Corp.
Sumner Co. Address Sharplins, W. Va.
Mineral rights are owned by Sumner County Coal Corp.
Sumner Sharplins, W. Va.
Drilling commenced Dec. 28, 1952
Drilling completed May 6, 1953
Date Shut Not From _____ To _____
With _____
Open Flow /10ths Water in _____ Inch
/10ths Merc. in _____ Inch
Volume _____ Cu. Ft.
Back Pressure _____ lbs. _____ hrs.
Oil _____ bbls. 1st 24 hrs.
Fresh water 57, 161 feet 350 feet
Salt water 1411 & 1437 feet 1593 feet

Casing and Tubing	Used in Drilling	Left in Well	Packers
Size			
14	26	24	Kind of Packin
12	27 1/2	20 1/2	
10	53	53	Size of
8 1/4	161	161	
6 1/4	2008	2008	Depth set
5 1/2 10	2243	2243	
4			Perf. top
3			Perf. bottom
Lines Used			Perf. top
			Perf. bottom

CASING CEMENTED 5 1/2 size 32 1/2 No. F. 2224 Date _____

COAL WAS ENCOUNTERED AT 345 FEET 36 INCHES
409 FEET 48 INCHES 518 FEET 48 INCHES
FEET INCHES FEET INCHES

Formation	Color	Hard or Soft	Top	Bottom	Oil, Gas or Water	Depth Found	Remarks
Drift		Soft	28	29			
Sand		"	29	93	water	57'	
Slate		"	93	120	"	165'	hole full
Sand		Hard	120	230			
Slate		soft	230	238			
Sand		hard	238	293			
Lime		"	293	325			
Slate		soft	325	343			
Coal		"	343	348			
Sand		hard	348	409	water	350	hole full
Coal		soft	409	413			
Sand		hard	413	444			
Slate		soft	444	457			
Lime	grey	hard	457	487			
Sand	white	hard	487	518			
Coal		soft	518	522			
Slate	black	"	522	546			
Sand	white	hard	546	706			
Slate	black	soft	706	737			
Sand	white	hard	737	822	Gas	740	show only
Slate	black	soft	822	884			
Sand	white	hard	884	925			
Slate	black	soft	925	944			
Sand	grey	hard	944	1208			
Slate & shells		soft	1208	1310			
Sand - shells	Grey	hard	1310	1509	water	1411	1 boiler br.
Slat & shells		soft	1509	1532	"	1437	hole full -oil
Sand	white	hard	1532	1690	"	1593	
Slate & shells		soft	1690	1770			
Sand	grey		1770	1830			
Red Rock	red	soft	1830	1874			
Lime	grey	med.	1874	1900			
Red Rock	red	soft	1900	1906			
Slate & shells		"	1906	2040			
Lime	dark	med.	1940	2021			
Red rock	red	soft	2021	2027			
Slate & shells		"	2027	2113			
MAXON	grey	hard	2113	2177			

(Over)



Formation	Color	Hard or Soft	Top	Bottom	Oil, Gas or Water	Depth Found	Remarks
Little Linn	31	Hard	2177	2216			
Slate - <i>plow</i>	black	soft	2216	2219			
Big Line	white	hard	2219	2475			
Big Injun	red	soft	2475	2527			
Slate & shells		"	2527	2617			
Weir Shells	grey	hard	2617	2650			
Slate & shells		soft	2650	2955			
Shale - <i>lopper</i>	black	"	2955	2969			
ESSEA	grey	hard	2969	3002			
Slate - shells			3002	4085	Gas	3625	show
Shale	black	soft	4085	4528			
Slate	white	"	4528	4890			
Shale - <i>Hamilton</i>	black	"	4890	5227			
NUMEROUS	white	hard	5227	5286			
HELDENBERG LINE			5286				
		Total Depth	485	548			

5227
1079

- 4148

Date May 20, 1952
APPROVED Hope Natural Gas Company, Owner
B. R. NUZUM
By General Superintendent (Title)