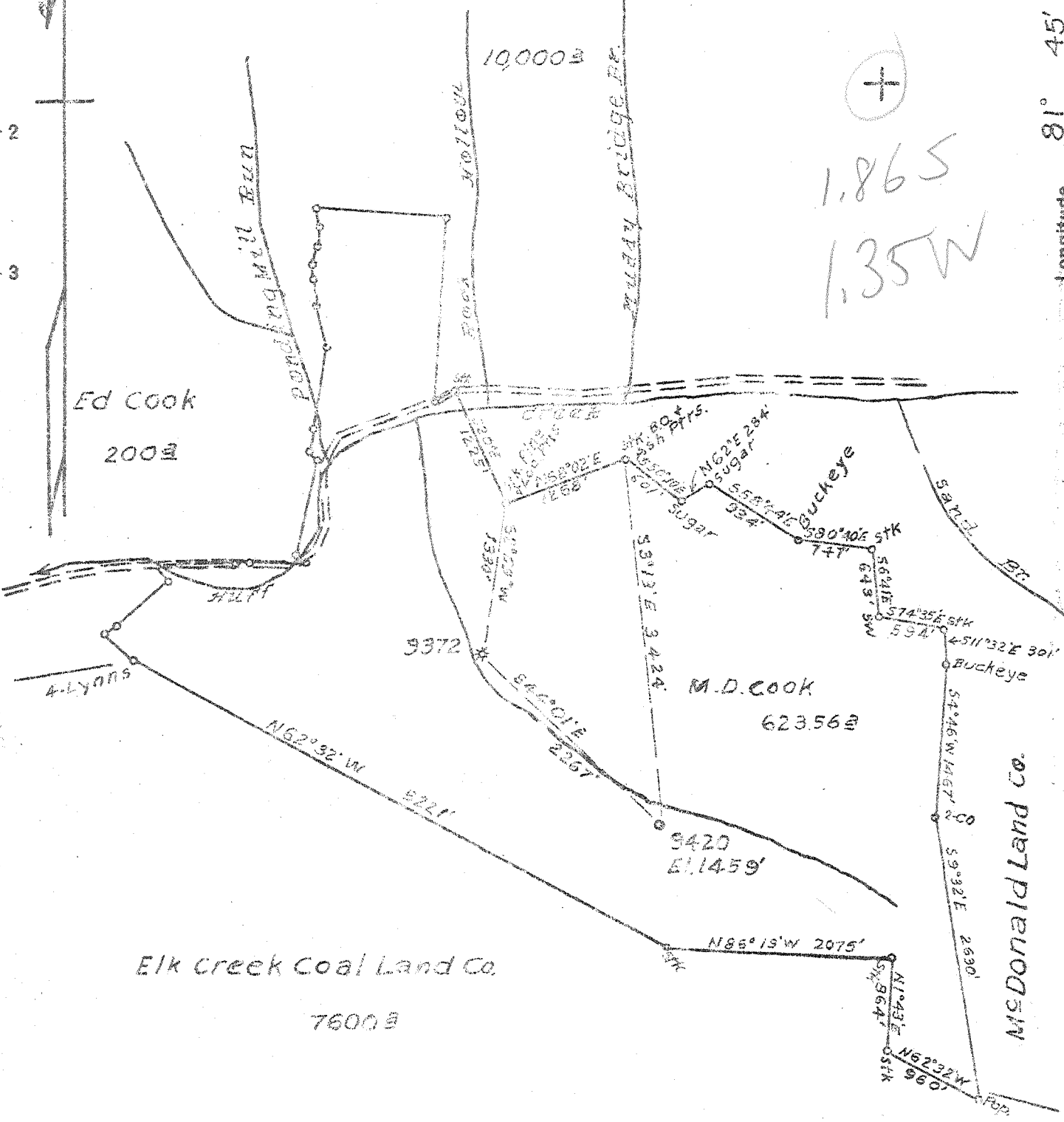


Buffalo Creek Coal & Coke Co.



- New Location
- Drill Deener
- Abandonment

Map Sh. 203-W S118 W67 FB904 P-14-15

Company Hope Natural Gas Co.
 Address Clarksburg, W.Va.
 Farm M.D. Cook
 Tract _____ Acres 623.56 Lease No. 55682
 Well (Farm) No. _____ Serial No. 9420
 Elevation (Spirit Level) 1459'
 Quadrangle Gilbert
 County Logan District Tridelpnia
 Engineer W.M. Bowers
 Engineer's Registration No. 900
 File No. _____ Drawing No. _____
 Date 3-6-50 Scale 1" = 1320'

STATE OF WEST VIRGINIA
 DEPARTMENT OF MINES
 OIL AND GAS DIVISION
 CHARLESTON

WELL LOCATION MAP
 FILE NO. LOG-236

+ Denotes location of well on United States Topographic Maps, scale 1 to 62,500, latitude and longitude lines being represented by border lines as shown.

- Denotes one inch spaces on border line of original tracing.

WEST VIRGINIA DEPARTMENT OF MINES
OIL & GAS DIVISION
W E L L R E C O R D

Permit No. Log 236

Gas Well
CASING & TUBING

Gilbert Quad.

Company

Hope Natural Gas Company

Address

445 West Main St., Clarksburg, W.Va.

Farm

M.D.Cook Acres 623.56

Location

13 35 35

Well No.

9420 Elev. 1459

8 1/2 528 528

District

Triadelphia Logan County

6 5/8 1810 1810

Surface

M.D.Cook et al., Logan, W.Va.

5 3/16 2692 2692

Mineral

Same

CASING CEMENTED:

Commenced

May 17, 1950

5 1/2 x 7 casing set

Completed

Oct. 17, 1950

in 10 and 12 bags

Date shot

10-17-50 Depth 3525 to 3565

cement

with 120 qts. nitro glycerin

561 C.F.

Coal at 116" 12"

Volume

Rock Pressure

Oil

None

Fresh Water

75' H.F.

Salt Water

2162'

Gravel	0	35	Gritty Lime	3078	3170
Slate	35	60	Slate Shells	3170	3510
Sand	60	116	Brown Shale	3510	3523
Coal	116	117	Berea	3523	3565
Sand	117	137	Slate	3565	3595
Slate	137	165	T.D.		
Sand	165	222			
Slate	222	250	Gas 1545 show only		
Sand	250	350	Gas 2960		
Slate	350	395	Gas 2992-3003		
Lime	395	410	Gas 3005-3013 211 M		
Slate	410	490	Gas 3525-65 561 M		
Sand	490	540			
Slate Shells	540	623			
Sand	623	680			
Slate	680	715			
Sand	715	818			
Lime	818	845			
Sand	845	960			
Slate	960	982			
Sand Broken	982	1074			
Slate	1074	1093			
Sand	1093	1462			
Slate	1462	1468			
Sand	1468	1520			
Sand Broken	1520	1526			
Sand Stray	1526	1665			
Slate Shells	1665	1685			
Sand	1685	1802			
Slate	1802	1832			
Red Rock	1832	1842			
Lime	1842	1888			
Ravencliff	1888	1948			
Slate Shells	1948	2051			
Sand	2051	2177			
Red Rock	2177	2200			
Lime	2200	2290			
Slate	2290	2297			
Red Lime	2297	2316			
Lime Grey	2316	2364			
Red Rock and Slate	2364	2440			
Sandy Lime	2440	2468			
Red Rock	2468	2480			
Red Lime	2480	2495			
Slate Shells	2495	2503			
Lower Maxon	2503	2556			
Slate Shells	2556	2580			
Little Lime	2580	2665			
Slate	2665	2677			
Big Lime	2677	3064			
Red Lime	3064	3078			