

Latitude 37 50 +

34

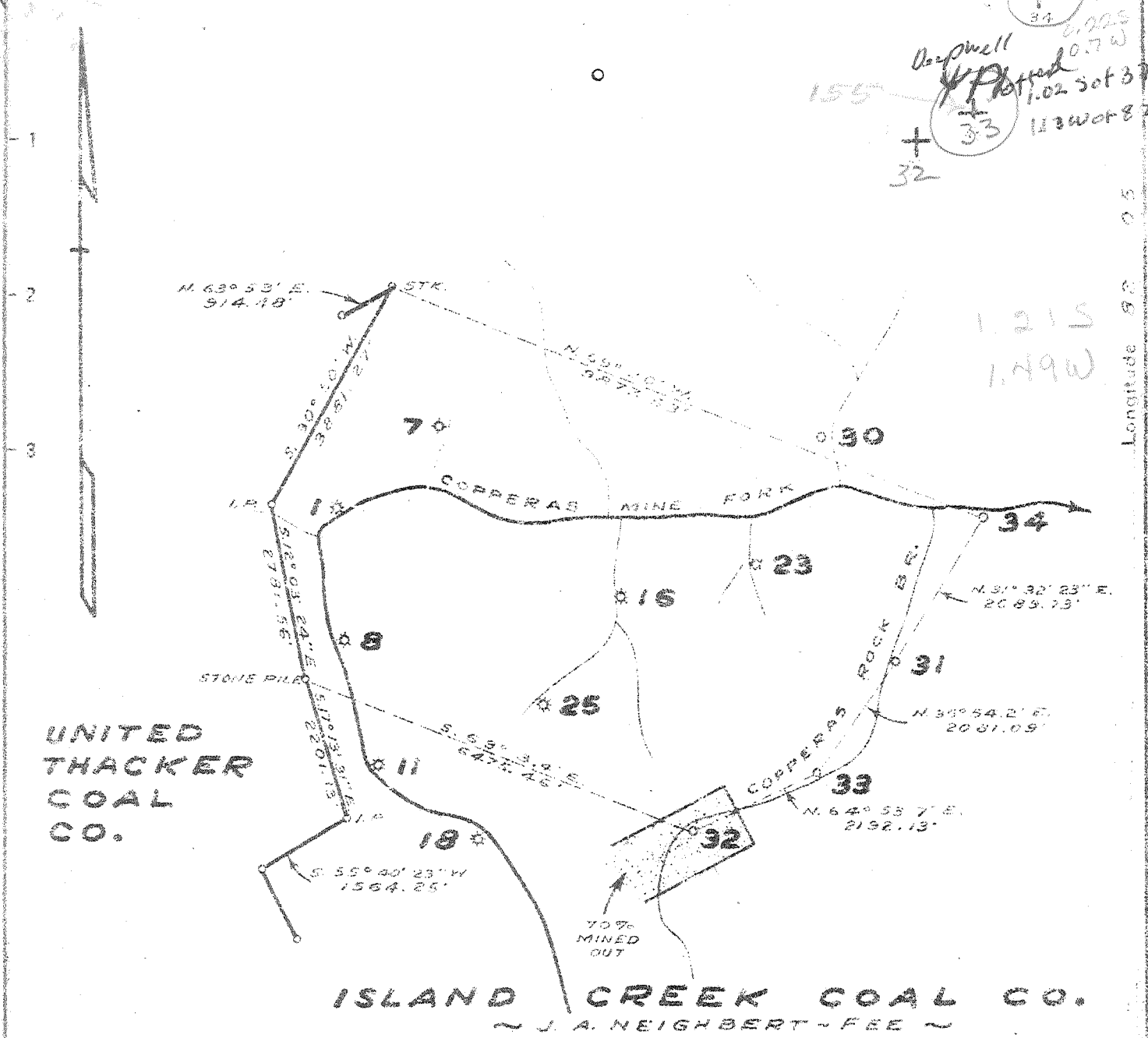
Deepwell

33

1.02 S of 37° 50' S  
1.13 W of 82° 00' S

1.21 S  
1.49 W

Longitude 82 05



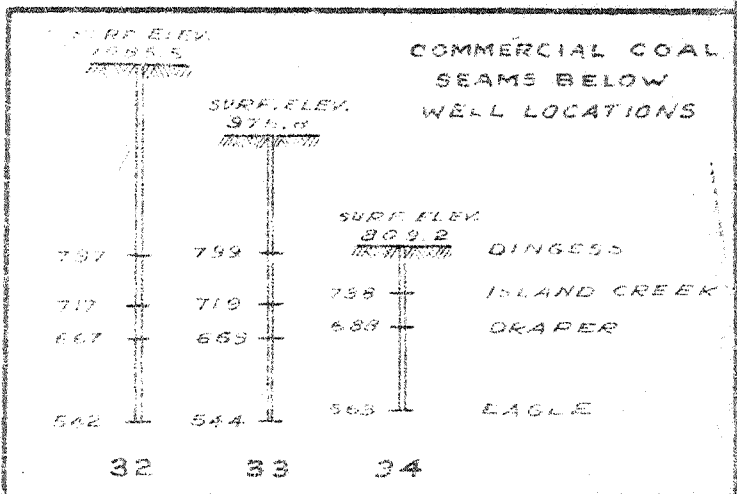
UNITED THACKER COAL CO.

ISLAND CREEK COAL CO. ~ J. A. NEIGHBERT - FEE ~

Logan 155  
1.00 S  
1.13 W  
8 NE (L-3)

New Location X  
Drill Deeper  
Abandonment

THIS MAP BASED ON SURVEY AND DATA FURNISHED BY THE ISLAND CK. COAL CO.



Company COLUMBIAN CARBON CO.  
 Address CHARLESTON W. VA.  
 Farm ISLAND CREEK COAL CO.  
 Tract Acres 34,953.47 Lease No. C-2448  
 Well (Farm) No. 32-33-34 Serial No. 30 274  
 Elevation (Spit Level) 30 274  
 Quadrangle HOLDEN  
 County LOGAN District LOGAN  
 Engineer J. M. Sell  
 Engineer's Registration No. 772  
 File No. 373 Drawing No. 373  
 Date APRIL 10, 1945 Scale 1" = 2400'

STATE OF WEST VIRGINIA DEPARTMENT OF MINES OIL AND GAS DIVISION CHARLESTON

WELL LOCATION MAP

LOG-155; No 33 LOG-156; No 34

+ Denotes location of well on United States Topographic Maps, scale 1 to 62,500. latitude and longitude lines being represented by border lines as shown.

- Denotes one inch spaces on border line of original tracing

Logan-155 - Deep Well

WEST VIRGINIA DEPARTMENT OF MINES  
OIL & GAS DIVISION  
W E L L R E C O R D

Permit No. Log 155  
Holden Quad.

Dry Hole  
CASING & TUBING

Company	Columbian Carbon Company	13 3/8 48#	25'6	Same
Address	Box 873, Charleston 23, W.Va.	10 1/2 36.81#	470'10	"
Farm	Island Creek Coal Co. A 34,953.47	8 1/2 24#	1502'1	Pulled
Location	Copperas Rock Branch	7 22-23#	1959'3	"
Well No.	33-GW-903 Elev. 977.8 DF			
District	Logan Logan County			
Surface	Island Creek Coal Co.			
Mineral	Guaranty Bank Bldg., Huntington, W.Va.			Midget B.H. Packer
Commenced	Same			Size 7"
Completed	6-26-46			Depth 1944' SLM(Pld.)
Not shot	10-1-46			Coal at 264' 36"
Volume	Dry Hole			335' 48"; 436' 24"
Fresh Water	42°H.F.			
Salt Water	1050' 1/4 10" blr.; 1203' H.F.			

Slate	0	25
Sand	25	35
Slate	35	41
Sand	41	133
Slate & Shells	133	148
Sand	148	180
Slate	180	181
Sand	181	230
Slate	230	264
Coal   S. CRK	264	267
Sand	267	295
Slate	295	335
Coal DRAPER	335	339
Slate	339	343
Sand	343	372
Slate	372	420
Sand	420	436
Coal EAGLE	436	438
Slate	438	462
Lime	462	490
466'DLM-468' SLM		
Slate	490	555
Sand	555	610
Slate	610	710
Sand	710	718
Slate	718	774
Sand	774	825
Slate	825	854
Salt Sand	854	1094
Shale	1094	1117
Sand	1117	1126
Shale	1126	1134
Salt Sand	1134	1471
Shale	1471	1483
Lime	1483	1507
1405'DLM-1505' SLM		
Shale	1507	1520
Red Rock	1520	1570
Slate & Shells	1570	1621
Lime	1621	1670
Slate & Shells	1670	1704
Sand	1704	1780
Lime	1780	1805
Slate & Shells	1805	1890
Lime	1890	1910
Shale	1910	1916
Big Lime	1916	2083
1944SLM-1940' DLM		
Big Injun	2083	2158
Slate & Shells	2158	2309
Weir	2309	2395
Slate & Shells	2395	2618
2621'SLM-2620'DLM		
Lime	2618	2624
Slate	2624	2673

Lime	2673	2693
Brown Shale	2693	2725
Berea Sand	2725 SLM	2745
Slate & Shells	2745	3675
Brown Shale	3675	3995
Slate & Shells	3995	4290
Brown Shale	4290	4435
Black Shale	4435	4457
Corniferous Lime	4457 DLM	
	4469 SLM	4472 DLM
		4484 SLM
Total Depth		4484 SLM

Dry Hole -plugged and abandoned 10-9-46

CEMENT RECORD:

7-8-46 10 1/2" casing, ran 128 sacks cement followed by plug. Pumped plug to 460'. No circulation. C.C.Co.Crew

8-4-46 8 5/8" casing. Ran 20 bags aquagel and 1 bale Fibertex. Plug went to 1490'. U.C.Co. Crew

8-15-46 7" casing ran with Midget bottom hole packer. Ran 14 sacks Aquagel and 1 bale Fibertex. Good circulation and returns. C.C.Co. Crew.

4469  
778  
-----  
- 3691

2725  
1916  
-----  
809

2077