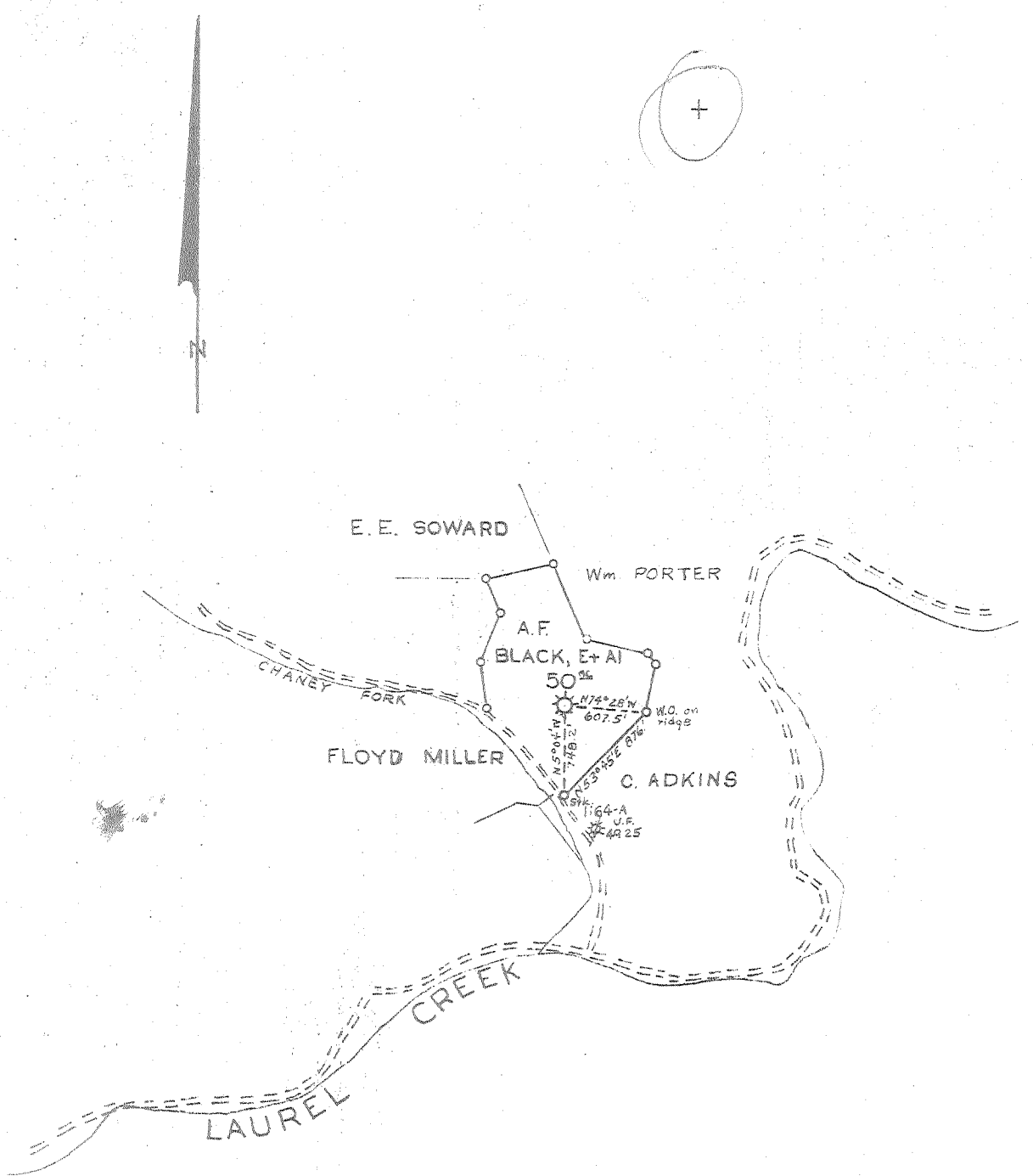


Latitude 38 15'

Longitude 82 05'



New Location   
 Drill Deeper   
 Redrill   
 Abandonment

FEB 11 1962

2.7 W  
 1.60 D

L.G.S.

Company **CUMBERLAND GAS CORP.**  
 Address **BOX 2386 CHARLESTON, W.VA.**  
 Farm **A.F. BLACK, E+AI**  
 Tract \_\_\_\_\_ Acres **50** Lease No. **BR-3**  
 Well (Farm) No. **1** Serial No. **BR-65**  
 Elevation (Spirit Level) **761.00**  
 Quadrangle **MIDKIFF N.W.**  
 County **LINCOLN** District **CARROLL**  
 Engineer **G.H. Hall**  
 Engineer's Registration No. **2602**  
 File No. \_\_\_\_\_ Drawn **19-61**  
 Date **12-20-61** Scale **1" = 1320'**

STATE OF WEST VIRGINIA  
 DEPARTMENT OF MINES  
 OIL AND GAS DIVISION  
 CHARLESTON  
**WELL LOCATION MAP**  
 FILE NO. **LIN-1288-A**

Denotes location of well on United States Topographic Maps, scale 1 to 62,500, latitude and longitude lines being represented by border lines as shown.  
 --- Denotes one inch spaces on border line of original tracing.

A.F. + BLACK ET AL, No. 1 (BR-65) - CUMBERLAND GAS CORP. - LIN-1288-A