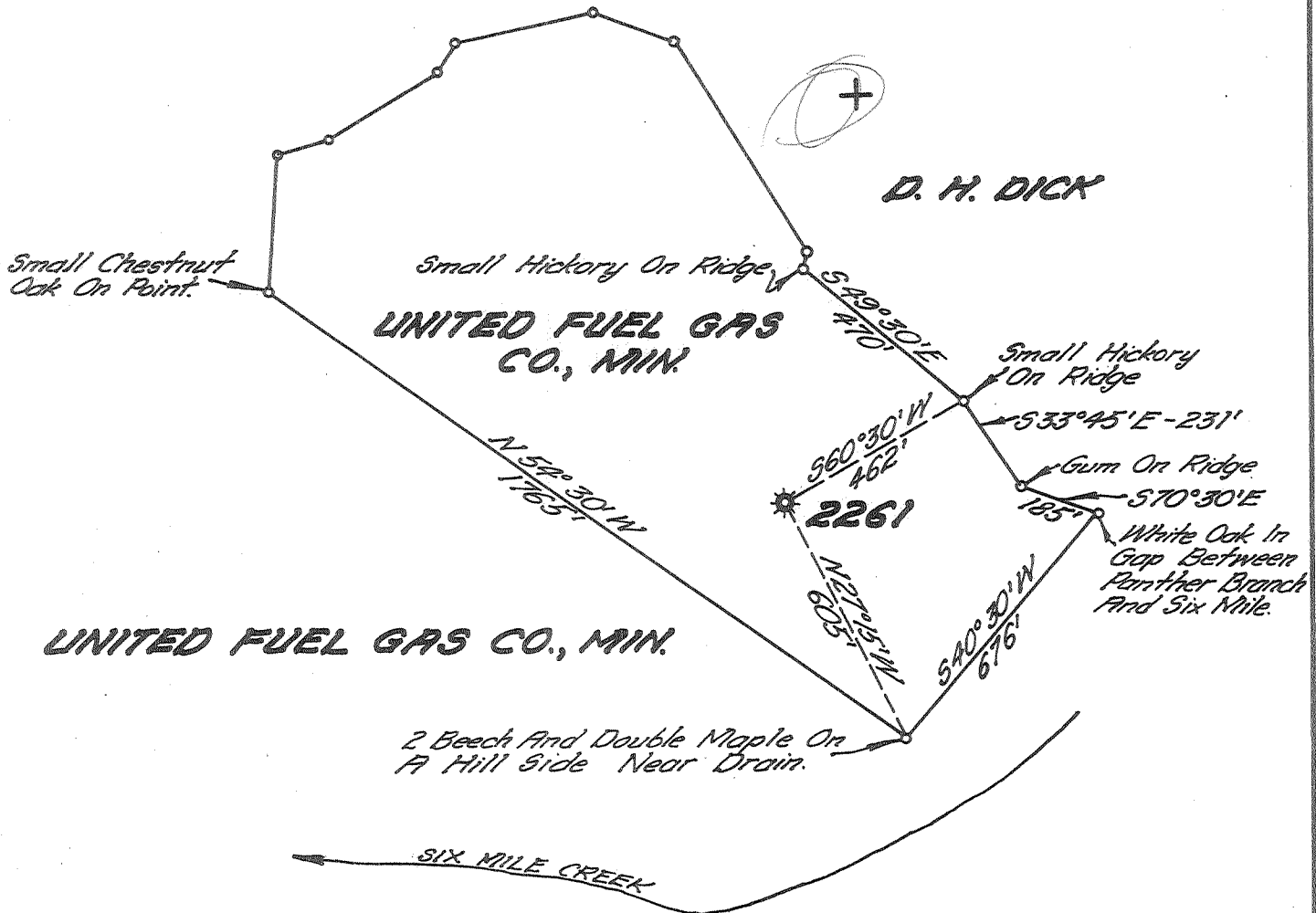


UNITED FUEL GAS CO., MIN.

D. H. DICK



UNITED FUEL GAS CO., MIN.

New Location

Drill Deeper

Abandonment

FEB 1 1960

*2.58 W*  
*3.90*

Company UNITED FUEL GAS CO

Address CHARLESTON, W.VA.

Farm UNITED FUEL GAS CO., MIN.

Tract 7 Acres 8,931.56 Ref. No. 24687

Well (Farm) No. \_\_\_\_\_ Serial No. 2261

Elevation (Spirit Level) 1040.30'

Quadrangle MIDKIFF

County LINCOLN District LAUREL HILL

Engineer Robert R. Howell

Engineer's Registration No. 2529

File No. 34-47 Drawing No. \_\_\_\_\_

Date DEC. 22, 1959 Scale 1" = 400'

STATE OF WEST VIRGINIA  
DEPARTMENT OF MINES  
OIL AND GAS DIVISION  
CHARLESTON

WELL LOCATION MAP

FILE NO. LIN-1275-A

+ Denotes location of well on United States Topographic Maps, scale 1 to 62,500, latitude and longitude lines being represented by border lines as shown.

- Denotes one inch spaces on border line of original tracing.

*U.F.G. Co (Min. Tr. 7) No. 2261 - U.F.G. Co. - LIN-1275-A*



1502

STATE OF WEST VIRGINIA  
DEPARTMENT OF MINES  
OIL AND GAS DIVISION

Quadrangle Midkiff *nc*

Permit No. -MFA

WELL RECORD

Oil or Gas Well Gas  
(KIND)

Company United Fuel Gas Company  
 Address P. O. Box 1273; Charleston 25, W. Va.  
 Farm United Fuel Gas Co. Min. Tr. #7 Acres 8,931.56  
 Location (waters) Six Mile Creek  
 Well No. 2261 Elev. 1040.30  
 District Laurel Hill County Lincoln  
 The surface of tract is owned in fee by \_\_\_\_\_  
 Address \_\_\_\_\_  
 Mineral rights are owned by United Fuel Gas Co.  
 Address Charleston, W. Va.  
 Drilling commenced Oct. 26, 1915  
 Drilling completed Nov. 30, 1915  
 Date Shot \_\_\_\_\_ From \_\_\_\_\_ To \_\_\_\_\_  
 With \_\_\_\_\_  
 Open Flow \_\_\_\_\_ /10ths Water in \_\_\_\_\_ Inch  
 \_\_\_\_\_ /10ths Merc. in \_\_\_\_\_ Inch  
 Volume \_\_\_\_\_ Cu. Ft.  
 Rock Pressure \_\_\_\_\_ lbs. \_\_\_\_\_ hrs.  
 Oil \_\_\_\_\_ bbls., 1st 24 hrs.  
 WELL ACIDIZED \_\_\_\_\_  
 WELL FRACTURED \_\_\_\_\_

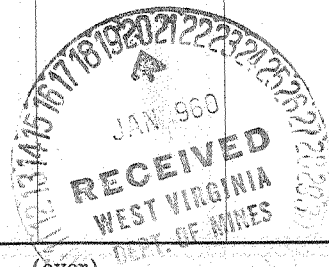
Casing and Tubing	Used in Drilling	Left in Well	Packers
Size			Kind of Packer
16			
13			
10		19'6"	Size of
8 1/2	190' Pulled		
6 5/8		1560'6"	Depth set
5 3/16			
3			Perf. top
2	1817	1817	Perf. bottom
Liners Used			Perf. top
			Perf. bottom

CASING CEMENTED 88 SIZE 24 No. Ft. \_\_\_\_\_ Date \_\_\_\_\_

COAL WAS ENCOUNTERED AT \_\_\_\_\_ FEET \_\_\_\_\_ INCHES  
 \_\_\_\_\_ FEET \_\_\_\_\_ INCHES \_\_\_\_\_ FEET \_\_\_\_\_ INCHES  
 \_\_\_\_\_ FEET \_\_\_\_\_ INCHES \_\_\_\_\_ FEET \_\_\_\_\_ INCHES

RESULT AFTER TREATMENT \_\_\_\_\_  
 ROCK PRESSURE AFTER TREATMENT \_\_\_\_\_  
 Fresh Water 90 Feet \_\_\_\_\_ Salt Water 940 Feet \_\_\_\_\_

Formation	Color	Hard or Soft	Top	Bottom	Oil, Gas or Water	Depth	Remarks
Native Coal			88	90	Fresh water	90'	
Sand			550	575	Little Salt Water	940'	
Sand			600	630	Hole full	970'	
Sand			685	730	Gas at	1690	
1st Salt Sand			805	1260	Hole reduced	1723	
2nd Salt Sand			1315	1330	Bottom Line	1743'	
Sand			1345	1400			
Little Lime			1522	1550			
Pencil Cave			1550	1554			
Big Lime			1554	1743			
Big Injun			1760	1795			
Total Depth			1819'				



(over) JAN 3 1961

Formation	Color	Hard or Soft	Top	Bottom	Oil, Gas or Water	Depth Found	Remarks

Date January 19, 19 60

APPROVED UNITED FUEL GAS COMPANY, Owner

By *S.R. Ferrell*  
(Title)  
Supt., Civil Engineering Dept.