

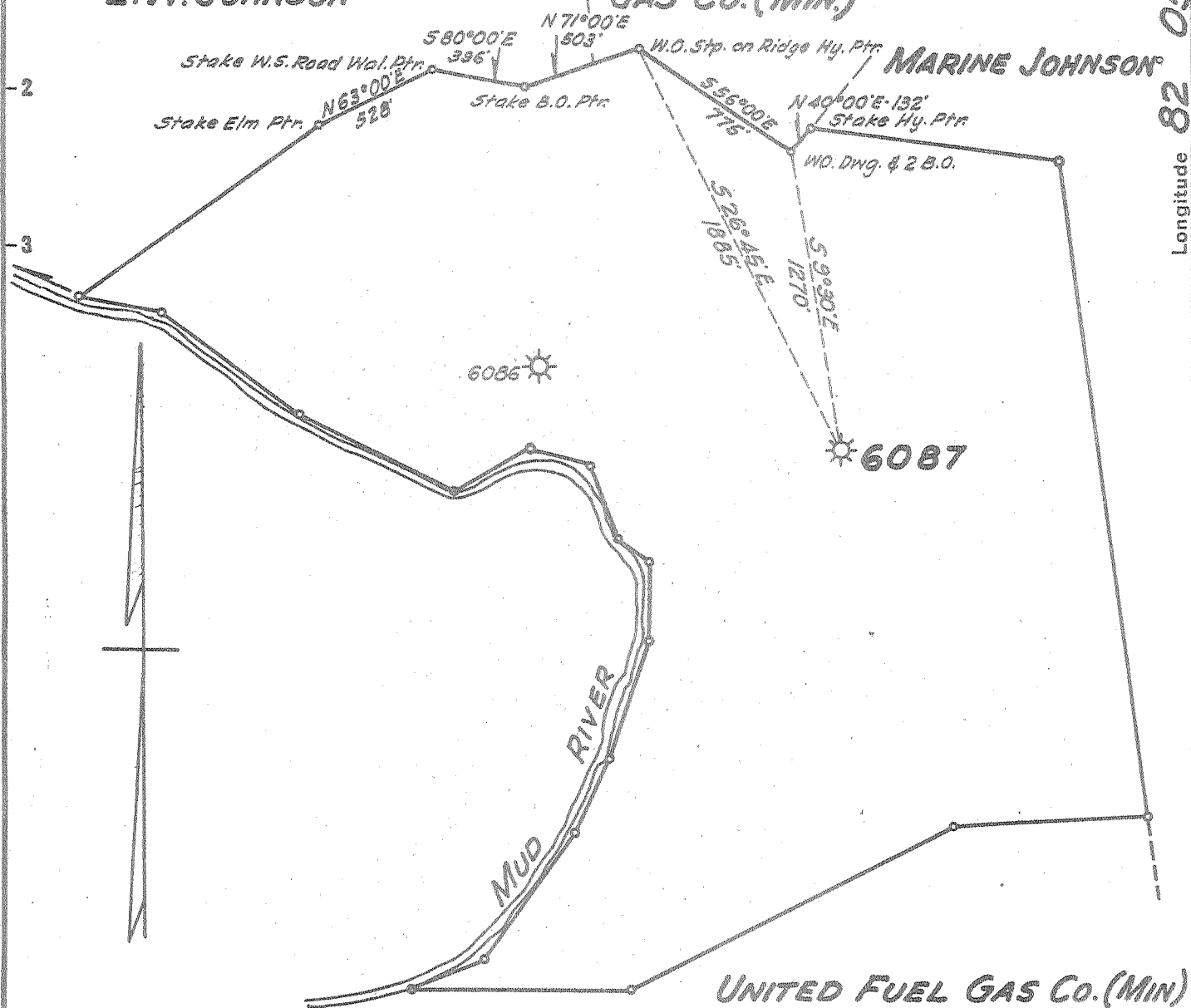
Latitude 38° 15'

Longitude 82° 05'

E. W. JOHNSON

UNITED FUEL GAS CO. (MIN.)

MARINE JOHNSON



6085

6087

MUD RIVER

UNITED FUEL GAS CO. (MIN.)

New Location...
 Drill Deeper.....
 Abandonment.....

FEB 28 1956

Company UNITED FUEL GAS CO.
 Address CHARLESTON, W. VA.
 Farm UNITED FUEL GAS CO. TR. 31
 Tract _____ Acres 1102.⁸⁵ Lease No. NO REF.
 Well (Farm) No. _____ Serial No. 6087
 Elevation (Spirit Level) 777.7
 Quadrangle MIDKIFF
 County LINCOLN District CARROLL
 Engineer Hans E. Joachim
 Engineer's Registration No. 669
 File No. 34-51 Drawing No. _____
 Date 2-1-56 Scale 1" = 660'

STATE OF WEST VIRGINIA
 DEPARTMENT OF MINES
 OIL AND GAS DIVISION
 CHARLESTON

WELL LOCATION MAP
 FILE NO. LIN-1217-A

+ Denotes location of well on United States Topographic Maps, scale 1 to 62,500, latitude and longitude lines being represented by border lines as shown.

- Denotes one inch spaces on border line of original tracing.

U.F.G. Co. (TR.31) No. 6087 - U. F. G. Co. - LIN-1217-A



STATE OF WEST VIRGINIA
DEPARTMENT OF MINES
OIL AND GAS DIVISION

1205

Quadrangle Midkiff

WELL RECORD

Permit No. 12774 Oil or Gas Well Gas
(KIND)

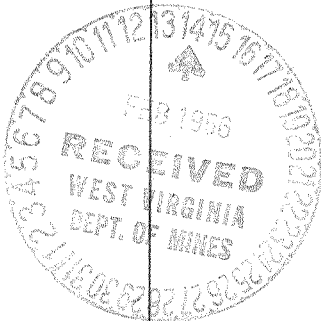
Company United Fuel Gas Company
Address P. O. Box 1273, Charleston 25, W. Va.
Farm U. F. G. Co. Min. Tr. #31 Acres 1102.35
Location (waters) Mud River
Well No. 6087 Elev. 777.7'
District Carroll County Lincoln
The surface of tract is owned in fee by _____
Address _____
Mineral rights are owned by United Fuel Gas Co.
Address Charleston, W. Va.

Casing and Tubing	Used in Drilling	Left in Well	Packers
Size			Kind of Packer
16			
13			
10		30'	Size of
8 1/4			
6 5/8		1330'	Depth set
5 3/16			
3			Perf. top
2		1527'	Perf. bottom
Liners Used			Perf. top
			Perf. bottom

Drilling commenced 11-17-21
Drilling completed 12-18-21
Date Shot Not shot From _____ To _____
With _____
Open Flow _____ /10ths Water in _____ Inch
20 /10ths Merc. in _____ Inch
Volume 786,720 Cu. Ft.
Rock Pressure 340 lbs. 20 hrs.
Oil _____ bbls., 1st 24 hrs.
Fresh water _____ feet _____ feet
Salt water _____ feet _____ feet

CASING CEMENTED _____ SIZE _____ No. Ft. _____ Date _____
COAL WAS ENCOUNTERED AT 165 FEET 36 INCHES
_____ FEET _____ INCHES FEET _____ INCHES
_____ FEET _____ INCHES FEET _____ INCHES

Formation	Color	Hard or Soft	Top	Bottom	Oil, Gas or Water	Depth Found	Remarks
Surface - Gravel				8			
Slate & Sand			8	16			
Sand			100	120			
Slate			120	140			
Sand			140	165			
Coal			165	168			
Sand			168	200			
Slate			200	220			
Sand			220	300			
Slate			300	330			
Sand			330	365			
White Sand			365	450			
Black Slate			450	500			
Slate			500	550			
Sand			550	600			
Black Slate			600	735			
Salt Sand			735	792			
Big Water			792	925			
Slate			925	975			
Sand			975	1000			
Slate			1000	1010			
Sand			1010	1170			
Slate			1170	1175			
Lime			1175	1195			
Slate			1195	1205			
Lime			1205	1230			
Slate			1230	1265			
Bl. Lime			1265	1275			
Slate			1275	1290			
Lime (Little)			1290	1320			
Pencil Cave			1320	1330			
Big Lime			1330	1508			
Red Rock			1508	1520			
Big Injun			1520				
Total depth			1527'				



JUNE 21 1958

Formation	Color	Hard or Soft	Top	Bottom	Oil, Gas or Water	Depth Found	Remarks

Date February 10, 19 56

APPROVED UNITED FUEL GAS COMPANY, Owner

By *S. R. Ferrell*
(Title)

Mgr. Civil Engineering Department