

Latitude 38° 20'

Longitude 82° 00'

U.F.G. CO.

PERRY WHITE

HAZEL DENT

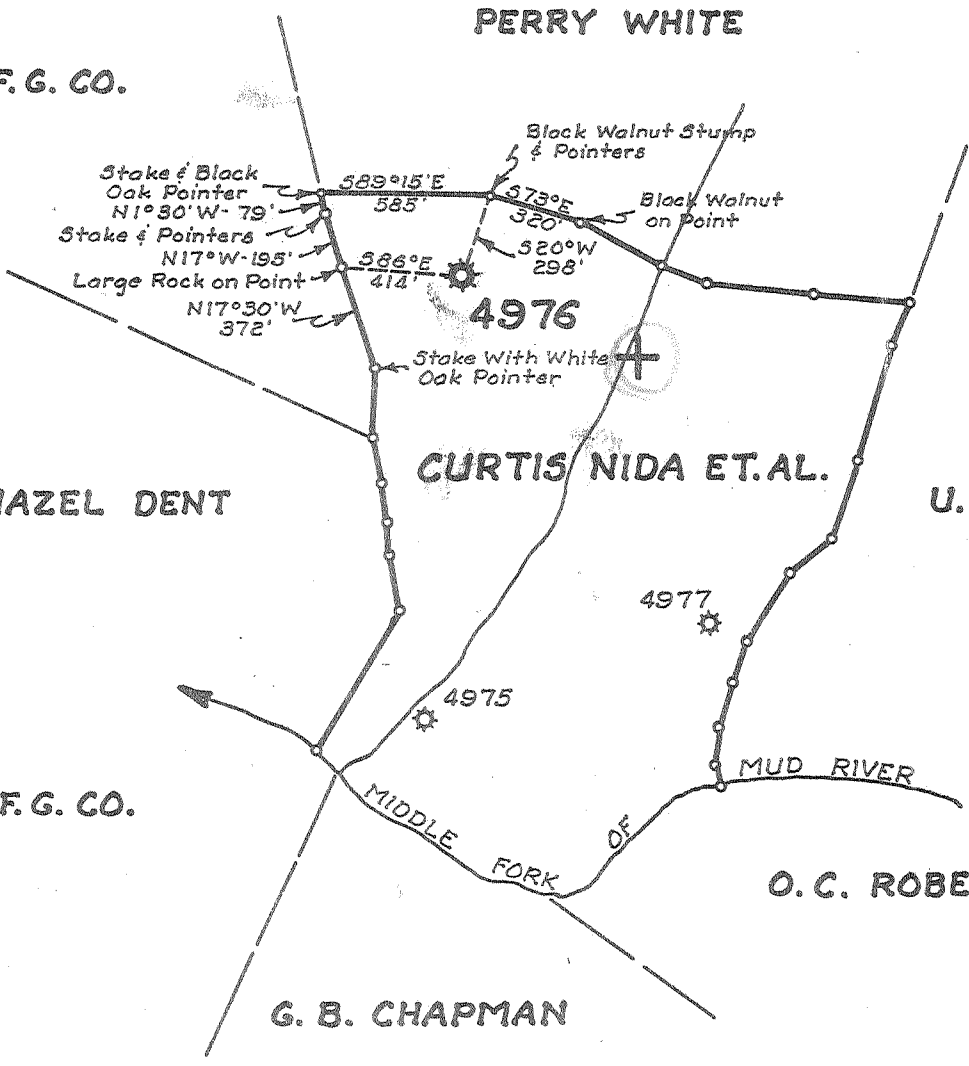
CURTIS NIDA ET.AL.

U.F.G. CO.

U.F.G. CO.

G. B. CHAPMAN

O. C. ROBERTS



- New Location..
- Drill Deeper.....
- Abandonment.....

SEP 27 1955

3.33 W  
4.11 A

Company UNITED FUEL GAS CO.  
 Address CHARLESTON, W. VA.  
 Farm CURTIS NIDA, ET.AL.  
 Tract \_\_\_\_\_ Acres 72 Lease No. 43410  
 Well (Farm) No. \_\_\_\_\_ Serial No. 4976  
 Elevation (Spirit Level) 831.0'  
 Quadrangle MILTON  
 County LINCOLN District CARROLL  
 Engineer Hubert R. Stull  
 Engineer's Registration No. 2529  
 File No. 38-53 Drawing No. \_\_\_\_\_  
 Date 8-31-55 Scale 1"=660'

STATE OF WEST VIRGINIA  
 DEPARTMENT OF MINES  
 OIL AND GAS DIVISION  
 CHARLESTON

WELL LOCATION MAP  
 FILE NO. LIN-1198-A

+ Denotes location of well on United States Topographic Maps, scale 1 to 62,500, latitude and longitude lines being represented by border lines as shown.

- Denotes one inch spaces on border line of original tracing.

CURTIS NIDA ET AL. No. 4976 - U.F.G. Co. - LIN-1198-A



STATE OF WEST VIRGINIA  
DEPARTMENT OF MINES  
OIL AND GAS DIVISION

1477

Quadrangle Milton  
Permit No. 1198-A

WELL RECORD

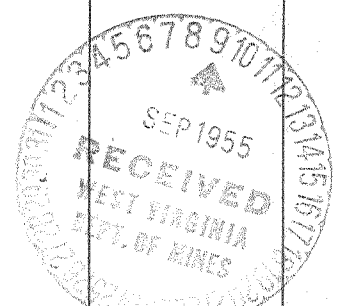
Oil or Gas Well Gas  
(KIND)

Company UNITED FUEL GAS CO.  
Address P.O. Box 1273, Charleston 25, W. Va.  
Farm Curtis Nida Acres 86  
Location (waters) Middle Fork  
Well No. 4976 Elev. 831'  
District Carroll County Lincoln  
The surface of tract is owned in fee by \_\_\_\_\_  
Address \_\_\_\_\_  
Mineral rights are owned by Anna White Williamson, et al  
Address Betsy Lane, Kentucky  
Drilling commenced 1-14-26  
Drilling completed \_\_\_\_\_  
Date Shot \_\_\_\_\_ From \_\_\_\_\_ To \_\_\_\_\_  
With \_\_\_\_\_  
Open Flow \_\_\_\_\_ /10ths Water in \_\_\_\_\_ Inch  
\_\_\_\_\_ /10ths Merc. in \_\_\_\_\_ Inch  
Volume 200,000 Cu. Ft.  
Rock Pressure \_\_\_\_\_ lbs. \_\_\_\_\_ hrs.  
Oil \_\_\_\_\_ bbls., 1st 24 hrs.  
Fresh water \_\_\_\_\_ feet \_\_\_\_\_ feet  
Salt water \_\_\_\_\_ feet \_\_\_\_\_ feet

Casing and Tubing	Used in Drilling	Left in Well	Packers
Size			Kind of Packer
16			
13			
10		12'	Size of
8 1/4			
6 5/8		1768'	Depth set
5 3/16			
3			Perf. top
2			Perf. bottom
Liners Used			Perf. top
			Perf. bottom

CASING CEMENTED \_\_\_\_\_ SIZE \_\_\_\_\_ No. Ft. \_\_\_\_\_ Date \_\_\_\_\_  
COAL WAS ENCOUNTERED AT \_\_\_\_\_ FEET \_\_\_\_\_ INCHES  
\_\_\_\_\_ FEET \_\_\_\_\_ INCHES FEET \_\_\_\_\_ INCHES  
\_\_\_\_\_ FEET \_\_\_\_\_ INCHES FEET \_\_\_\_\_ INCHES

Formation	Color	Hard or Soft	Top	Bottom	Oil, Gas or Water	Depth Found	Remarks
Surface			0	12			
Slate			12	40			
Sand			40	80			
Red Mud			80	100			
Slate			100	185			
Sand			185	200			
Slate			200	300			
Sand			300	350			
Slate			350	360			
Sand			360	440			
Slate			440	460			
Sand			460	600			
Slate			600	650			
Sand			650	750			
Slate			750	930			
Gas Sand			930	970			
Slate			970	976			
Salt Sand			976	1105			
Slate			1105	1145			
Sand			1145	1330			
Slate			1130	1345			
Sand			1343	1460			
Little Lime			1460	1480			
Pencil Cave			1480	1489			
Big Lime			1489	1689			
Red Rock			1689	1694			
Slate			1694	1700			
Big Injun			1700	1725			
Slate			1725	1735			
Sand			1735	1750			
Slate			1750	1930			
Slate & Shells			1930	2005			
Slate			2005				
Berea			2090 1/2	2111 1/2			
Total depth			2111 1/2				



JAN. 23 1956

