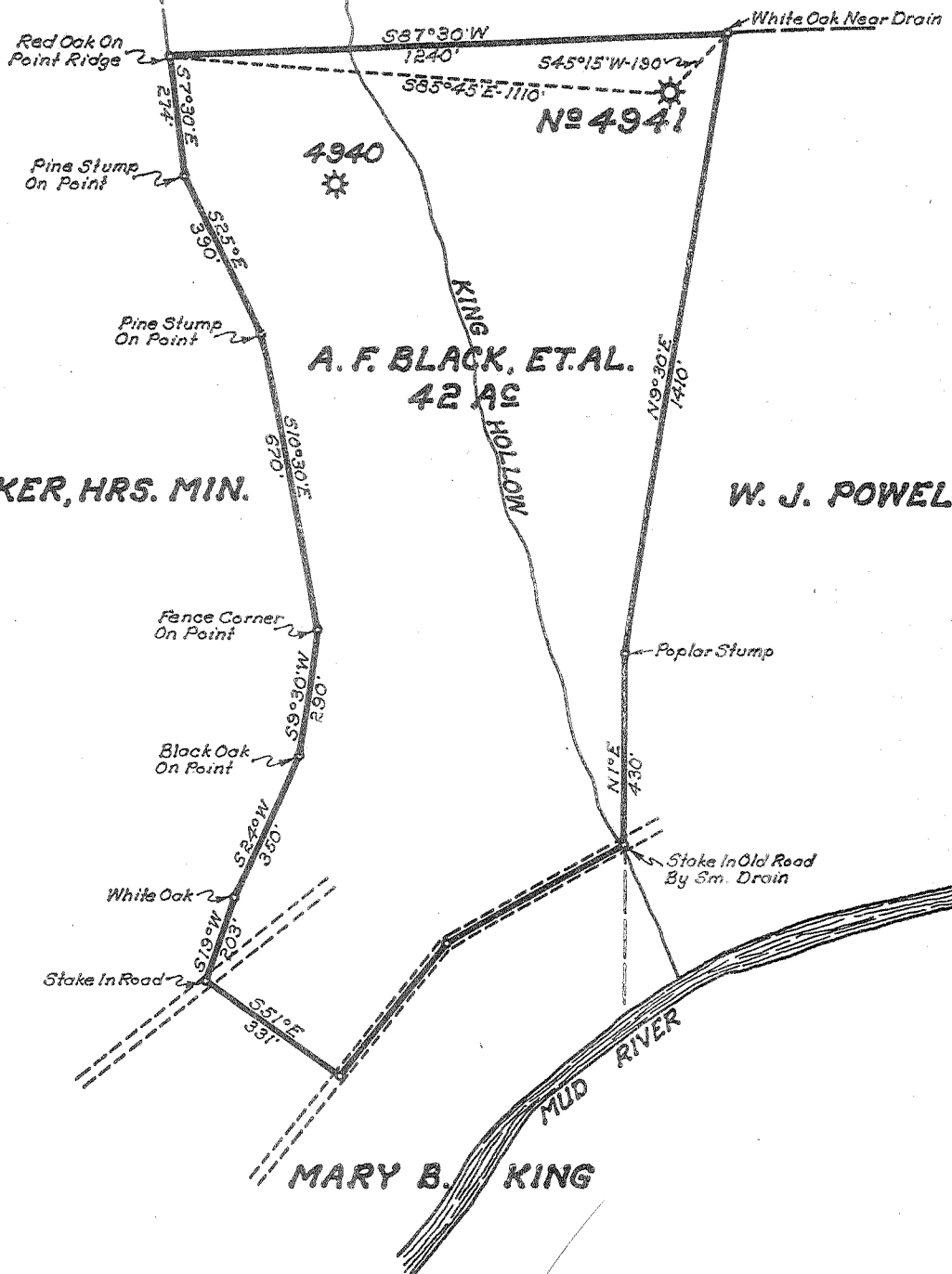


Latitude 38° 20'

Longitude 82° 05'



W. W. BAKER, HRS. MIN.

A. F. BLACK, ET.AL.
42 AC

W. J. POWELL

MARY B. KING

- New Location...
- Drill Deeper.....
- Abandonment.....

JUL 5 1955

0.42 W
3.23 8

Company	UNITED FUEL GAS CO.
Address	CHARLESTON, W. VA.
Farm	A. F. BLACK, ET.AL.
Tract	Acres 42 Lease No. 43383
Well (Farm) No.	Serial No. 4941
Elevation (Spirit Level)	843.0
Quadrangle	MILTON
County	LINCOLN District CARROLL
Engineer	Seibert R. Russell
Engineer's Registration No.	2529
File No.	36-55 Drawing No.
Date	5-17-55 Scale 1"=400'

STATE OF WEST VIRGINIA
DEPARTMENT OF MINES
OIL AND GAS DIVISION
CHARLESTON

WELL LOCATION MAP
FILE NO. LIN-1188-B

+ Denotes location of well on United States Topographic Maps, scale 1 to 62,500, latitude and longitude lines being represented by border lines as shown.

- Denotes one inch spaces on border line of original tracing.



STATE OF WEST VIRGINIA
DEPARTMENT OF MINES
OIL AND GAS DIVISION

1256
1096
1470
1010
1034

WELL RECORD

Quadrangle Milton

Permit No. 1188-A

Oil or Gas Well Gas
(KIND)

Company UNITED FUEL GAS CO.
Address P.O. Box 1273, Charleston 25, W. Va.
Farm A. F. Black, et al Acres 42
Location (waters) Mud River
Well No. 4941 Elev. 843'
District Carroll County Lincoln
The surface of tract is owned in fee by _____

Casing and Tubing	Used in Drilling	Left in Well	Packers
Size			
16			Kind of Packer _____
13			
10		22'	Size of _____
8 1/4			
6 5/8		1696'	Depth set _____
5 3/16			
3			Perf. top _____
2		2202'	Perf. bottom _____
Liners Used			Perf. top _____
			Perf. bottom _____

Mineral rights are owned by Sweetland Land & Min. Co.
1012 1st Huntington Nat'l Bank Bldg.
Address Huntington, W. Va.

Drilling commenced 10-9-24
Drilling completed 11-12-24
Date Shot 11-12-24 From _____ To _____
With 60 qts.

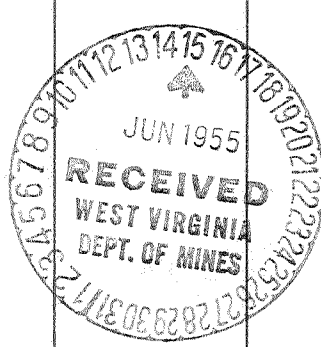
Open Flow 28 /10ths Water in 2 Inch
_____ /10ths Merc. in _____ Inch
Volume 250,000 Cu. Ft.

Rock Pressure _____ lbs. _____ hrs.
Oil _____ bbls., 1st 24 hrs.
Fresh water _____ feet _____ feet
Salt water _____ feet _____ feet

CASING CEMENTED _____ SIZE _____ No. Ft. _____ Date _____

COAL WAS ENCOUNTERED AT _____ FEET _____ INCHES
_____ FEET _____ INCHES FEET _____ INCHES
_____ FEET _____ INCHES FEET _____ INCHES

Formation	Color	Hard or Soft	Top	Bottom	Oil, Gas or Water	Depth Found	Remarks
Surface			0	25			
Fire Clay			25	250			
Sand			250	325			
Fresh Water			325	330			
Sand			330	440			
Slate			440	450			
Sand			450	600			
Slate & Shells			600	900			
Gas Sand			900	915			
Slate & Shells			915	970			
Salt Sand			970	1270			
Red Rock			1270	1276			
Salt Sand #2			1276	1421			
Maxon Sand			1421	1436			
Little Line			1436	1444			
Pencil Cave			1444	1450			
Big Line			1450	1635			
Shells			1635	1650			
Slate			1650	1660			
Big Injun			1660	1695			
Slate			1695	1760			
Slate & Shells			1760	1875			
Big Shell			1875	2000			
Slate			2000	2153			
Brown Shale			2153	2161			
Berea Sand			2161	2182			
Total depth			2202'				



(Over)

JAN 23 1956

