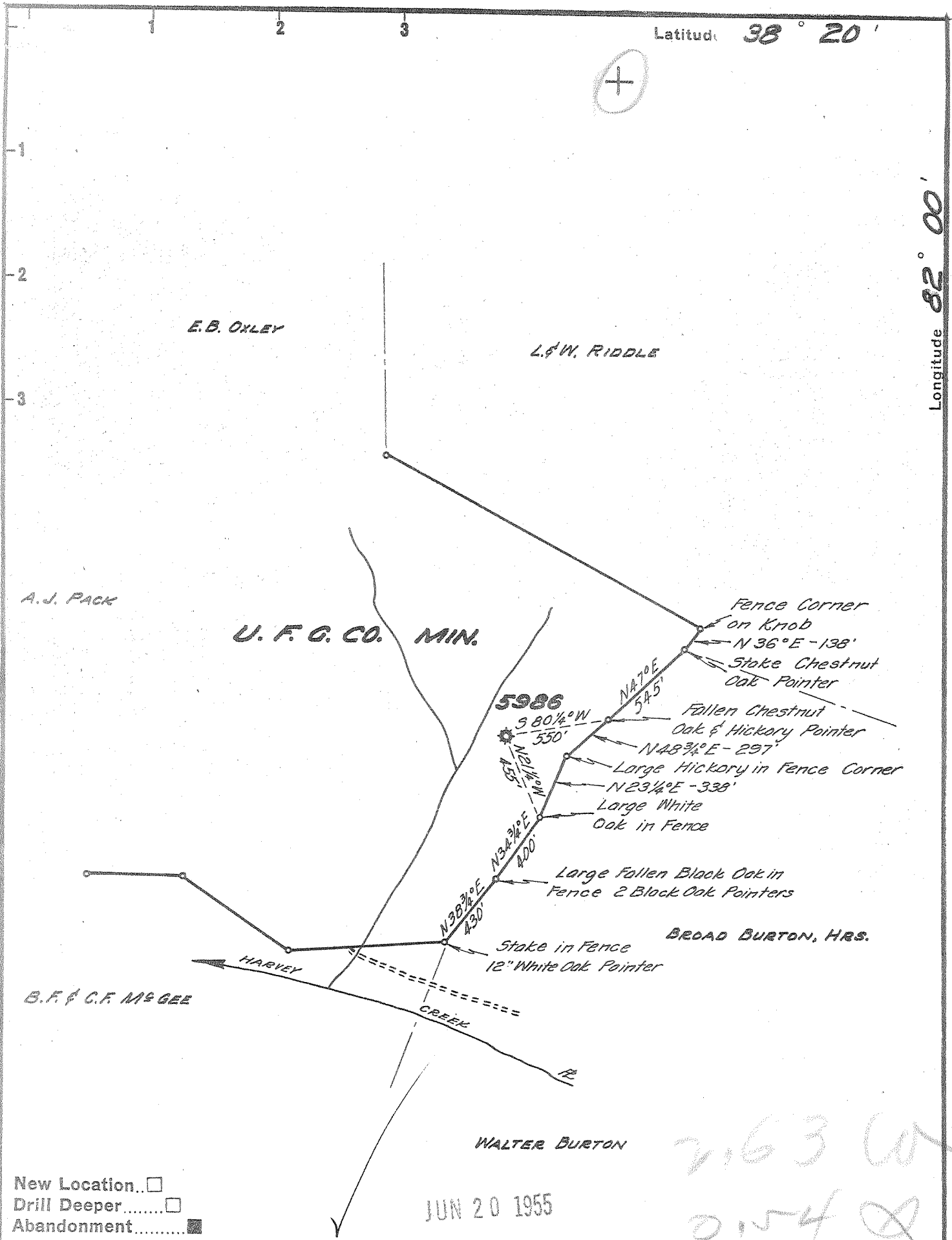


Latitude 38° 20'

Longitude 82° 00'



New Location
 Drill Deeper
 Abandonment

JUN 20 1955

2,630
 0,540

Company	UNITED FUEL GAS CO.
Address	CHARLESTON, W. VA.
Farm	UNITED FUEL GAS CO. MIN.
Tract	9 Acres 3,223.28 Lease No. No RES
Well (Farm) No.	Serial No. 5986
Elevation (Spirit Level)	838.0
Quadrangle	MILTON
County	LINCOLN District CARROLL
Engineer	Lynch R. Howell
Engineer's Registration No.	2529
File No.	38-57 Drawing No.
Date	5-31-55 Scale 1"=660'

STATE OF WEST VIRGINIA
 DEPARTMENT OF MINES
 OIL AND GAS DIVISION
 CHARLESTON

WELL LOCATION MAP
 FILE NO. LIN-1160-A

+ Denotes location of well on United States Topographic Maps, scale 1 to 62,500, latitude and longitude lines being represented by border lines as shown.
 - Denotes one inch spaces on border line of original tracing.



STATE OF WEST VIRGINIA
DEPARTMENT OF MINES
OIL AND GAS DIVISION

1441

Quadrangle Milton

WELL RECORD

Permit No. 1160-A

Oil or Gas Well Gas
(KIND)

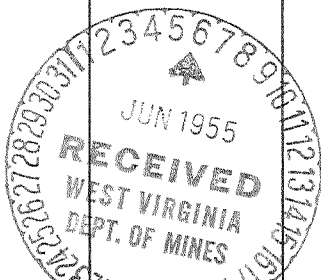
Company UNITED FUEL GAS COMPANY
Address P.O. Box 1273, Charleston 25, W. Va.
Farm U.F.G.Co. Min. Tr. #9 Acres 3,223.28
Location (waters) Harvey Creek
Well No. 5986 Elev. 838'
District Carroll County Lincoln
The surface of tract is owned in fee by _____
Address _____
Mineral rights are owned by United Fuel Gas Co.
Address Charleston, W.Va.
Drilling commenced 10-12-16
Drilling completed 11-25-16
Date Shot _____ From _____ To _____
With _____
Open Flow _____ /10ths Water in _____ Inch
_____ /10ths Merc. in _____ Inch
Volume 700,000 Cu. Ft.
Rock Pressure 560 lbs. _____ hrs.
Oil _____ bbls., 1st 24 hrs.
Fresh water 1690 feet _____ feet
Salt water _____ feet _____ feet

Casing and Tubing	Used in Drilling	Left in Well	Packers
Size			Kind of Packer
16			
13			
10		20'	Size of
8 1/2		263'	
6 5/8			Depth set
5 3/16		1747'	
3		200'	Perf. top
2		2024'	Perf. bottom
Liners Used			Perf. top
			Perf. bottom

CASING CEMENTED _____ SIZE _____ No. Ft. _____ Date _____

COAL WAS ENCOUNTERED AT _____ FEET _____ INCHES
_____ FEET _____ INCHES _____ FEET _____ INCHES
_____ FEET _____ INCHES _____ FEET _____ INCHES

Formation	Color	Hard or Soft	Top	Bottom	Oil, Gas or Water	Depth Found	Remarks
Sand			100	260	Gas from Berea		
Slate			260	360			
Sand			360	530			
Slate			530	565			
Sand			565	690			
Slate			690	790			
Gas Sand			790	840			
Lime Shells			840	950	Gas at 965'		
Salt Sand			950	1365	Oil at 980'		
Slate			1365	1375	Hole full of water		
Maxon Sand			1375	1430			
Little Lime			1430	1445	1/2 million ft. gas		
Pencil Cave			1445	1452			
Big Lime			1452	1642			
Keener Sand			1642	1662			
Slate			1662	1682			
Big Injun Sand			1682	1732	Water at 1690'		
Slate			1732	1747			
Slate			1747	1780			
Squaw Sand			1780	1980			
Slate			1980	2172			
Berea Sand			2172	2194	Gas		
Total depth			2224'				



AUG 12 1955

