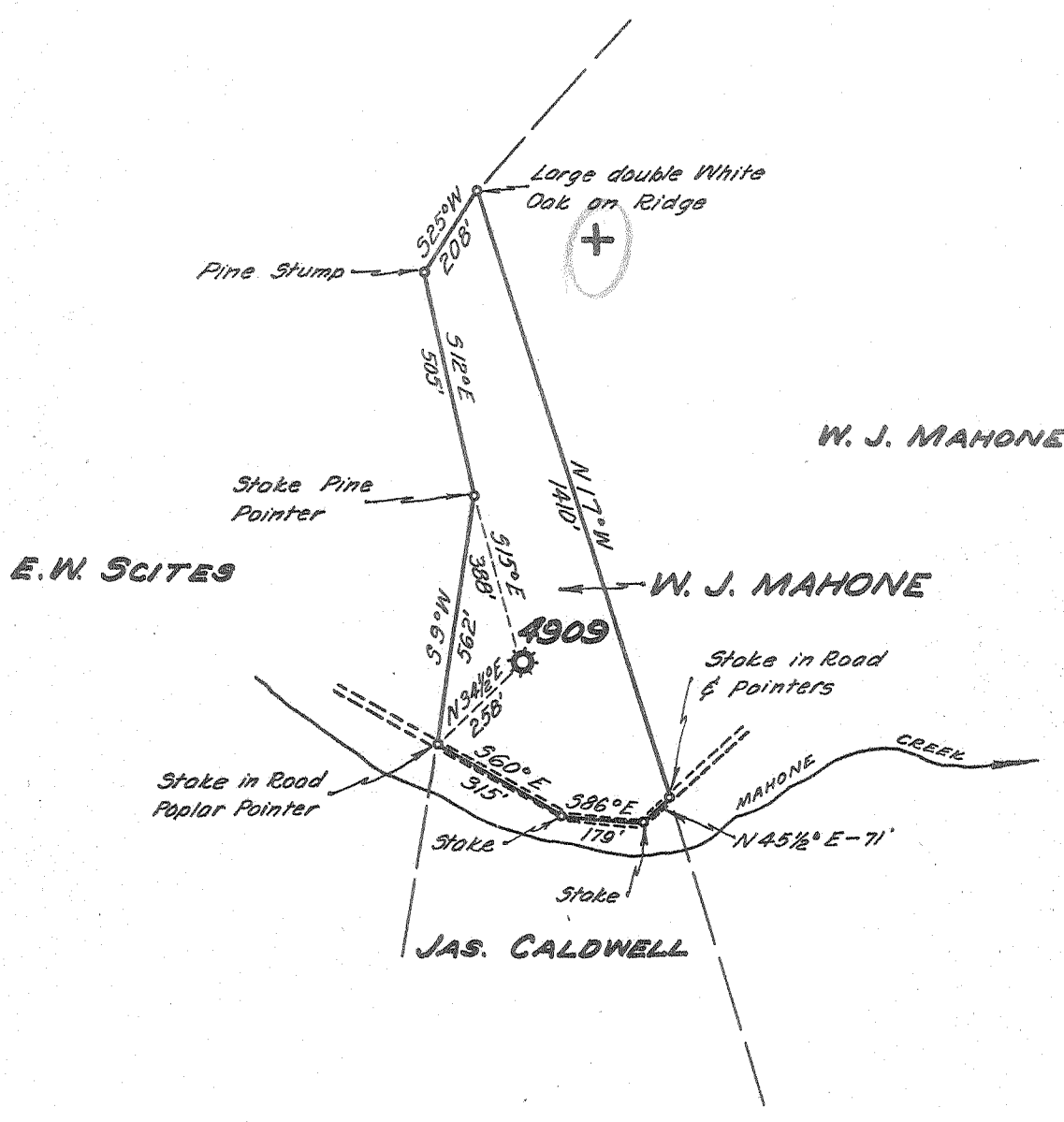


Latitude 38° 20'

Longitude 82° 05'



New Location   
 Drill Deeper   
 Abandonment

MAY 9 1955

3.5 W  
 3.47 R

Company UNITED FUEL GAS CO.  
 Address CHARLESTON, W. VA.  
 Farm W. J. MAHONE  
 Tract \_\_\_\_\_ Acres 15 Lease No. 43359  
 Well (Farm) No. \_\_\_\_\_ Serial No. 4909  
 Elevation (Spirit Level) 815.2  
 Quadrangle MILTON  
 County LINCOLN District CARROLL  
 Engineer Joseph R. Sherrill  
 Engineer's Registration No. 2529  
 File No. 34 - 53 Drawing No. \_\_\_\_\_  
 Date 4-20-55 Scale 1"=400'

STATE OF WEST VIRGINIA  
 DEPARTMENT OF MINES  
 OIL AND GAS DIVISION  
 CHARLESTON

**WELL LOCATION MAP**  
 FILE NO. LIN-1142-A

+ Denotes location of well on United States Topographic Maps, scale 1 to 62,500, latitude and longitude lines being represented by border lines as shown.

- Denotes one inch spaces on border line of original tracing.



STATE OF WEST VIRGINIA  
DEPARTMENT OF MINES  
OIL AND GAS DIVISION

1478

Quadrangle Milton

Permit No. \_\_\_\_\_

WELL RECORD

Oil or Gas Well Gas  
(KIND)

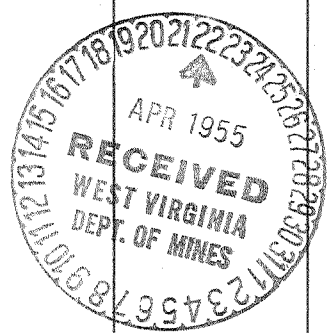
Company UNITED FUEL GAS CO.  
Address P.O. Box 1273, Charleston 25, W. Va.  
Farm W. J. Mahone Acres 15  
Location (waters) Mahone Creek  
Well No. 4909 Elev. 815.2'  
District Carroll County Lincoln  
The surface of tract is owned in fee by \_\_\_\_\_  
Address \_\_\_\_\_  
Mineral rights are owned by W. J. Mahone  
416 - 8th Ave. Address Huntington, W.Va.  
Drilling commenced 6-16-24  
Drilling completed 7-24-24  
Date Shot \_\_\_\_\_ From \_\_\_\_\_ To \_\_\_\_\_  
With \_\_\_\_\_  
Open Flow 20 /10ths Water in \_\_\_\_\_ 2 Inch  
\_\_\_\_\_/10ths Merc. in \_\_\_\_\_ Inch  
Volume 189,000 Cu. Ft.  
Rock Pressure 470 lbs. 48 hrs.  
Oil \_\_\_\_\_ bbls., 1st 24 hrs.  
Fresh water \_\_\_\_\_ feet \_\_\_\_\_ feet  
Salt water \_\_\_\_\_ feet \_\_\_\_\_ feet

Casing and Tubing	Used in Drilling	Left in Well	Packers
Size			Kind of Packer
16			
13			
10		17'10"	Size of
8 1/4			
6 5/8		1686'	Depth set
5 3/16			1959'
3			Perf. top
2		2147'	Perf. bottom
Liners Used			Perf. top
			Perf. bottom

CASING CEMENTED \_\_\_\_\_ SIZE \_\_\_\_\_ No. Ft. \_\_\_\_\_ Date \_\_\_\_\_

COAL WAS ENCOUNTERED AT \_\_\_\_\_ FEET \_\_\_\_\_ INCHES  
\_\_\_\_\_ FEET \_\_\_\_\_ INCHES \_\_\_\_\_ FEET \_\_\_\_\_ INCHES  
\_\_\_\_\_ FEET \_\_\_\_\_ INCHES \_\_\_\_\_ FEET \_\_\_\_\_ INCHES

Formation	Color	Hard or Soft	Top	Bottom	Oil, Gas or Water	Depth Found	Remarks
Surface			0	17			
Sand			17	24			
Slate			24	72			
Sand			72	89			
Slate			89	143			
Sand			143	156			
Slate			156	200			
Broken Sand			200	225			
Sand			225	400			
Slate			400	445			
Sand			445	500			
Slate			500	529			
Sand			529	578			
Slate & Shells			578	678			
Sand			678	704			
Slate & Shells			704	860			
Gas Sand			860	869			
Black Slate			869	875			
Salt Sand			875	1000			
Slate Brake			1000	1012			
Salt Sand			1012	1250			
Slate & Shells			1250	1297			
Red Rock			1297	1305			
Slate & Shells			1305	1335			
Little Lime			1335	1359			
Pencil Cave			1359	1364			
Big Lime			1364	1544			
Keener Sand			1544	1569			
Slate			1569	1590			
Injun Sand			1590	1650			
Squaw Sand			1650	1670			
Slate & Shells			1670	1940			
Hard Shell			1940	1965			
Slate & Shells			1965	2094			
Brown Shale			2094	2109			
Berea Sand			2109	2127			
Pocket			2127	2146			
Total depth			2146'				



OCT 6 1955

