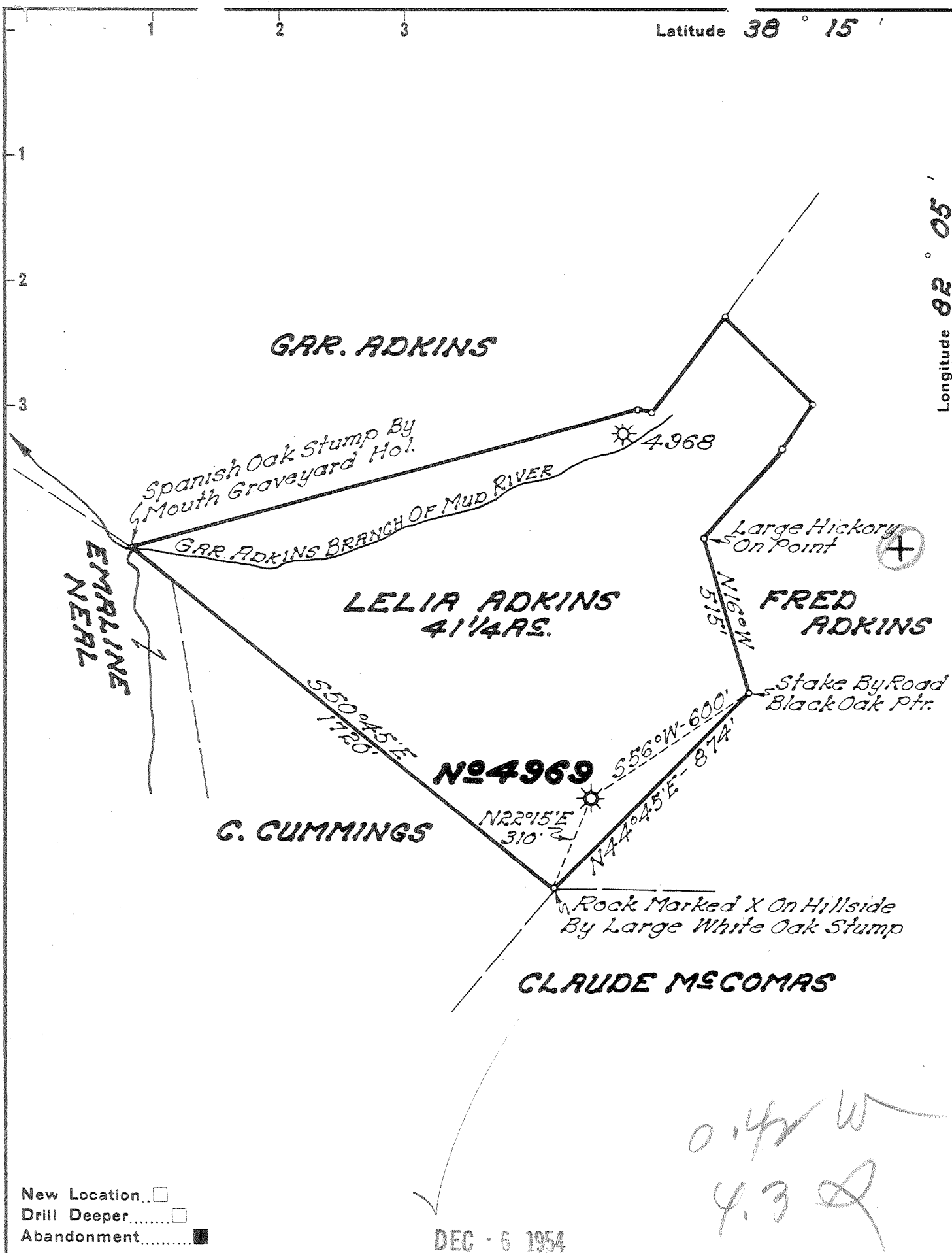


Latitude 38° 15'

Longitude 82° 05'



New Location
 Drill Deeper
 Abandonment

DEC - 6 1954

Company **UNITED FUEL GAS CO.**
 Address **CHARLESTON, W. VA.**
 Farm **LELIA ADKINS**
 Tract _____ Acres **4 1/4** Lease No. **43405**
 Well (Farm) No. **2** Serial No. **4969**
 Elevation (Spirit Level) **1005.0**
 Quadrangle **MIDKIFF**
 County **LINCOLN** District **UNION**
 Engineer **Robert R. Russell**
 Engineer's Registration No. **2529**
 File No. **36-47** Drawing No. _____
 Date **11-10-54** Scale **1"=400'**

STATE OF WEST VIRGINIA
 DEPARTMENT OF MINES
 OIL AND GAS DIVISION
 CHARLESTON

WELL LOCATION MAP
 FILE NO. **LIN-1127-A**

+ Denotes location of well on United States Topographic Maps, scale 1 to 62,500, latitude and longitude lines being represented by border lines as shown.
 - Denotes one inch spaces on border line of original tracing.



STATE OF WEST VIRGINIA
DEPARTMENT OF MINES
OIL AND GAS DIVISION

1316

Quadrangle Midkiff

WELL RECORD

Permit No. 1127-A

Oil or Gas Well Gas
(KIND)

Company UNITED FUEL GAS CO.
Address P.O. Box 1273, Charleston 25, W. Va.
Farm Lelia Adkins Acres 41-1/4
Location (waters) Mud River
Well No. 4969 Elev. 1005'
District Union County Lincoln
The surface of tract is owned in fee by _____
Address _____
Mineral rights are owned by Lincoln National Bank
Lelia Adkins Loan Address Hamlin, W. Va.
Drilling commenced 2-27-24
Drilling completed 3-22-24
Date Shot 3-18-24 From _____ To _____
With 30 qts.
Open Flow _____ /10ths Water in _____ Inch
_____ /10ths Merc. in _____ Inch
Volume _____ Cu. Ft.
Rock Pressure _____ lbs. _____ hrs.
Oil _____ bbls., 1st 24 hrs.
Fresh water _____ feet _____ feet
Salt water _____ feet _____ feet

Casing and Tubing	Used in Drilling	Left in Well	Packers
Size			Kind of Packer
16			
18			
10		18'	Size of
8 1/2			
6 5/8		1417'	Depth set
5 3/16			
3			Perf. top
2		2124'	Perf. bottom
Liners Used			Perf. top
			Perf. bottom

CASING CEMENTED _____ SIZE _____ No. Ft. _____ Date _____

COAL WAS ENCOUNTERED AT _____ FEET _____ INCHES
_____ FEET _____ INCHES _____ FEET _____ INCHES
_____ FEET _____ INCHES _____ FEET _____ INCHES

Formation	Color	Hard or Soft	Top	Bottom	Oil, Gas or Water	Depth Found	Remarks
Surface Gravel			1	3			
Rock			3	7			
Gravel & Water			7	8			
Slate & Little Gas			284	300			
Slate			360	400			
Sand			400	480			
Slate			480	490			
Sand			490	575			
Slate			575	590			
Sand			590	640			
Slate			640	645			
Sand			645	680			
Slate			680	690			
Sand			690	715			
Slate			715	720			
Salt Sand			720	970			
Slate			970	1010			
Sand			1010	1180			
Slate			1180	1200			
Lime			1200	1210			
Slate			1210	1220			
Sand			1220	1260			
Slate			1260	1280			
Lime			1280	1290			
Red Rock			1290	1300			
Slate & Lime			1300	1320			
Red Rock			1320	1330			
Slate			1330	1345			
Maxon Sand			1345	1370			
Slate			1370	1377			
Little Lime			1377	1407			
Pencil Cave			1407	1412			
Big Lime			1412	1440			
Oil pay			1440	1443			
Lime			1443	1584			
Big Lime			1604	1609			
Berea Sand			2104-6"	2119-6"			
Total depth			2124-6"				



APR 22 1955

Formation	Color	Hard or Soft	Top	Bottom	Oil, Gas or Water	Depth Found	Remarks
Drilled Deeper - 4-25-38 - completed 5-16-38					Packer OWS 6-5/8"x2" 16" Rubber 5' 11" Long Bottom Set combination 2350'		
Blue Shell			2336	2376			
Slate & Shells			2376	2470			
Blue Slate			2470	2535	Shot 5-17-38 from 3178-3661 with 3050# Dupont Gelatin		
Slate & Shells			2535	3314			
Brown Shale			3314	3327			
Blue Slate			3327	3355			
Brown Shale			3355	3430	Final open flow 100,000 cu. ft. R.P. 370# 15 Hrs.		
Gray Shale			3430	3455			
Brown Shale			3455	3496			
Gray Shale			3496	3522			
Brown Shale			3522	3639			
Blue Slate			3639	3661			
Total depth			3661'				

Date November 22, 1954

APPROVED UNITED FUEL GAS COMPANY, Owner

By S. R. Farrell
(Title)
Mgr. Civil Engr. Dept.