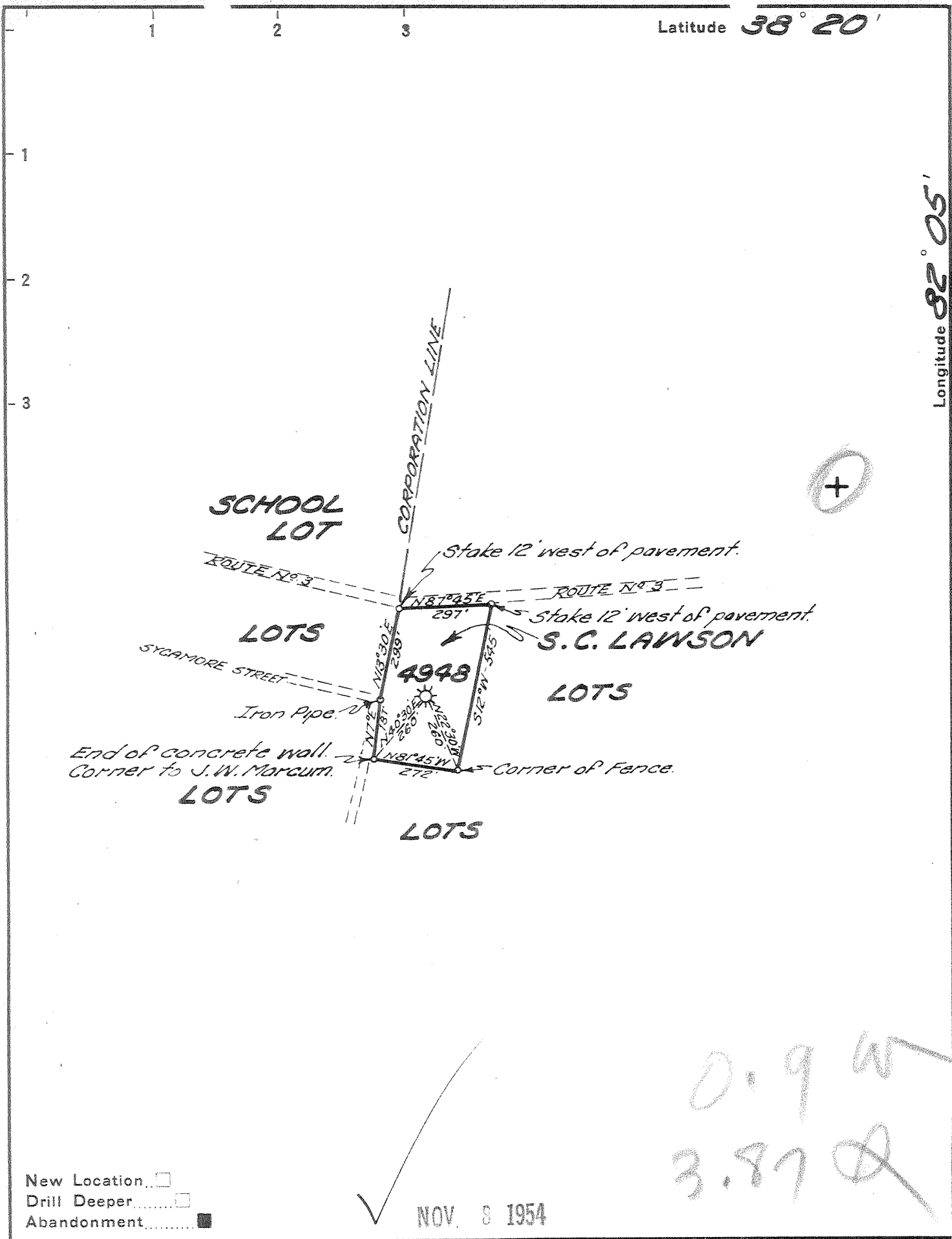


Latitude 38° 20'

Longitude 82° 05'



New Location
 Drill Deeper
 Abandonment

✓ NOV 8 1954

0.9 W
 3.87

Company UNITED FUEL GAS CO.
 Address CHARLESTON, W. VA.
 Farm S. C. LAWSON
 Tract _____ Acres 4 Lease No. 43390
 Well (Farm) No. _____ Serial No. 4948
 Elevation (Spirit Level) 678.7
 Quadrangle MILTON
 County LINCOLN District CARROLL
 Engineer Seibert R. Howell
 Engineer's Registration No. 2529
 File No. 36-53 Drawing No. _____
 Date 10-22-54 Scale 1" = 400'

STATE OF WEST VIRGINIA
 DEPARTMENT OF MINES
 OIL AND GAS DIVISION
 CHARLESTON

WELL LOCATION MAP
 FILE NO. LIN-1119-A

+ Denotes location of well on United States Topographic Maps, scale 1 to 62,500, latitude and longitude lines being represented by border lines as shown.

- Denotes one inch spaces on border line of original tracing.

S.C. LAWSON No. 4948 — U.F.G. Co. — LIN-1119-A