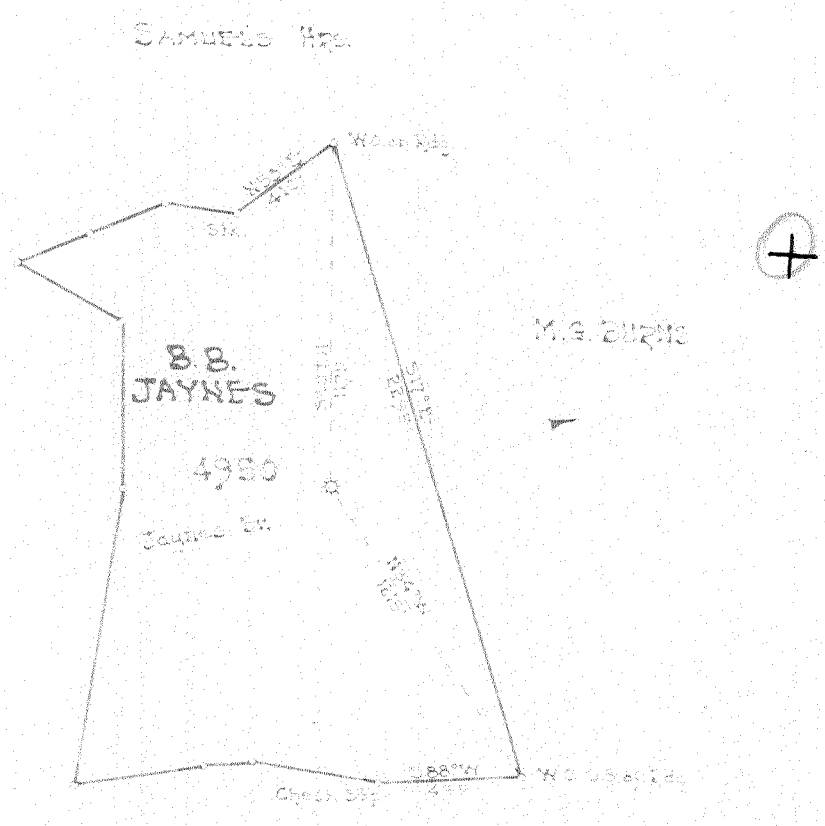


Latitude 38 20  
 Longitude 82 05



*1.02 W  
 5.03 R*

New Location   
 Drill Deeper   
 Abandonment

FEB 11 1953

Company	UNITED FUEL GAS CO.
Address	CHARLESTON, W.VA.
Farm	B.B. JAYNES
Tract	Acres 51 Lease No. 43392
Well (Farm) No.	Serial No. 4950
Elevation (Spot Level)	748.8 AD
Quadrangle	MILTON
County	LINCOLN District CARROLL
Engineer	
Engineer's Registration No.	662
File No.	36-53 Drawing No.
Date	12-13-50 Scale 1"=660'

STATE OF WEST VIRGINIA  
 DEPARTMENT OF MINES  
 OIL AND GAS DIVISION  
 CHARLESTON

WELL LOCATION MAP  
 FILE NO. LIN-987-A

+ Denotes location of well on United States Topographic Maps, scale 1 to 62,500, latitude and longitude lines being represented by border lines as shown.  
 - Denotes one inch spaces on border line of original tracing.

B. B. JAYNES NO. 4950 WELL.

987A

Carroll District, Lincoln County, W. Va.  
 By United Fuel Gas Co., Box 1273, Charleston, 25, W. Va.  
 Abandoned under permit Lin-.....-A?  
 On 51 acres, on Jaynes Branch.  
 Elevation, 748' B.  
 Minerals owned by B. B. Jaynes, Hamlin, W. Va.  
 Drilling commenced June 7, 1923; date of completion, not given.  
 Date shot, not given; shot with 300 qts.  
 Volume, 465,000 cu. ft.  
 Rock pressure, not given.  
 10" casing, 11'; 8", 85'; 6 $\frac{5}{8}$ ", 1307' 5"; 5 $\frac{3}{16}$ ", 372' 4"; all left in.  
 This well was purchased by United Fuel Gas Co. June 30, 1940, from  
 Kanawha Gas & Util. Co.  
 Oil show 120' in Big Lime. Gas show, 149' in Big Lime.  
 Production before shot, 10/10 W. in 2" opg. Production after shot,  
 23/10 W. in 2" opg.  
 Hole reduced at 1679' 9".  
 5-foot perforated pipe on joint of tubing. 16' 5" of pine log in bottom.  
 Packer set at 1861' 5".  
 Gas, 2099-2108', 12/10 W. in 2" (when drilled in).  
 Gas well. Record to Dept. of Mines dated Dec. 18, 1950.  
 Record to RCT from Mrs. Griffith July 9, 1952. O. F. No. 1319.

	Top.	Bottom.
Surface	0	11
Sand	11	65
Slate	65	90
Sand	90	250
Slate	250	300
Sand	300	530
Slate	530	830
Salt Sand	830	995
Slate	995	1035
2nd Salt Sand	1035	1228
Slate	1228	1258
Maxton Sand	1258	1369
Little Lime	1369	1398
Pencil Cave	1398	1409
Big Lime	1409	1591
Red rock	1591	1603
Big Injun Sand	1603	1640
Slate	1640	1646
Squaw Sand	1646	1655
Slate	1655	1825
Shells	1825	1920
Slate	2087	2097
Berea Sand	2097	2118
Total depth		2118



STATE OF WEST VIRGINIA  
DEPARTMENT OF MINES  
OIL AND GAS DIVISION

1319

WELL RECORD

Permit No. LN-987-A

ABANDONMENT

Oil or Gas Well Gas  
(KIND)

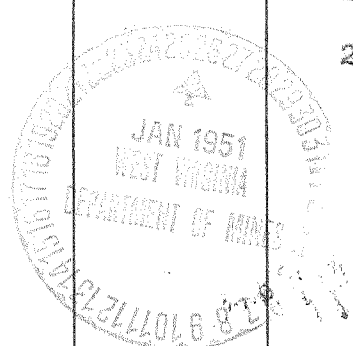
Company United Fuel Gas Co.  
Address P. O. Box 1273, Charleston 25, W. Va.  
Farm B. B. Jaynes Acres 51  
Location (waters) Jaynes BR  
Well No. 4950 Elev. 748 Bar.  
District Carroll County Lincoln  
The surface of tract is owned in fee by \_\_\_\_\_  
Address \_\_\_\_\_  
Mineral rights are owned by B. B. Jaynes  
Hamlin, Address West Virginia  
Drilling commenced 6-7-23  
Drilling completed Not Given  
Date Shot Not Given From \_\_\_\_\_ To \_\_\_\_\_  
With 300 Qts.

Casing and Tubing	Used in Drilling	Left in Well	Packers
Size			Kind of Packer
16			
18			
10	11'	11'	Size of
8"	85'	85'	
6 5/8"	1307'-5"	1307'-5"	Depth set
5 3/16"	372'-4"	372'-4"	
3			Perf. top
2			Perf. bottom
Liners Used			Perf. top
			Perf. bottom

Open Flow \_\_\_\_\_ /10ths Water in \_\_\_\_\_ Inch  
\_\_\_\_\_ /10ths Merc. in \_\_\_\_\_ Inch  
Volume 465 M Cu. Ft.  
Rock Pressure Not Given lbs. \_\_\_\_\_ hrs.  
Oil \_\_\_\_\_ bbls., 1st 24 hrs.  
Fresh water \_\_\_\_\_ feet \_\_\_\_\_ feet  
Salt water \_\_\_\_\_ feet \_\_\_\_\_ feet

CASING CEMENTED	SIZE	No. Ft.	Date

Formation	Color	Hard or Soft	Top	Bottom	Oil, Gas or Water	Depth Found	Remarks
This Well was Purchased by U.F.G. Co. 6-30-40 from Kan. Gas & Util. Co.							
Surface			0	11			
Sand			11	65			
Slate			65	90			
Sand			90	250	Oil	120'	Show in B. Line
Slate			250	300	Gas	149'	" " "
Sand			300	530			
Slate			530	830			
Salt Sand			830	995			
Slate			995	1035			
Salt Sand #2			1035	1228			
Slate			1228	1258			
Maxon Sand			1258	1369			
Little Lime			1369	1398			
Pencil Cave			1398	1409			
Big Lime			1409	1591			
Red Rock			1591	1603			
Big Injun			1603	1640			
Slate			1640	1646			
Squaw Sand			1646	1655			
Slate			1655	1825			
Shells			1825	1920			
Slate			2087	2097			
Berea			2097	2118			
Total Depth			2118'				
							Production before shot 10/10 Water in 2" opening.
							Production after shot 23/10 Water in 2" opening.
							Hole reduced at 1679' 9"
							5 foot perforated pipe on joint of Tubing.
							16' 5" of Pine Log in bottom
							Packer set at 1861' 5"
							Gas 2099-2108' 12/10 W 2" (when drilled in)



Formation	Color	Hard or Soft	Top	Bottom	Oil, Gas or Water	Depth Found	Remarks

Date December 18, 1950

APPROVED United Fuel Gas Co. Owner

By A. H. Moore  
Chief Engineer (Title) R.